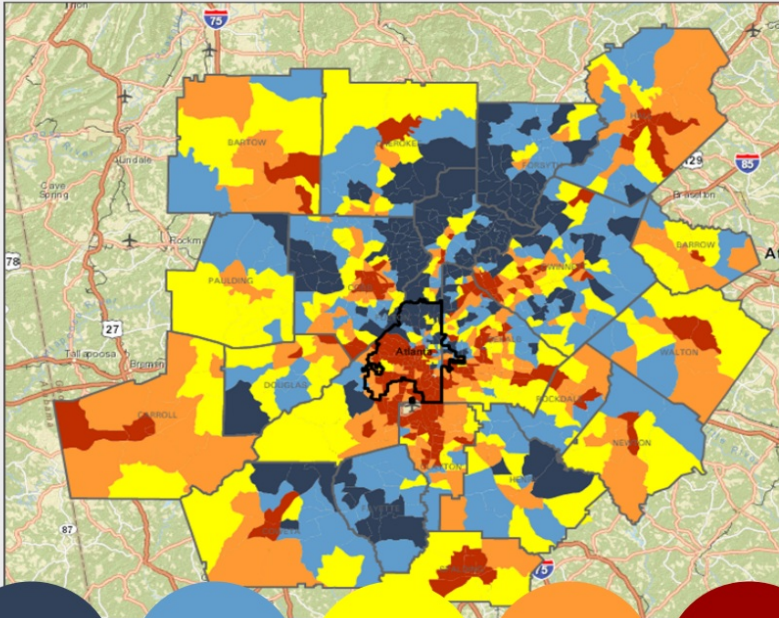


Metro Atlanta Income Distribution

Median Household Income, Current (2009-2013)



\$80K -
\$177K

\$63K -
\$80K

\$50K -
\$63K

\$38K -
\$50K

\$8K -
\$50K

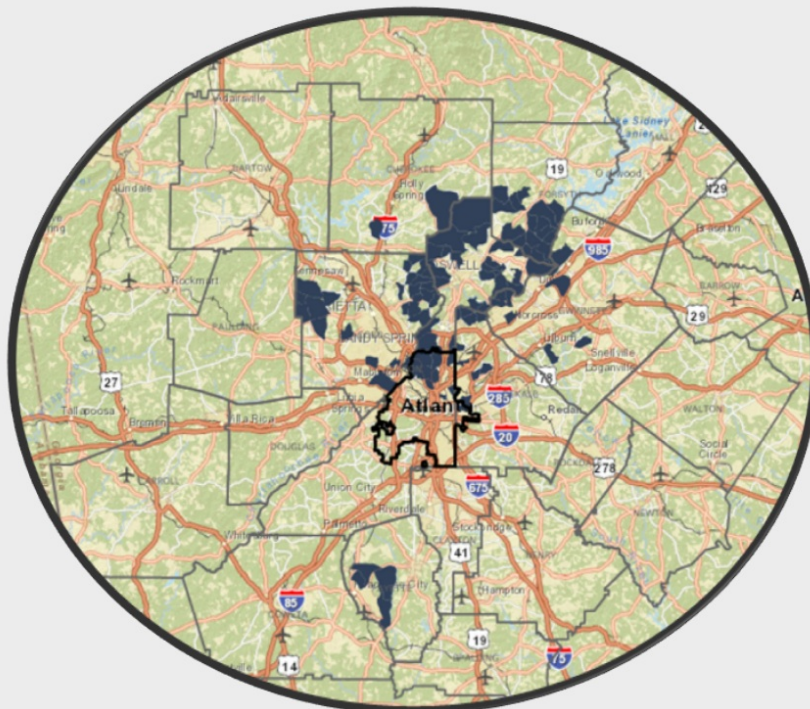
METRO ATLANTA HAS A MEDIAN HOUSEHOLD INCOME OF \$55,733, RANKING IT 16TH OUT OF THE 25 LARGEST METROS.

Since 1970, per capita income in Metro Atlanta has increased 67% and outpaced national income growth

however...

The Great Recession changed this trajectory- From 2000 to 2010, it experienced a 12% decline when average metro areas had a 3% increase

Top 100 Neighborhoods by Household Income



4

Only four neighborhoods (all around Peachtree City in Fayette County) are located south of I-20

Of the top 100 neighborhoods by income in the region, almost all of them are located north of I-20.

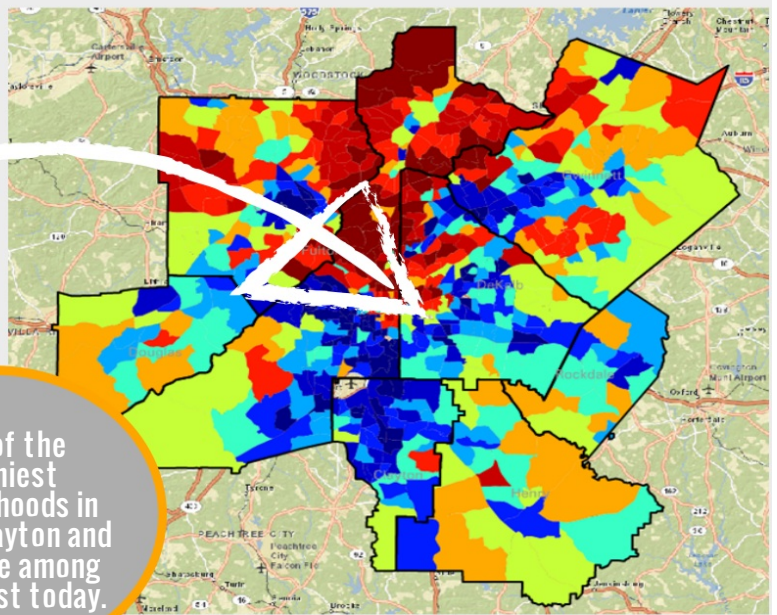
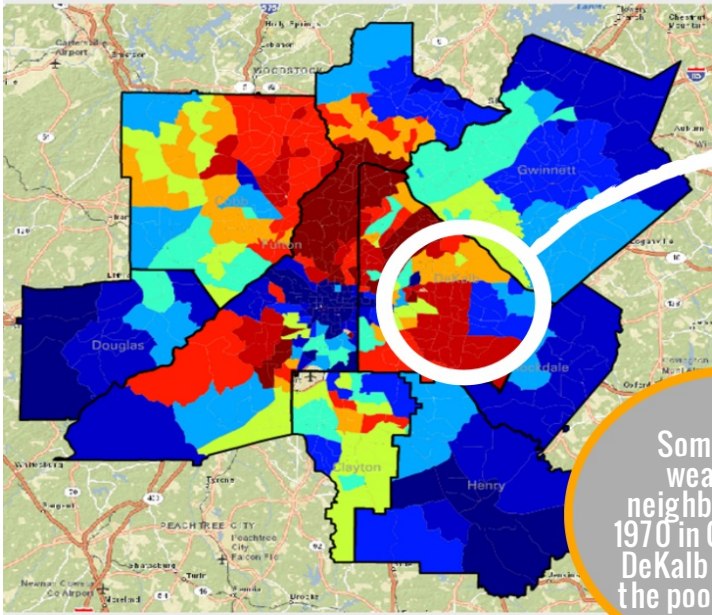
Change in neighborhood income between 1970 and 2010

(Wealthiest neighborhoods in RED)

From 1970 to 2010, the wealthiest neighborhoods generally cluster in northern parts of the region....

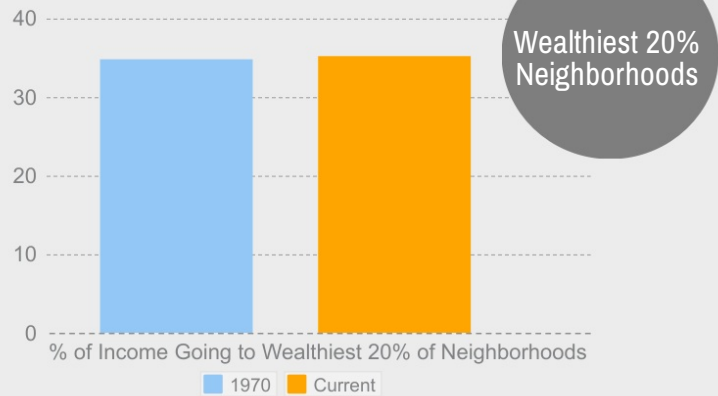
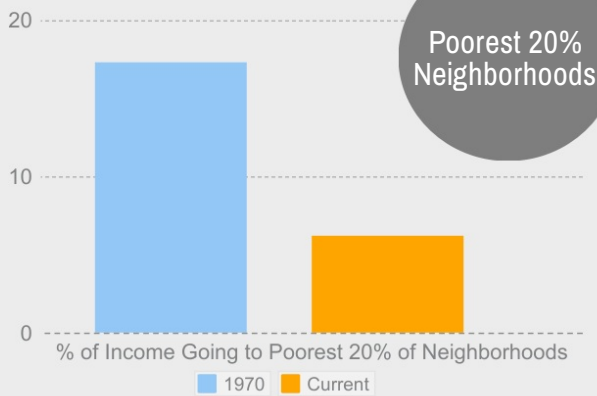
Average Family Income 1970

Average Family Income 2009-2013



Some of the wealthiest neighborhoods in 1970 in Clayton and DeKalb are among the poorest today.

Neighborhood income distribution: Then and now



In 1970, roughly 17 percent of the total family income in the region went to the poorest 20% of neighborhoods. Today, only six percent of income goes to the poorest 20%. So it isn't necessarily that rich neighborhoods got richer, it's that poor neighborhoods got much poorer

For more information, especially on income inequality...

[The Equality of Opportunity Project](#)

----- This explores the likelihood that a child born to parents at the lower rung of income can climb to a higher rung. -----

Atlanta ranks near the bottom on this measure...

[Brookings Institution](#)

----- Brookings uses the 95/20 ratio to explore income inequality. This analyzes the gap between incomes at the 95th percentile versus the 20th percentile. -----

The city has the highest income inequality on this measure...

[Georgia State University](#)

----- GSU's Center for State and Local Finance augmented Brookings' analysis by extending the 95/20 concept to the larger metro area. -----

... metro Atlanta as a whole, however, doesn't have high levels of income inequality