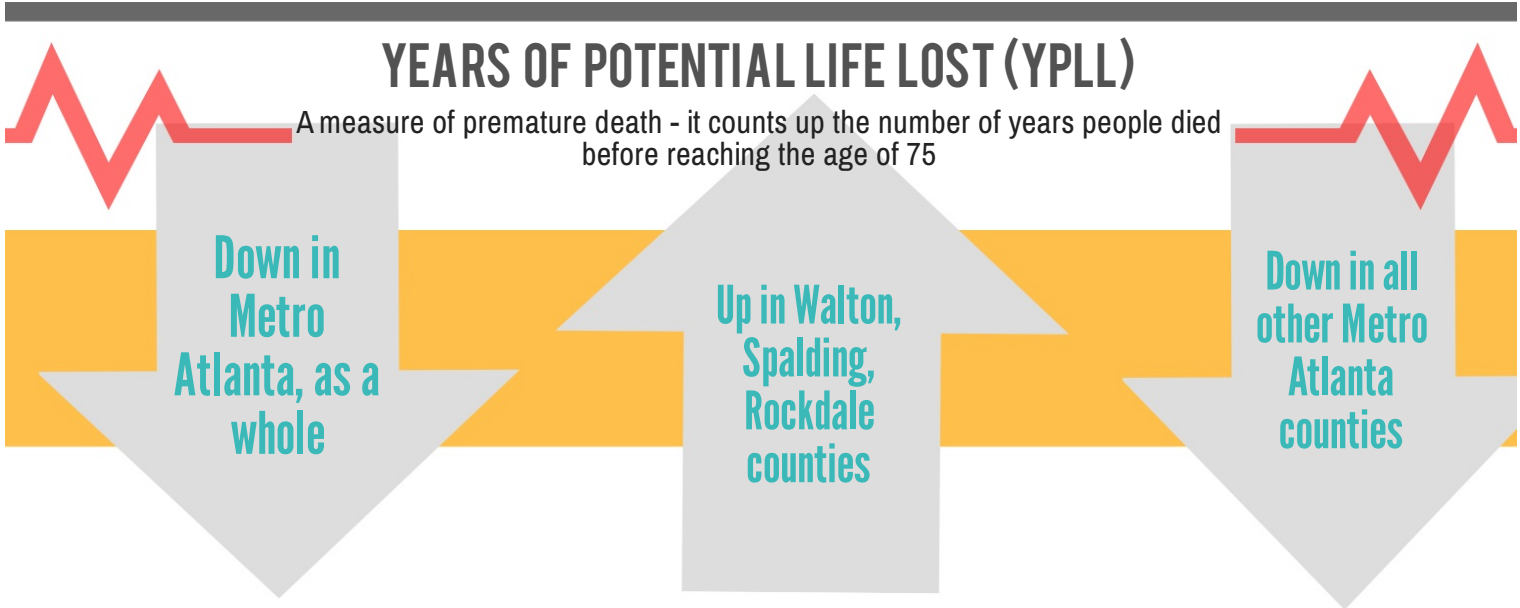


Clayton and Spalding Counties have among the poorest scores for ALL factors in the region

Forsyth and Fayette are ranked highly in all factors in the State



CARDIOVASCULAR DISEASE:

one of the biggest national public health threats, is also on the *decline* in Metro Atlanta.

BUT, not ALL health trends are improving...

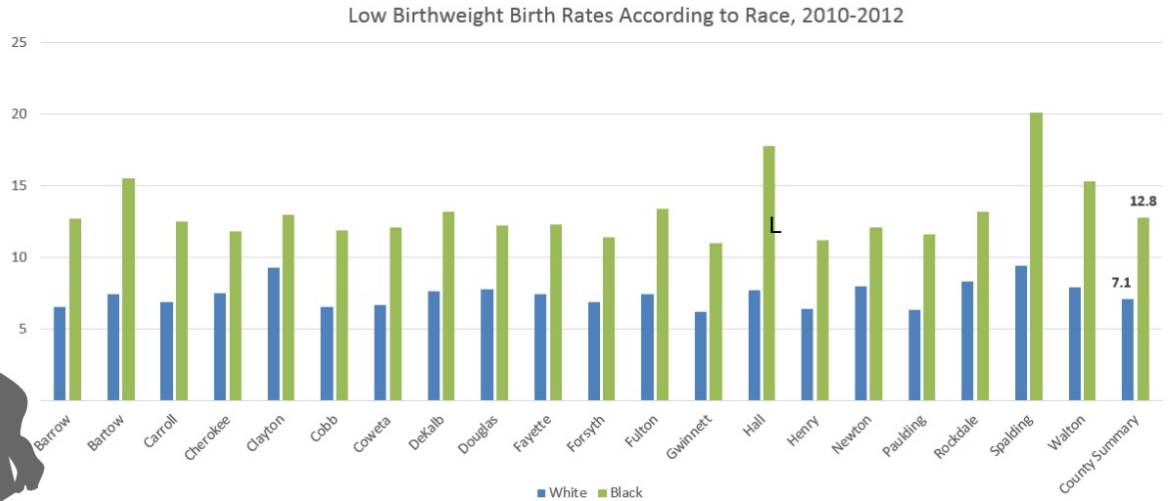
Low Birthweight Births and Diabetes discharge rates are on the **RISE**

Low Birthweight Birth Rates

...and can be correlated with **Poverty & Race**

LBW BIRTHS HAVE INCREASED FROM 7.9% BETWEEN THE 2000-2002 PERIOD TO 9.0% DURING THE 2010-2012 PERIOD.

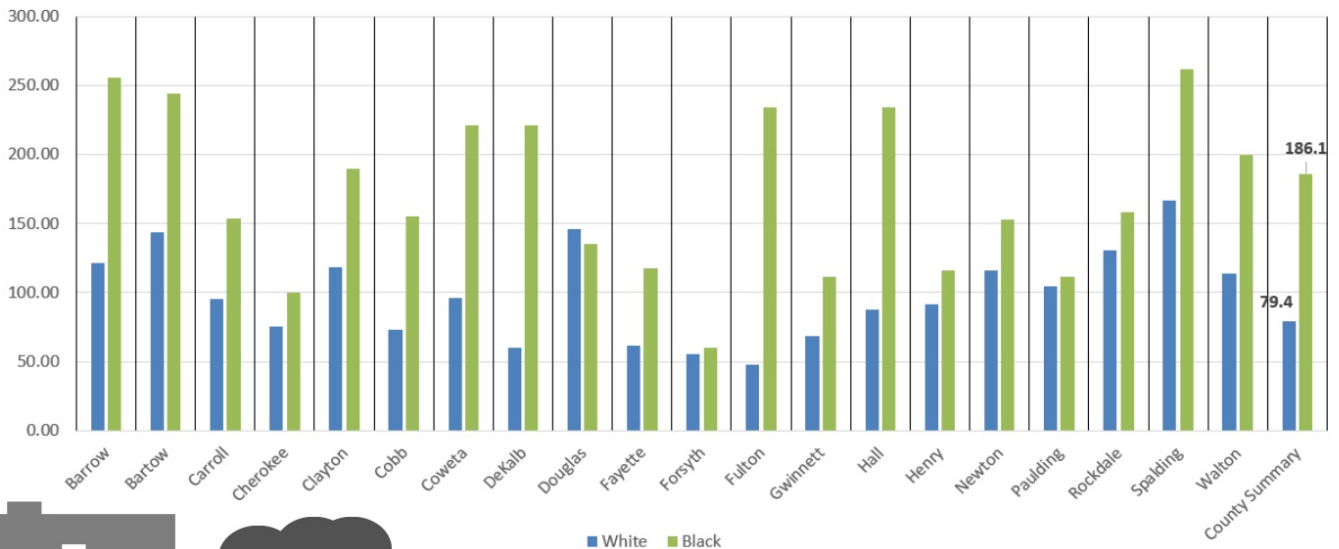
(with the exception of Barrow and Carroll counties)



Low Birthweight Births are significantly higher among African Americans than whites and are primarily concentrated in areas of high poverty.

Diabetes Discharge Rates

Diabetes Discharge Rates According to Race, 2011-2013



Diabetes

discharge rates for African Americans are significantly higher in every county with the exception of Douglas.



There are also spatial correlations between impoverished census tracts and high discharge rates

Georgia Department of Public Health (OASIS)

Oasis is an online platform with interactive tools for users to use and analyze Georgia's public health data.

About the Data:

ACS 2009-2013

<http://www.neighborhoodnexus.org/>

2015 County Health Rankings

breaks down overall health into 'outcomes' and 'factors'. Each county is given a ranking 1-159, where 1 is the healthiest and 159 is the least healthy.