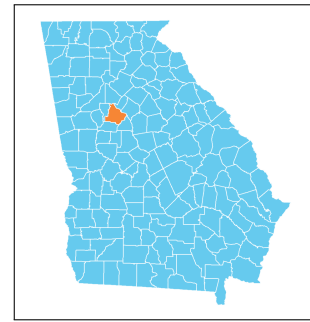


Henry County, Georgia Early Childhood Profile

The Georgia Early Childhood Profiles are produced by GEEARS: Georgia Early Education Alliance for Ready Students, with technical assistance from Neighborhood Nexus. GEEARS is a nonpartisan, nonprofit organization whose mission is support high-quality early learning and healthy development for Georgia's youngest children, from birth to five, by championing policies, promoting innovative and evidence-based practices, and building public will. These profiles highlight indicators relevant to early childhood and school readiness. To learn more, please visit www.geears.org.



Early Care and Education Providers

	County	State
Total Early Learning Providers¹	94	4,774
Child Care Learning Centers	64	2,783
<i>Licensed to serve infants</i>	95%	85%
<i>Licensed to serve toddlers</i>	100%	93%
<i>Licensed to serve preschoolers</i>	100%	99%
Family Child Care Learning Homes	18	1,038
<i>Licensed to serve infants</i>	78%	84%
<i>Licensed to serve toddlers</i>	94%	97%
<i>Licensed to serve preschoolers</i>	100%	97%
Other Providers [†]	12	953
Total Licensed Capacity^{*1}	10,032	340,084
Quality Rated: [#]	87%	75%
Child Care Learning Centers	9,924	333,892
Quality Rated: [#]	87%	75%
<i>1-star programs</i>	23%	11%
<i>2-star programs</i>	58%	52%
<i>3-star programs</i>	7%	12%
Family Child Care Learning Homes	108	6,192
Quality Rated: [#]	50%	47%
<i>1-star programs</i>	0%	4%
<i>2-star programs</i>	28%	30%
<i>3-star programs</i>	22%	14%

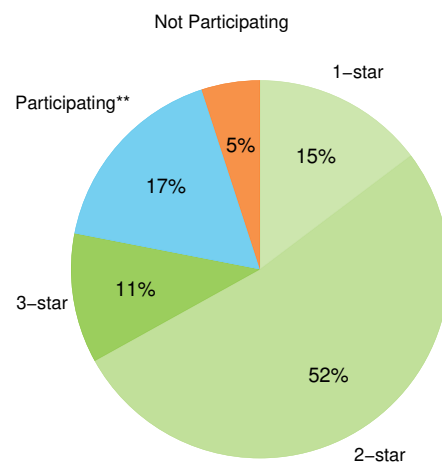
Third Grade Assessment Results

	County	State
Students Tested, ELA⁴	2,942	127,195
Proficient/Distinguished Learners:	29%	35%
<i>White</i>	35%	48%
<i>Black or African-American</i>	26%	24%
<i>Hispanic or Latino</i>	29%	25%
<i>Limited English Proficiency</i>	14%	14%
<i>Economically Disadvantaged</i>	24%	27%
Students Tested, Math⁴	2,934	127,119
Proficient/Distinguished Learners:	33%	44%
<i>White</i>	40%	60%
<i>Black or African-American</i>	31%	29%
<i>Hispanic or Latino</i>	33%	34%
<i>Limited English Proficiency</i>	13%	26%
<i>Economically Disadvantaged</i>	28%	35%

Program Enrollment

	County	State
Kindergarten ²	2,491	114,666
Head Start and Early Head Start ³	58	20,825

Quality Rated Licensed Early Learning Providers¹



[†]The "Other Providers" category represents entities not subject to licensing by The Georgia Department of Early Care and Learning (DECAL) such as local school systems. Only providers known to DECAL are included.

[#]Quality Rated is Georgia's Quality Rating and Improvement System for child care and early learning programs. For more information, visit qualityrated.org.

[♣]Licensed Capacity indicates the maximum number of children a facility is permitted to serve based on square footage, and is typically larger than the actual number of children served.

* Insufficient data

** Participating in the Quality Rated process, but not yet rated as of 1/1/2026.

Henry County, Georgia

Program Utilization

	County	State
Babies Can't Wait ^{4,5}	380	17,483
Childcare and Parent Services (CAPS) ^{4,5}	2,608	76,374
Georgia Home Visiting ^{4,5}	1	2,061

Parental Employment

	County	State
Population under age 6 living with parent ⁶	16,473	733,521
Both parents or only parent in labor force	75%	68%
One parent in labor force, one not	19%	23%
No parent in labor force	6%	9%

Family, Health, and Services

	County #	County %	State %
Children under age 6 living below: ⁶			
100% Poverty	2,806	16%	20%
150% Poverty	3,539	20%	31%
200% Poverty	5,511	32%	42%
Children under age 6 without health insurance ⁶	1,202	7%	5%
Limited English-speaking households ⁶	1,601	2%	3%
Substantiated Abuse/Neglect Reports (unduplicated) ⁷	254	4.0 [†]	4.5 [†]
Births to mothers who are not high school graduates ⁸	182	7%	11%
Births to girls ages 15-19 ⁸	101	10.3 [†]	16.3 [†]
Low birth weight babies ⁸	334	13%	10%
Preterm babies ⁸	336	13%	12%
Asthma-related ER visits (ages 0-4) ⁸	128	88.6 [‡]	91.6 [‡]

† Rate per 1,000 population
‡ Rate per 10,000 population
* Insufficient data

◆ All programs ensure the highest quality data to the extent possible. Numbers represent total children enrolled in the program at any time during the year, which is generally greater than the number enrolled at any given point in time. Each agency and program participating in GA CACDS maintains its own data, and each one has protocols for data entry and data quality. GA CACDS does not conduct any additional data quality measures.

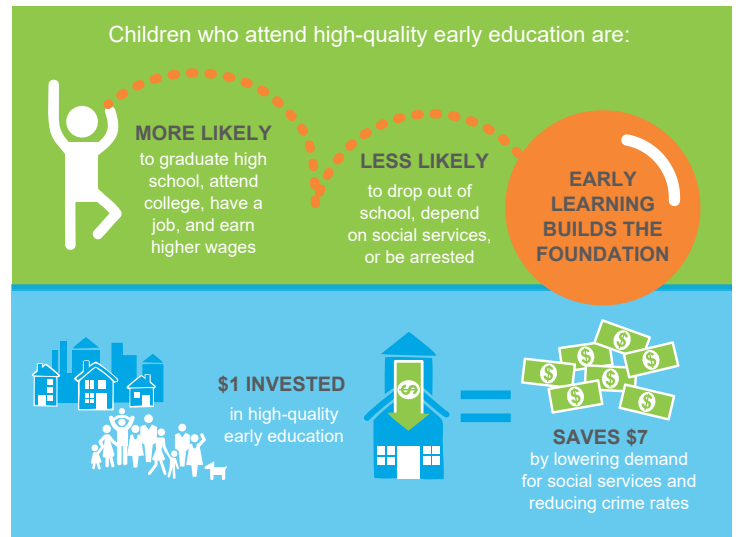
Economic Status



Of every 20 children ages 0-5 in Henry County, Georgia, **6 are economically disadvantaged, including 3 living in poverty.**⁶

Children by Race and Ethnicity

	County	State
Population under age 5 ⁶	14,217	636,230
White	25%	43%
Black or African-American	55%	32%
Asian and Pacific Islander	3%	4%
Other race or multiracial	17%	22%
Hispanic or Latino (any race)	12%	17%



Sources:

1. Georgia Department of Early Care and Learning, 1/1/2026
2. Georgia Department of Education, FTE 2026-1
3. The Office of Head Start Program Information Report, 1/2025
4. Georgia Governor's Office of Student Achievement, SY 2025
5. Georgia's Cross-Agency Child Data System (CACDS), FY 2024
6. U.S. Census Bureau, American Community Survey (2020-24)
7. KIDS COUNT, 2023
8. Georgia Department of Public Health, OASIS (annual average 2022-24)