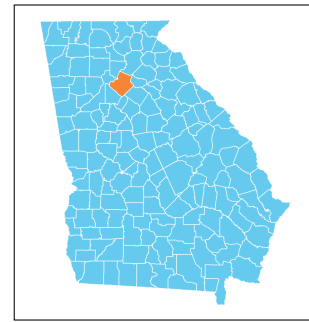


Gwinnett County, Georgia Early Childhood Profile

The Georgia Early Childhood Profiles are produced by GEEARS: Georgia Early Education Alliance for Ready Students, with technical assistance from Neighborhood Nexus. GEEARS is a nonpartisan, nonprofit organization whose mission is support high-quality early learning and healthy development for Georgia's youngest children, from birth to five, by championing policies, promoting innovative and evidence-based practices, and building public will. These profiles highlight indicators relevant to early childhood and school readiness. To learn more, please visit www.geears.org.



Early Care and Education Providers[▼]

| | County | State |
|---|---------------|----------------|
| Total Early Learning Providers¹ | 315 | 4,930 |
| Child Care Learning Centers | 211 | 2,788 |
| <i>Licensed to serve infants</i> | 91% | 85% |
| <i>Licensed to serve toddlers</i> | 97% | 92% |
| <i>Licensed to serve preschoolers</i> | 100% | 100% |
| Family Child Care Learning Homes | 103 | 1,209 |
| <i>Licensed to serve infants</i> | 84% | 85% |
| <i>Licensed to serve toddlers</i> | 97% | 97% |
| <i>Licensed to serve preschoolers</i> | 94% | 96% |
| Other Providers [†] | 1 | 933 |
| Total Licensed Capacity^{*1} | 34,459 | 336,001 |
| Quality Rated: [#] | 80% | 74% |
| Child Care Learning Centers | 33,876 | 328,796 |
| Quality Rated: [#] | 81% | 75% |
| <i>1-star programs</i> | 30% | 24% |
| <i>2-star programs</i> | 38% | 35% |
| <i>3-star programs</i> | 13% | 15% |
| Family Child Care Learning Homes | 583 | 7,205 |
| Quality Rated: [#] | 42% | 47% |
| <i>1-star programs</i> | 19% | 21% |
| <i>2-star programs</i> | 9% | 17% |
| <i>3-star programs</i> | 14% | 9% |

Program Enrollment

| | County | State |
|--|--------|---------|
| Kindergarten ² | 11,991 | 122,076 |
| Lottery Funded Georgia Pre-K ^{1 ‡} | 5,916 | 72,787 |
| <i>At-risk children served¹</i> | 48% | 47% |
| Head Start and Early Head Start ^{3 ‡} | 438 | 24,730 |

[†]The "Other Providers" category represents entities not subject to licensing by The Georgia Department of Early Care and Learning (DECAL) such as local school systems. Only providers known to DECAL are included.

[#]Quality Rated is Georgia's Quality Rating and Improvement System for child care and early learning programs. For more information, visit qualityrated.org.

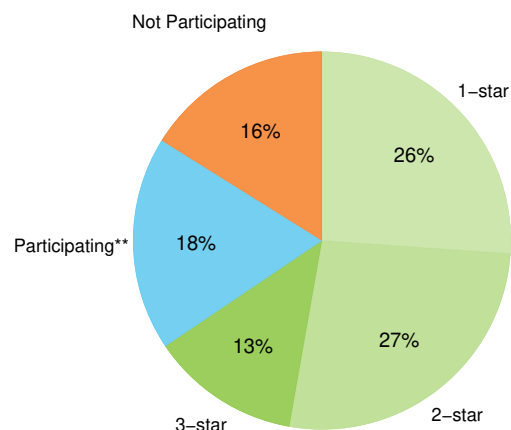
^{*}Licensed Capacity indicates the maximum number of children a facility is permitted to serve based on square footage, and is typically larger than the actual number of children served.

^{*}Insufficient data

Third Grade Assessment Results

| | County | State |
|--|---------------|----------------|
| Students Tested, ELA⁴ | 13,170 | 128,777 |
| Proficient/Distinguished Learners: | 50% | 42% |
| <i>White</i> | 68% | 57% |
| <i>Black or African-American</i> | 48% | 27% |
| <i>Hispanic or Latino</i> | 34% | 31% |
| <i>Limited English Proficiency</i> | 23% | 18% |
| <i>Economically Disadvantaged</i> | 38% | 31% |
| Students Tested, Math⁴ | 13,158 | 128,610 |
| Proficient/Distinguished Learners: | 61% | 52% |
| <i>White</i> | 77% | 67% |
| <i>Black or African-American</i> | 54% | 35% |
| <i>Hispanic or Latino</i> | 48% | 45% |
| <i>Limited English Proficiency</i> | 41% | 35% |
| <i>Economically Disadvantaged</i> | 49% | 41% |

Quality Rated Licensed Early Learning Providers¹



[‡]There may be overlap between Pre-K and Head Start enrollments due to braided and blended funding sources, so these categories are not summative.

** Participating in the Quality Rated process, but not yet rated as of 10/1/2022.

Gwinnett County, Georgia

Program Utilization

| | County | State |
|--|--------|--------|
| Babies Can't Wait ⁴⁵ | 1,860 | 19,185 |
| Childcare and Parent Services (CAPS) ⁴⁵ | 4,217 | 59,485 |
| Georgia Home Visiting ⁴⁵ | 0 | 1,851 |

Parental Employment

| | County | State |
|--|--------|---------|
| Population under age 6 living with parent ⁶ | 72,538 | 745,128 |
| Both parents or only parent in labor force | 62% | 67% |
| One parent in labor force, one not | 33% | 25% |
| No parent in labor force | 5% | 8% |

Family, Health, and Services

| | County # | County % | State % |
|--|----------|-------------------|-------------------|
| Children under age 6 living below: ⁶ | | | |
| 100% Poverty | 10,355 | 14% | 22% |
| 150% Poverty | 19,727 | 27% | 35% |
| 200% Poverty | 28,203 | 38% | 46% |
| Children under age 6 without health insurance ⁶ | 5,659 | 8% | 6% |
| Limited English-speaking households ⁶ | 26,009 | 9% | 3% |
| Substantiated Abuse/Neglect Reports (duplicated) ⁷ | 179 | 0.6 [‡] | 2.5 [‡] |
| Births to mothers who are not high school graduates ⁸ | 939 | 8% | 12% |
| Births to girls ages 15-19 ⁸ | 416 | 11.7 [†] | 18.1 [†] |
| Low birth weight babies ⁸ | 1,012 | 9% | 10% |
| Preterm babies ⁸ | 1,165 | 10% | 12% |
| Asthma-related ER visits (ages 0-4) ⁸ | 474 | 79.3 [‡] | 83.1 [‡] |

† Rate per 1,000 population

‡ Rate per 10,000 population

* Insufficient data

▲ All programs ensure the highest quality data to the extent possible. Numbers represent total children enrolled in the program at any time during the year, which is generally greater than the number enrolled at any given point in time. Each agency and program participating in GA CACDS maintains its own data, and each one has protocols for data entry and data quality. GA CACDS does not conduct any additional data quality measures.

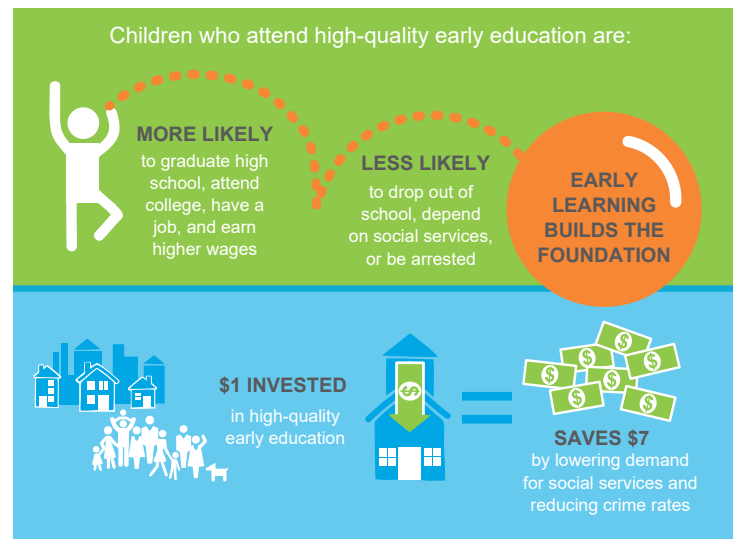
Economic Status



Of every 20 children ages 0-5 in Gwinnett County, Georgia, **8 are economically disadvantaged, including 3 living in poverty.**⁶

Children by Race and Ethnicity

| | County | State |
|-------------------------------------|--------|---------|
| Population under age 5 ⁶ | 60,961 | 652,085 |
| White | 39% | 50% |
| Black or African-American | 29% | 33% |
| Asian and Pacific Islander | 10% | 4% |
| Other race or multiracial | 22% | 13% |
| Hispanic or Latino (any race) | 29% | 15% |



Sources:

1. Georgia Department of Early Care and Learning, 10/1/2022
2. Georgia Department of Education, FTE 2022-1
3. The Office of Head Start Program Information Report, 01/2022
4. Georgia Governor's Office of Student Achievement, SY 2019
5. Georgia's Cross-Agency Child Data System (CACDS), 7/2019-6/2020
6. U.S. Census Bureau, American Community Survey (2016-20)
7. Fostering Court Improvement, 4/2021-3/2022
8. Georgia Department of Public Health, OASIS (annual average 2019-21)