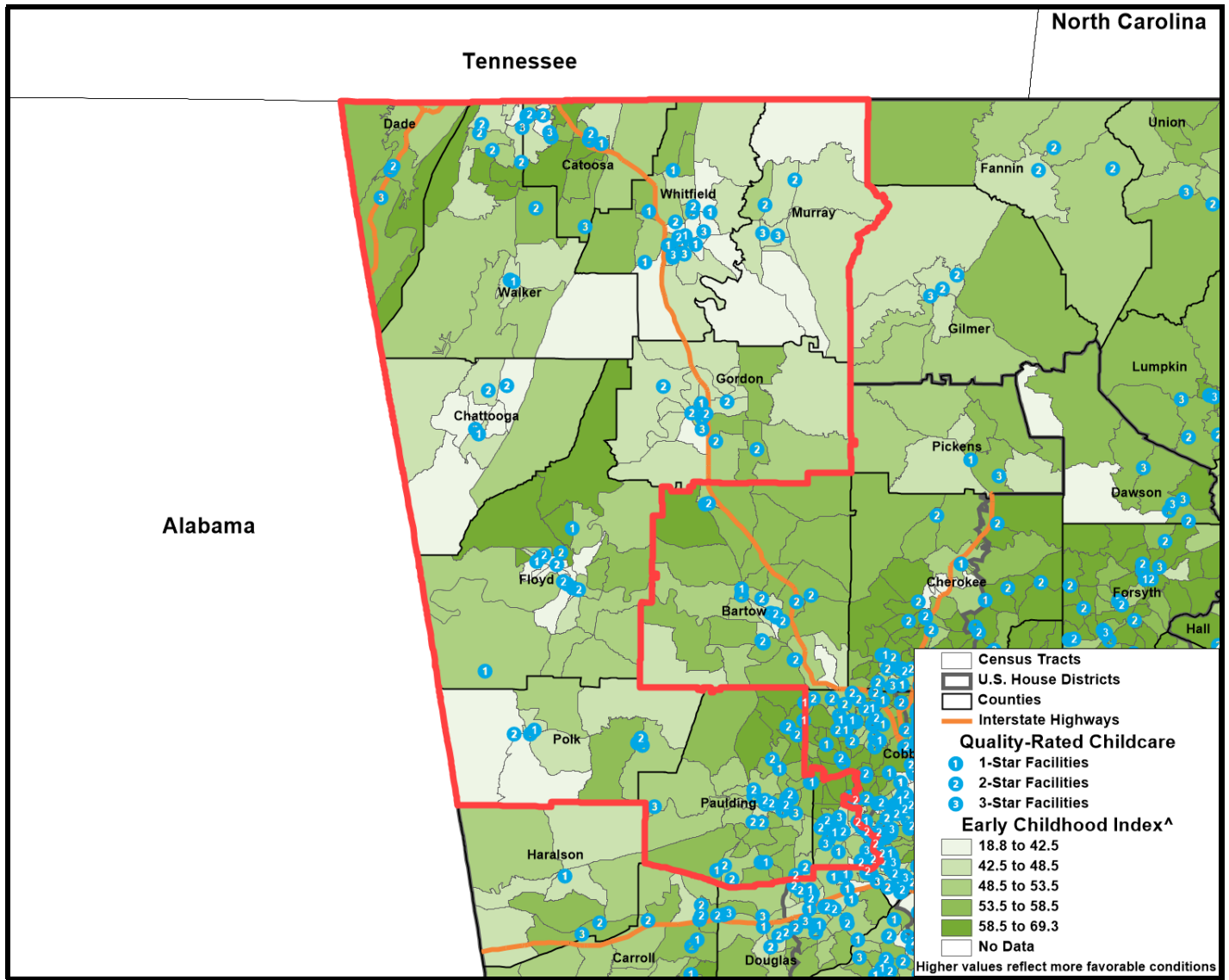


# Georgia Congressional District 14 Early Childhood Profile



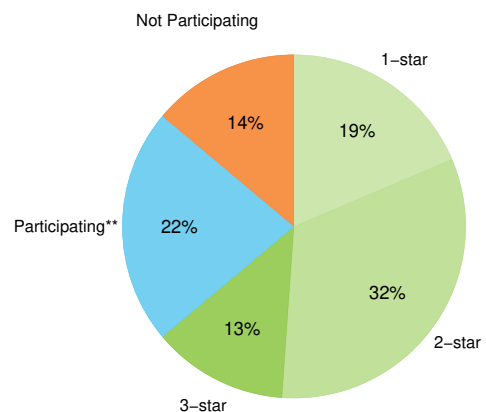
Children, ages 0-4 residing in Georgia Congressional District 14: **43,901<sup>1</sup>**

Congressional District 14 Early Childhood Index Score: **49.9**; Statewide Early Childhood Index Score: **50.1<sup>^</sup>**

## Early Care and Education Providers<sup>▼</sup>

	CD 14	State
<b>Total Early Learning Providers<sup>2</sup></b>	<b>264</b>	<b>4,987</b>
Child Care Learning Centers	142	2,867
<i>Licensed to serve infants</i>	83%	85%
<i>Licensed to serve toddlers</i>	89%	92%
Family Child Care Learning Homes	52	1,172
<i>Licensed to serve infants</i>	85%	85%
<i>Licensed to serve toddlers</i>	96%	97%
Other Providers <sup>†</sup>	70	948
<b>Total Licensed Capacity<sup>2 ‡</sup></b>	<b>17,411</b>	<b>344,939</b>
Quality Rated: <sup>#</sup>	80%	72%
Child Care Learning Centers	17,100	337,954
Quality Rated: <sup>#</sup>	81%	73%
Family Child Care Learning Homes	311	6,985
Quality Rated: <sup>#</sup>	39%	46%

## Quality Rated Licensed Early Learning Providers<sup>2</sup>



\*\*Participating in the Quality Rated process, but not yet rated as of 1/1/2023.

## Economic Status

	CD 14 #	CD 14 %	State %
Children under age 6 living below: <sup>1</sup>			
100% Poverty	7,321	14%	18%
150% Poverty	14,963	28%	31%
200% Poverty	20,964	39%	43%



Of every 20 children ages 0-5 in Congressional District 14, **8 are economically disadvantaged, including 3 living in poverty.**<sup>1</sup>

## Program Utilization

	CD 14	State
Lottery Funded Georgia Pre-K <sup>2</sup> *	5,362	71,401
At-risk children served <sup>2</sup> *	52%	48%
Head Start and Early Head Start <sup>3</sup> *	1,890	22,069

## Parental Employment

	CD 14	State
Population under age 6 living with parent <sup>1</sup>	51,192	711,914
Both parents or only parent in labor force	73%	70%
One parent in labor force, one not	19%	20%
No parent in labor force	8%	9%

<sup>^</sup> This index is composed of 9 indicators related to early childhood well-being measured at the Census tract level; higher values reflect more favorable conditions. For more information, visit [gears.org/research/readiness\\_radar](http://gears.org/research/readiness_radar).

<sup>†</sup> This category represents entities not subject to licensing by The Georgia Department of Early Care and Learning (DECAL) such as local school systems. Only providers known to DECAL are included.

<sup>‡</sup> Licensed Capacity indicates the maximum number of children a facility is permitted to serve based on square footage, and is typically larger than the actual number of children served.

<sup>#</sup> *Quality Rated* is Georgia's Quality Rating and Improvement System for child care and early learning programs. See [qualityrated.org](http://qualityrated.org) for more information.

<sup>★</sup> There may be overlap between Pre-K and Head Start enrollments due to braided and blended funding sources, so these categories are not summative.

<sup>♣</sup> Rate per 1,000 population

<sup>\*</sup> Insufficient data

## Child and Maternal Health

	CD 14 #	CD 14 %	State %
Births <sup>4</sup>	8,703	37.9 <sup>★</sup>	37.2 <sup>★</sup>
Births to mothers who are not high school graduates <sup>4</sup>	1,493	17.2%	11.9%
Births to girls ages 15-19 <sup>4</sup>	577	21.5 <sup>★</sup>	18.3 <sup>★</sup>
Low birth weight babies <sup>4</sup>	773	8.9%	10.2%
Preterm babies <sup>4</sup>	968	11.1%	11.7%
Infant mortality rate <sup>5</sup>		6.5 <sup>★</sup>	7.1 <sup>★</sup>
Children under age 6 without health insurance <sup>1</sup>	2,363	4%	5%

## QUALITY CHILD CARE IS OUT OF REACH

In many parts of Georgia, a year of quality care for an infant or toddler costs more than a year of in-state tuition at a four-year university!



Infographic courtesy of our partner, *Think Babies*

### Sources:

1. U.S. Census Bureau, American Community Survey (2022)
2. Georgia Department of Early Care and Learning, 1/1/2023
3. The Office of Head Start Program Information Report, 11/2023
4. Georgia Department of Public Health, Office of Health Indicators for Planning, Birth Statistical File (2018-22). Counts represent the 5-year average. Rates are calculated using 2018-22 American Community Survey data for the denominators.
5. Georgia Department of Public Health, Office of Health Indicators for Planning (2013-22).

The Georgia Early Childhood Profiles are produced by GEEARS: Georgia Early Education Alliance for Ready Students, with technical assistance from Neighborhood Nexus. GEEARS is a nonpartisan, nonprofit organization whose mission is support high-quality early learning and healthy development for Georgia's youngest children, from birth to five, by championing policies, promoting innovative and evidence-based practices, and building public will. These profiles highlight indicators relevant to early childhood and school readiness. To learn more, please visit [www.gears.org](http://www.gears.org).