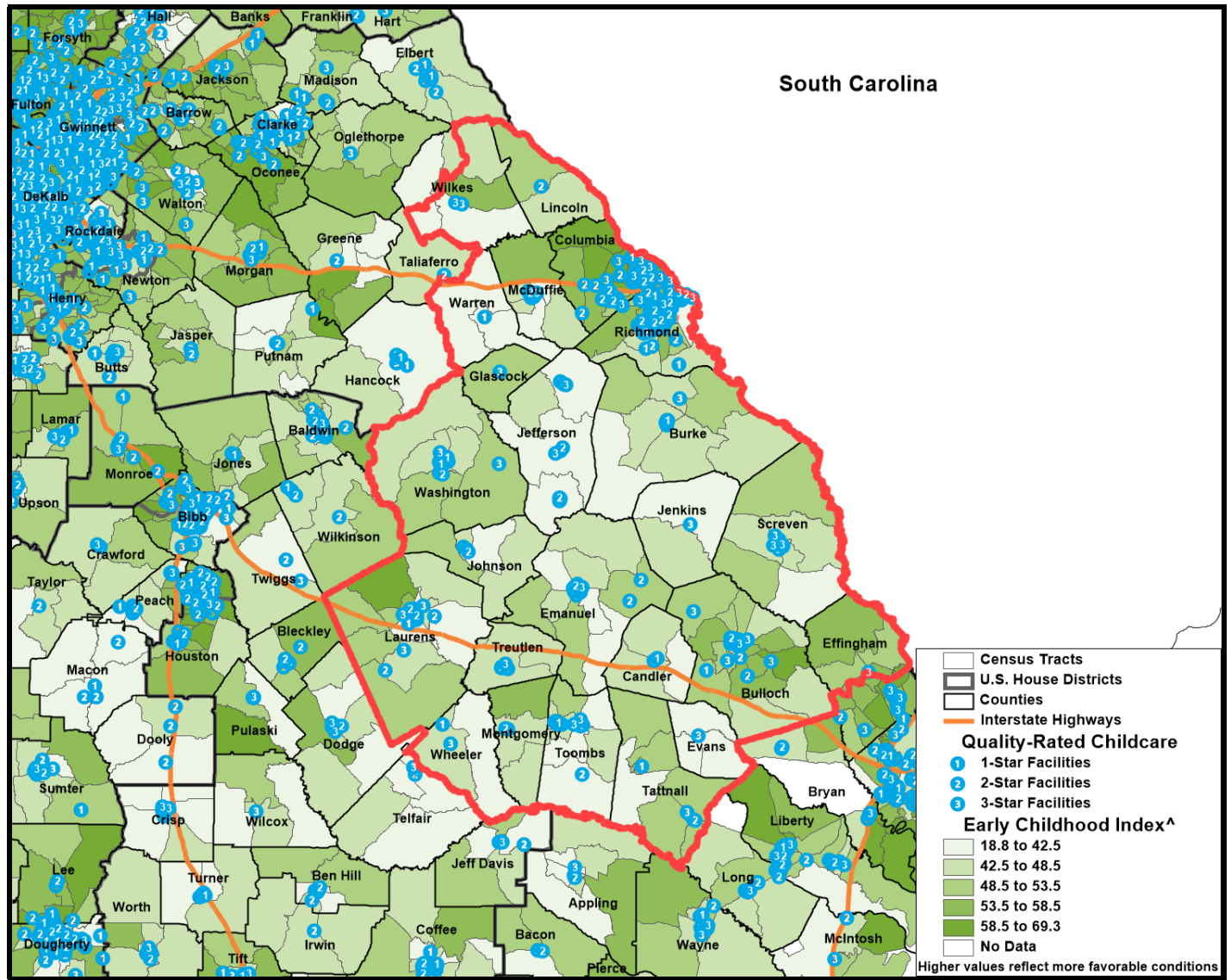


Georgia Congressional District 12 Early Childhood Profile



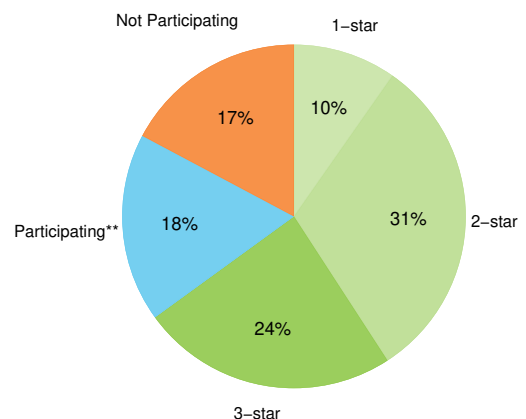
Children, ages 0-4 residing in Georgia Congressional District 12: **46,715¹**

Congressional District 12 Early Childhood Index Score: **48.8**; Statewide Early Childhood Index Score: **50.1[^]**

Early Care and Education Providers[†]

	CD 12	State
Total Early Learning Providers²	471	4,987
Child Care Learning Centers	256	2,867
<i>Licensed to serve infants</i>	78%	85%
<i>Licensed to serve toddlers</i>	82%	92%
Family Child Care Learning Homes	101	1,172
<i>Licensed to serve infants</i>	82%	85%
<i>Licensed to serve toddlers</i>	95%	97%
Other Providers [†]	114	948
Total Licensed Capacity^{2 †}	22,377	344,939
Quality Rated: [#]	81%	72%
Child Care Learning Centers	21,771	337,954
Quality Rated: [#]	82%	73%
Family Child Care Learning Homes	606	6,985
Quality Rated: [#]	31%	46%

Quality Rated Licensed Early Learning Providers²



**Participating in the Quality Rated process, but not yet rated as of 1/1/2023.

Economic Status

	CD 12 #	CD 12 %	State %
Children under age 6 living below: ¹			
100% Poverty	13,656	25%	18%
150% Poverty	23,959	45%	31%
200% Poverty	30,815	57%	43%



Of every 20 children ages 0-5 in Congressional District 12, **11 are economically disadvantaged, including 5 living in poverty.**¹

Program Utilization

	CD 12	State
Lottery Funded Georgia Pre-K ² *	6,008	71,401
At-risk children served ² *	57%	48%
Head Start and Early Head Start ³ *	2,822	22,069

Parental Employment

	CD 12	State
Population under age 6 living with parent ¹	51,525	711,914
Both parents or only parent in labor force	69%	70%
One parent in labor force, one not	20%	20%
No parent in labor force	10%	9%

[^] This index is composed of 9 indicators related to early childhood well-being measured at the Census tract level; higher values reflect more favorable conditions. For more information, visit gears.org/research/readiness_radar.

[†] This category represents entities not subject to licensing by The Georgia Department of Early Care and Learning (DECAL) such as local school systems. Only providers known to DECAL are included.

[‡] Licensed Capacity indicates the maximum number of children a facility is permitted to serve based on square footage, and is typically larger than the actual number of children served.

[#] *Quality Rated* is Georgia's Quality Rating and Improvement System for child care and early learning programs. See qualityrated.org for more information.

[★] There may be overlap between Pre-K and Head Start enrollments due to braided and blended funding sources, so these categories are not summative.

[♣] Rate per 1,000 population

^{*} Insufficient data

Child and Maternal Health

	CD 12 #	CD 12 %	State %
Births ⁴	9,228	41.0 [★]	37.2 [★]
Births to mothers who are not high school graduates ⁴	1,154	12.5%	11.9%
Births to girls ages 15-19 ⁴	602	22.9 [★]	18.3 [★]
Low birth weight babies ⁴	1,012	11.0%	10.2%
Preterm babies ⁴	1,086	11.8%	11.7%
Infant mortality rate ⁵		8.7 [★]	7.1 [★]
Children under age 6 without health insurance ¹	2,675	5%	5%

QUALITY CHILD CARE IS OUT OF REACH

In many parts of Georgia, a year of quality care for an infant or toddler costs more than a year of in-state tuition at a four-year university!



Infographic courtesy of our partner, *Think Babies*

Sources:

1. U.S. Census Bureau, American Community Survey (2022)
2. Georgia Department of Early Care and Learning, 1/1/2023
3. The Office of Head Start Program Information Report, 11/2023
4. Georgia Department of Public Health, Office of Health Indicators for Planning, Birth Statistical File (2018-22). Counts represent the 5-year average. Rates are calculated using 2018-22 American Community Survey data for the denominators.
5. Georgia Department of Public Health, Office of Health Indicators for Planning (2013-22).

The Georgia Early Childhood Profiles are produced by GEEARS: Georgia Early Education Alliance for Ready Students, with technical assistance from Neighborhood Nexus. GEEARS is a nonpartisan, nonprofit organization whose mission is support high-quality early learning and healthy development for Georgia's youngest children, from birth to five, by championing policies, promoting innovative and evidence-based practices, and building public will. These profiles highlight indicators relevant to early childhood and school readiness. To learn more, please visit www.gears.org.