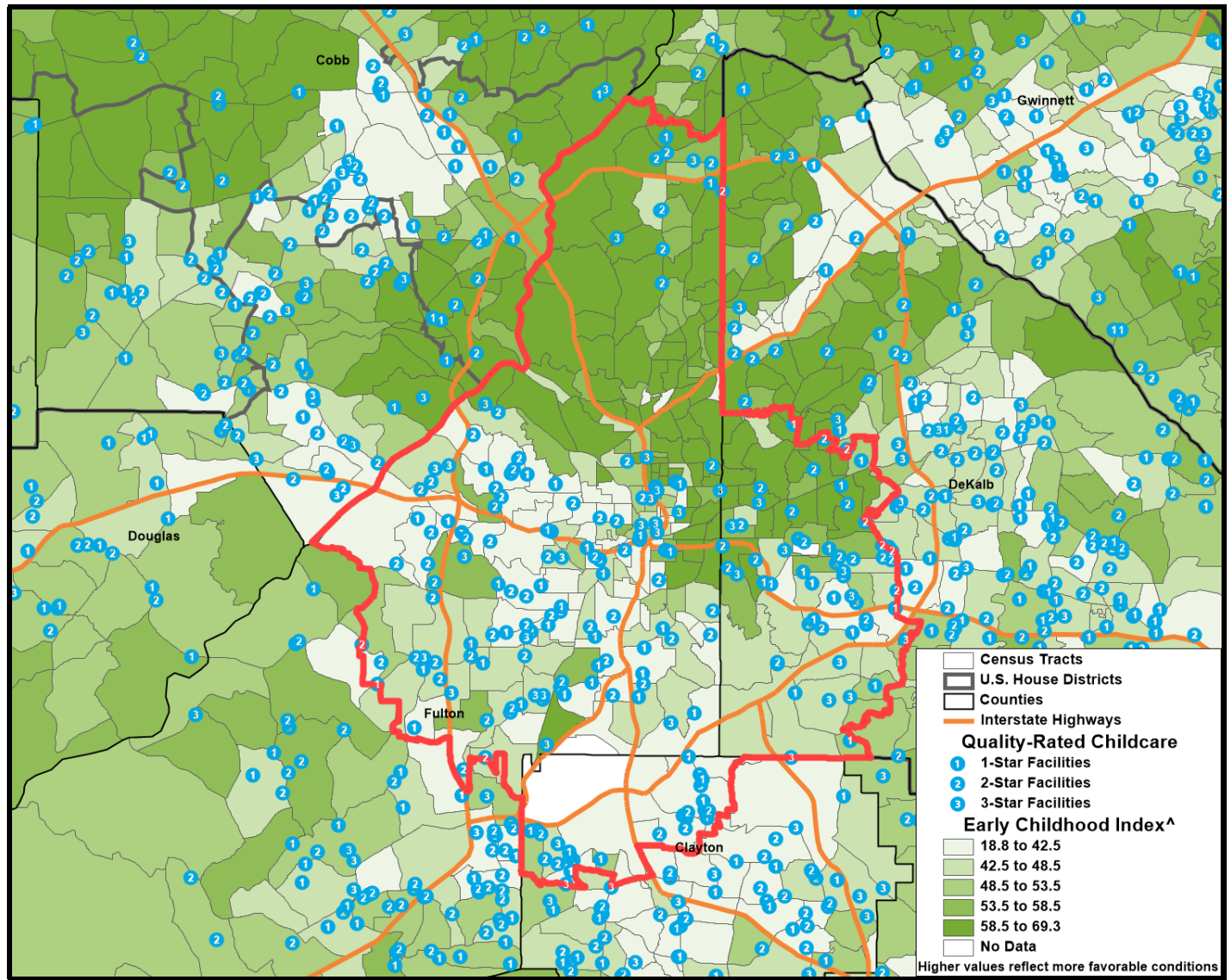


Georgia Congressional District 5 Early Childhood Profile



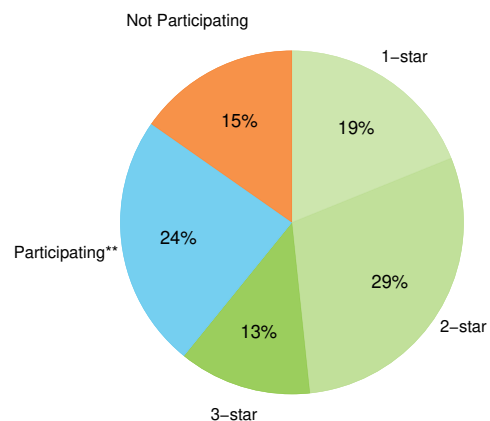
Children, ages 0-4 residing in Georgia Congressional District 5: **40,695¹**

Congressional District 5 Early Childhood Index Score: **49.7**; Statewide Early Childhood Index Score: **50.1[^]**

Early Care and Education Providers[†]

	CD 05	State
Total Early Learning Providers²	412	4,987
Child Care Learning Centers	296	2,867
<i>Licensed to serve infants</i>	84%	85%
<i>Licensed to serve toddlers</i>	94%	92%
Family Child Care Learning Homes	47	1,172
<i>Licensed to serve infants</i>	77%	85%
<i>Licensed to serve toddlers</i>	96%	97%
Other Providers [†]	69	948
Total Licensed Capacity^{2 ‡}	36,454	344,939
Quality Rated: [#]	59%	72%
Child Care Learning Centers	36,172	337,954
Quality Rated: [#]	59%	73%
Family Child Care Learning Homes	282	6,985
Quality Rated: [#]	49%	46%

Quality Rated Licensed Early Learning Providers²



**Participating in the Quality Rated process, but not yet rated as of 1/1/2023.

Economic Status

	CD 05 #	CD 05 %	State %
Children under age 6 living below: ¹			
100% Poverty	11,022	23%	18%
150% Poverty	18,321	39%	31%
200% Poverty	21,860	46%	43%



Of every 20 children ages 0-5 in Congressional District 5, **9 are economically disadvantaged, including 5 living in poverty.**¹

Program Utilization

	CD 05	State
Lottery Funded Georgia Pre-K ² *	4,405	71,401
At-risk children served ² *	51%	48%
Head Start and Early Head Start ³ *	2,966	22,069

Parental Employment

	CD 05	State
Population under age 6 living with parent ¹	46,447	711,914
Both parents or only parent in labor force	80%	70%
One parent in labor force, one not	12%	20%
No parent in labor force	8%	9%

[^] This index is composed of 9 indicators related to early childhood well-being measured at the Census tract level; higher values reflect more favorable conditions. For more information, visit gears.org/research/readiness_radar.

[†] This category represents entities not subject to licensing by The Georgia Department of Early Care and Learning (DECAL) such as local school systems. Only providers known to DECAL are included.

[‡] Licensed Capacity indicates the maximum number of children a facility is permitted to serve based on square footage, and is typically larger than the actual number of children served.

[#] *Quality Rated* is Georgia's Quality Rating and Improvement System for child care and early learning programs. See qualityrated.org for more information.

[★] There may be overlap between Pre-K and Head Start enrollments due to braided and blended funding sources, so these categories are not summative.

[♣] Rate per 1,000 population

^{*} Insufficient data

The Georgia Early Childhood Profiles are produced by GEEARS: Georgia Early Education Alliance for Ready Students, with technical assistance from Neighborhood Nexus. GEEARS is a nonpartisan, nonprofit organization whose mission is support high-quality early learning and healthy development for Georgia's youngest children, from birth to five, by championing policies, promoting innovative and evidence-based practices, and building public will. These profiles highlight indicators relevant to early childhood and school readiness. To learn more, please visit www.gears.org.

Child and Maternal Health

	CD 05 #	CD 05 %	State %
Births ⁴	8,665	34.8 [★]	37.2 [★]
Births to mothers who are not high school graduates ⁴	790	9.1%	11.9%
Births to girls ages 15-19 ⁴	394	17.3 [★]	18.3 [★]
Low birth weight babies ⁴	1,023	11.8%	10.2%
Preterm babies ⁴	1,020	11.8%	11.7%
Infant mortality rate ⁵		7.7 [★]	7.1 [★]
Children under age 6 without health insurance ¹	1,996	4%	5%

QUALITY CHILD CARE IS OUT OF REACH

In many parts of Georgia, a year of quality care for an infant or toddler costs more than a year of in-state tuition at a four-year university!



Infographic courtesy of our partner, *Think Babies*

Sources:

1. U.S. Census Bureau, American Community Survey (2022)
2. Georgia Department of Early Care and Learning, 1/1/2023
3. The Office of Head Start Program Information Report, 11/2023
4. Georgia Department of Public Health, Office of Health Indicators for Planning, Birth Statistical File (2018-22). Counts represent the 5-year average. Rates are calculated using 2018-22 American Community Survey data for the denominators.
5. Georgia Department of Public Health, Office of Health Indicators for Planning (2013-22).