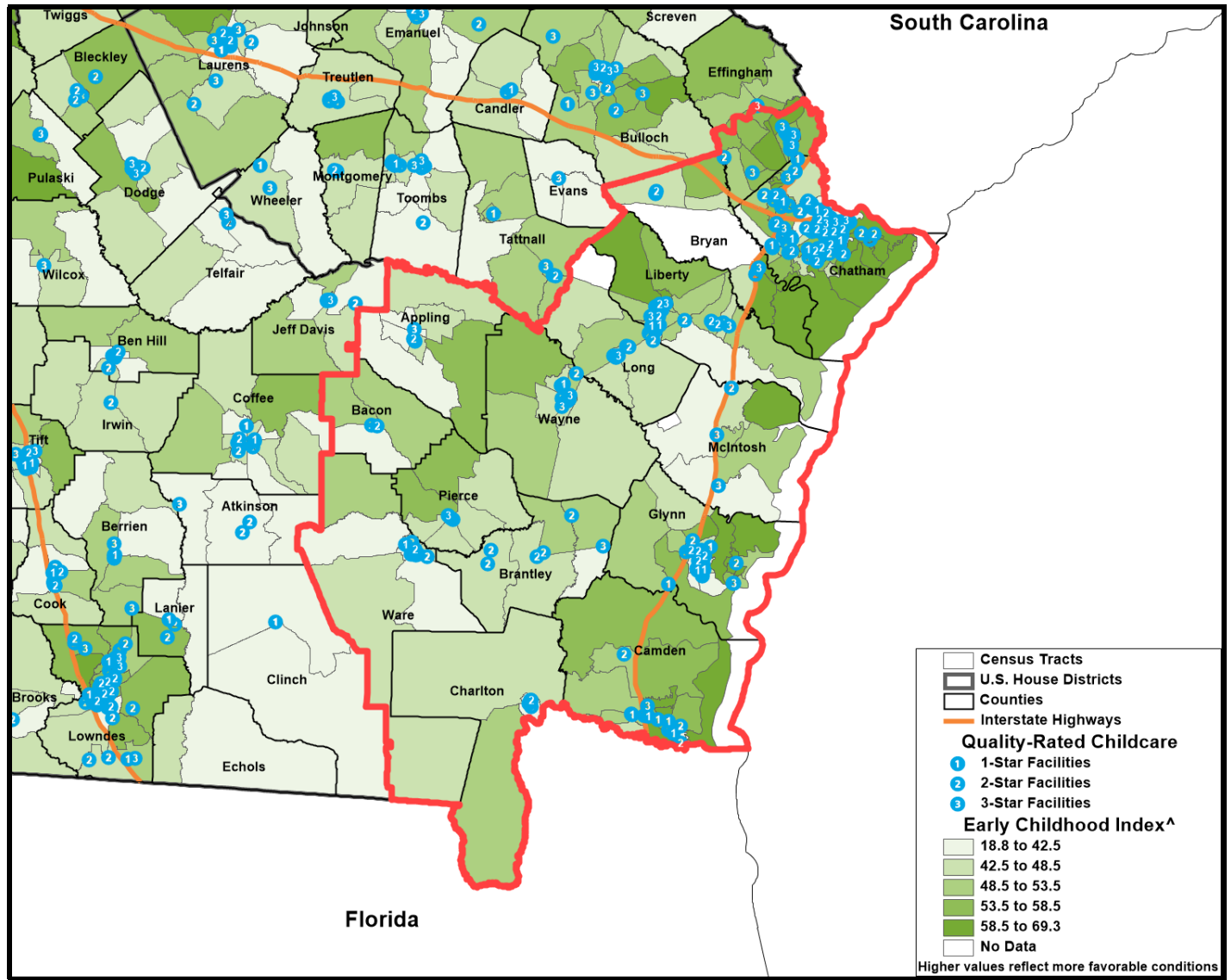


Georgia Congressional District 1 Early Childhood Profile



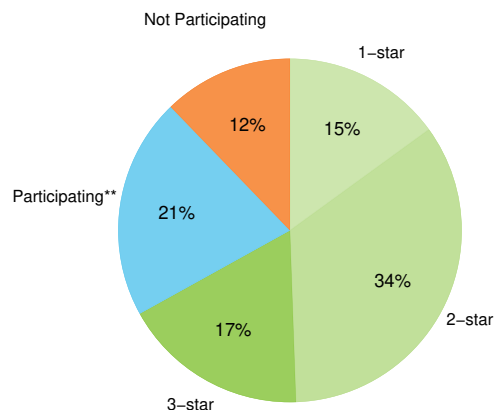
Children, ages 0-4 residing in Georgia Congressional District 1: **47,545**¹

Congressional District 1 Early Childhood Index Score: **50.5**; Statewide Early Childhood Index Score: **50.1**[^]

Early Care and Education Providers[▼]

	CD 01	State
Total Early Learning Providers²	516	4,987
Child Care Learning Centers	249	2,867
<i>Licensed to serve infants</i>	77%	85%
<i>Licensed to serve toddlers</i>	89%	92%
Family Child Care Learning Homes	163	1,172
<i>Licensed to serve infants</i>	79%	85%
<i>Licensed to serve toddlers</i>	97%	97%
Other Providers [†]	104	948
Total Licensed Capacity^{2 ‡}	23,735	344,939
Quality Rated: [#]	75%	72%
Child Care Learning Centers	22,757	337,954
Quality Rated: [#]	76%	73%
Family Child Care Learning Homes	978	6,985
Quality Rated: [#]	57%	46%

Quality Rated Licensed Early Learning Providers²



**Participating in the Quality Rated process, but not yet rated as of 1/1/2023.

Economic Status

	CD 01 #	CD 01 %	State %
Children under age 6 living below: ¹			
100% Poverty	12,393	22%	18%
150% Poverty	21,940	39%	31%
200% Poverty	28,252	51%	43%



Of every 20 children ages 0-5 in Congressional District 1, **10** are economically disadvantaged, including **4** living in poverty.¹

Program Utilization

	CD 01	State
Lottery Funded Georgia Pre-K ² *	6,127	71,401
At-risk children served ² *	36%	48%
Head Start and Early Head Start ³ *	1,628	22,069

Parental Employment

	CD 01	State
Population under age 6 living with parent ¹	53,648	711,914
Both parents or only parent in labor force	70%	70%
One parent in labor force, one not	20%	20%
No parent in labor force	11%	9%

[^] This index is composed of 9 indicators related to early childhood well-being measured at the Census tract level; higher values reflect more favorable conditions. For more information, visit gears.org/research/readiness_radar.

[†] This category represents entities not subject to licensing by The Georgia Department of Early Care and Learning (DECAL) such as local school systems. Only providers known to DECAL are included.

[‡] Licensed Capacity indicates the maximum number of children a facility is permitted to serve based on square footage, and is typically larger than the actual number of children served.

[#] *Quality Rated* is Georgia's Quality Rating and Improvement System for child care and early learning programs. See qualityrated.org for more information.

[★] There may be overlap between Pre-K and Head Start enrollments due to braided and blended funding sources, so these categories are not summative.

[♣] Rate per 1,000 population

^{*} Insufficient data

Child and Maternal Health

	CD 01 #	CD 01 %	State %
Births ⁴	9,880	43.9 [★]	37.2 [★]
Births to mothers who are not high school graduates ⁴	1,077	10.9%	11.9%
Births to girls ages 15-19 ⁴	587	23.5 [★]	18.3 [★]
Low birth weight babies ⁴	1,034	10.5%	10.2%
Preterm babies ⁴	1,222	12.4%	11.7%
Infant mortality rate ⁵		7.1 [★]	7.1 [★]
Children under age 6 without health insurance ¹	3,045	5%	5%

QUALITY CHILD CARE IS OUT OF REACH

In many parts of Georgia, a year of quality care for an infant or toddler costs more than a year of in-state tuition at a four-year university!



Infographic courtesy of our partner, *Think Babies*

Sources:

1. U.S. Census Bureau, American Community Survey (2022)
2. Georgia Department of Early Care and Learning, 1/1/2023
3. The Office of Head Start Program Information Report, 11/2023
4. Georgia Department of Public Health, Office of Health Indicators for Planning, Birth Statistical File (2018-22). Counts represent the 5-year average. Rates are calculated using 2018-22 American Community Survey data for the denominators.
5. Georgia Department of Public Health, Office of Health Indicators for Planning (2013-22).

The Georgia Early Childhood Profiles are produced by GEEARS: Georgia Early Education Alliance for Ready Students, with technical assistance from Neighborhood Nexus. GEEARS is a nonpartisan, nonprofit organization whose mission is support high-quality early learning and healthy development for Georgia's youngest children, from birth to five, by championing policies, promoting innovative and evidence-based practices, and building public will. These profiles highlight indicators relevant to early childhood and school readiness. To learn more, please visit www.gears.org.