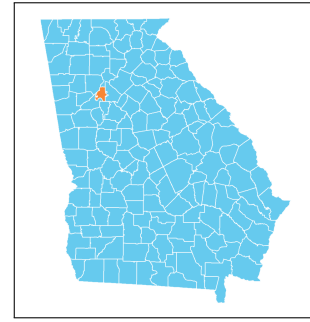


City of Atlanta Early Childhood Profile

The Georgia Early Childhood Profiles are produced by GEEARS: Georgia Early Education Alliance for Ready Students, with technical assistance from Neighborhood Nexus. GEEARS is a nonpartisan, nonprofit organization whose mission is support high-quality early learning and healthy development for Georgia's youngest children, from birth to five, by championing policies, promoting innovative and evidence-based practices, and building public will. These profiles highlight indicators relevant to early childhood and school readiness. To learn more, please visit www.geears.org.



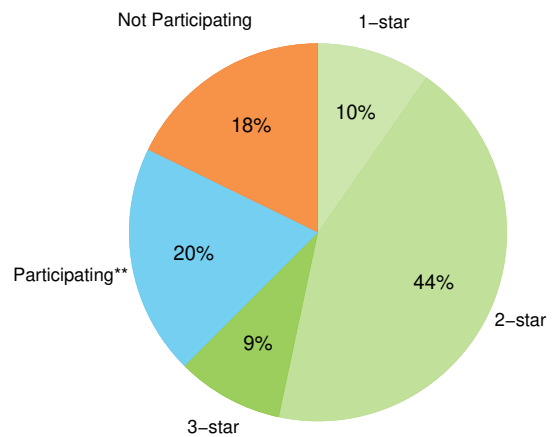
Early Care and Education Providers

	Atlanta	State
Total Early Learning Providers¹	237	4,774
Child Care Learning Centers	178	2,783
<i>Licensed to serve infants</i>	84%	85%
<i>Licensed to serve toddlers</i>	93%	93%
<i>Licensed to serve preschoolers</i>	98%	99%
Family Child Care Learning Homes	19	1,038
<i>Licensed to serve infants</i>	68%	84%
<i>Licensed to serve toddlers</i>	100%	97%
<i>Licensed to serve preschoolers</i>	89%	97%
Other Providers [†]	40	953
Total Licensed Capacity^{*1}	22,846	340,084
Quality Rated: [#]	60%	75%
Child Care Learning Centers	22,732	333,892
Quality Rated: [#]	60%	75%
<i>1-star programs</i>	10%	11%
<i>2-star programs</i>	40%	52%
<i>3-star programs</i>	10%	12%
Family Child Care Learning Homes	114	6,192
Quality Rated: [#]	47%	47%
<i>1-star programs</i>	5%	4%
<i>2-star programs</i>	32%	30%
<i>3-star programs</i>	11%	14%

Third Grade Assessment Results

	Atlanta	State
Students Tested, ELA⁴	3,914	127,195
Proficient/Distinguished Learners:	35%	35%
<i>White</i>	77%	48%
<i>Black or African-American</i>	22%	24%
<i>Hispanic or Latino</i>	31%	25%
<i>Limited English Proficiency</i>	17%	14%
<i>Economically Disadvantaged</i>	24%	27%
Students Tested, Math⁴	3,913	127,119
Proficient/Distinguished Learners:	41%	44%
<i>White</i>	83%	60%
<i>Black or African-American</i>	27%	29%
<i>Hispanic or Latino</i>	37%	34%
<i>Limited English Proficiency</i>	28%	26%
<i>Economically Disadvantaged</i>	30%	35%

Quality Rated Licensed Early Learning Providers¹



Program Enrollment

	Atlanta	State
Kindergarten ²	3,648	114,666
Head Start and Early Head Start ³	2,574	20,825

[†]The "Other Providers" category represents entities not subject to licensing by The Georgia Department of Early Care and Learning (DECAL) such as local school systems. Only providers known to DECAL are included.

[#]*Quality Rated* is Georgia's Quality Rating and Improvement System for child care and early learning programs. For more information, visit qualityrated.org.

[♣]Licensed Capacity indicates the maximum number of children a facility is permitted to serve based on square footage, and is typically larger than the actual number of children served.

* Insufficient data

** Participating in the Quality Rated process, but not yet rated as of 1/1/2026.

Program Utilization

	DeKalb	Fulton
Babies Can't Wait ^{▲5}	1,156	1,101
Childcare and Parent Services (CAPS) ^{▲5}	7,391	9,363
Georgia Home Visiting ^{▲5}	248	0

Parental Employment

	Atlanta	State
Population under age 6 living with parent⁶	27,738	733,521
Both parents or only parent in labor force	76%	68%
One parent in labor force, one not	16%	23%
No parent in labor force	9%	9%

Family, Health, and Services

	Atlanta #	Atlanta %	State %
Children under age 6 living below: ⁶			
100% Poverty	6,302	22%	20%
150% Poverty	9,136	32%	31%
200% Poverty	11,423	40%	42%
Children under age 6 without health insurance ⁶	1,499	5%	5%
Limited English-speaking households ⁶	4,771	2%	3%
	DeKalb	Fulton	State
Substantiated Abuse/Neglect Reports (unduplicated) ⁷	3.3 [†]	3.7 [†]	4.5 [†]
Births to mothers who are not high school graduates ⁸	10%	7%	11%
Births to girls ages 15-19 ⁸	17.4 [‡]	10.7 [‡]	16.3 [‡]
Low birth weight babies ⁸	11%	12%	10%
Preterm babies ⁸	11%	12%	12%
Asthma-related ER visits (ages 0-4) ⁸	136.3 [‡]	149.8 [‡]	91.6 [‡]

† Rate per 1,000 population

‡ Rate per 10,000 population

* Insufficient data

▲ All programs ensure the highest quality data to the extent possible. Numbers represent total children enrolled in the program at any time during the year, which is generally greater than the number enrolled at any given point in time. Each agency and program participating in GA CACDS maintains its own data, and each one has protocols for data entry and data quality. GA CACDS does not conduct any additional data quality measures.

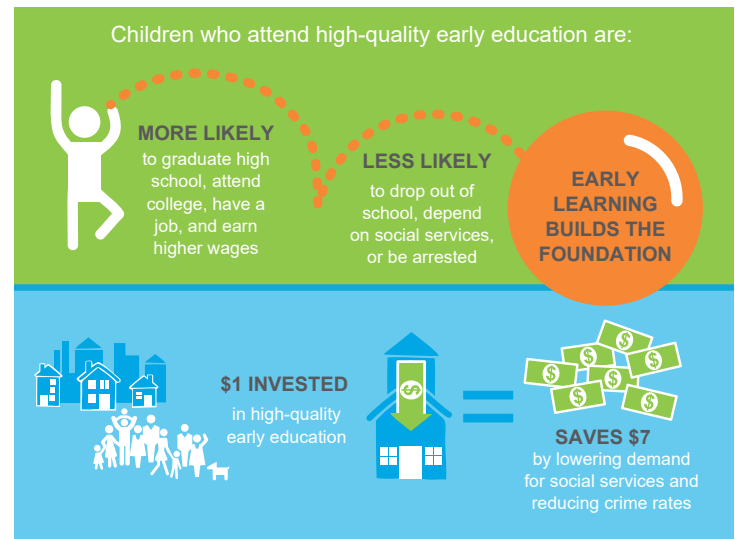
Economic Status



Of every 20 children ages 0-5 in the City of Atlanta **8 are economically disadvantaged, including 4 living in poverty.**⁶

Children by Race and Ethnicity

	Atlanta	State
Population under age 5⁶	24,663	636,230
White	33%	43%
Black or African-American	47%	32%
Asian and Pacific Islander	3%	4%
Other race or multiracial	17%	22%
Hispanic or Latino (any race)	10%	17%



Sources:

1. Georgia Department of Early Care and Learning, 1/1/2026
2. Georgia Department of Education, FTE 2026-1
3. The Office of Head Start Program Information Report, 1/2025
4. Georgia Governor's Office of Student Achievement, SY 2025
5. Georgia's Cross-Agency Child Data System (CACDS), FY 2024
6. U.S. Census Bureau, American Community Survey (2020-24)
7. KIDS COUNT, 2023
8. Georgia Department of Public Health, OASIS (annual average 2022-24)