

## Short Title

NOONDAY CREEK TRAIL EXTENSION FROM SR 92 TO NOONDAY CREEK PARK

## GDOT Project No.

0016015

## Federal ID No.

N/A

## Status

Completed

## Service Type

Last Mile Connectivity / Sidepaths and Trails

## Sponsor

City of Woodstock

## Jurisdiction

Cherokee County

## Analysis Level

Exempt from Air Quality Analysis (40 CFR 93)

## Existing Thru Lane

N/A

LCI

☐

## Planned Thru Lane

N/A

Flex

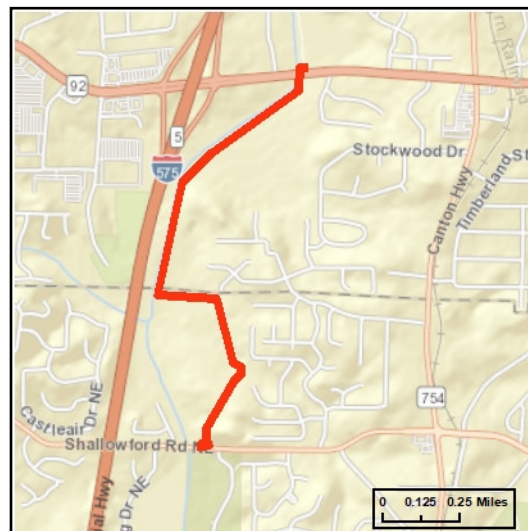
☐

## Network Year

TBD

## Corridor Length

1.8 miles



## Detailed Description and Justification

This project provides an important regional trail connection, linking the City of Woodstock and Cherokee County trails with the Cobb County trail system, providing an alternative transportation route, supporting both bicycles and pedestrians. This 1.8-mile extension closes half of the roughly four mile gap between the Noonday Creek Trailhead on Highway 92 in the City of Woodstock and the Noonday Creek Bells Ferry Trailhead in Cobb County within the Town Center CID. The connection allows trail users now making over 200,000 annual trips on the existing 1.5 mile Noonday Creek Trail segment to access critical destinations in Cobb County.

Phase Status & Funding Information		Status	FISCAL YEAR	TOTAL PHASE COST	BREAKDOWN OF TOTAL PHASE COST BY FUNDING SOURCE			
					FEDERAL	STATE	BONDS	LOCAL/PRIVATE
PE	Transportation Alternatives (Section 133(h)) - Urban (>200K) (ARC)	AUTH	2019	\$310,000	\$248,000	\$0,000	\$0,000	\$62,000
PE	Surface Transportation Block Grant (STBG) Program - Urban (>200K) (ARC)	AUTH	2022	\$75,000	\$60,000	\$0,000	\$0,000	\$15,000
PE	Transportation Alternatives (Section 133(h)) - Urban (>200K) (ARC)	AUTH	2022	\$796,955	\$637,564	\$0,000	\$0,000	\$159,391
ROW	Surface Transportation Block Grant (STBG) Program - Urban (>200K) (ARC)	AUTH	2021	\$670,000	\$536,000	\$0,000	\$0,000	\$134,000
ROW	Transportation Alternatives (Section 133(h)) - Urban (>200K) (ARC)	AUTH	2021	\$392,000	\$256,000	\$0,000	\$0,000	\$136,000
CST	Transportation Alternatives (TA) Set-aside - Urbanized Areas with Populations over 200,000	AUTH	2023	\$5,927,058	\$4,741,646	\$0,000	\$0,000	\$1,185,412
				\$8,171,013	\$6,479,210	\$0,000	\$0,000	\$1,691,803

SCP: Scoping PE: Preliminary engineering / engineering / design / planning PE-OV: GDOT oversight services for engineering ROW: Right-of-way Acquisition  
 UTL: Utility relocation CST: Construction / Implementation ALL: Total estimated cost, inclusive of all phases



For additional information about this project, please call (404) 463-3100 or email [transportation@atlantaregional.com](mailto:transportation@atlantaregional.com).

