

# **Final Project Funding Recommendations (2012 Solicitation Cycle)**



**Last Mile Connectivity Program**  
**General Roadway Operations and Safety Program**  
**Freight Operations and Safety Program**

*This document contains final recommendations made in December 2012 by the Atlanta Regional Commission and the Georgia Department of Transportation. More detailed information on scope, schedule and phase costs for each project will be available on fact sheets prepared following incorporation of these projects into the region's Transportation Improvement Program (anticipated to be completed no later than December 21, 2012).*

# Table of Contents

---

Background on Funding Recommendations .....Pages 1-4

Project Funding Recommendations

Central Subregion ..... Pages C1 and C2

North Subregion ..... Pages N1 and N2

Northeast Subregion ..... Pages NE1 and NE2

East Subregion ..... Pages E1 and E2

Southeast Subregion ..... Pages SE1 and SE2

Southwest Subregion ..... Pages SW1 and SW2

West Subregion ..... Pages W1 and W2

Northwest Subregion ..... Pages NW1 and NW2

Appendix 1

Preliminary List of Corridors and Intersections Selected for Prioritized Signal Upgrade Program – Phase 1 (Project AR-074A)

Appendix 2

Preliminary List of Corridors Selected for Prioritized Signal Retiming Program – Phase 1 (Project AR-075A)

Appendix 3

Map of Corridors and Intersections Initially Recommended for Projects AR-074A and AR-075A

# Background on Funding Recommendations



Last Mile  
Connectivity Program



General Roadway  
Operations and Safety  
Program



Freight Operations  
and Safety Program

## Summary

The Atlanta Regional Commission (ARC) and the Georgia Department of Transportation (GDOT) are pleased to announce final recommendations resulting from the 2012 project solicitation process to fund locally identified priorities under three programs. The projects to be funded will address a wide array of mobility, safety and access issues encountered by motorists, pedestrians, freight distributors, bicyclists and transit users around the region. Many recommended projects address the needs of multiple system users, so the three programs are considered complementary in nature, not as stand-alone funding “silos”.

A total of 63 projects were determined to be consistent with parameters of the solicitation process and justified thoroughly enough to receive full funding for implementation. Three projects are already in the region’s short-range Transportation Improvement Program (TIP) and requested incremental funding to complete the design agreed upon by the sponsoring agency and community stakeholders. Federal funding commitment for all 63 recommended projects totals \$95.1 million. Of this total, approximately \$4.3 million of funding was previously committed in the TIP to a handful of projects identified in need of incremental funding, so new funding awarded through this project solicitation process is actually about \$90.8 million.

The table below presents a summary of the funding commitments by program:

Program	Number of Projects	Total Federal Funding Commitment	Percent of All Funding Committed
Last Mile Connectivity	22	\$23,671,850	24.9%
General Roadway Operations and Safety	32	\$48,108,143	50.6%
Freight Operations and Safety	9	\$23,332,610	24.5%
<b>Totals</b>	<b>63</b>	<b>\$95,112,603</b>	<b>100.0%</b>

## Regional and State Planning Context

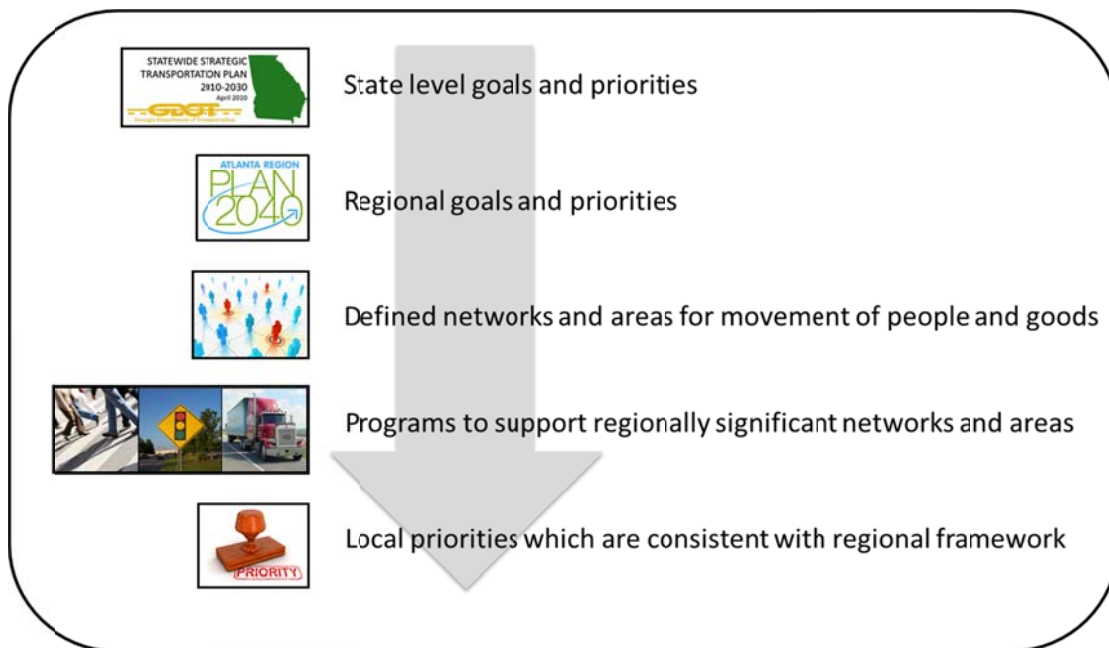
In July 2011, following a three-year community engagement process, the Atlanta region adopted PLAN 2040, which defines our long range vision for transportation. The regional plan was developed to complement the Statewide Strategic Transportation Plan approved by Governor Perdue in June 2010. It also conforms to all federal and state planning requirements.

PLAN 2040 includes major investments for maintaining our existing infrastructure, as well several large-scale new investments to improve mobility, such as new interchanges, managed lanes and transit lines. It defines several priority networks, along corridors and within activity centers where the need to move the greatest volume of people and goods is the highest. These networks receive first consideration for limited federal and state funding.

## Programs to Support Local Priorities

The plan also includes several programs which provide financial resources for cities and counties to identify and prioritize mobility, safety and accessibility issues and to then develop cost-effective solutions which can be supported by citizens and local leaders. These planning activities are supported at various levels. A County Transportation Plan (CTP) program helps county and city governments understand movements between communities within the county and to/from adjacent counties. These plans form the building blocks of the regional plan. Similar programs exist to examine needs and identify solutions along major transportation corridors and within town centers and other significant employment areas.

The figure below provides a schematic representation of how the three funding programs and recommended projects fit within well-established state and regional policies and priorities.



All of these plans, regardless of whether the geography studied is the entire state, the region, a county, a city or a single transportation corridor, recognize that localized small-scale investments can also have significant impacts on the ability to drive, walk, bike or take transit safely and efficiently. Providing travel options, particularly for short trips, can also be a cost-effective way of addressing transportation challenges within a community. Improvements at the local level, such as adding a turn lane at a key congested intersection, building a sidewalk connecting a transit station with nearby office buildings, or installing bike lanes which allow school children to safely ride between their neighborhood and a nearby school, are all ways to reduce community level roadway congestion without expensive, disruptive and controversial major capacity projects.

## **Project Solicitation Process**

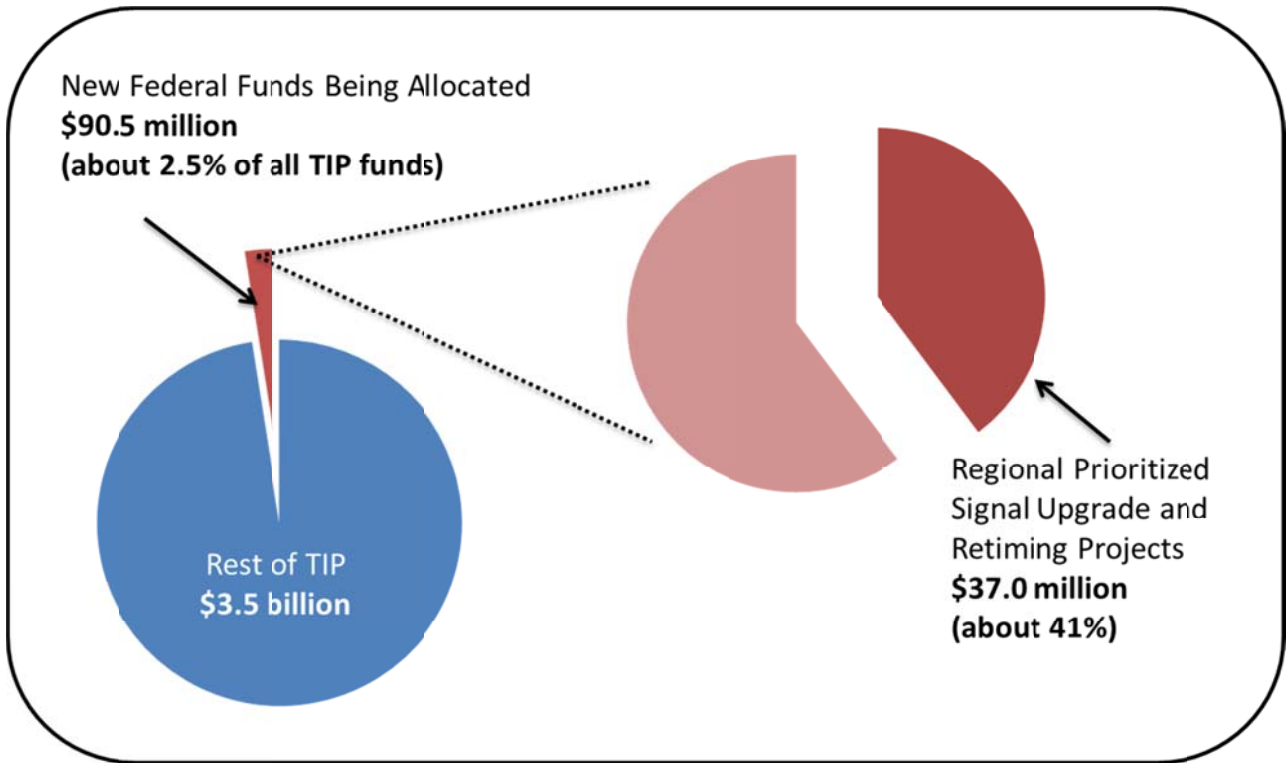
In the spring of 2012, ARC announced a “solicitation” for small-scale projects which could be implemented by local governments to address mobility, safety and access needs identified through previous planning activities.

As agreed upon through extensive collaboration with local government staff and other stakeholders who participate regularly in the regional planning process, projects to be funded had to be consistent with the regional priority networks as described earlier. This restriction on eligibility would ensure that maximum regional impact could be achieved, even though the projects themselves were relatively small in scope. Beyond this basic regional “framework”, local governments within each county were vested with responsibility to work together to prioritize their own needs and suggest projects for funding consideration.

Prioritized requests were submitted for consideration to ARC in late May. After an extensive review process involving multiple meetings with GDOT and a reassessment of the region’s financial situation in light of new federal legislation signed into law on June 6, coupled with the failure of the Transportation Investment Act (TIA) referendum on July 31, an initial set of funding recommendations was developed. These preliminary recommendations were released on October 1. Sponsors then reviewed scopes, schedules and phase costs for all projects and provided feedback to ARC. A number of changes to the preliminary recommendations were made as a result of this review process and have been reflected in these final recommendations. A field review of projects proposed to receive funding was also conducted by ARC staff in the latter stages of the process to independently verify that each project conformed to the eligibility criteria and emphasis areas defined for the three programs.

A major recommendation involves the commitment of approximately \$37 million to two signal programs, developed through joint consultation of GDOT and ARC. This represents 41% of the \$90.5 million of new funding being awarded across all 63 projects as a result of this solicitation process, as shown in the figure on the following page.

One signal program focuses on upgrading equipment at over 100 intersections along more than 40 corridors across the region, while the other will result in better coordination of existing signals at about 1,400 intersections on 80 or more corridors. Appendices 1 and 2 provide a preliminary list of intersections and corridors identified for funding consideration. Some changes in the final locations of improvements to be funded are likely pending the outcome of ongoing review activities by GDOT, ARC and local governments. The latest information on this program will be available on ARC’s website once decisions are finalized.



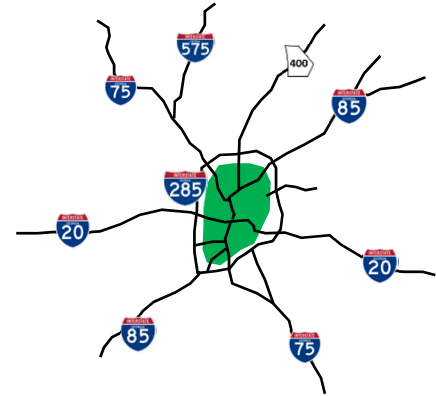
### Additional Information

More detailed information on scope, schedule and phase costs for each project will be available following incorporation of these projects into the region's Transportation Improvement Program. That milestone is anticipated to be completed no later than December 21, 2012. Information will be available through ARC's project database portal and included on fact sheets posted on the online interactive mapping site. Both the database and mapping site are accessible from the TIP website at [www.atlantaregional.com/tip](http://www.atlantaregional.com/tip).

# Final Project Funding Recommendations – Central Subregion

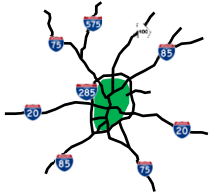
- Last Mile Connectivity Program
- General Roadway Operations and Safety Program
- Freight Operations and Safety Program

*This fact sheet provides a summary list of final recommendations made in December 2012 by the Atlanta Regional Commission and the Georgia Department of Transportation. More detailed information on scope, schedule and phase costs for each project will be available on fact sheets prepared following incorporation of these projects into the region's Transportation Improvement Program (anticipated to be completed no later than December 21, 2012).*



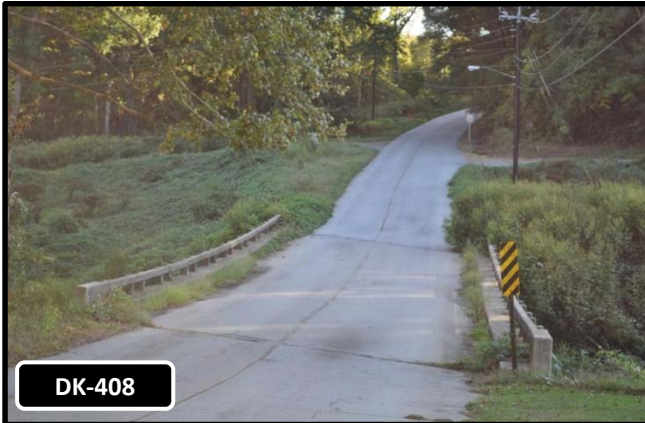
## RECOMMENDED FOR FULL IMPLEMENTATION FUNDING

Project Number	Project Name	Sponsor	Program	Federal Funds Committed
AR-074A	Prioritized Regionwide Signal Upgrade Program - Phase 1	Georgia DOT	Roadway Ops/Safety	\$ 15,460,000
AR-074B	Prioritized Regionwide Signal Upgrade Program - Phase 2	Georgia DOT	Freight Ops/Safety	\$ 11,600,000
AR-075A	Prioritized Regionwide Signal Retiming Program - Phase 1	Georgia DOT	Roadway Ops/Safety	\$ 5,888,000
AR-075B	Prioritized Regionwide Signal Retiming Program - Phase 2	Georgia DOT	Freight Ops/Safety	\$ 4,000,000
AT-273	Moore's Mill Road between Bolton Road and Adams Drive in City of Atlanta - Multimodal Roadway Extension and Transit Layover Facility	City of Atlanta	Roadway Ops/Safety	\$ 2,000,000
AT-274	Cleveland Avenue between US 19/41 (Metropolitan Parkway) and Browns Mill Road in City of Atlanta - Pedestrian Mobility Improvement Project	City of Atlanta	Last Mile	\$ 1,000,000
AT-275	Campbellton Road between Greenbriar Parkway and Pinehurst Drive in City of Atlanta - Pedestrian Mobility Improvement Project	City of Atlanta	Last Mile	\$ 1,000,000
AT-276	Boulevard between US 78/278 (Ponce de Leon Avenue) and Woodward Avenue in City of Atlanta - Pedestrian Mobility Improvement Project	City of Atlanta	Last Mile	\$ 1,000,000
AT-277	Cycle Atlanta: Phase 1.0 - Bicycle Mobility Improvement Project	City of Atlanta	Last Mile	\$ 2,000,000
AT-278	Midtown Atlanta Regional Activity Center - Pedestrian Mobility and Safety Improvements	City of Atlanta / Midtown Alliance	Last Mile	\$ 1,421,600
AT-279	US 19 (Spring Street) between US 19 (Peachtree Street) and 17th Street in City of Atlanta - Pedestrian Mobility and Safety Improvements	City of Atlanta / Midtown Alliance	Last Mile	\$ 1,948,000
AT-280	US 23 (Moreland Avenue) at Arkwright Place in City of Atlanta - Multimodal Intersection Improvements	City of Atlanta	Roadway Ops/Safety	\$ 1,000,000
AT-281	SR 154 (Memorial Drive) between US 23 (Moreland Avenue) and SR 155 (Candler Road) in City of Atlanta - Multimodal Safety Improvements	City of Atlanta	Last Mile	\$ 2,000,000
AT-282	Atlanta Traffic Control Center - ITS System Expansion / Congestion Reduction and Traffic Flow Improvement Project	City of Atlanta	Roadway Ops/Safety	\$ 400,000
DK-408	Key Road and Constitution Road at Entrenchment Creek in DeKalb County - Bridge Deck Replacements	DeKalb County	Freight Ops/Safety	\$ 1,292,000
FS-232	Road Sign Replacement Program in City of East Point	City of East Point	Roadway Ops/Safety	\$ 480,000
FS-233	Cleveland Avenue, Sylvan Road, Virginia Avenue, and Norman Berry Drive in City of East Point - Resurfacing	City of East Point	Roadway Ops/Safety	\$ 1,920,000
M-AR-312	MARTA Rail Stations - Bicycle and Pedestrian Access Improvements	MARTA	Last Mile	\$ 820,000



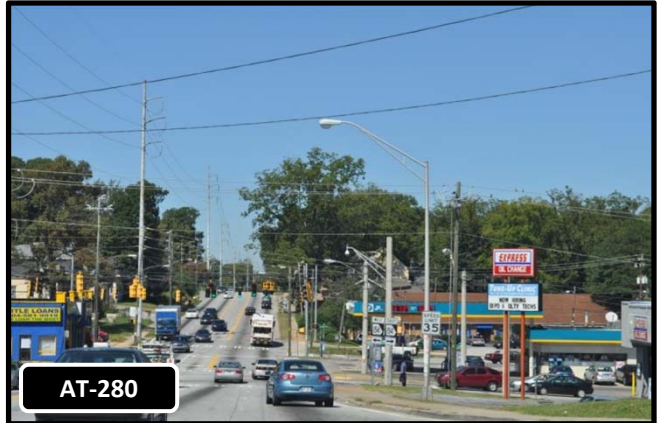
## Sample Projects Recommended for Central Subregion

*This fact sheet provides representative examples of projects recommended for funding under three programs by the Atlanta Regional Commission and the Georgia Department of Transportation in December 2012. More detailed information on scope, schedule and phase costs for each project will be available on fact sheets prepared following incorporation of these projects into the region's Transportation Improvement Program (anticipated to be completed no later than December 21, 2012).*



**DK-408**

*The Entrenchment Creek bridge deck on Key Rd. in DeKalb will be replaced, providing an alternate route for truck traffic.*



**AT-280**

*Improvements will be made at the congested intersection of Moreland Ave. and Arkwright Pl. in Atlanta.*



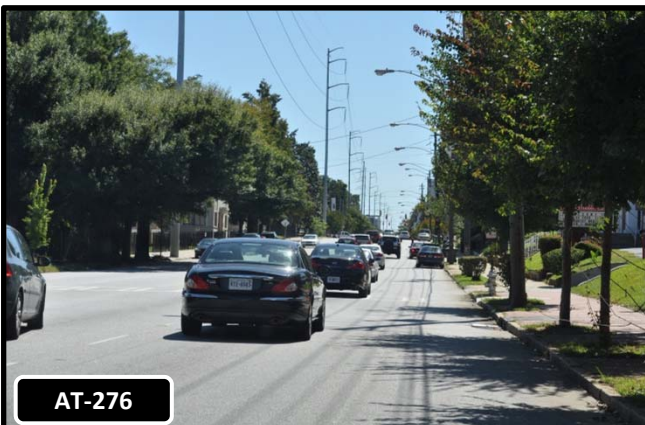
**M-AR-312**

*Bicycle and pedestrian accessibility improvements will be made at several MARTA rail stations.*



**AR-074**

*Signals along several key travel corridors in the area will be upgraded or retimed under a regional GDOT program.*



**AT-276**

*Pedestrian crossing improvements will be made along Boulevard in Atlanta.*



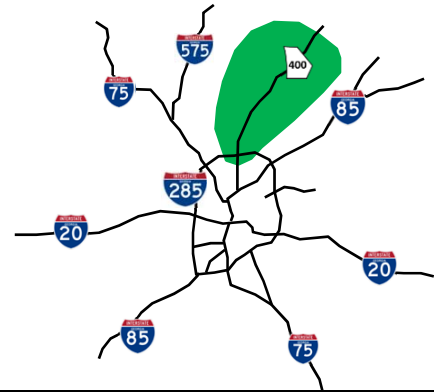
**FS-233**

*Several streets will be repaved in East Point, including Cleveland Ave.*

# Final Project Funding Recommendations – North Subregion

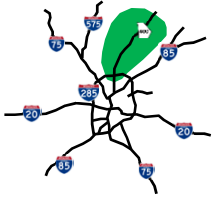
- Last Mile Connectivity Program
- General Roadway Operations and Safety Program
- Freight Operations and Safety Program

*This fact sheet provides a summary list of final recommendations made in December 2012 by the Atlanta Regional Commission and the Georgia Department of Transportation. More detailed information on scope, schedule and phase costs for each project will be available on fact sheets prepared following incorporation of these projects into the region's Transportation Improvement Program (anticipated to be completed no later than December 21, 2012).*



## RECOMMENDED FOR FULL IMPLEMENTATION FUNDING

Project Number	Project Name	Sponsor	Program	Federal Funds Committed
AR-074A	Prioritized Regionwide Signal Upgrade Program - Phase 1	Georgia DOT	Roadway Ops/Safety	\$ 15,460,000
AR-074B	Prioritized Regionwide Signal Upgrade Program - Phase 2	Georgia DOT	Freight Ops/Safety	\$ 11,600,000
AR-075A	Prioritized Regionwide Signal Retiming Program - Phase 1	Georgia DOT	Roadway Ops/Safety	\$ 5,888,000
AR-075B	Prioritized Regionwide Signal Retiming Program - Phase 2	Georgia DOT	Freight Ops/Safety	\$ 4,000,000
DK-409	Chamblee Dunwoody Road from Cambridge Drive to Valley View Road in City of Dunwoody - Bicycle and Pedestrian Facilities	City of Dunwoody	Last Mile	\$ 640,000
DK-410	Perimeter Activity Center Strategic Bicycling Implementation Plan	Perimeter CIDs	Last Mile	\$ 80,000
FN-280	SR 9 (Alpharetta Highway) at Bethany Bend in City of Milton - Intersection Concept Study	City of Milton	Roadway Ops/Safety	\$ 60,000
FN-282	SR 9 (Roswell Road) from Atlanta City Limits to Abernathy Road in City of Sandy Springs - ITS System Expansion / Congestion Reduction and Traffic Flow Improvement Project	City of Sandy Springs	Roadway Ops/Safety	\$ 1,320,000
FN-283	Big Creek Parkway Planning Study in City of Roswell	City of Roswell / North Fulton CID	Roadway Ops/Safety	\$ 280,000
FN-284	Perimeter Activity Center - ITS Upgrades and System Expansion / Congestion Reduction and Traffic Flow Improvement Project	Perimeter CIDs	Roadway Ops/Safety	\$ 800,000
FN-285	Multimodal Connections Study Between Old Alabama Road and State Bridge Road in City of Johns Creek	City of Johns Creek	Roadway Ops/Safety	\$ 200,000
FN-286	Bicycle, Pedestrian, and Trail Plan in City of Sandy Springs	City of Sandy Springs	Last Mile	\$ 80,000
FT-328	Traffic Signal Cabinet Upgrades at 15 Locations in Forsyth County	Forsyth County	Roadway Ops/Safety	\$ 320,000
FN-281A	ITS System Expansion Along State Bridge Road, Abbotts Bridge Road and McGinnis Ferry Road in City of Johns Creek - ITS System Expansion / Congestion Reduction and Traffic Flow Improvement Project	City of Johns Creek	Roadway Ops/Safety	\$ 328,000
FN-281B	ITS Traffic Control Center Expansion in City of Johns Creek - ITS System Expansion / Congestion Reduction and Traffic Flow Improvement Project	City of Johns Creek	Roadway Ops/Safety	\$ 116,000
FN-281C	ITS System Adaptive Signal Control Software Upgrade and Backup Power Along Multiple Corridors Throughout City of Johns Creek - ITS System Expansion / Congestion Reduction and Traffic Flow Improvement Project	City of Johns Creek	Roadway Ops/Safety	\$ 360,000



## Sample Projects Recommended for North Subregion

*This fact sheet provides representative examples of projects recommended for funding under three programs by the Atlanta Regional Commission and the Georgia Department of Transportation in December 2012. More detailed information on scope, schedule and phase costs for each project will be available on fact sheets prepared following incorporation of these projects into the region's Transportation Improvement Program (anticipated to be completed no later than December 21, 2012).*



**FN-280**

*Options to improve safety will be developed for the intersection of SR 9 and Bethany Bend in Milton.*



**DK-410**

*A plan to improve biking conditions within Perimeter Center will be prepared.*



**FN-283**

*An extension of Big Creek Parkway to connect Mansell Rd. and Holcomb Bridge Rd. in Roswell will be studied.*



**FN-281A**

*ITS will be implemented along several corridors in Johns Creek, including this section of Abbots Bridge Rd.*



**AR-074**

*Signals along several key travel corridors in the area will be upgraded or retimed under a regional GDOT program.*



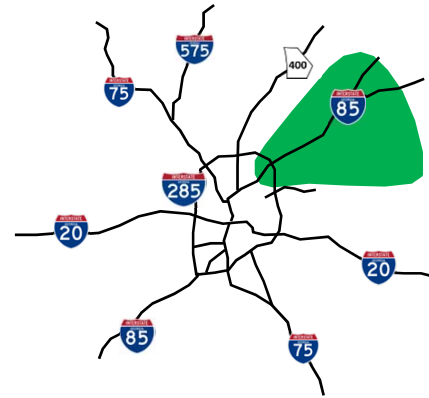
**FT-328**

*Fifteen traffic signal cabinets in Forsyth County will be upgraded.*

# Final Project Funding Recommendations – NE Subregion

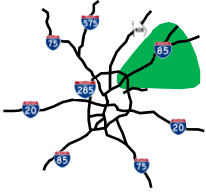
- Last Mile Connectivity Program
- General Roadway Operations and Safety Program
- Freight Operations and Safety Program

*This fact sheet provides a summary list of final recommendations made in December 2012 by the Atlanta Regional Commission and the Georgia Department of Transportation. More detailed information on scope, schedule and phase costs for each project will be available on fact sheets prepared following incorporation of these projects into the region's Transportation Improvement Program (anticipated to be completed no later than December 21, 2012).*



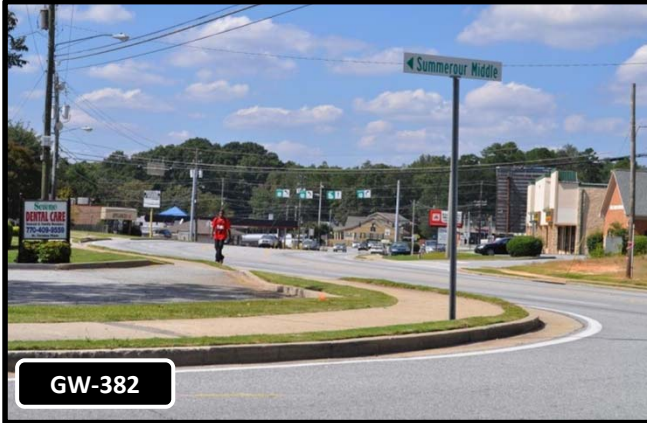
## RECOMMENDED FOR FULL IMPLEMENTATION FUNDING

Project Number	Project Name	Sponsor	Program	Federal Funds Committed
AR-074A	Prioritized Regionwide Signal Upgrade Program - Phase 1	Georgia DOT	Roadway Ops/Safety	\$ 15,460,000
AR-074B	Prioritized Regionwide Signal Upgrade Program - Phase 2	Georgia DOT	Freight Ops/Safety	\$ 11,600,000
AR-075A	Prioritized Regionwide Signal Retiming Program - Phase 1	Georgia DOT	Roadway Ops/Safety	\$ 5,888,000
AR-075B	Prioritized Regionwide Signal Retiming Program - Phase 2	Georgia DOT	Freight Ops/Safety	\$ 4,000,000
DK-411	Bicycle and Pedestrian Safety/Education/Training Program in City of Clarkston	City of Clarkston	Last Mile	\$ 72,000
GW-382	Beaver Run Road in Vicinity of Summerour Middle School in City of Norcross- Safe Routes to School (SRTS) Improvements / Bicycle and Pedestrian Facilities	Gwinnett Village CID / City of Norcross	Last Mile	\$ 976,000
GW-383	US 23 / SR 13 (Buford Highway) from Simpson Circle to North Berkeley Lake Road in Gwinnett County - Pedestrian Mobility Improvements	Gwinnett County	Last Mile	\$ 1,200,000
WA-031	SR 11 at Apalachee River in Walton County - Bridge Replacement	Walton County / Georgia DOT	Roadway Ops/Safety	\$ 2,074,000



## Sample Projects Recommended for Northeast Subregion

*This fact sheet provides representative examples of projects recommended for funding under three programs by the Atlanta Regional Commission and the Georgia Department of Transportation in December 2012. More detailed information on scope, schedule and phase costs for each project will be available on fact sheets prepared following incorporation of these projects into the region's Transportation Improvement Program (anticipated to be completed no later than December 21, 2012).*



**GW-382**

*Walking routes along Beaver Ruin Rd. near Summerour Middle School in Norcross will be improved.*



**GW-383**

*Pedestrian safety and access to transit along a section of Buford Highway will be improved.*



**AR-074**

*Signals along several key travel corridors in the area will be upgraded or retimed under a regional GDOT program.*



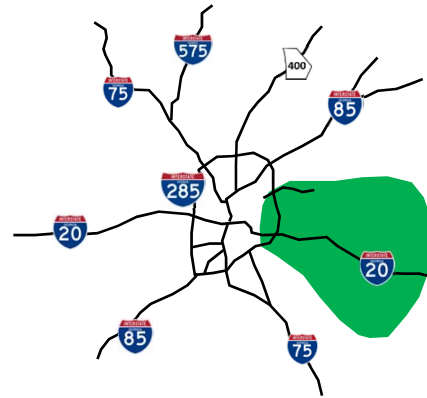
**WA-031**

*The SR 11 bridge at the Barrow/Walton County line will be replaced.*

# Preliminary Project Funding Recommendations – East Subregion

- Last Mile Connectivity Program
- General Roadway Operations and Safety Program
- Freight Operations and Safety Program

*This fact sheet provides a summary list of final recommendations made in December 2012 by the Atlanta Regional Commission and the Georgia Department of Transportation. More detailed information on scope, schedule and phase costs for each project will be available on fact sheets prepared following incorporation of these projects into the region's Transportation Improvement Program (anticipated to be completed no later than December 21, 2012).*



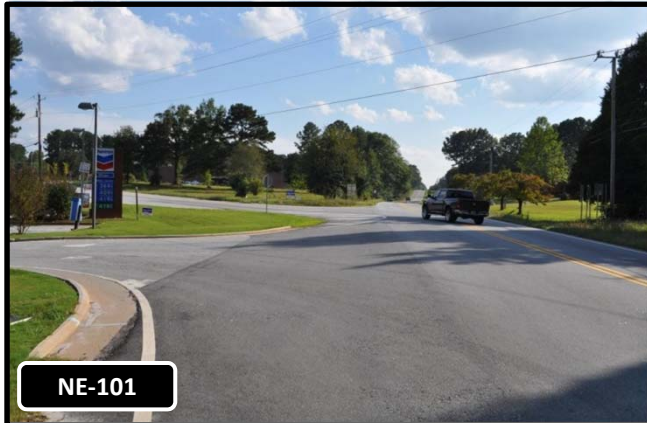
## RECOMMENDED FOR FULL IMPLEMENTATION FUNDING

Project Number	Project Name	Sponsor	Program	Federal Funds Committed
AR-074A	Prioritized Regionwide Signal Upgrade Program - Phase 1	Georgia DOT	Roadway Ops/Safety	\$ 15,460,000
AR-074B	Prioritized Regionwide Signal Upgrade Program - Phase 2	Georgia DOT	Freight Ops/Safety	\$ 11,600,000
AR-075A	Prioritized Regionwide Signal Retiming Program - Phase 1	Georgia DOT	Roadway Ops/Safety	\$ 5,888,000
AR-075B	Prioritized Regionwide Signal Retiming Program - Phase 2	Georgia DOT	Freight Ops/Safety	\$ 4,000,000
NE-099A	Crowell Road at Brown Bridge Road and Covington Bypass at Flat Shoals Road in Newton County - Intersection Improvement Project	Newton County	Roadway Ops/Safety	\$ 464,000
NE-099B	Crowell Road at Brown Bridge Road and Covington Bypass at Flat Shoals Road in Newton County - Intersection Improvement Project	Newton County	Roadway Ops/Safety	\$ 880,000
NE-100	SR 81 (Emory Street) Over I-20 Between Cities of Covington and Oxford - Bicycle and Pedestrian Bridge and Other Facilities	City of Covington / City of Oxford	Last Mile	\$ 594,000
NE-101	SR 81 at SR 142 in Newton County - Intersection Improvements	Newton County	Roadway Ops/Safety	\$ 752,000
RO-255	Transition Plan for Upgrading Pedestrian Facilities to Comply with Americans with Disabilities Act (ADA) in Rockdale County	Rockdale County	Last Mile	\$ 80,000



## Sample Projects Recommended for East Subregion

*This fact sheet provides representative examples of projects recommended for funding under three programs by the Atlanta Regional Commission and the Georgia Department of Transportation in December 2012. More detailed information on scope, schedule and phase costs for each project will be available on fact sheets prepared following incorporation of these projects into the region's Transportation Improvement Program (anticipated to be completed no later than December 21, 2012).*



NE-101

*The intersection of SR 81 and SR 142 north of Covington will be improved.*



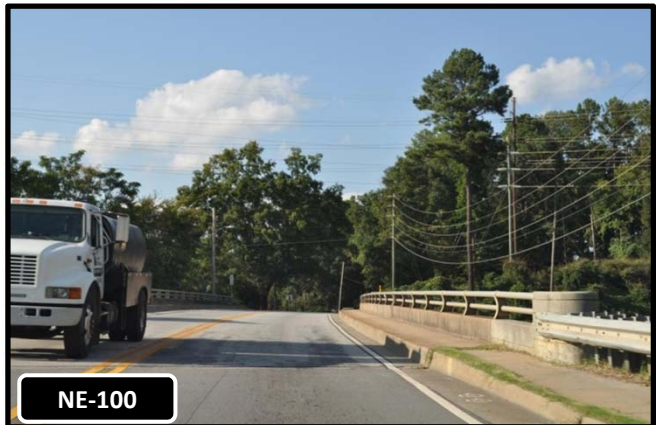
AR-074

*Signals along several key travel corridors in the area will be upgraded or retimed under a regional GDOT program.*



RO-255

*A plan for improving accessibility for disabled pedestrians will be developed for Rockdale County.*



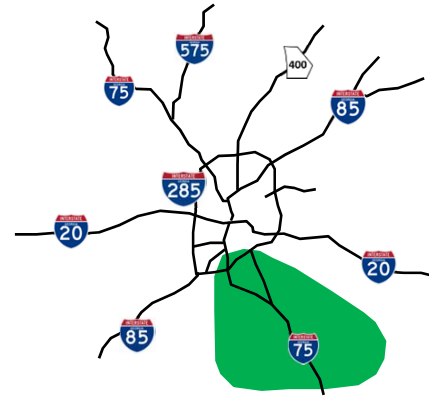
NE-100

*A new pedestrian bridge will be built, linking Oxford and Covington across I-20.*

# Final Project Funding Recommendations – SE Subregion

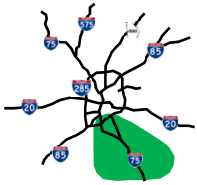
- Last Mile Connectivity Program
- General Roadway Operations and Safety Program
- Freight Operations and Safety Program

*This fact sheet provides a summary list of final recommendations made in December 2012 by the Atlanta Regional Commission and the Georgia Department of Transportation. More detailed information on scope, schedule and phase costs for each project will be available on fact sheets prepared following incorporation of these projects into the region's Transportation Improvement Program (anticipated to be completed no later than December 21, 2012).*



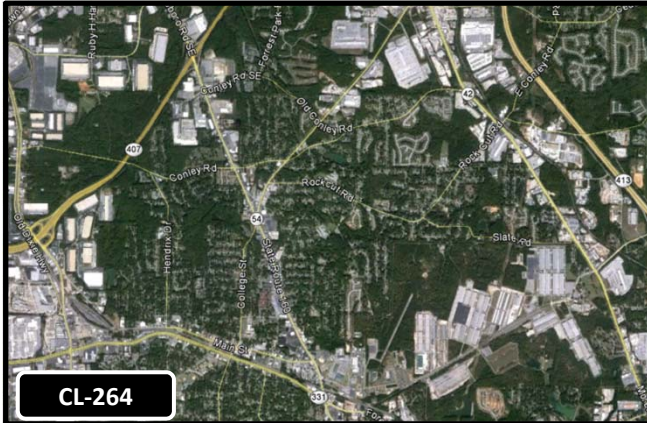
## RECOMMENDED FOR FULL IMPLEMENTATION FUNDING

Project Number	Project Name	Sponsor	Program	Federal Funds Committed
AR-074A	Prioritized Regionwide Signal Upgrade Program - Phase 1	Georgia DOT	Roadway Ops/Safety	\$ 15,460,000
AR-074B	Prioritized Regionwide Signal Upgrade Program - Phase 2	Georgia DOT	Freight Ops/Safety	\$ 11,600,000
AR-075A	Prioritized Regionwide Signal Retiming Program - Phase 1	Georgia DOT	Roadway Ops/Safety	\$ 5,888,000
AR-075B	Prioritized Regionwide Signal Retiming Program - Phase 2	Georgia DOT	Freight Ops/Safety	\$ 4,000,000
CL-264	Conley Road Extension Feasibility Study in Clayton County	Clayton County	Freight Ops/Safety	\$ 280,000
HE-194	Jodeco Road at Blackhall Road in Henry County - Intersection Improvements	Henry County	Roadway Ops/Safety	\$ 1,248,800



## Sample Projects Recommended for Southeast Subregion

*This fact sheet provides representative examples of projects recommended for funding under three programs by the Atlanta Regional Commission and the Georgia Department of Transportation in December 2012. More detailed information on scope, schedule and phase costs for each project will be available on fact sheets prepared following incorporation of these projects into the region's Transportation Improvement Program (anticipated to be completed no later than December 21, 2012).*



*The feasibility of creating a continuous east/west corridor along Conley Rd. in Clayton County will be determined.*



*The intersection of Jodeco Rd. and Blackhall Rd. will be signalized.*

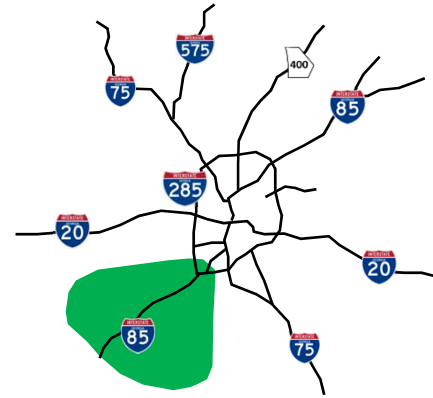


*Signals along several key travel corridors in the area will be upgraded or retimed under a regional GDOT program.*

# Final Project Funding Recommendations – SW Subregion

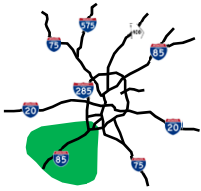
- Last Mile Connectivity Program
- General Roadway Operations and Safety Program
- Freight Operations and Safety Program

*This fact sheet provides a summary list of final recommendations made in December 2012 by the Atlanta Regional Commission and the Georgia Department of Transportation. More detailed information on scope, schedule and phase costs for each project will be available on fact sheets prepared following incorporation of these projects into the region's Transportation Improvement Program (anticipated to be completed no later than December 21, 2012).*



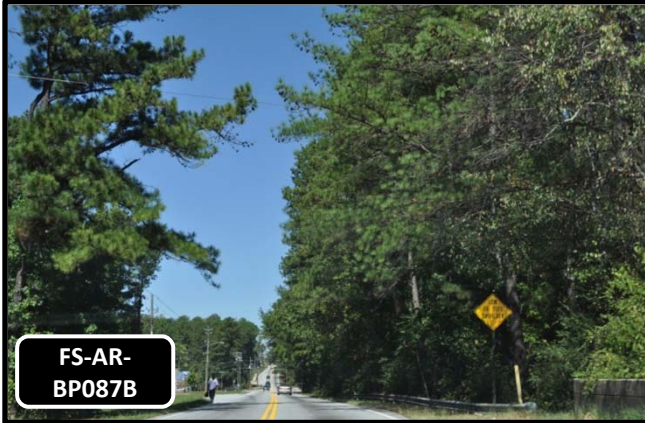
## RECOMMENDED FOR FULL IMPLEMENTATION FUNDING

Project Number	Project Name	Sponsor	Program	Federal Funds Committed
AR-074A	Prioritized Regionwide Signal Upgrade Program - Phase 1	Georgia DOT	Roadway Ops/Safety	\$ 15,460,000
AR-074B	Prioritized Regionwide Signal Upgrade Program - Phase 2	Georgia DOT	Freight Ops/Safety	\$ 11,600,000
AR-075A	Prioritized Regionwide Signal Retiming Program - Phase 1	Georgia DOT	Roadway Ops/Safety	\$ 5,888,000
AR-075B	Prioritized Regionwide Signal Retiming Program - Phase 2	Georgia DOT	Freight Ops/Safety	\$ 4,000,000
CL-267	Valley Hill Road at Flint River in Clayton County - Bridge Replacement	Clayton County	Roadway Ops/Safety	\$ 1,600,000
CW-075	SR 16 at Pylant Street and Dead Oak Creek Bridge on Pylant Street in City of Senoia - Intersection Improvements and Bridge Replacement	City of Senoia	Roadway Ops/Safety	\$ 1,600,000
FA-351	Roadway Resurfacing on SR 85 Connector, Brooks Woolsey Road and Ebenezer Road in Fayette County	Fayette County / Town of Brooks	Roadway Ops/Safety	\$ 745,600
FS-195	SR 279 (Old National Highway) from Flat Shoals Road to Sullivan Road in Fulton County - Pedestrian Facilities (includes some funding previously committed for existing project FS-195)	Fulton County	Last Mile	\$ 2,832,000
FS-AR-BP087B	Buffington Road from Royal South Parkway to US 29 (Roosevelt Highway) in Fulton County - Traffic Flow and Pedestrian Improvements (includes some funding previously committed for existing project FS-AR-BP087B)	Fulton County	Freight Ops/Safety	\$ 2,148,610
FA-352	Redwine Road and Starrs Mill School Complex Multi-Use Path	Fayette County / City of Peachtree City	Last Mile	\$ 858,400



## Sample Projects Recommended for Southwest Subregion

*This fact sheet provides representative examples of projects recommended for funding under three programs by the Atlanta Regional Commission and the Georgia Department of Transportation in December 2012. More detailed information on scope, schedule and phase costs for each project will be available on fact sheets prepared following incorporation of these projects into the region's Transportation Improvement Program (anticipated to be completed no later than December 21, 2012).*



**FS-AR-  
BP087B**

*Truck operations and pedestrian safety improvements will be made on Buffington Rd. in southern Fulton County.*



**CW-075**

*This bridge on Pylant St. and the nearby intersection with SR 16 in Senoia will be upgraded.*



**FA-351**

*Three roads in Fayette County will be resurfaced, including SR 85C through Brooks.*



**AR-074**

*Signals along several key travel corridors in the area will be upgraded or retimed under a regional GDOT program.*



**CL-267**

*The bridge on Valley Hill Rd. at the Flint River in Clayton County will be replaced.*



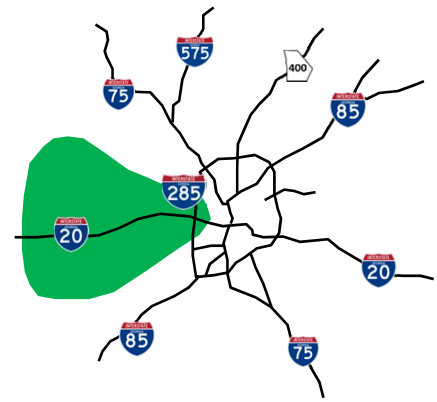
**FA-352**

*This multi-use path linking the Starrs Mill School Complex with nearby neighborhoods in Fayette County will be extended.*

# Final Project Funding Recommendations – West Subregion

- Last Mile Connectivity Program
- General Roadway Operations and Safety Program
- Freight Operations and Safety Program

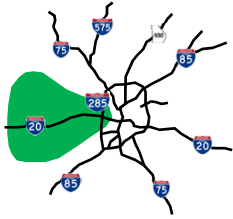
*This fact sheet provides a summary list of final recommendations made in December 2012 by the Atlanta Regional Commission and the Georgia Department of Transportation. More detailed information on scope, schedule and phase costs for each project will be available on fact sheets prepared following incorporation of these projects into the region's Transportation Improvement Program (anticipated to be completed no later than December 21, 2012).*



## RECOMMENDED FOR FULL IMPLEMENTATION FUNDING

Project Number	Project Name	Sponsor	Program	Federal Funds Committed
AR-074A	Prioritized Regionwide Signal Upgrade Program - Phase 1	Georgia DOT	Roadway Ops/Safety	\$ 15,460,000
AR-074B	Prioritized Regionwide Signal Upgrade Program - Phase 2	Georgia DOT	Freight Ops/Safety	\$ 11,600,000
AR-075A	Prioritized Regionwide Signal Retiming Program - Phase 1	Georgia DOT	Roadway Ops/Safety	\$ 5,888,000
AR-075B	Prioritized Regionwide Signal Retiming Program - Phase 2	Georgia DOT	Freight Ops/Safety	\$ 4,000,000
DO-290	SR 5 (Bill Arp Road) from Rose Avenue / Bright Star Connector to Central Church Road - Congestion Reduction and Traffic Flow Improvement Project	Douglas County	Roadway Ops/Safety	\$ 696,000
DO-293	I-20 at SR 5 (Bill Arp Road) and Bright Star Road in City of Douglasville - Interchange Alternatives Analysis	City of Douglasville	Roadway Ops/Safety	\$ 320,000
DO-295	SR 6 (Thornton Road) from I-20 in Douglas County to Garrett Road in Cobb County - Congestion Reduction and Traffic Flow Improvement Project	Douglas County / Cobb County	Freight Ops/Safety	\$ 1,476,000
DO-296	Maxham Road from SR 6 (Thornton Road) to Tree Terrace Parkway in Douglas County - Congestion Reduction and Traffic Flow Improvement Project	Douglas County	Freight Ops/Safety	\$ 1,056,000
DO-297	ITS System Expansion on SR 92 (Fairburn Road), US 78 (Bankhead Street / Broad Street) and Chapel Hill Road in Douglas County - Congestion Reduction and Traffic Flow Improvement Project	Douglas County	Roadway Ops/Safety	\$ 560,000
FS-208*	Stonewall Tell Road at Butner Road in Fulton County - Intersection Improvements / Congestion Reduction and Traffic Flow Improvement Project (includes some funding previously committed for existing project FS-208)	Fulton County	Roadway Ops/Safety	\$ 1,760,000
FS-235	New Hope Road from SR 166 (Campbellton Road) to Versailles Road in Fulton County - Pedestrian Facilities	Fulton County	Last Mile	\$ 1,000,000

\* Project also has earmark funds already programmed in TIP. Federal commitment shown reflects new discretionary funding.

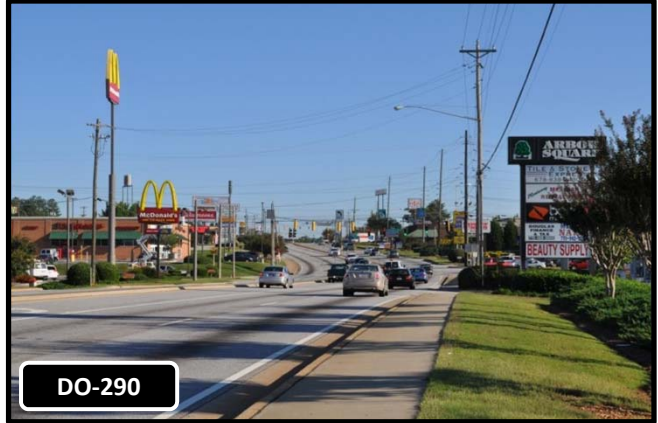


## Sample Projects Recommended for West Subregion

*This fact sheet provides representative examples of projects recommended for funding under three programs by the Atlanta Regional Commission and the Georgia Department of Transportation in December 2012. More detailed information on scope, schedule and phase costs for each project will be available on fact sheets prepared following incorporation of these projects into the region's Transportation Improvement Program (anticipated to be completed no later than December 21, 2012).*



*Sidewalks will be built along New Hope Rd. in southern Fulton County to improve safety and accessibility.*



*Safety and operational improvements will be made on SR 5 in Douglas County*



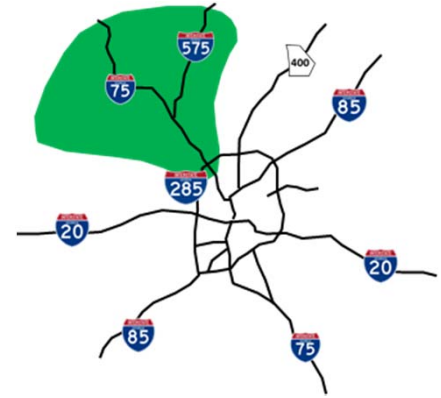
*Signals along several key travel corridors in the area will be upgraded or retimed under a regional GDOT program.*



*Truck operational improvements will be made on SR 6 in Douglas and Cobb Counties.*

# Final Project Funding Recommendations – NW Subregion

- Last Mile Connectivity Program
- General Roadway Operations and Safety Program
- Freight Operations and Safety Program



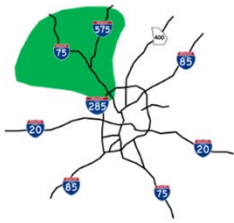
*This fact sheet provides a summary list of final recommendations made in December 2012 by the Atlanta Regional Commission and the Georgia Department of Transportation. More detailed information on scope, schedule and phase costs for each project will be available on fact sheets prepared following incorporation of these projects into the region’s Transportation Improvement Program (anticipated to be completed no later than December 21, 2012).*

## RECOMMENDED FOR FULL IMPLEMENTATION FUNDING

Project Number	Project Name	Sponsor	Program	Federal Funds Committed
AR-074A	Prioritized Regionwide Signal Upgrade Program - Phase 1	Georgia DOT	Roadway Ops/Safety	\$ 15,460,000
AR-074B	Prioritized Regionwide Signal Upgrade Program - Phase 2	Georgia DOT	Freight Ops/Safety	\$ 11,600,000
AR-075A	Prioritized Regionwide Signal Retiming Program - Phase 1	Georgia DOT	Roadway Ops/Safety	\$ 5,888,000
AR-075B	Prioritized Regionwide Signal Retiming Program - Phase 2	Georgia DOT	Freight Ops/Safety	\$ 4,000,000
CL-267	Valley Hill Road at Flint River in Clayton County - Bridge Replacement	Clayton County	Roadway Ops/Safety	\$ 1,600,000
CW-075	SR 16 at Pylant Street and Dead Oak Creek Bridge on Pylant Street in City of Senoia - Intersection Improvements and Bridge Replacement	City of Senoia	Roadway Ops/Safety	\$ 1,600,000
FA-351	Roadway Resurfacing on SR 85 Connector, Brooks Woolsey Road and Ebenezer Road in Fayette County	Fayette County / Town of Brooks	Roadway Ops/Safety	\$ 745,600
FA-352	Redwine Road and Starrs Mill School Complex Multi-Use Path	Fayette County / City of Peachtree City	Last Mile	\$ 858,400
FS-195*	SR 279 (Old National Highway) from Flat Shoals Road to Sullivan Road in Fulton County - Pedestrian Facilities (includes some funding previously committed for existing project FS-195)	Fulton County	Last Mile	\$ 2,832,000
FS-AR-BP087B**	Buffington Road from Royal South Parkway to US 29 (Roosevelt Highway) in Fulton County - Traffic Flow and Pedestrian Improvements (includes some funding previously committed for existing project FS-AR-BP087B)	Fulton County	Freight Ops/Safety	\$ 2,148,610

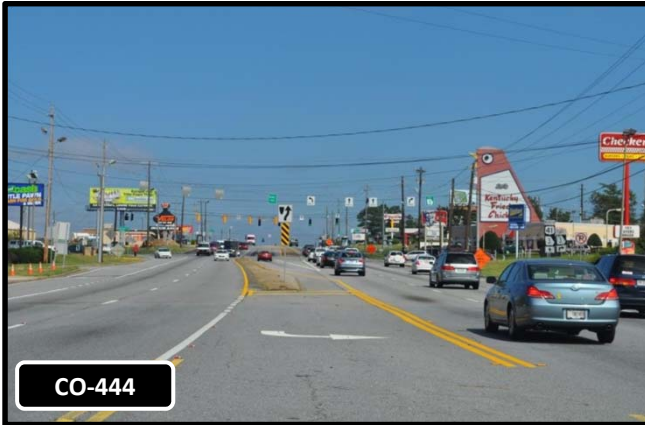
\* Total federal commitment includes \$1,000,000 of existing TIP funds and \$1,832,000 of new funding.

\*\* Total federal commitment includes \$1,728,610 of existing TIP funds and \$420,000 of new funding.



## Sample Projects Recommended for Northwest Subregion

*This fact sheet provides representative examples of projects recommended for funding under three programs by the Atlanta Regional Commission and the Georgia Department of Transportation in December 2012. More detailed information on scope, schedule and phase costs for each project will be available on fact sheets prepared following incorporation of these projects into the region's Transportation Improvement Program (anticipated to be completed no later than December 21, 2012).*



**CO-444**

*Intersection safety and transit access improvements will be made around US 41 and Roswell St. in Roswell.*



**CO-440**

*Five at-grade railroad crossings in Kennesaw will be upgraded.*



**BT-193**

*Geometric improvements will be undertaken on Glade Rd. in Bartow County.*



**CH-227**

*Sidewalk gaps will be eliminated on Canton Road in Woodstock.*



**CO-441**

*Bike lanes and other improvements will be built on Powers Ferry Rd. in the Cumberland area.*



**AR-074**

*Signals along several key travel corridors in the area will be upgraded or retimed under a regional GDOT program.*

**Appendix 1**

**Preliminary List of Corridors and Intersections  
Selected for Prioritized Signal Upgrade Program  
Phase 1 (Project AR-074A)**

*Please note that the information contained in this appendix represents only a preliminary list of corridors and intersections prepared by the GDOT Traffic Operations Division for funding consideration under this program. Some changes in the final locations of improvements to be funded are likely pending the outcome of ongoing review activities by GDOT, ARC and local governments. The latest information on this program will be available on ARC's website once decisions are finalized.*

Appendix 1

Preliminary List of Corridors and Intersections Selected for  
 Prioritized Signal Upgrade Program – Phase 1 (Project AR-074A)\*

**Cherokee County (Northwest Subregion)**

<b># of Intersections:</b>	<b>9</b>
<b>PE Cost:</b>	\$300,000
<b>ROW Cost:</b>	\$350,000
<b>CST Cost:</b>	\$800,000
<b>Total Cost:</b>	\$1,450,000

<b>County</b>	<b>City</b>	<b>Primary Route</b>	<b>Intersecting Road</b>	<b>Reason for Upgrade</b>
<b>Cherokee</b>		SR 20 (Cumming Highway)	E. Cherokee Drive	Obsolete Equipment/ADA
<b>Cherokee</b>		SR 140 (Hickory Flat Highway)	E. Cherokee Drive	Obsolete Equipment/ADA
<b>Cherokee</b>	Woodstock	SR 92 (Alabama Road)	Wiley Bridge Road / Knotts Point Drive	Obsolete Equipment/ADA
<b>Cherokee</b>	Woodstock	SR 92 (Alabama Road)	Weatherstone Drive / S. Cherokee Lane	Obsolete Equipment/ADA
<b>Cherokee</b>	Woodstock	SR 92 (Alabama Road)	Stonecroft Lane / Springfield Drive	Obsolete Equipment/ADA
<b>Cherokee</b>	Woodstock	SR 92 (Alabama Road)	Neese Road	Obsolete Equipment/ADA
<b>Cherokee</b>	Woodstock	SR 92 (Alabama Road)	Parkway 575	Obsolete Equipment
<b>Cherokee</b>	Woodstock	SR 92 (Alabama Road)	Indian Valley Drive	Obsolete Equipment
<b>Cherokee</b>	Woodstock	SR 92 (Alabama Road)	Londonderry Drive	Obsolete Equipment/ADA

\* Subject to change following ongoing review by GDOT, ARC and local governments.

## Appendix 1

### Preliminary List of Corridors and Intersections Selected for Prioritized Signal Upgrade Program – Phase 1 (Project AR-074A)\*

#### Clayton County (Southeast and Southwest Subregions)

<b># of Intersections:</b>	<b>11</b>
<b>PE Cost:</b>	\$350,000
<b>ROW Cost:</b>	\$425,000
<b>CST Cost:</b>	\$975,000
<b>Total Cost:</b>	\$1,750,000

County	City	Primary Route	Intersecting Road	Reason for Upgrade
Clayton		SR 314 (W. Fayetteville Road)	SR 138 (Jonesboro Road)	Obsolete Equipment/ADA
Clayton		SR 314 (W. Fayetteville Road)	Bethsaida Road	Obsolete Equipment/ADA
Clayton		SR 314 (W. Fayetteville Road)	Creel Drive	Obsolete Equipment/ADA
Clayton		SR 314 (W. Fayetteville Road)	Norman Drive	Obsolete Equipment/ADA
Clayton	College Park	SR 314 (W. Fayetteville Road)	Godby Road / Phoenix Boulevard	Obsolete Equipment/ADA
Clayton		US 19/41 (Old Dixie Highway)	Frontage Road / I-75 NB Ramp	Obsolete Equipment/ADA
Clayton		US 19/41 (Old Dixie Highway)	Morrow Road	Obsolete Equipment/ADA
Clayton		US 19/41 (Old Dixie Highway)	Johnson Road	Obsolete Equipment/ADA
Clayton		US 19/41 (Old Dixie Highway)	Southpoint Drive / Conrad Avenue	Obsolete Equipment/ADA
Clayton		US 19/41 (Old Dixie Highway)	I-285 EB Ramps	Obsolete Equipment/ADA
Clayton		US 19/41 (Old Dixie Highway)	I-285 WB Ramps	Obsolete Equipment/ADA

\* Subject to change following ongoing review by GDOT, ARC and local governments.

## Appendix 1

### Preliminary List of Corridors and Intersections Selected for Prioritized Signal Upgrade Program – Phase 1 (Project AR-074A)\*

#### **Fulton County (Southwest Subregion)**

<b># of Intersections:</b>	<b>9</b>
<b>PE Cost:</b>	\$325,000
<b>ROW Cost:</b>	\$450,000
<b>CST Cost:</b>	\$975,000
<b>Total Cost:</b>	\$1,750,000

<b>County</b>	<b>City</b>	<b>Primary Route</b>	<b>Intersecting Road</b>	<b>Reason for Upgrade</b>
<b>Fulton</b>		US 29 (Roosevelt Highway)	Gresham Street	Obsolete Equipment/ADA
<b>Fulton</b>		US 29 (Roosevelt Highway)	Highpoint Road	Obsolete Equipment/ADA
<b>Fulton</b>		SR 6 (Camp Creek Parkway)	SR 70 (Fulton Industrial Boulevard)	Obsolete Equipment/ADA
<b>Fulton</b>		SR 6 (Camp Creek Parkway)	Enon Road	Obsolete Equipment/ADA
<b>Fulton</b>		SR 6 (Camp Creek Parkway)	Merk Road	Obsolete Equipment/ADA
<b>Fulton</b>		SR 6 (Camp Creek Parkway)	Butner Road	Obsolete Equipment/ADA
<b>Fulton</b>		SR 14 Alt (South Fulton Parkway)	Mason Road / Hunter Road	Obsolete Equipment/ADA
<b>Fulton</b>		SR 14 Alt (South Fulton Parkway)	Stonewall Tell Road	Obsolete Equipment/ADA
<b>Fulton</b>		SR 14 Alt (South Fulton Parkway)	SR 92 (Campbellton Fairburn Road)	Obsolete Equipment/ADA

Appendix 1

Preliminary List of Corridors and Intersections Selected for  
Prioritized Signal Upgrade Program – Phase 1 (Project AR-074A)\*

**Barrow County (Northeast Subregion)**

<b># of Intersections:</b>	<b>9</b>
<b>PE Cost:</b>	\$300,000
<b>ROW Cost:</b>	\$400,000
<b>CST Cost:</b>	\$800,000
<b>Total Cost:</b>	\$1,500,000

<b>County</b>	<b>City</b>	<b>Primary Route</b>	<b>Intersecting Road</b>	<b>Reason for Upgrade</b>
<b>Barrow</b>		SR 316 (University Parkway)	Kilcrease Road	Obsolete Equipment/ADA
<b>Barrow</b>		SR 316 (University Parkway)	Patrick Mill Road	Obsolete Equipment/ADA
<b>Barrow</b>		SR 316 (University Parkway)	Carl Bethlehem Road	Obsolete Equipment/ADA
<b>Barrow</b>		SR 211 (Bethlehem Road / Statham Road)	SR 316	Obsolete Equipment/ADA
<b>Barrow</b>		SR 211 (Old Winder Highway)	I-85 NB Ramps	Obsolete Equipment/ADA
<b>Barrow</b>		SR 211 (Old Winder Highway)	I-85 SB Ramps	Obsolete Equipment/ADA
<b>Barrow</b>		SR 211 (Farm Market Road)	Rockwell Church Road / Carl Cedar Hill Road	Obsolete Equipment/ADA
<b>Barrow</b>		SR 81 (Loganville Highway)	Matthews School Road	Obsolete Equipment/ADA
<b>Barrow</b>		SR 53 (Gainesville Highway)	Rockwell Church Road	

\* Subject to change following ongoing review by GDOT, ARC and local governments.

## Appendix 1

### Preliminary List of Corridors and Intersections Selected for Prioritized Signal Upgrade Program – Phase 1 (Project AR-074A)\*

#### Rockdale County (East Subregion)

<b># of Intersections:</b>	<b>9</b>
<b>PE Cost:</b>	\$300,000
<b>ROW Cost:</b>	\$425,000
<b>CST Cost:</b>	\$850,000
<b>Total Cost:</b>	\$1,575,000

<b>County</b>	<b>City</b>	<b>Primary Route</b>	<b>Intersecting Road</b>	<b>Reason for Upgrade</b>
Rockdale		SR 138	Hi Roc Road / Dennard Road	Obsolete Equipment/ADA
Rockdale		SR 138	Centennial Olympic Parkway	Obsolete Equipment/ADA
Rockdale		SR 138	Boar Tusk Road / Lakewood Drive	Obsolete Equipment/ADA
Rockdale		SR 162 (Salem Road)	I-20 WB Ramps	Obsolete Equipment/ADA
Rockdale		SR 162 (Salem Road)	I-20 EB Ramps	Obsolete Equipment/ADA
Rockdale		SR 162 (Salem Road)	Flat Shoals Road	Obsolete Equipment/ADA
Rockdale		Klondike Road	Smyrna Road	Obsolete Equipment/ADA
Rockdale		Smyrna Road	Ebenezer Road	Obsolete Equipment/ADA
Rockdale		Flat Shoals Road	Avalon Boulevard / West Iris Drive	Obsolete Equipment/ADA

\* Subject to change following ongoing review by GDOT, ARC and local governments.

## Appendix 1

### Preliminary List of Corridors and Intersections Selected for Prioritized Signal Upgrade Program – Phase 1 (Project AR-074A)\*

#### Walton County (East Subregion)

<b># of Intersections:</b>	<b>14</b>
<b>PE Cost:</b>	\$500,000
<b>ROW Cost:</b>	\$750,000
<b>CST Cost:</b>	\$1,350,000
<b>Total Cost:</b>	\$2,600,000

County	City	Primary Route	Intersecting Road	Reason for Upgrade
Walton	Monroe	SR 10 Business (W. Spring Street)	SR 138 (Martin Luther King, Jr. Boulevard)	Obsolete Equipment/ADA
Walton	Loganville	US 78 (Atlanta Highway)	SR 81 (Lawrenceville Highway)	Obsolete Equipment/ADA
Walton		US 78 (Atlanta Highway)	Bay Creek Church Road / Broadnax Mill Road	Obsolete Equipment/ADA
Walton	Monroe	US 78 (Atlanta Highway)	SR 83 (James Huff Road)	Obsolete Equipment/ADA
Walton	Loganville	US 78 (Atlanta Highway)	Tom Brewer Road / Trident Trail	Obsolete Equipment/ADA
Walton	Monroe	SR 10 Business (W. Spring Street)	Carwood Drive	Obsolete Equipment/ADA
Walton	Loganville	US 78 (Atlanta Highway)	SR 20 (Main Street)	Obsolete Equipment/ADA
Walton		SR 138	Youth Jersey Road	Obsolete Equipment/ADA
Walton		SR 20 (Loganville Highway)	Miller Bottom Road	Obsolete Equipment/ADA
Walton		SR 81	Youth Jersey Road	Obsolete Equipment/ADA
Walton		SR 138	H.D. Atha Road	Obsolete Equipment/ADA
Walton	Loganville	SR 20 (Loganville Highway)	SR 81 (Winder Road / C.S. Floyd Road)	Obsolete Equipment/ADA
Walton	Loganville	SR 20 (Main Street)	SR 81 (Loganville Highway)	Obsolete Equipment/ADA
Walton	Monroe	SR 11 (N. Broad Street)	E. Marable Street	Obsolete Equipment/ADA

\* Subject to change following ongoing review by GDOT, ARC and local governments.

## Appendix 1

### Preliminary List of Corridors and Intersections Selected for Prioritized Signal Upgrade Program – Phase 1 (Project AR-074A)\*

#### Forsyth County (North Subregion)

<b># of Intersections:</b>	<b>10</b>
<b>PE Cost:</b>	\$300,000
<b>ROW Cost:</b>	\$375,000
<b>CST Cost:</b>	\$875,000
<b>Total Cost:</b>	\$1,550,000

County	City	Primary Route	Intersecting Road	Reason for Upgrade
Forsyth		US 19 / SR 400	SR 369 (Browns Bridge Road)	Obsolete Equipment/ADA
Forsyth		US 19 / SR 400	Martin Road	Obsolete Equipment/ADA
Forsyth		US 19 / SR 400 NB Ramps	Bald Ridge Marina Road	Obsolete Equipment/ADA
Forsyth	Cumming	US 19 / SR 400 SB Ramps	Bald Ridge Marina Road	Obsolete Equipment/ADA
Forsyth		US 19 / SR 400	Jot Em Down Road	Obsolete Equipment/ADA
Forsyth		SR 9 (Dahlonega Highway)	SR 369 (Matt Highway / Browns Bridge Road)	Obsolete Equipment/ADA
Forsyth		SR 9 (Atlanta Highway)	SR 20 (Buford Highway)	Obsolete Equipment/ADA
Forsyth	Cumming	SR 9 (Atlanta Highway)	Buford Dam Road	Obsolete Equipment/ADA
Forsyth	Cumming	SR 9 (Dahlonega Street)	SR 306 (Sawnee Drive)	Obsolete Equipment/ADA
Forsyth		SR 9 (Atlanta Highway)	SR 141 (Peachtree Parkway)	Obsolete Equipment/ADA

\* Subject to change following ongoing review by GDOT, ARC and local governments.

Appendix 1

Preliminary List of Corridors and Intersections Selected for  
 Prioritized Signal Upgrade Program – Phase 1 (Project AR-074A)\*

**Forsyth County – North Subregion**

<b># of Intersections:</b>	<b>10</b>
<b>PE Cost:</b>	\$300,000
<b>ROW Cost:</b>	\$375,000
<b>CST Cost:</b>	\$875,000
<b>Total Cost:</b>	\$1,550,000

<b>County</b>	<b>City</b>	<b>Primary Route</b>	<b>Intersecting Road</b>	<b>Reason for Upgrade</b>
<b>Forsyth</b>		SR 9 (Dahlonega Highway)	SR 306 (Keith Bridge Road)	Obsolete Equipment/ADA
<b>Forsyth</b>		SR 9 (Atlanta Highway)	Hutchinson Road	Obsolete Equipment/ADA
<b>Forsyth</b>		SR 20 (Canton Highway)	Bethelview Road	Obsolete Equipment/ADA
<b>Forsyth</b>		SR 20 (Canton Highway)	Dr. Bramblett Road	Obsolete Equipment/ADA
<b>Forsyth</b>		SR 20 (Canton Highway)	Spot Road Connector	Obsolete Equipment/ADA
<b>Forsyth</b>	Cumming	SR 20 (Canton Highway)	SR 306 (Sawnee Drive)	Obsolete Equipment/ADA
<b>Forsyth</b>		SR 306 (Keith Bridge Road)	Jot Em Down Road	Obsolete Equipment/ADA
<b>Forsyth</b>		SR 369 (Matt Highway)	Bannister Road / John Burruss Road	Obsolete Equipment/ADA
<b>Forsyth</b>		SR 369 (Browns Bridge Road)	Little Mill Road	Obsolete Equipment/ADA
<b>Forsyth</b>		SR 371 (Post Road)	Kelly Mill Road / Drew Campground Road	Obsolete Equipment/ADA

\* Subject to change following ongoing review by GDOT, ARC and local governments.

## Appendix 1

### Preliminary List of Corridors and Intersections Selected for Prioritized Signal Upgrade Program – Phase 1 (Project AR-074A)\*

#### Fulton County / City of East Point (Central Subregion)

<b># of Intersections:</b>	<b>17</b>
<b>PE Cost:</b>	\$500,000
<b>ROW Cost:</b>	\$775,000
<b>CST Cost:</b>	\$1,525,000
<b>Total Cost:</b>	\$2,800,000

County	City	Primary Route	Intersecting Road	Reason for Upgrade
<b>Fulton</b>	East Point	I-85 SB Ramps	Virginia Avenue	Obsolete Equipment/ADA
<b>Fulton</b>	East Point	US 29 (Main Street)	Willingham Drive	Obsolete Equipment/ADA
<b>Fulton</b>	East Point	US 29 (Main Street)	W. Hamilton Avenue / Legion Way	Obsolete Equipment/ADA
<b>Fulton</b>	East Point	US 29 NB (Main Street)	Irene Kidd Parkway	Obsolete Equipment/ADA
<b>Fulton</b>	East Point	US 29 NB (Main Street)	W. Cleveland Ave	Obsolete Equipment/ADA
<b>Fulton</b>	East Point	US 29 (Main Street)	Connally Drive	Obsolete Equipment/ADA
<b>Fulton</b>	East Point	US 29 (Main Street)	Harold Sheats Parkway	Obsolete Equipment/ADA
<b>Fulton</b>	East Point	US 29 (Main Street)	Knotts Avenue	Obsolete Equipment/ADA
<b>Fulton</b>	East Point	US 29 (Main Street)	Womack Avenue	Obsolete Equipment/ADA
<b>Fulton</b>	East Point	SR 166 WB Ramps (Langford Parkway)	Womack Avenue	Obsolete Equipment/ADA
<b>Fulton</b>	East Point	US 29 SB (East Point Street)	W. Forrest Avenue	Obsolete Equipment/ADA
<b>Fulton</b>	East Point	US 29 SB (East Point Street)	W. Cleveland Ave	Obsolete Equipment/ADA
<b>Fulton</b>	East Point	US 29 SB (East Point Street)	Thompson Avenue	Obsolete Equipment/ADA
<b>Fulton</b>	East Point	US 29 SB (East Point Street)	E. Washington Road / Legion Way	Obsolete Equipment/ADA
<b>Fulton</b>	East Point	SR 166 WB Ramp (Langford Parkway) / Alison Court	Stanton Road	Obsolete Equipment/ADA
<b>Fulton</b>	East Point	Delowe Stanton Access Road / E. Woodberry Avenue	Stanton Road	Obsolete Equipment/ADA
<b>Fulton</b>	East Point	SR 166 EB Ramp (Langford Parkway) / Delowe Stanton Access Road	Delowe Drive	Obsolete Equipment/ADA

\* Subject to change following ongoing review by GDOT, ARC and local governments.

Appendix 1

Preliminary List of Corridors and Intersections Selected for  
Prioritized Signal Upgrade Program – Phase 1 (Project AR-074A)\*

**Rockdale County / City of Conyers – East Subregion**

<b># of Intersections:</b>	<b>10</b>
<b>PE Cost:</b>	\$325,000
<b>ROW Cost:</b>	\$525,000
<b>CST Cost:</b>	\$1,050,000
<b>Total Cost:</b>	\$1,900,000

<b>County</b>	<b>City</b>	<b>Primary Route</b>	<b>Intersecting Road</b>	<b>Reason for Upgrade</b>
<b>Rockdale</b>	Conyers	West Avenue	Green Street	Obsolete Equipment/ADA
<b>Rockdale</b>	Conyers	Rockbridge Road	Sigman Road	Obsolete Equipment/ADA
<b>Rockdale</b>	Conyers	Klondike Road	Johnson Road	Obsolete Equipment/ADA
<b>Rockdale</b>	Conyers	Main Street	Milstead Avenue	Obsolete Equipment/ADA
<b>Rockdale</b>	Conyers	Centennial Olympic Parkway	Costley Mill Road	Obsolete Equipment/ADA
<b>Rockdale</b>	Conyers	Center Street / Travis Street	Green Street	Obsolete Equipment/ADA
<b>Rockdale</b>	Conyers	Oakland Lane / Huff Street	Oakland Avenue / Parker Road	Obsolete Equipment/ADA
<b>Rockdale</b>	Conyers	Dogwood Drive (I-20 Frontage Road)	Home Depot Driveway	Obsolete Equipment/ADA
<b>Rockdale</b>	Conyers	I-20 EB Ramps	Klondike Road / West Avenue	Obsolete Equipment/ADA
<b>Rockdale</b>	Conyers	I-20 WB Ramps	West Avenue / Klondike Road	Obsolete Equipment/ADA

\* Subject to change following ongoing review by GDOT, ARC and local governments.

Appendix 2

Preliminary List of Corridors  
Selected for Prioritized Signal Retiming Program  
Phase 1 (Project AR-075A)

*Please note that the information contained in this appendix represents only a preliminary list of corridors prepared by the GDOT Traffic Operations Division for funding consideration under this program. Some changes in the final locations of improvements to be funded are likely pending the outcome of ongoing review activities by GDOT, ARC and local governments. The latest information on this program will be available on ARC's website once decisions are finalized.*

## Appendix 2

### Preliminary List of Corridors Selected for Prioritized Signal Retiming Program - Phase 1 (Project AR-075A)\*

Corridor	Number of Intersections	County	Start	End
State Bridge Road	14	Fulton	State Bridge Way	SR 141 (Medlock Bridge Road)
SR 20	33	Gwinnett/Forsyth	SR 9 (Atlanta Road)	Mall of Georgia Boulevard
SR 120	40	Fulton/Gwinnett	SR 9 (Alpharetta Highway)	I-85 NB
SR 120 (Dallas Highway / Whitlock Avenue)	26	Cobb	Due West Road	SR 5 (South Marietta Parkway)
Old Alabama Road	19	Fulton	Riverside Road	SR 141 (Medlock Bridge Road)
N. Druid Hills Road	21	Dekalb	SR 141 (Peachtree Road)	US 78 (Stone Mountain Highway)
Jimmy Carter Boulevard / Mountain Industrial Boulevard	27	Gwinnett/Dekalb	US 78 (Stone Mountain Highway)	I-85 SB
US 23 (Buford Highway)	20	Dekalb/Gwinnett	Motors Industrial Way	Pleasant Hill Road
Barrett Parkway	19	Cobb	SR 120 (Dallas Highway)	I-75 NB
Johnson Ferry Road	20	Cobb/Fulton	Shallowford Road	Brandon Mill Road
McGinnis Ferry Road	22	Fulton / Gwinnett	Windward Concourse	Peachtree Industrial Boulevard
US 29 (Lawrenceville Highway)	20	Gwinnett / DeKalb	Montreal Road East	SR 20 (Jackson Street)
Airport Loop Road	11	Fulton	Toffie Terrace	Lake Mirror Drive
SR 155 (Clairmont Road)	18	DeKalb	Ponce de Leon Avenue	I-85 SB
Spalding Road	13	Gwinnett	Dunwoody Club Drive	South Berkeley Lake Road
Peachtree Ind Boulevard	27	Gwinnett	Holcomb Bridge Road	SR 20 (Buford Drive)
SR 139 (Martin Luther King, Jr. Drive)	9	Fulton	SR 70 (Fulton Industrial Boulevard)	Boulder Park Drive
SR 120 (N&S Loop)	42	Cobb/Fulton	SR 5 (South Marietta Parkway)	SR 9 (Atlanta Road)
SR 360 (Powder Springs Road)	41	Cobb	SR 6 (CH James Parkway)	SR 5 (South Marietta Parkway)
SR 5 (Austell Road)	24	Cobb	SR 6 (Thornton Road)	Atlanta St
West Paces Ferry Road	3	Fulton	I-75 SB	Moore's Mill Road
Ashford Dunwoody Road	10	DeKalb	I-285 WB	Donaldson Drive
SR 316	6	Gwinnett	Collins Hill Road	US 29 (Winder Highway)
Jiles Road	11	Cobb	US 41 (Cobb Parkway)	I-75 NB
Canton Highway	14	Cobb	SR 120 (North Marietta Parkway)	SR 92 (Alabama Road)
Jones Bridge Road	12	Fulton/DeKalb	SR 140 (Holcomb Bridge Road)	SR 141 (Peachtree Parkway)
SR 155 (Clairmont Avenue)	19	DeKalb	I-285 EB	US 278 (College Avenue)
SR 42 (Briarcliff Road)	13	Fulton / DeKalb	US 23/29/278 (Ponce de Leon Avenue)	North Druid Hills Road
US 78	17	Gwinnett	E Park Place Boulevard	SR 124 (Scenic Highway)
Oakdale Road	8	Cobb	Six Flags Parkway	Highlands Parkway
SR 85	30	Clayton / Fayette	SR 54 (Stonewall Avenue)	SR 331 (Forrest Parkway)
N Deshong Road / Rockbridge Road	7	Gwinnett	US 78 (Stone Mountain Highway)	Rockbridge Road
US 29 (Lawrenceville Highway)	37	Gwinnett	I-285	Ronald Reagan Parkway
SR 92	31	Fulton/Cherokee	I-575	SR 9 (Alpharetta Highway)
SR 5 (Austell Road)	3	Cobb	Cochran Road.	SR 280 (S. Cobb Drive)
US 41 (Northside Drive)	24	Fulton	I-20	I-75
SR 9 (Alpharetta Highway)	17	Fulton	Canton St.	Mayfield Road.
SR 237 (Piedmont Road)	17	Fulton	Rock Spring Road.	SR 9 (Roswell Road)
McEver Road	4	Gwinnett	South Waterworks Road.	Jim Crow Road.
SR 155 (Candler Road) - NB	16	DeKalb	I-285	SR 154 (Memorial Drive)
Callaway Road - SB	3	Cobb	SR 5 (Austell Road)	SR 360 (Powder Springs Road)
Abernathy Road	15	Fulton/DeKalb	Johnson Ferry Road	Ashford Dunwoody Road
US 41 (Cobb Parkway)	21	Cobb	Barrett Parkway	Cedarcrest Road
Johnson Ferry Road	26	Cobb	SR 120 (Roswell Road)	Oak Forest Drive
Riverside Drive	6	Fulton	Mt Vernon Highway	Rivervalley Road
Hardscrabble Road	4	Fulton	SR 92	Crabapple Road
SR 6 (Camp Creek Parkway)	17	Douglas/Fulton	I-85	I-20
SR 211	9	Barrow	I-85	SR 11
Windy Hill Road	13	Cobb	Atlanta Road	Powers Ferry Road

\* Subject to change following ongoing review by GDOT, ARC and local governments.

## Appendix 2

### Preliminary List of Corridors Selected for Prioritized Signal Retiming Program - Phase 1 (Project AR-075A)\*

Corridor	Number of Intersections	County	Start	End
Bells Ferry Road	7	Cobb	I-75 NB	SR 92 (Alabama Road)
SR 5 (Austell Road)	17	Cobb	SR 6 (Thorton Road)	County Services Parkway
US 278 (Covington Highway)	18	DeKalb	Klondike Road	I-285 SB
GA 176 (Mars Hill Road)	18	Cobb	US 41 (Cobb Parkway)	Milton Avenue
US 23 (Buford Highway)	20	Gwinnett	Pleasant Hill Road	I-285 EB
SR 124 (Scenic Highway)	21	Gwinnett	Henry Clower Boulevard	US 29 (Crogan St)
Sugarloaf Parkway	15	Gwinnett	Lakes Parkway	SR 20 (Grayson Highway)
Crabapple Road	8	Fulton	Magnolia St	SR 140 (Houze Road)
Atlanta Road	28	Cobb	SR 120 Loop (South Marietta Parkway)	I-285 NB
US 23 (Moreland Avenue) / SR 42 (Briarcliff Road)	15	Fulton	Freedom Parkway	N Druid Hills Road
Spring St	16	Fulton	Peachtree St NE	Linden Avenue
US 78/278 (Hollowell Parkway)	13	Fulton	I-285 NB	US 41 (Northside Drive)
SR 236 (Lavista Road)	27	Dekalb	SR 237 (Piedmont Road)	US 29 (Lawrenceville Highway)
SR 6 (Camp Creek Parkway)	9	Fulton	I-285 NB	Convention Center Concourse
Rucker Road	9	Fulton	Crabapple Road	SR 400 NB
SR 360 (Macland Road)	10	Cobb	SR 120 (Dallas Highway)	Powder Springs Road
US 78 (Bankhead Highway)	12	Douglas	Rose Avenue	SR 5 (Austell Road)
Old Atlanta Road	7	Forsyth	SR 141 (Peachtree Parkway)	Laurel Springs Parkway
SR 154 (Memorial Drive)	26	DeKalb	US 23 (Moreland Avenue)	George Luther Drive
Shallowford Road	16	Cobb	Blackwell Road	Childers Road
SR 141 (Peachtree Parkway)	18	Forsyth	SR 9 (Atlanta Highway)	SR 120 (Abbotts Bridge Road)
Johnson Ferry Road	16	Fulton / DeKalb	Abernathy Road	SR 141 (Peachtree Industrial Boulevard)
Ashford Dunwoody Road	12	DeKalb	I-285 EB	Mt Vernon Road
US 29/78/278 (North Avenuenue / Ponce de Leon Avenue)	18	Fulton	Techwood Drive	Oakdale Road
Juniper St / Courtland St	29	Fulton	SR 154 (Memorial Drive)	14th Street
Sandy Plains Road	22	Cobb	Canton Road Conn	SR 92 (Alabama Road)
SR 162 (Salem Road)	5	Rockdale	I-20 WB	McCallia Road
West Peachtree St	22	Fulton	Ivan Allen Jr. Boulevard	Peachtree St
Chamblee Dunwoody Road	15	DeKalb	Mt. Vernon Road	US 23 (Buford Highway)
US 29 (Lee St)	15	Fulton	Knotts Avenue	Oak St
US 41 (Northside Drive)	22	Fulton	W Whitehall St SW	I-75 NB
SR 907	22	DeKalb	Ptree Industrial Road	Northcrest Road
W Lake Avenue	6	Fulton	US 78 (Hollowell Parkway)	SR 139 (Ralph David Abernathy Boulevard)

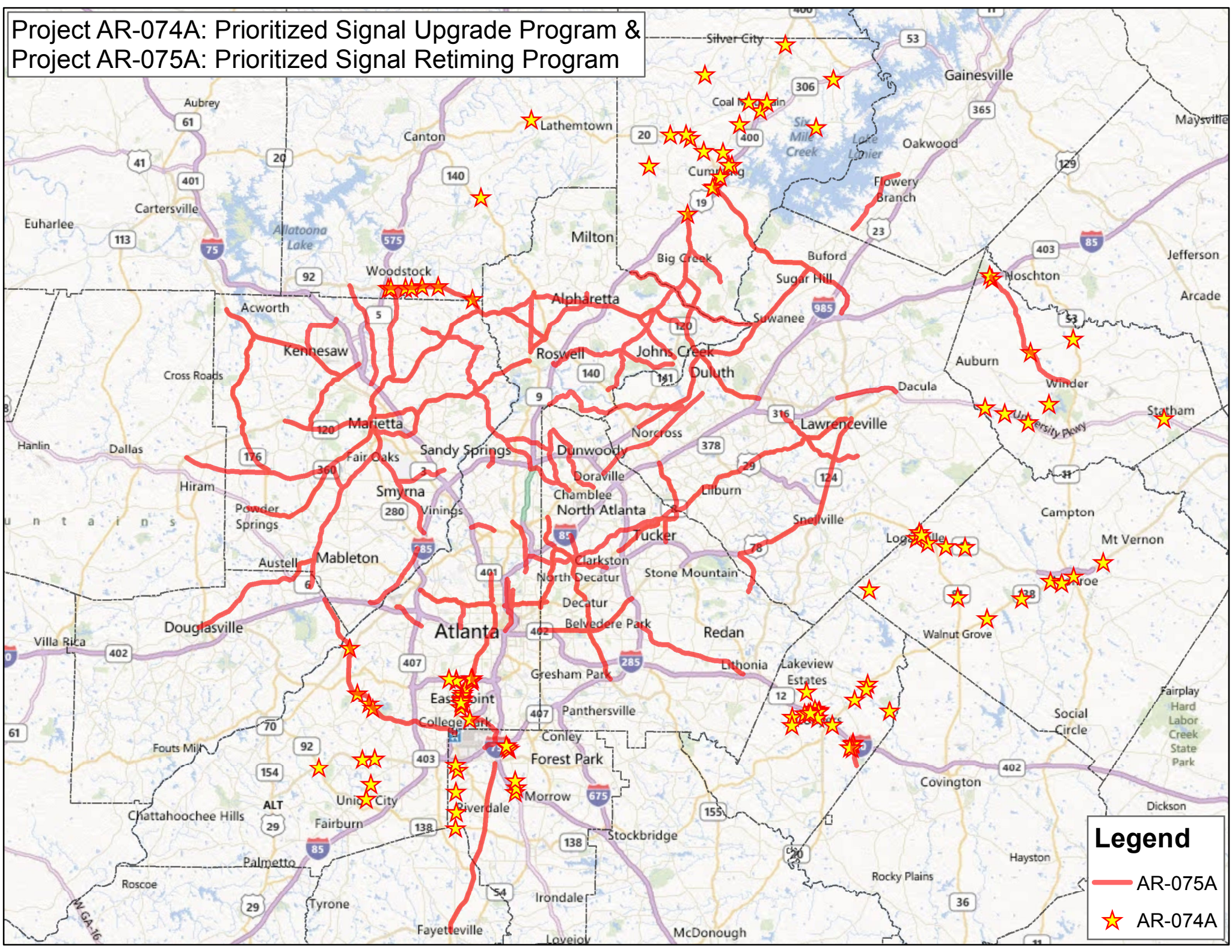
\* Subject to change following ongoing review by GDOT, ARC and local governments.

### Appendix 3

## Map of Corridors and Intersections Initially Recommended for Projects AR-074A and AR-075A

*Please note that the information contained in this appendix represents only a preliminary list of corridors and intersections prepared by the GDOT Traffic Operations Division for funding consideration under these two programs. Some changes in the final locations of improvements to be funded are likely pending the outcome of ongoing review activities by GDOT, ARC and local governments. The latest information on these programs will be available on ARC's website once decisions are finalized.*

# Project AR-074A: Prioritized Signal Upgrade Program & Project AR-075A: Prioritized Signal Retiming Program



**Legend**

- AR-075A
- ★ AR-074A