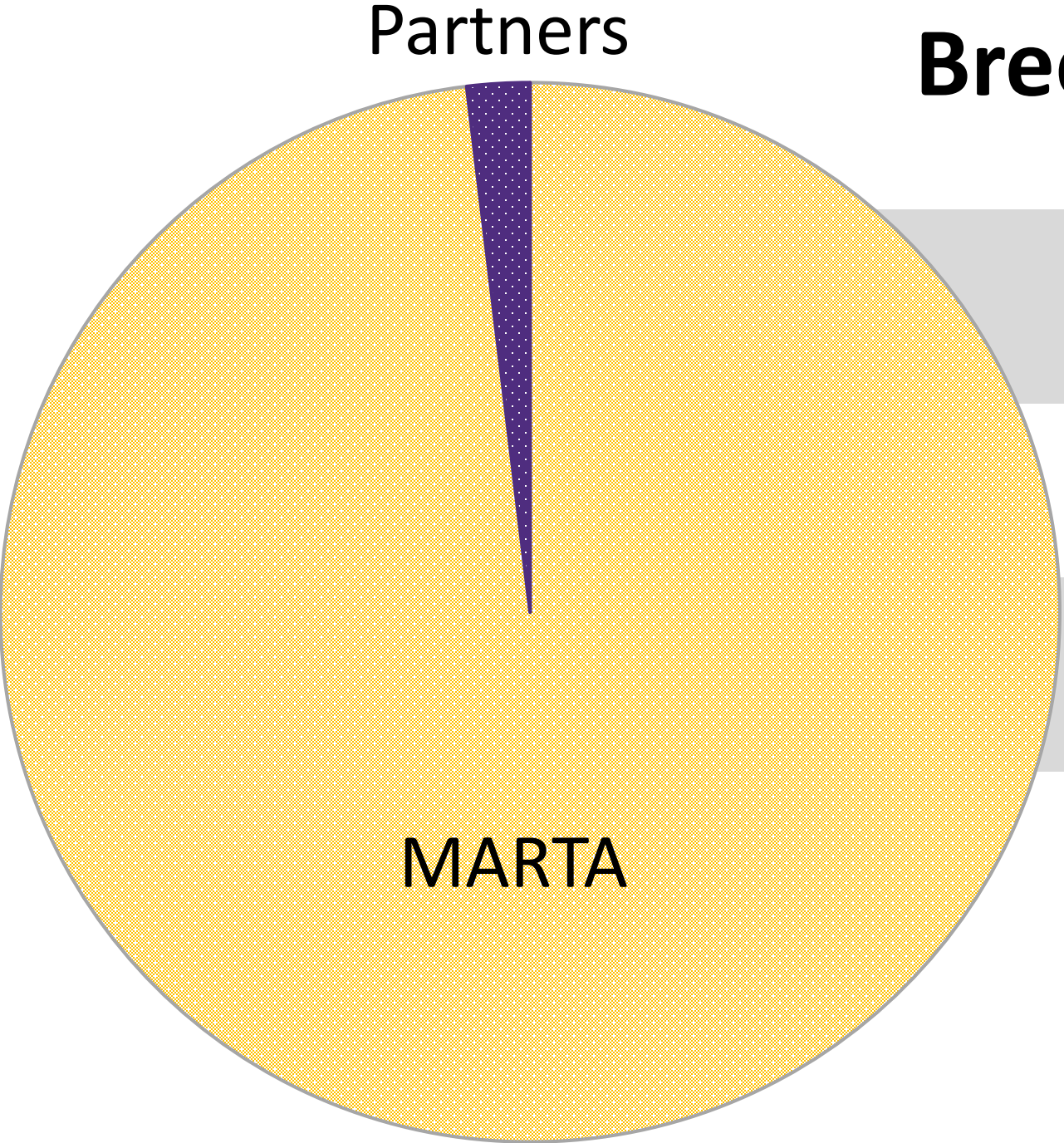
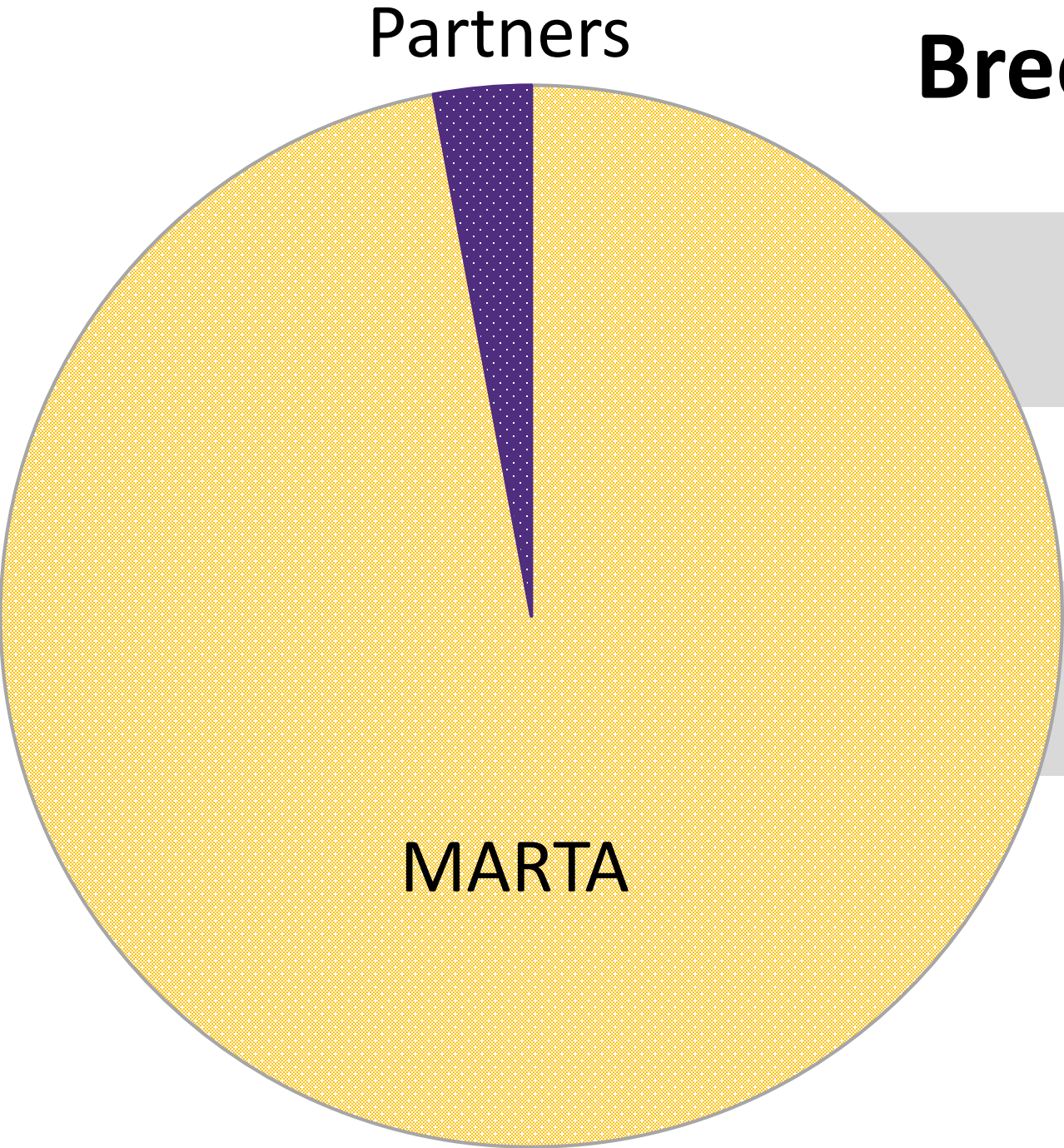


# Breeze Revenue 2014



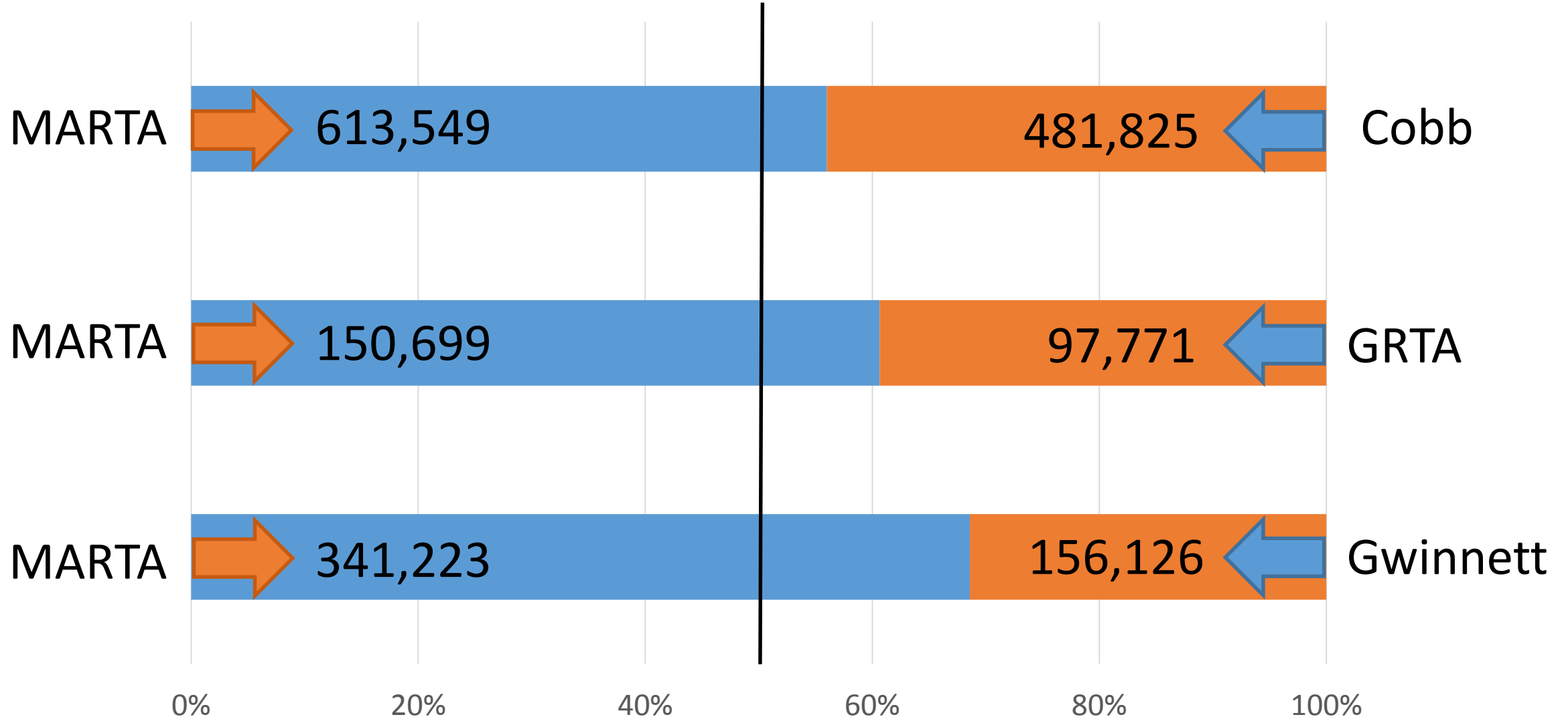
|          |               |       |
|----------|---------------|-------|
| MARTA    | \$139,803,185 | 98.1% |
| Cobb     | \$960,053     | 0.7%  |
| GRTA     | \$449,230     | 0.3%  |
| Gwinnett | \$1,315,354   | 0.9%  |

# Breeze Ridership 2014

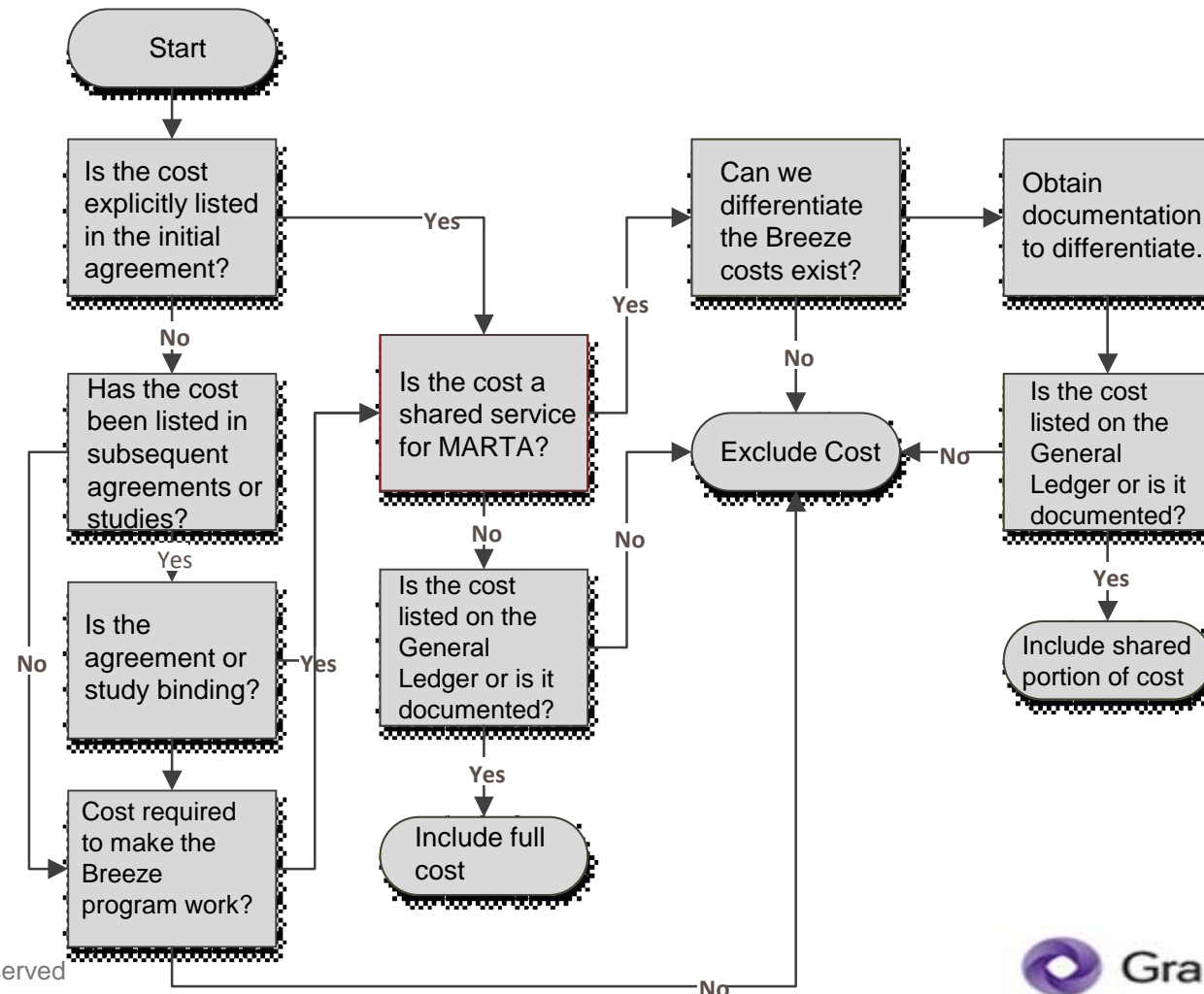


|          |             |       |          |
|----------|-------------|-------|----------|
|          |             |       | Partners |
| MARTA    | 102,346,988 | 97.0% |          |
| Cobb     | 2,039,379   | 1.9%  |          |
| GRTA     | 314,869     | 0.3%  |          |
| Gwinnett | 759,195     | 0.7%  |          |

# Reciprocal Fare Transfers 2014



# Decision Flow for In-scope Breeze Costs



# Clearinghouse Activities

