



atltransit update

Regional Transit Committee

November 12, 2015

Landon Reed



Welcome to the ATLtransit Pilot Project, a joint effort of metro Atlanta's transit agencies to provide a hub for information on how transit works together to connect the region.

About

ATLtransit is a joint pilot project of the major transit agencies in metro Atlanta, who are working together to provide a unified resource for customers of transit in the region.

[Learn More »](#)

How It Works

Plan a trip anywhere in the region using the ATLtransit Open Trip Planner, find resources for buying passes, and learn what you need to do if you want to transfer among systems.

[Learn More »](#)

Give Us Feedback

We need your feedback to make ATLtransit a valuable resource for the millions of people who use transit in metro Atlanta every year. So tell us what you think.

[Learn More »](#)



i Click to view recent status updates.

Plan trip Next arrival Stop ID

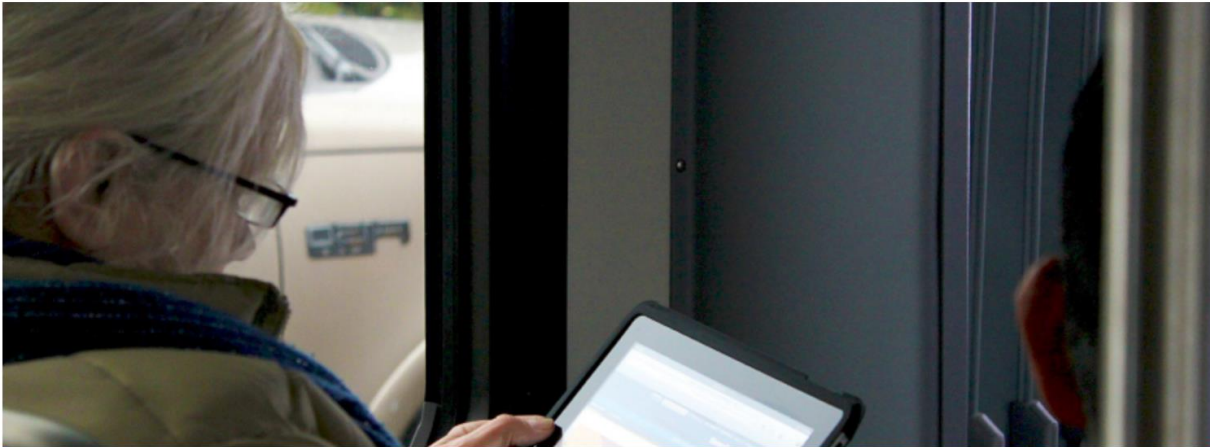
Enter starting address, or click on the map...

Enter destination...

⌚ Leave now ▾ ATLtransit ▾

Plan my trip More options ▶

- 90 Elizabeth St NE to 40 Courtland... >
- Georgia Dome to Midtown, Atlanta... >



COMMUTE TIME IS YOUR TIME

Use your ride to catch up on news, emails, or just your morning coffee.

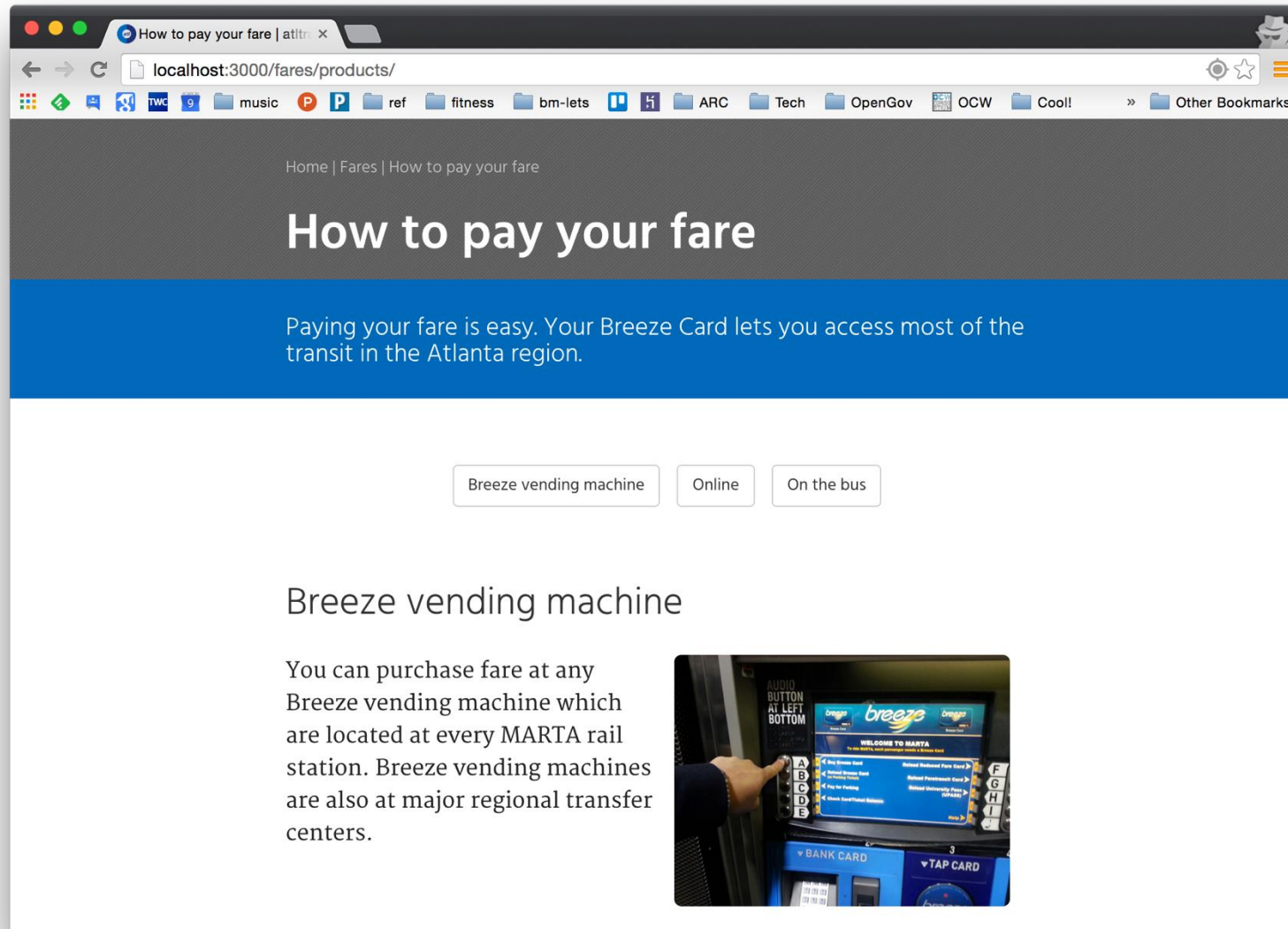
○ ● ○ ○ ○ ○

Major improvements

- Real-time arrivals and schedules information
- Simplified fare/transfers information
- Trip planner
 - Address location (geocoding)
 - User interface
- Content management system (CMS)
- User experience improvements
- Better content organization
- Linked with unified bus stop signage



Simplified fare/transfers information



Home | Fares | How to pay your fare


How to pay your fare

Paying your fare is easy. Your Breeze Card lets you access most of the transit in the Atlanta region.

[Breeze vending machine](#) [Online](#) [On the bus](#)

Breeze vending machine

You can purchase fare at any Breeze vending machine which are located at every MARTA rail station. Breeze vending machines are also at major regional transfer centers.



Real-time arrivals + schedule info

Stop-specific real-time arrivals

Choose an agency, route, and stop to view real-time arrival information.

Back

Peachtree Center

[↻ 12:53 pm](#)

↻

Route	Minutes	Direction
GOLD	NOW ⚡	Airport ✈️
GOLD	NOW ⚡	Doraville
RED	3 ⚡	North Springs
RED	3 ⚡	Airport ✈️
GOLD	9 ⚡	Airport ✈️
GOLD	9 ⚡	Doraville

Stop-specific schedules

Choose an agency, route, and stop to view schedules by date.

[View hours of operations for transit agencies >>](#)

Back

Peachtree Center

📅 11-10-2015

GOLD - Doraville

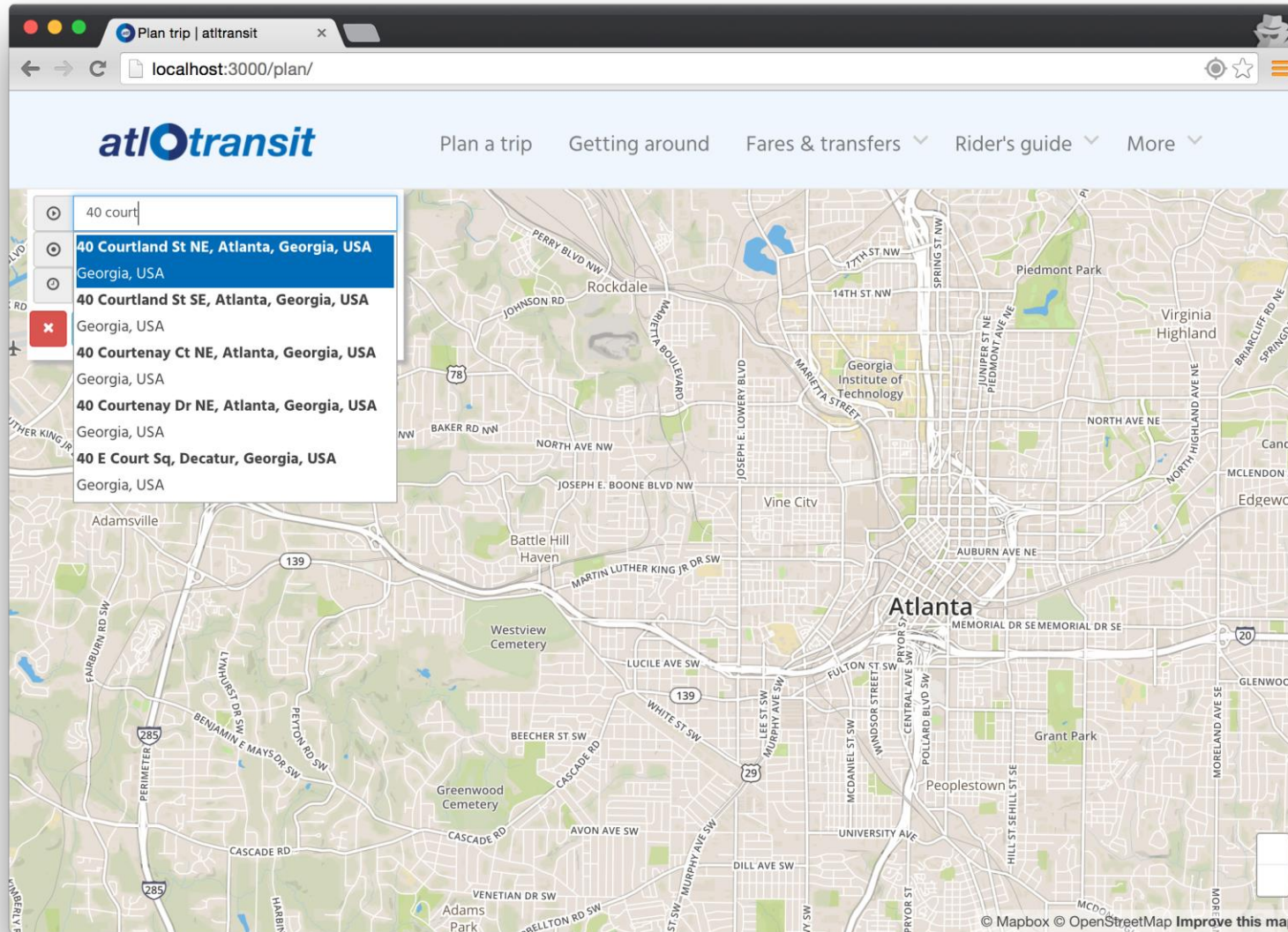
	Hour	Minute
AM 5:	3	23 43
6:	3	19 30 39 49 59
7:	9	19 29 39 49 59
8:	9	19 29 39 49 59
9:	9	19 29 41 53
10:	5	17 29 41 53
11:	5	17 29 41 53

GOLD - Airport

	Hour	Minute
AM 5:	7	27 47
6:	6	26 36 46 56
7:	6	16 26 36 46 56
8:	6	16 26 36 47 57
9:	7	17 30 41 53
10:	5	17 29 41 53
11:	5	17 29 41 53



Trip Planner: Improved geocoding + UI



Linked with unified bus stop signage

STOP NO.
103134



 Use your phone to get info on next arrivals.

 Call (770) 999-9663

 Text "atlbus 103134" to 41411

 Install OneBusAway app for Android/iOS

 Visit atlb.us/#/103134

Website re-launch

- Q1 2016
- Coordinating with regional transit marketing project
- Next steps:
 - Refine content/design
 - Branding/logo work



Demo

- <http://test.atlb.us>



Questions?

Landon Reed

lreed@atlantaregional.com

404 245 0597

