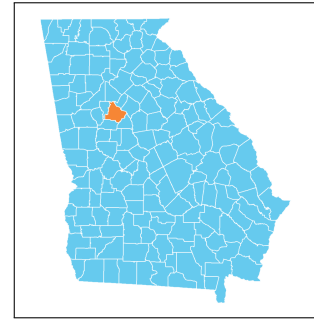


Henry County, Georgia Early Childhood Profile

The Georgia Early Childhood Profiles are produced by GEEARS: Georgia Early Education Alliance for Ready Students, with technical assistance from Neighborhood Nexus. GEEARS is a nonpartisan, nonprofit organization whose mission is support high-quality early learning and healthy development for Georgia's youngest children, from birth to five, by championing policies, promoting innovative and evidence-based practices, and building public will. These profiles highlight indicators relevant to early childhood and school readiness. To learn more, please visit www.geears.org.



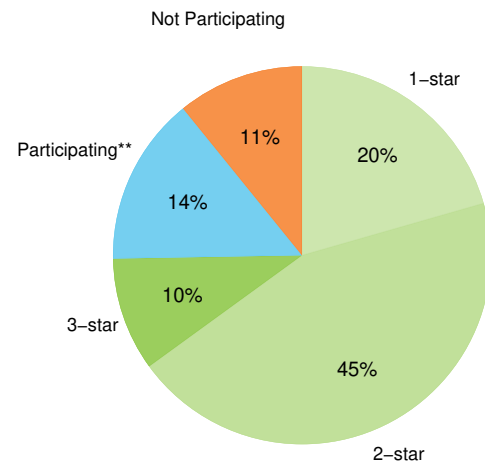
Early Care and Education Providers

	County	State
Total Early Learning Providers¹	96	4,912
Child Care Learning Centers	62	2,848
<i>Licensed to serve infants</i>	95%	85%
<i>Licensed to serve toddlers</i>	100%	92%
<i>Licensed to serve preschoolers</i>	100%	100%
Family Child Care Learning Homes	21	1,088
<i>Licensed to serve infants</i>	81%	85%
<i>Licensed to serve toddlers</i>	95%	97%
<i>Licensed to serve preschoolers</i>	100%	97%
Other Providers [†]	13	976
Total Licensed Capacity^{*1}	9,849	344,062
Quality Rated: [#]	83%	74%
Child Care Learning Centers	9,723	337,574
Quality Rated: [#]	83%	75%
<i>1-star programs</i>	32%	15%
<i>2-star programs</i>	47%	48%
<i>3-star programs</i>	5%	11%
Family Child Care Learning Homes	126	6,488
Quality Rated: [#]	48%	47%
<i>1-star programs</i>	0%	5%
<i>2-star programs</i>	29%	29%
<i>3-star programs</i>	19%	13%

Third Grade Assessment Results

	County	State
Students Tested, ELA⁴	2,855	123,635
Proficient/Distinguished Learners:	26%	39%
<i>White</i>	33%	52%
<i>Black or African-American</i>	24%	27%
<i>Hispanic or Latino</i>	25%	27%
<i>Limited English Proficiency</i>	9%	16%
<i>Economically Disadvantaged</i>	22%	29%
Students Tested, Math⁴	2,855	123,534
Proficient/Distinguished Learners:	29%	46%
<i>White</i>	39%	61%
<i>Black or African-American</i>	25%	30%
<i>Hispanic or Latino</i>	29%	35%
<i>Limited English Proficiency</i>	17%	27%
<i>Economically Disadvantaged</i>	25%	35%

Quality Rated Licensed Early Learning Providers¹



Program Enrollment

	County	State
Kindergarten ²	2,575	117,758
Head Start and Early Head Start ³	58	20,825

[†]The "Other Providers" category represents entities not subject to licensing by The Georgia Department of Early Care and Learning (DECAL) such as local school systems. Only providers known to DECAL are included.

[#]Quality Rated is Georgia's Quality Rating and Improvement System for child care and early learning programs. For more information, visit qualityrated.org.

[♣]Licensed Capacity indicates the maximum number of children a facility is permitted to serve based on square footage, and is typically larger than the actual number of children served.

* Insufficient data

** Participating in the Quality Rated process, but not yet rated as of 5/1/2025.

Henry County, Georgia

Program Utilization

	County	State
Babies Can't Wait ^{4,5}	363	17,501
Childcare and Parent Services (CAPS) ^{4,5}	2,149	68,050
Georgia Home Visiting ^{4,5}	1	1,548

Parental Employment

	County	State
Population under age 6 living with parent⁶	16,237	738,206
Both parents or only parent in labor force	73%	68%
One parent in labor force, one not	20%	23%
No parent in labor force	7%	9%

Family, Health, and Services

	County #	County %	State %
Children under age 6 living below: ⁶			
100% Poverty	3,100	18%	20%
150% Poverty	3,976	24%	32%
200% Poverty	6,000	36%	43%
Children under age 6 without health insurance ⁶	975	6%	5%
Limited English-speaking households ⁶	1,380	2%	3%
Substantiated Abuse/Neglect Reports (unduplicated) ⁷	254	4.0 [†]	4.5 [†]
Births to mothers who are not high school graduates ⁸	180	7%	11%
Births to girls ages 15-19 ⁸	96	10.0 [†]	16.5 [†]
Low birth weight babies ⁸	329	12%	11%
Preterm babies ⁸	336	13%	12%
Asthma-related ER visits (ages 0-4) ⁸	125	89.0 [‡]	93.2 [‡]

† Rate per 1,000 population
‡ Rate per 10,000 population
* Insufficient data

◆ All programs ensure the highest quality data to the extent possible. Numbers represent total children enrolled in the program at any time during the year, which is generally greater than the number enrolled at any given point in time. Each agency and program participating in GA CACDS maintains its own data, and each one has protocols for data entry and data quality. GA CACDS does not conduct any additional data quality measures.

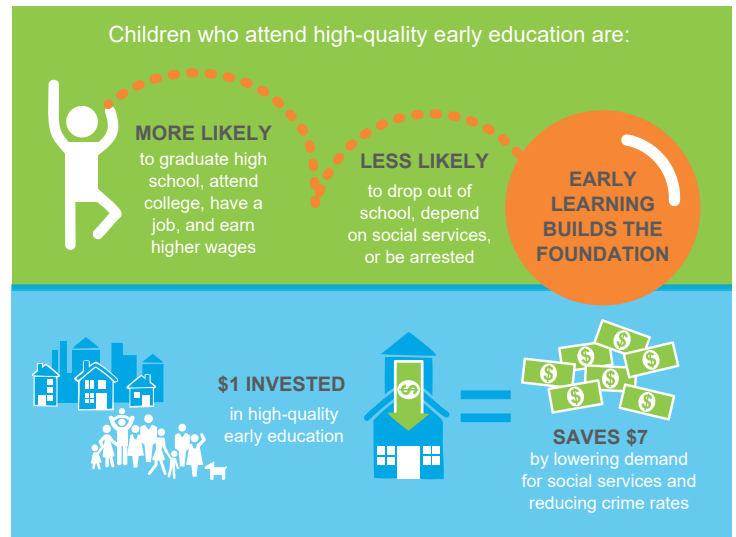
Economic Status



Of every 20 children ages 0-5 in Henry County, Georgia, **7 are economically disadvantaged, including 4 living in poverty.**⁶

Children by Race and Ethnicity

	County	State
Population under age 5⁶	13,875	639,111
White	28%	44%
Black or African-American	56%	32%
Asian and Pacific Islander	2%	4%
Other race or multiracial	13%	19%
Hispanic or Latino (any race)	12%	16%



Sources:

1. Georgia Department of Early Care and Learning, 5/1/2025
2. Georgia Department of Education, FTE 2025-1
3. The Office of Head Start Program Information Report, 1/2025
4. Georgia Governor's Office of Student Achievement, SY 2024
5. Georgia's Cross-Agency Child Data System (CACDS), FY 2023
6. U.S. Census Bureau, American Community Survey (2019-23)
7. KIDS COUNT, 2023
8. Georgia Department of Public Health, OASIS (annual average 2021-23)