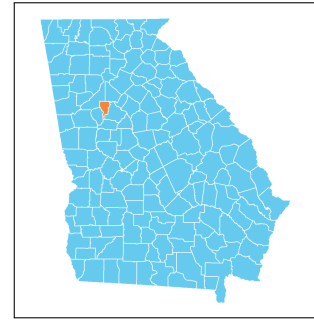


Clayton County, Georgia Early Childhood Profile

The Georgia Early Childhood Profiles are produced by GEEARS: Georgia Early Education Alliance for Ready Students, with technical assistance from Neighborhood Nexus. GEEARS is a nonpartisan, nonprofit organization whose mission is support high-quality early learning and healthy development for Georgia's youngest children, from birth to five, by championing policies, promoting innovative and evidence-based practices, and building public will. These profiles highlight indicators relevant to early childhood and school readiness. To learn more, please visit www.geears.org.



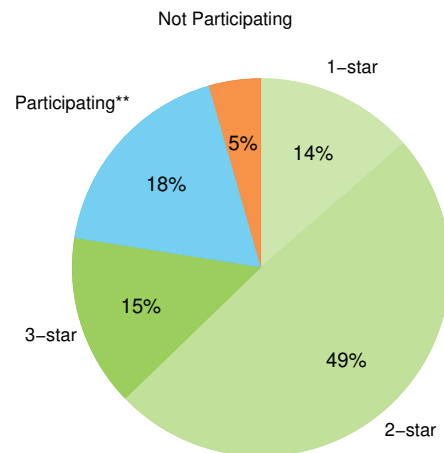
Early Care and Education Providers

	County	State
Total Early Learning Providers¹	211	4,912
Child Care Learning Centers	105	2,848
<i>Licensed to serve infants</i>	85%	85%
<i>Licensed to serve toddlers</i>	94%	92%
<i>Licensed to serve preschoolers</i>	99%	100%
Family Child Care Learning Homes	72	1,088
<i>Licensed to serve infants</i>	85%	85%
<i>Licensed to serve toddlers</i>	99%	97%
<i>Licensed to serve preschoolers</i>	97%	97%
Other Providers [†]	34	976
Total Licensed Capacity^{*1}	11,520	344,062
Quality Rated: [#]	87%	74%
Child Care Learning Centers	11,088	337,574
Quality Rated: [#]	88%	75%
<i>1-star programs</i>	17%	15%
<i>2-star programs</i>	57%	48%
<i>3-star programs</i>	14%	11%
Family Child Care Learning Homes	432	6,488
Quality Rated: [#]	71%	47%
<i>1-star programs</i>	11%	5%
<i>2-star programs</i>	40%	29%
<i>3-star programs</i>	19%	13%

Third Grade Assessment Results

	County	State
Students Tested, ELA⁴	3,512	123,635
Proficient/Distinguished Learners:	21%	39%
<i>White</i>	27%	52%
<i>Black or African-American</i>	21%	27%
<i>Hispanic or Latino</i>	17%	27%
<i>Limited English Proficiency</i>	15%	16%
<i>Economically Disadvantaged</i>	21%	29%
Students Tested, Math⁴	3,511	123,534
Proficient/Distinguished Learners:	24%	46%
<i>White</i>	30%	61%
<i>Black or African-American</i>	23%	30%
<i>Hispanic or Latino</i>	23%	35%
<i>Limited English Proficiency</i>	20%	27%
<i>Economically Disadvantaged</i>	24%	35%

Quality Rated Licensed Early Learning Providers¹



Program Enrollment

	County	State
Kindergarten ²	3,382	117,758
Head Start and Early Head Start ³	356	20,825

[†]The "Other Providers" category represents entities not subject to licensing by The Georgia Department of Early Care and Learning (DECAL) such as local school systems. Only providers known to DECAL are included.

[#]*Quality Rated* is Georgia's Quality Rating and Improvement System for child care and early learning programs. For more information, visit qualityrated.org.

[♣]Licensed Capacity indicates the maximum number of children a facility is permitted to serve based on square footage, and is typically larger than the actual number of children served.

* Insufficient data

** Participating in the Quality Rated process, but not yet rated as of 5/1/2025.

Clayton County, Georgia

Program Utilization

	County	State
Babies Can't Wait ^{4,5}	482	17,501
Childcare and Parent Services (CAPS) ^{4,5}	4,991	68,050
Georgia Home Visiting ^{4,5}	3	1,548

Parental Employment

	County	State
Population under age 6 living with parent⁶	24,525	738,206
Both parents or only parent in labor force	74%	68%
One parent in labor force, one not	18%	23%
No parent in labor force	8%	9%

Family, Health, and Services

	County #	County %	State %
Children under age 6 living below: ⁶			
100% Poverty	6,294	25%	20%
150% Poverty	10,938	43%	32%
200% Poverty	15,923	63%	43%
Children under age 6 without health insurance ⁶	2,156	8%	5%
Limited English-speaking households ⁶	4,568	4%	3%
Substantiated Abuse/Neglect Reports (unduplicated) ⁷	225	2.9 [†]	4.5 [†]
Births to mothers who are not high school graduates ⁸	554	15%	11%
Births to girls ages 15-19 ⁸	221	20.0 [†]	16.5 [†]
Low birth weight babies ⁸	581	15%	11%
Preterm babies ⁸	512	13%	12%
Asthma-related ER visits (ages 0-4) ⁸	297	148.2 [‡]	93.2 [‡]

† Rate per 1,000 population
‡ Rate per 10,000 population
* Insufficient data

◆ All programs ensure the highest quality data to the extent possible. Numbers represent total children enrolled in the program at any time during the year, which is generally greater than the number enrolled at any given point in time. Each agency and program participating in GA CACDS maintains its own data, and each one has protocols for data entry and data quality. GA CACDS does not conduct any additional data quality measures.

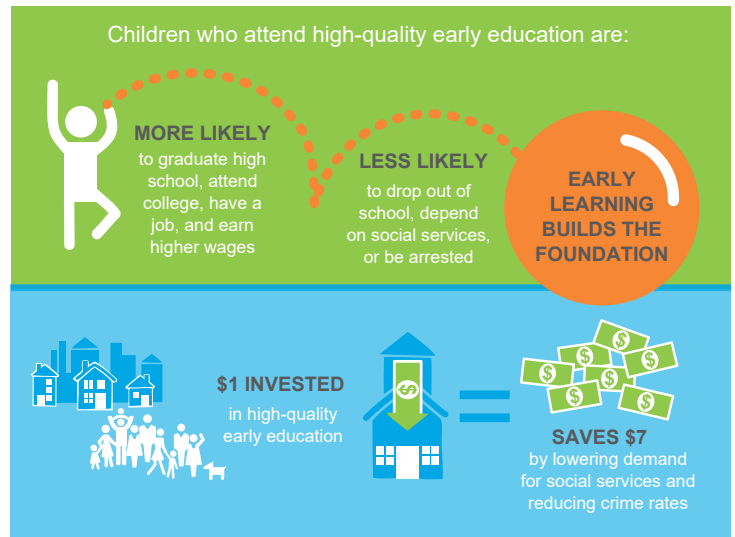
Economic Status



Of every 20 children ages 0-5 in Clayton County, Georgia, **13 are economically disadvantaged, including 5 living in poverty.**⁶

Children by Race and Ethnicity

	County	State
Population under age 5⁶	20,910	639,111
White	9%	44%
Black or African-American	69%	32%
Asian and Pacific Islander	4%	4%
Other race or multiracial	17%	19%
Hispanic or Latino (any race)	19%	16%



Sources:

1. Georgia Department of Early Care and Learning, 5/1/2025
2. Georgia Department of Education, FTE 2025-1
3. The Office of Head Start Program Information Report, 1/2025
4. Georgia Governor's Office of Student Achievement, SY 2024
5. Georgia's Cross-Agency Child Data System (CACDS), FY 2023
6. U.S. Census Bureau, American Community Survey (2019-23)
7. KIDS COUNT, 2023
8. Georgia Department of Public Health, OASIS (annual average 2021-23)