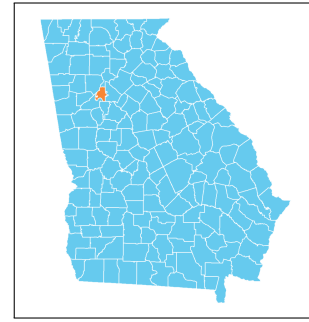


City of Atlanta Early Childhood Profile

The Georgia Early Childhood Profiles are produced by GEEARS: Georgia Early Education Alliance for Ready Students, with technical assistance from Neighborhood Nexus. GEEARS is a nonpartisan, nonprofit organization whose mission is support high-quality early learning and healthy development for Georgia's youngest children, from birth to five, by championing policies, promoting innovative and evidence-based practices, and building public will. These profiles highlight indicators relevant to early childhood and school readiness. To learn more, please visit www.geears.org.



Early Care and Education Providers[▼]

	Atlanta	State
Total Early Learning Providers¹	237	4,954
Child Care Learning Centers	174	2,760
<i>Licensed to serve infants</i>	85%	85%
<i>Licensed to serve toddlers</i>	93%	92%
<i>Licensed to serve preschoolers</i>	99%	100%
Family Child Care Learning Homes	24	1,269
<i>Licensed to serve infants</i>	75%	86%
<i>Licensed to serve toddlers</i>	100%	96%
<i>Licensed to serve preschoolers</i>	96%	95%
Other Providers [†]	39	925
Total Licensed Capacity^{*1}	21,788	332,245
Quality Rated: [#]	60%	70%
Child Care Learning Centers	21,644	324,675
Quality Rated: [#]	60%	71%
<i>1-star programs</i>	21%	25%
<i>2-star programs</i>	30%	35%
<i>3-star programs</i>	10%	10%
Family Child Care Learning Homes	144	7,570
Quality Rated: [#]	54%	43%
<i>1-star programs</i>	33%	18%
<i>2-star programs</i>	17%	16%
<i>3-star programs</i>	4%	10%

Program Enrollment

	Atlanta	State
Kindergarten ²	3,659	114,444
Lottery Funded Georgia Pre-K ^{1 ‡}	2,380	71,976
<i>At-risk children served¹</i>	58%	43%
Head Start and Early Head Start ^{3 ‡}	2,608	22,217

[†]The "Other Providers" category represents entities not subject to licensing by The Georgia Department of Early Care and Learning (DECAL) such as local school systems. Only providers known to DECAL are included.

[#]Quality Rated is Georgia's Quality Rating and Improvement System for child care and early learning programs. For more information, visit qualityrated.org.

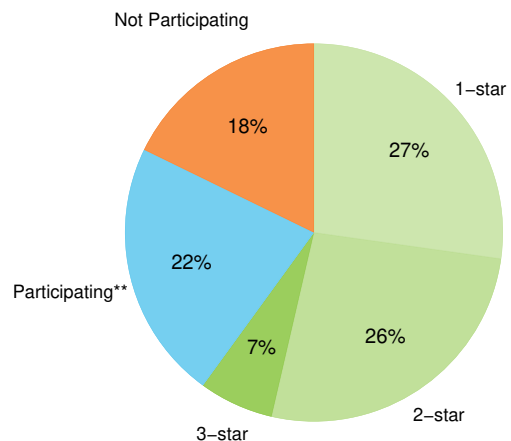
^{*}Licensed Capacity indicates the maximum number of children a facility is permitted to serve based on square footage, and is typically larger than the actual number of children served.

^{*}Insufficient data

Third Grade Assessment Results

	Atlanta	State
Students Tested, ELA⁴	4,501	128,777
Proficient/Distinguished Learners:	37%	42%
<i>White</i>	82%	57%
<i>Black or African-American</i>	24%	27%
<i>Hispanic or Latino</i>	36%	31%
<i>Limited English Proficiency</i>	25%	18%
<i>Economically Disadvantaged</i>	23%	31%
Students Tested, Math⁴	4,501	128,610
Proficient/Distinguished Learners:	45%	52%
<i>White</i>	87%	67%
<i>Black or African-American</i>	33%	35%
<i>Hispanic or Latino</i>	42%	45%
<i>Limited English Proficiency</i>	33%	35%
<i>Economically Disadvantaged</i>	32%	41%

Quality Rated Licensed Early Learning Providers¹



[‡]There may be overlap between Pre-K and Head Start enrollments due to braided and blended funding sources, so these categories are not summative.

** Participating in the Quality Rated process, but not yet rated as of 10/1/2021.

City of Atlanta

Program Utilization

	DeKalb	Fulton
Babies Can't Wait ^{4,5}	1,342	1,330
Childcare and Parent Services (CAPS) ^{4,5}	5,626	6,474
Georgia Home Visiting ^{4,5}	197	54

Parental Employment

	Atlanta	State
Population under age 6 living with parent ⁶	30,719	753,784
Both parents or only parent in labor force	74%	66%
One parent in labor force, one not	15%	25%
No parent in labor force	11%	8%

Family, Health, and Services

	Atlanta #	Atlanta %	State %
Children under age 6 living below: ⁶			
100% Poverty	10,900	34%	24%
150% Poverty	14,021	44%	37%
200% Poverty	16,071	51%	48%
Children under age 6 without health insurance ⁶	1,409	4%	6%
Limited English-speaking households ⁶	3,056	1%	3%

	DeKalb	Fulton	State
Substantiated Abuse/Neglect Reports (duplicated) ⁷	1.3 [‡]	0.9 [‡]	1.9 [‡]
Births to mothers who are not high school graduates ⁸	12%	9%	13%
Births to girls ages 15-19 ⁸	22.4 [†]	14 [†]	20.7 [†]
Low birth weight babies ⁸	11%	11%	10%
Preterm babies ⁸	11%	11%	12%
Asthma-related ER visits (ages 0-4) ⁸	164.8 [‡]	181.8 [‡]	116.5 [‡]

† Rate per 1,000 population
‡ Rate per 10,000 population
* Insufficient data

♣ All programs ensure the highest quality data to the extent possible. Numbers represent total children enrolled in the program at any time during the year, which is generally greater than the number enrolled at any given point in time. Each agency and program participating in GA CACDS maintains its own data, and each one has protocols for data entry and data quality. GA CACDS does not conduct any additional data quality measures.

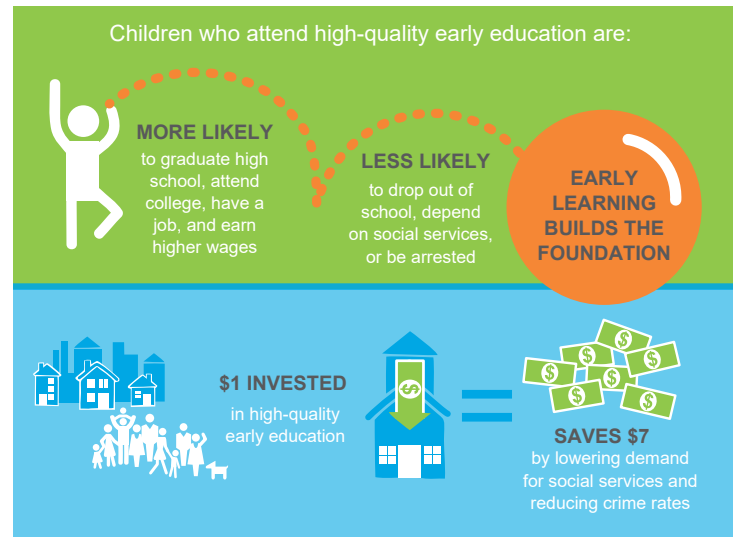
Economic Status



Of every 20 children ages 0-5 in the City of Atlanta, 10 are economically disadvantaged, including 7 living in poverty.⁶

Children by Race and Ethnicity

	Atlanta	State
Population under age 5 ⁶	26,577	656,677
White	34%	52%
Black or African-American	58%	33%
Asian and Pacific Islander	2%	4%
Other race or multiracial	6%	11%
Hispanic or Latino (any race)	6%	15%



Sources:

1. Georgia Department of Early Care and Learning, 10/1/2021
2. Georgia Department of Education, FTE 2021-1
3. The Office of Head Start Program Information Report, 12/2020
4. Georgia Governor's Office of Student Achievement, SY 2019
5. Georgia's Cross-Agency Child Data System (CACDS), 7/2017-6/2018
6. U.S. Census Bureau, American Community Survey (2015-19)
7. Fostering Court Improvement, 1/2020-12/2020
8. Georgia Department of Public Health, OASIS (annual average 2017-19)