

## Appendix: Regional Green Infrastructure

### Recent Regional Efforts

Since 2003, ARC has been working on issues related to natural resource, greenspace, and parks planning in the Atlanta region. Stakeholders from around the region have consistently agreed on the need to establish strategies and basic support structures that could provide assistance to the many groups in the region that work on greenspace issues. In September 2005, the ARC Board echoed the direction given to ARC staff by local and regional greenspace leaders by requesting that ARC become more active in the coordination of greenspace efforts around the region. The following resources have been developed in support of these requests:

Protected Lands Inventory and Database: An inventory of all protected lands and greenspace in the 20-county region has been developed and maintained based input from public and non-profit stakeholders. The Inventory will be a valuable input in developing ARC's initial Regionally Important Resources Map.

DRAFT Green Infrastructure Priorities Map: The Draft Priorities Map attempted to identify areas around the region that should be targeted for permanent protection in the future. The Map was never adopted because it became clear that ARC would soon be responsible for developing a Regionally Important Resource Map under new DCA rules. Developing the Draft Priorities Map did serve as an experience that will assist in developing the knowledge necessary to produce the RIR map.

Green Infrastructure Toolkit: The Toolkit provides guidance and resources to local governments working to protect lands and natural resources around the region. The Toolkit will updated in 2010 as ARC develops a Regional Resource Plan.

### Existing Park and Greenspace Assets

Scenic views, rock outcroppings, wetlands, flood plains, steep slopes, river corridors, sensitive soils, water resources and plant and animal habitats all contribute to the natural beauty of the Atlanta region. The most significant concentrations of wetlands, steep slopes, flood plains, sensitive soils, plant and animal habitats and scenic views are within the river and stream corridors in our region.

The region has a varied supply of major parks and recreation areas; wildlife management areas; conservation areas; nature preserves; regional trails and water resources. Over the years, several federal agencies, State of Georgia departments and authorities, private landowners, city and county public agencies and non-profit organizations have pursued the development of park land, open space, greenspace, recreation and conservation areas.

While the region has significant park and greenspace assets, significant investments in parks and greenspace are needed over the next two decades to provide a portfolio of amenities that meets the needs of the growing region. Figures 1 and 2 show two common metrics used to

evaluate the adequacy of the current parkland to meet the needs of residents (acres of park space per 1,000 people and percent of land area by county dedicated to parks and greenspace).

Figure 3 on the following page maps existing parks and greenspace in ARC's Protected Lands Database.

**Figure 1: Parks and Greenspace per 1,000 Residents (By County)**

County	Parks & Greenspace		Recreation & Protected Lands(Acres) Per 1,000 Residents
	(Acres)	2009 Population	
Cherokee	17845.7	205900	86.7
Clayton	5332.5	281900	18.9
Cobb	12207.8	676800	18.0
DeKalb	11552.2	731200	15.8
Douglas	4894.9	128800	38.0
Fayette	3304.5	106700	31.0
Fulton	11767.4	957900	12.3
Gwinnett	12381.3	757300	16.3
Henry	2356.6	192800	12.2
Rockdale	7562.6	85000	89.0
Total	89205.7	4124300	21.6

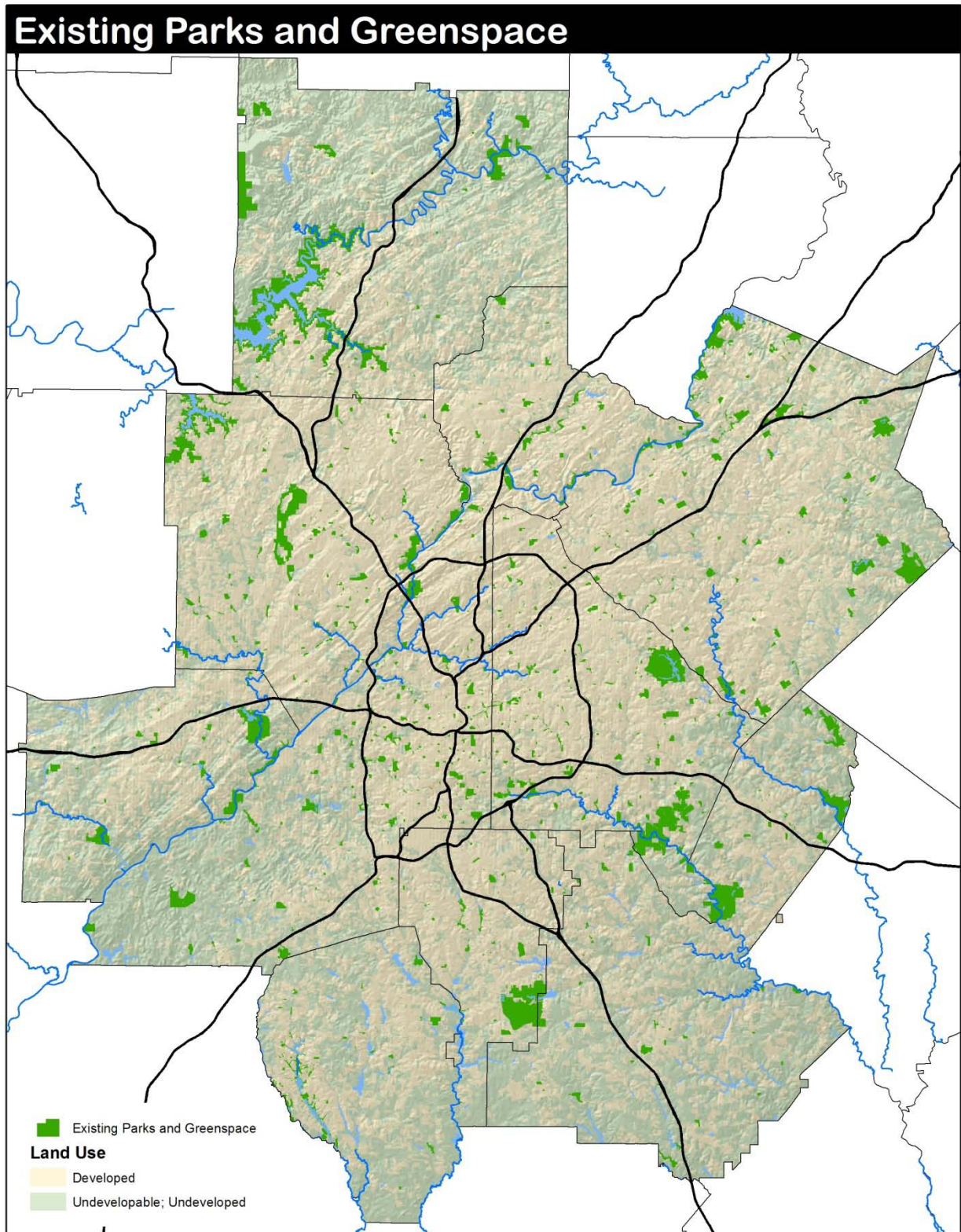
Source: ARC Protected Lands Inventory & 2009 ARC Population Estimates

**Figure 2: Parks and Greenspace - % Land Area of 10-County Region**

County	Parks & Greenspace (Acres)	Total Land Area (Acres)	% County Devoted to Parks and Greenspace
Cherokee	17845.7	277,703	6.43%
Clayton	5332.5	92,321	5.78%
Cobb	12207.8	220,453	5.54%
DeKalb	11552.2	173,348	6.66%
Douglas	4894.9	128,149	3.82%
Fayette	3304.5	127,498	2.59%
Fulton	11767.4	342,095	3.44%
Gwinnett	12381.3	279,448	4.43%
Henry	2356.6	207,627	1.14%
Rockdale	7562.6	84,546	8.94%
Total	89205.7	1,933,188	4.61%

Source: ARC Protected Lands Inventory

Figure 3: Existing Parks and Greenspace - 10-County Region



## Regionally Important Resources

ARC will be developing a Regional Resource Plan as part of the overall Plan 2040 initiative. The Resource Plan will:

- Enhance the focus on protection and management of important natural and cultural resources in the Atlanta region.
- Provide for careful consideration of, and planning for, impacts of new development on these important resources.
- Improve local, regional, and state level coordination in the protection and management of identified resources.

The Resource Plan will be developed with input from numerous stakeholders around the region and will be reviewed by the State of Georgia and ultimately adopted and promulgated by ARC. All interested parties from around the region including local governments, state and federal agencies, local land trusts, conservation organizations, and the public will be consulted in developing the Resource Plan.

In the fall of 2009 ARC invited local governments, non-profit organizations and citizens from around the region to nominate potentially Regionally Important Resources to be considered during the Plan 2040 process

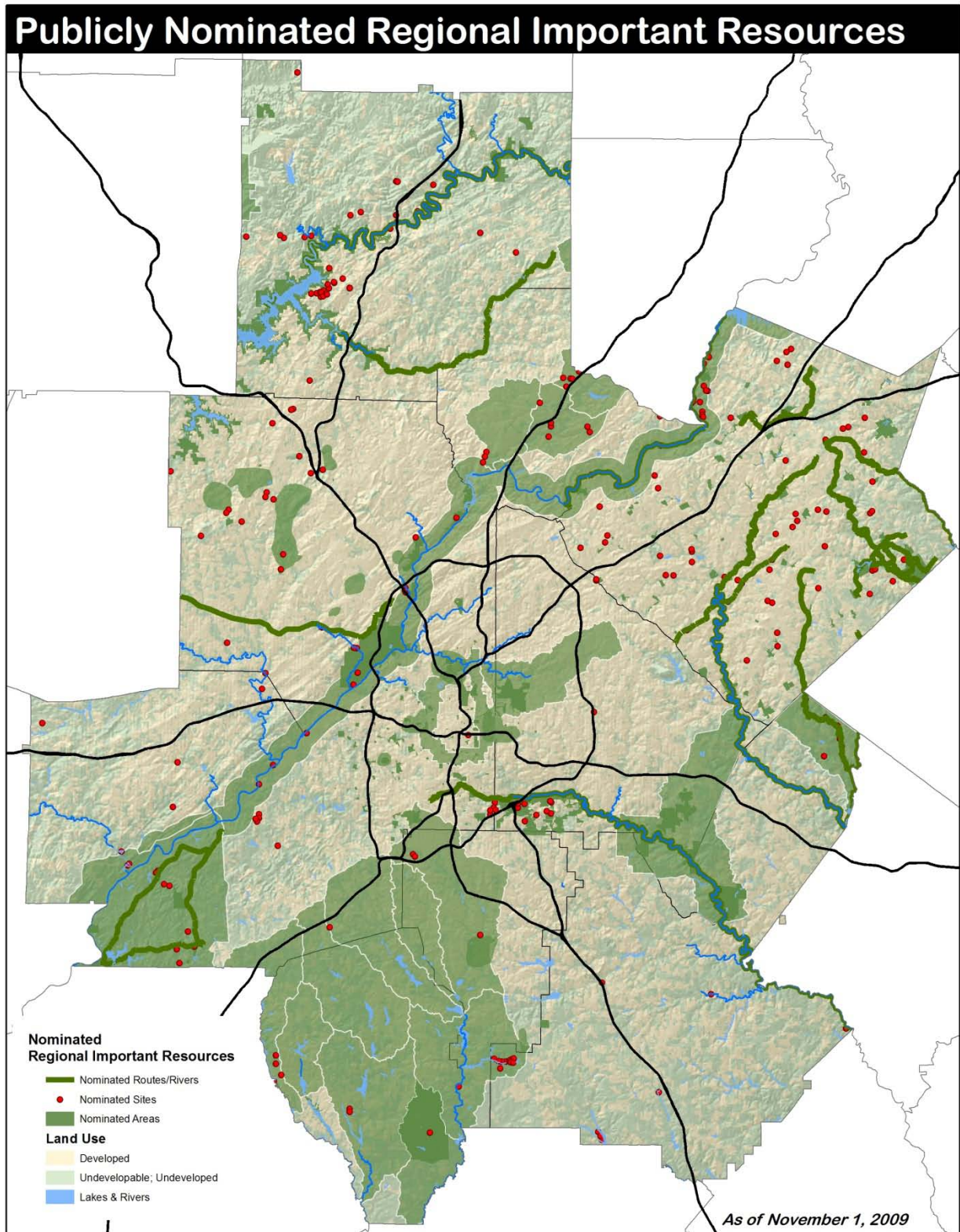
The following criteria were adopted by the ARC Board to guide the evaluation of nominated and other resources:

1. Preserves water quality and quantity by protecting drainage, flood control, recharge areas, watersheds, buffers etc.
2. Creates or preserves active or passive greenspaces including trails, gardens and informal places of natural enjoyment in areas currently underserved by greenspace.
3. Protects wildlife habitat by creating, buffering, preserving, habitat areas and corridors.
4. Preserves areas that have historical or cultural value by virtue of history, place or time period represented.
5. Preserves significant working agricultural or forest resources and/or creates opportunities for local food production activities.
6. Areas that contribute to region-wide connections between existing and proposed regional resources.

Figure 4 on the following page illustrates the many potential resources from around the region that were nominated. A list of nominated resources is also provided. Figure 5 provides a list of all resources nominated.



Figure 4: Areas Nominated for Inclusion on the Regionally Important Resources Map (As of 11/1/09)



**Figure 5: Nominated Regional Resources (Through 11/1/09)**

Resource	Nominating Party	Location (County)
Abcrombie - Jarrard Farm	Chattahoochee Hills Civic Association	Fulton
Alcovy River (Gwinnett to Jackson lake)	Newton County	Multiple
Alcovy River Greenway (including Gwinnett, Walton, Newton counties)	Newton County	Newton
Arabia Mountain National Heritage Area (DeKalb & Rockdale)	Arabia Mountain Heritage Area Alliance	Multiple
Arabia Mountain National Heritage Area (DeKalb & Rockdale)	DeKalb County	Multiple
Atlanta BeltLine	Park Pride	Fulton
Atlanta BeltLine	City of Atlanta	Fulton
Atlanta Parks system	Park Pride	Multiple
Atlanta University Center Historic District	City of Atlanta	Fulton
Ball Ground Historic District	Cherokee County	Cherokee
Barrett Park	City of College Park	Fulton
Bear Creek Reservoir	Newton County	Newton
Bert Adams Boy Scout Camp	Newton County	Newton
Big Creek Watershed (Fulton & Forsyth)	Smart Growth Forsyth	Multiple
Big Haynes/Little Haynes Creeks (Gwinnett, Walton, Newton and Rockdale)	Newton County	Multiple
Brick Store	Newton County	Newton
Bullard-Stockton Property	Cobb County	Cobb
Burge Plantation	Newton County	Newton
Canton Historic District	Cherokee County	Cherokee
Cemeteries of Chattahoochee Hills	Chattahoochee Hills Civic Association	Fulton

**Figure 6: Nominated Regional Resources (Through 11/1/09) – cont.**

<b>Resource</b>	<b>Nominating Party</b>	<b>Location (County)</b>
Centennial Olympic Park	Park Pride	Fulton
Centerville Park	Gwinnett County	Gwinnett
Charles E. Phillips, Sr. Esquire Park	City of College Park	Fulton
Chastain Memorial Park	City of Atlanta	Fulton
Chatt Hills - Cedar Rock	Chattahoochee Hills Civic Association	Fulton
Chatt Hills - Hutcheson Ferry Park Outcrop	Chattahoochee Hills Civic Association	Fulton
Chatt Hills - Indian Mill	Chattahoochee Hills Civic Association	Fulton
Chatt Hills - Split Rocks	Chattahoochee Hills Civic Association	Fulton
Chattahoochee Hill Country - Scenic Byways	Chattahoochee Hills Civic Association	Fulton
Chattahoochee Hill Country (Forests, Watersheds and Wildlife) - Carroll, Coweta,	Chattahoochee Hill Country Conservancy	Multiple
Chattahoochee River	TPL	Multiple
Chattahoochee River (Cobb County)	Cobb County	Multiple
Chattahoochee River (Gwinnett) & River Corridor Parks and Greenspace	Gwinnett County	Multiple
Chattahoochee River (Johnson Ferry North)	Private Individual	Fulton
Chattahoochee River National Recreation Area	Cobb County	Multiple
Chattahoochee River Park	Chattahoochee Hills Civic Association	Fulton
City Hall / Rico Elementary School	Chattahoochee Hills Civic Association	Fulton
City of Atlanta Greenway Corridors	City of Atlanta	Fulton
City Pond (City of Covington and Newton County)	Newton County	Newton
Civil War Sites (incl. Kolb's Farm, Kennesaw Mtn, Marietta, Peachtree Creek, Atlanta)	Georgia Battlefield Association	Multiple

**Figure 7: Nominated Regional Resources (Through 11/1/09) – cont.**

<b>Resource</b>	<b>Nominating Party</b>	<b>Location (County)</b>
Clarkdale Historic District	Cobb County	Cobb
Cochran Mill Park	Chattahoochee Hills Civic Association	Fulton
College Park Auditorium	City of College Park	Fulton
College Park Cemetery	City of College Park	Fulton
College Park Golf Course	City of College Park	Fulton
College Park Historic District	City of College Park	Fulton
Concord Road and Covered Bridge Road	Cobb County	Cobb
Covington Historic District	Newton County	Newton
DeShong Park	Gwinnett County	Gwinnett
Dixie Coca-Cola Bottling Company	City of Atlanta	Fulton
Druid Hills Historic District	DeKalb County	DeKalb
Druid Hills Historic District & Olmsted Linear Parks	City of Atlanta	DeKalb
Etowah River Corridor	Cherokee County	Cherokee
Factory Shoals Park	Newton County	Newton
Fayette County Courthouse	Fayette County	Fayette
Five Forks - Trickum Road Corridor	Gwinnett County	Gwinnett
Flat Creek Nature Area	City of Peachtree City	Fayette
Flint River	Fayette County	Fayette
Fort Daniel Archeological Project	Gwinnett County	Gwinnett
Fox Theater	City of Atlanta	Fulton



**Figure 8: Nominated Regional Resources (Through 11/1/09) – cont.**

Resource	Nominating Party	Location (County)
Freeman's Mill Park	Gwinnett County	Gwinnett
Ga. Wildlife Federation Headquarters-Alcovy Conservation Center	Newton County	Newton
Gaither Plantation	Newton County	Newton
George Pierce Park	Gwinnett County	Gwinnett
Georgia FFA-FCCLA Center	Newton County	Newton
Georgia Gwinnett College	Gwinnett County	Gwinnett
Georgia International Convention Center	City of College Park	Fulton
Georgia State Capitol	City of Atlanta	Fulton
Grant Park	Park Pride	Fulton
Grant Park	City of Atlanta	Fulton
Graves Park	Gwinnett County	Gwinnett
Gwinnett - National Register Sites (17)	Gwinnett County	Gwinnett
Gwinnett - Rivers and Protected Watersheds (Alcovy, Appalachian, Yellow, Big Haynes)	Gwinnett County	Gwinnett
Gwinnett Braves Stadium	Gwinnett County	Gwinnett
Gwinnett Civic & Cultural Center / Gwinnett Arena	Gwinnett County	Gwinnett
Gwinnett County - Major Lakes	Gwinnett County	Gwinnett
Gwinnett Environmental & Heritage Center	Gwinnett County	Gwinnett
Gwinnett Greenway System	Gwinnett County	Gwinnett
Gwinnett Parks System	Gwinnett County	Gwinnett
Gwinnett Public Library System	Gwinnett County	Gwinnett

**Figure 9: Nominated Regional Resources (Through 11/1/09) – cont.**

<b>Resource</b>	<b>Nominating Party</b>	<b>Location (County)</b>
Gwinnett Water Towers	Private Individual	Gwinnett
Harbins Alcovy Park	Gwinnett County	Gwinnett
Herndon Home (Mansion)	Friends of the Herndon Home	Fulton
Herndon Mansion	City of Atlanta	Fulton
Hightower Trail	Newton County	Newton
Hutcheson Ferry Park	Chattahoochee Hills Civic Association	Fulton
Hyde Farm	Cobb County	Cobb
Judge William Wilson House	Private Individual	Fulton
Lake Allatoona (Lake and Corps properties)	Cobb County	Multiple
Lake Allatoona (Lake and Corps properties)	Cherokee County	Multiple
Lake Horton (including Woolsey Creek, Antioch Creek and Horton Creek)	Fayette County	Fayette
Lake Kedron (including Lake Peachtree and Flat Creek)	Fayette County	Fayette
Lake Lanier/Buford Dam	Gwinnett County	Gwinnett
Lake McIntosh (including Line Creek and Shoal Creek)	Fayette County	Fayette
Lake Roy Varner (Newton and Walton Counties)	Newton County	Newton
Line Creek Nature Area	City of Peachtree City	Fayette
Lionel Hampton & Beecher Hill Greenways	City of Atlanta	Fulton
Little Mulberry Park	Gwinnett County	Gwinnett
Little River Corridor	Cherokee County	Cherokee
Mansfield Historic District	Newton County	Newton

**Figure 10: Nominated Regional Resources (Through 11/1/09) – cont.**

Resource	Nominating Party	Location (County)
McDaniel Farm Park	Gwinnett County	Gwinnett
McGuirts Bridge Road	Newton County	Newton
Middle Chattahoochee River	GLCP	Multiple
Midtown Arts District	Midtown Alliance	Fulton
Millcreek Nature Center & Preserve	Gwinnett County	Gwinnett
MLK Historic Site and District	City of Atlanta	Fulton
Monastery of the Holy Spirit	Rockdale County	Rockdale
Nash Farm Battlefield Park	Henry County	Henry
National Register Archaeological Sites (throughout region)	Society for Georgia Archaeology	Multiple
Newborn Historic District	Newton County	Newton
Noonday Creek (Chastain Meadows)	Cobb County Water System	Cobb
Noonday Creek (Mark Avenue)	Cobb County Water System	Cobb
Old Social Circle Road	Newton County	Newton
Olmsted Linear Parks	Park Pride	DeKalb
Oxford College	Newton County	Newton
Oxford Historic District	Newton County	Newton
Panola Mountain State Conservation Park/Wolf Mountain Park	Henry County	Multiple
Panola Mountain State Park	Rockdale County	Rockdale
Peachtree Creek Watershed	DeKalb County	DeKalb
Piedmont Park	Park Pride	Fulton

**Figure 11: Nominated Regional Resources (Through 11/1/09) – cont.**

<b>Resource</b>	<b>Nominating Party</b>	<b>Location (County)</b>
Piedmont Park	City of Atlanta	Fulton
Pine Log and Garland Mountains (including Part V Protected Mountain area)	Cherokee County	Multiple
Pine Log Mountain	GLCP	Multiple
Porterdale Historic District	Newton County	Newton
Redwine Plantation	Chattahoochee Hills Civic Association	Fulton
Richard D. Zupp, Jr. Park	City of College Park	Fulton
River Line Historic Area (Cobb County)	River Line Historic Area	Cobb
S.D. Truitt 4-H Camp	City of College Park	Fulton
Salem United Methodist Church and Campground	Newton County	Newton
Shoupade Park	Cobb County	Cobb
Silver Comet Trail (Cobb County extent)	Cobb County	Cobb
Simpsonwood - United Methodist Conference Center	Gwinnett County	Gwinnett
Sixes Mill	Private Individual	Cherokee
Smith-Gilbert Gardens	City of Kennesaw	Cobb
Soapstone Ridge Historic District	DeKalb County	DeKalb
South Fulton Scenic Byway	Chattahoochee Hills Civic Association	Fulton
South River (DeKalb, Rockdale, Newton counties to Jackson Lake)	Newton County	Multiple
Starr's Mill	Fayette County	Fayette
Starrsville Historic District	Newton County	Newton
Stone Mountain Stadium	Gwinnett Sports Council	DeKalb



**Figure 12: Nominated Regional Resources (Through 11/1/09) – cont.**

Resource	Nominating Party	Location (County)
Suwanee Creek Park & Greenway	City of Suwanee	Gwinnett
The BeltLine	Private Individual	Fulton
The Varsity	Midtown Alliance	Fulton
Three Mountains Natural Heritage Area	GLCP	Multiple
Town Center Park	City of Suwanee	Gwinnett
Tribble Mill Park	Gwinnett County	Gwinnett
Watershed Protection District	Rockdale County	Rockdale
Weaver-Hearn House and Farm	Chattahoochee Hills Civic Association	Fulton
Whitewater Creek	Fayette County	Fayette
Woodward Academy	City of College Park	Fulton
Wren's Nest	City of Atlanta	Fulton
Yellow River (Gwinnett, DeKalb, Rockdale and Newton Counties to Lake Jackson)	Newton County	Multiple
Yellow River Park	Gwinnett County	Gwinnett