

PLAN 2040

Unified Growth Policy Map (UGPM)



ATLANTA REGIONAL COMMISSION

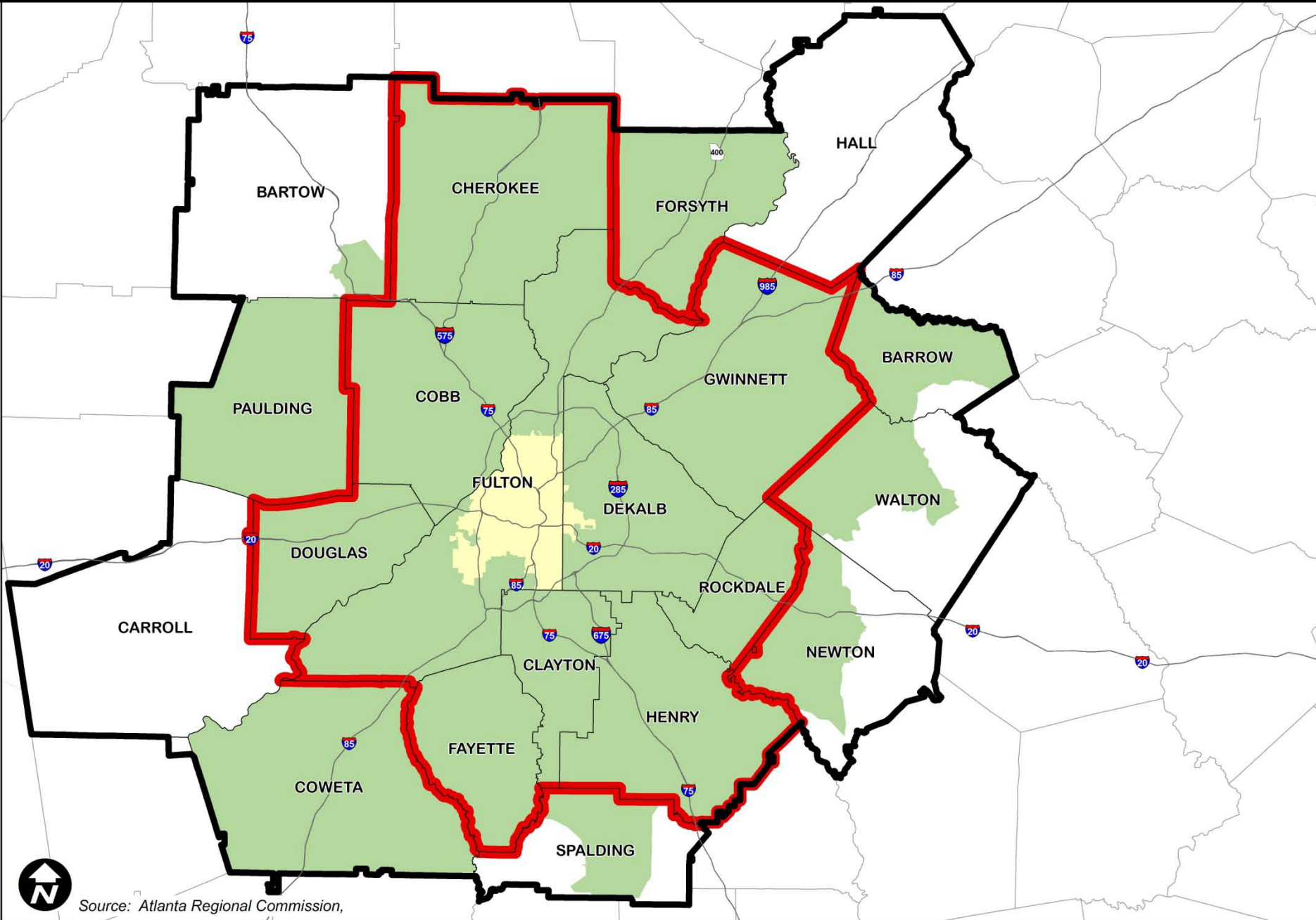
Plan 2040 Update

}	Regional Assessment	✓
	Stakeholder Involvement Program	✓
	Regional Resource Plan	✓
}	Unified Growth Policy Map	<i>underway</i>
	Regional Transportation Plan	<i>underway</i>
	Legal Review	<i>underway</i>
	Implementation Strategy	<i>underway</i>

Before Spring 2011

- We will define implementation of Plan 2040.
- We will review ARC's and local government authority to implement plans.
- We will review what are we doing now.
- We will outline actions for the next 5 years.

Planning Areas of the Atlanta Regional Commission



Source: Atlanta Regional Commission,



Cobb
←



Gwinnett ↑
↓ DeKalb

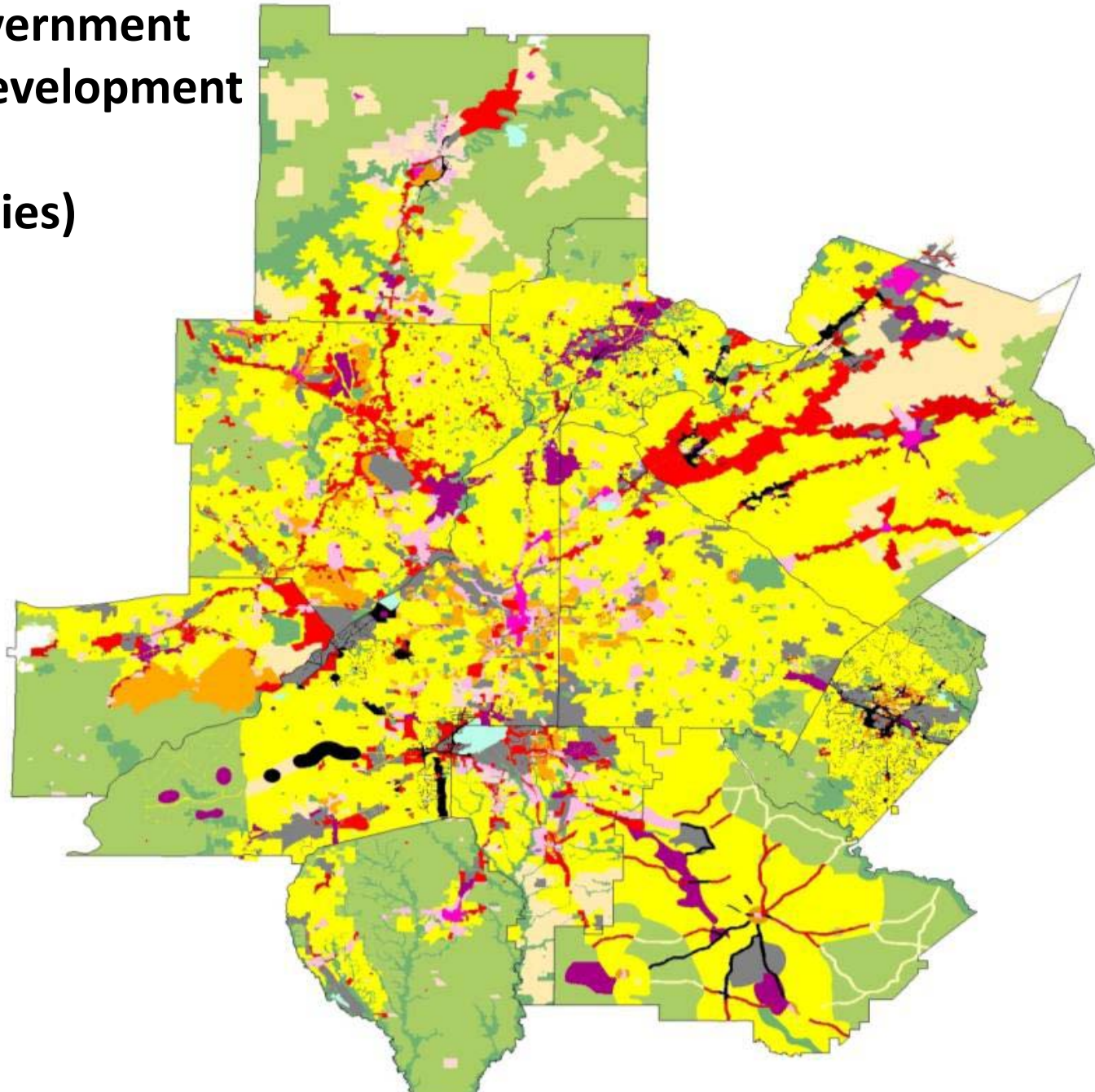
Atlanta →



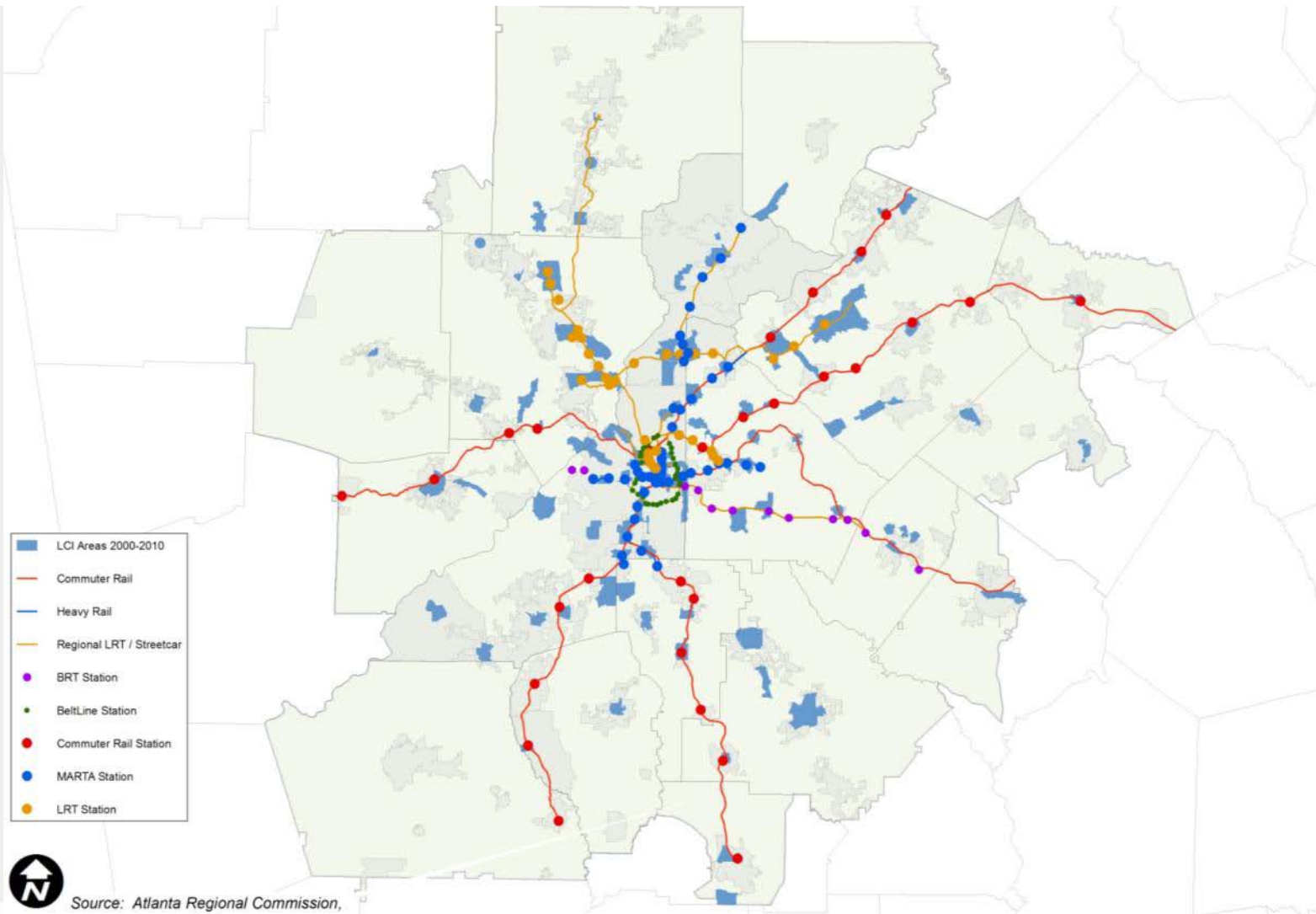
←
Henry

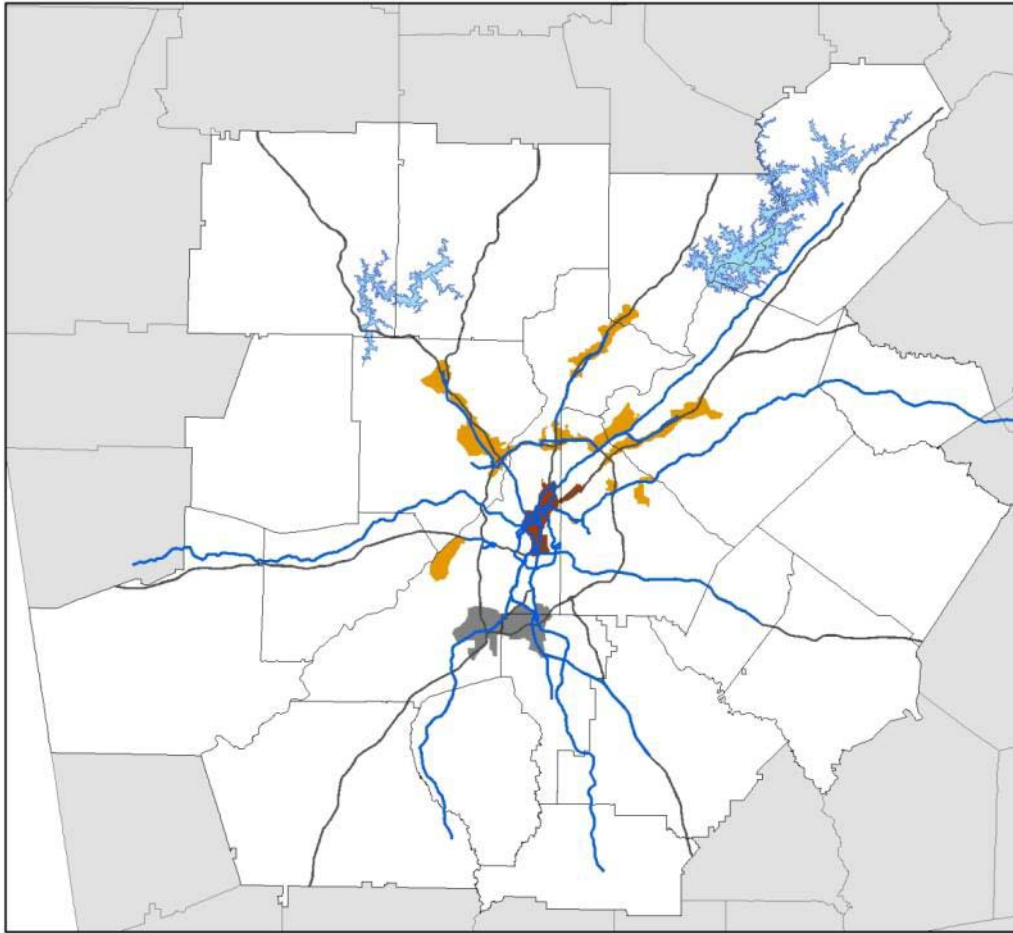


**Local Government
Future Development
Maps
(10 counties)**

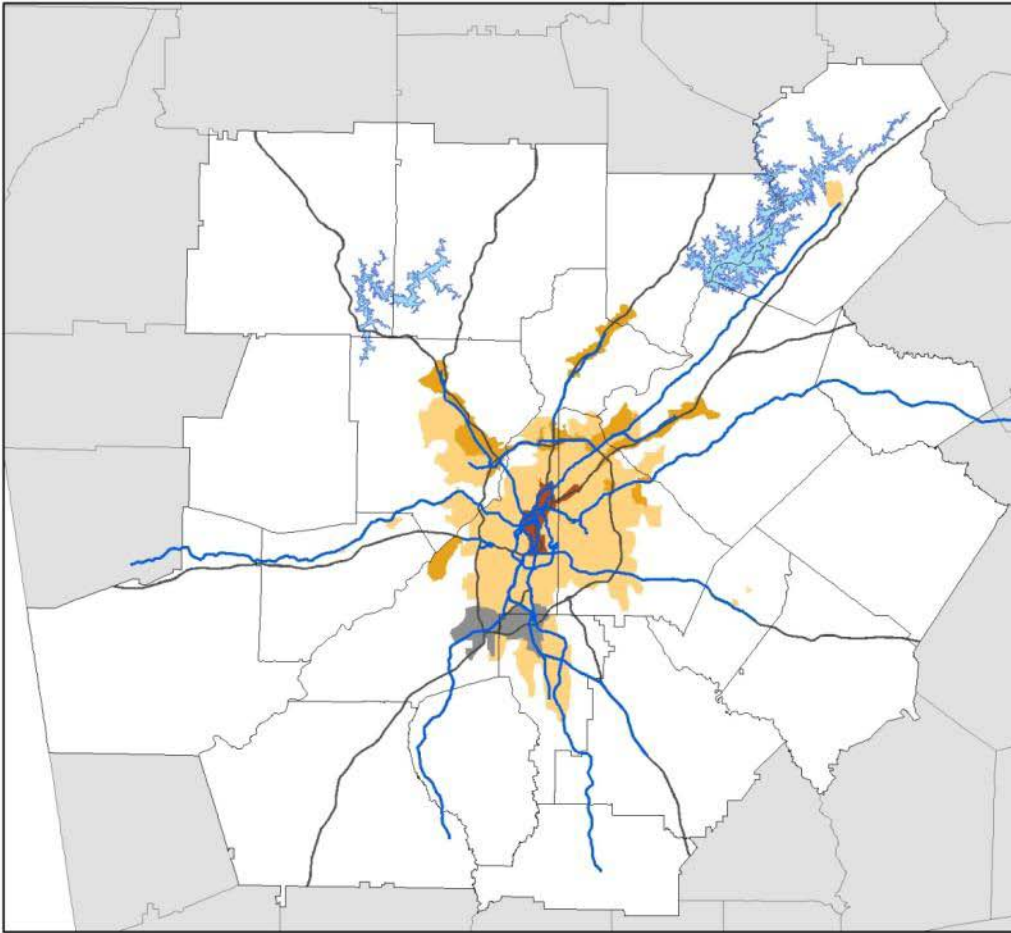


LCI areas and TPB Concept 3 transit corridors

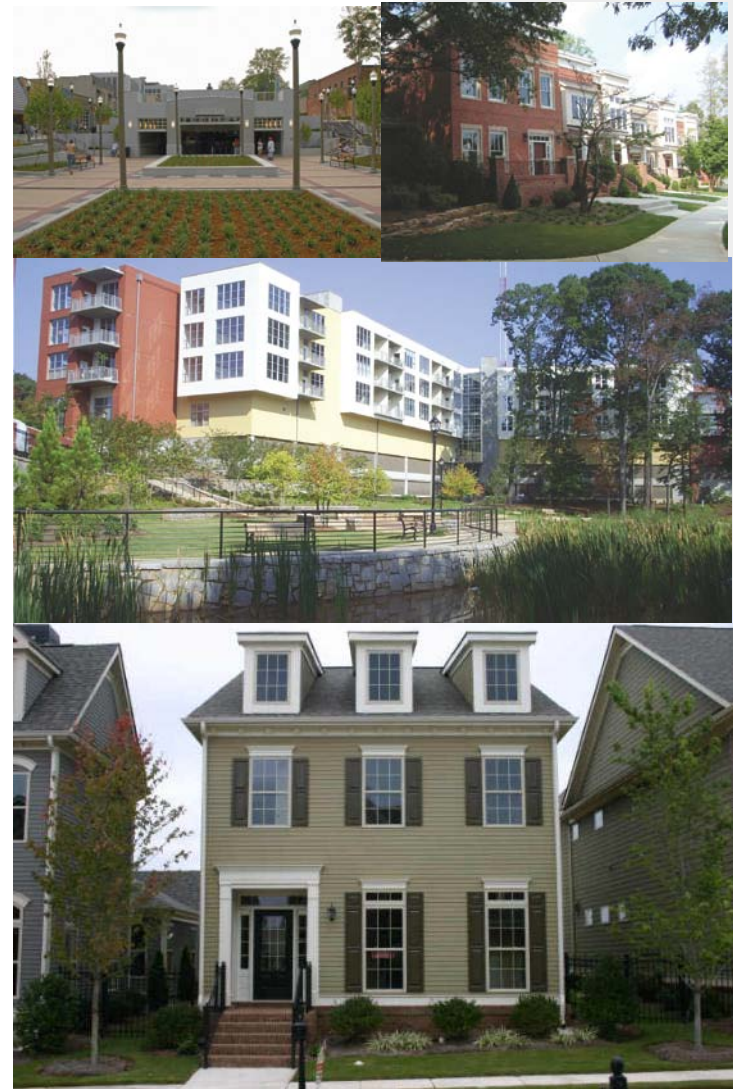


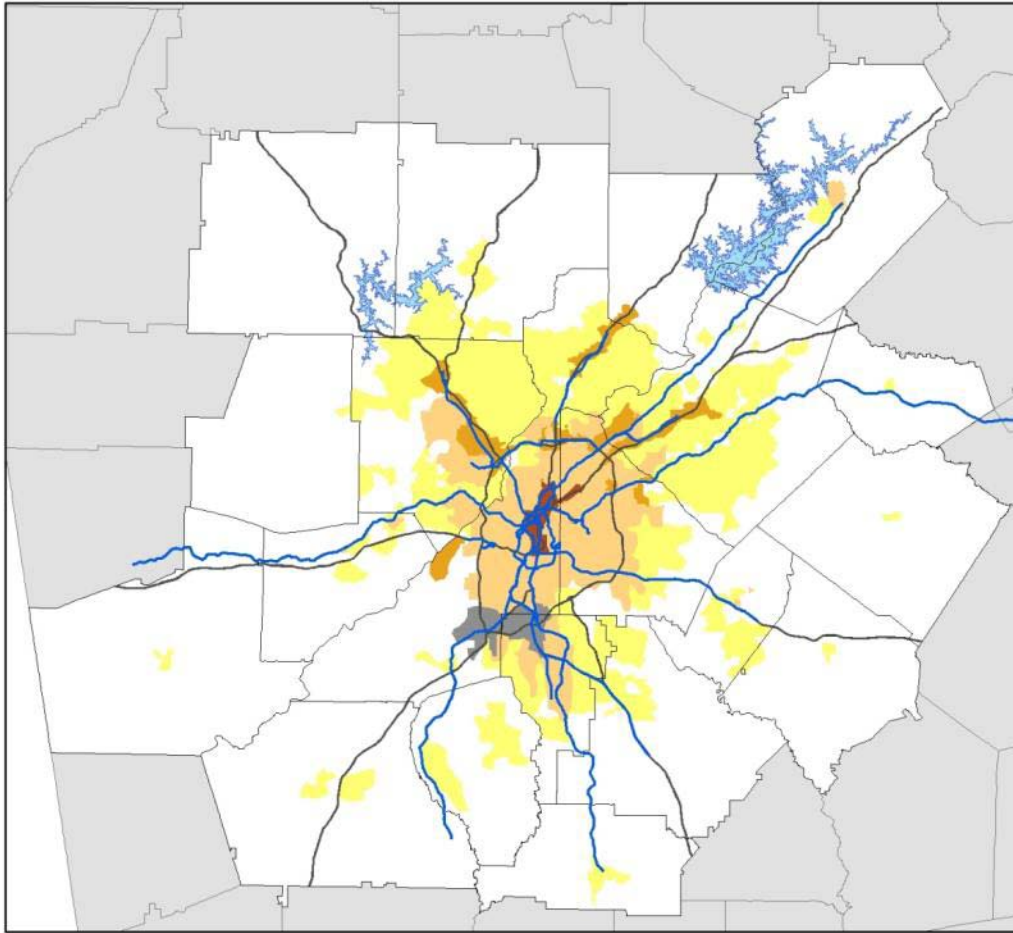


Regional Core and Employment Areas



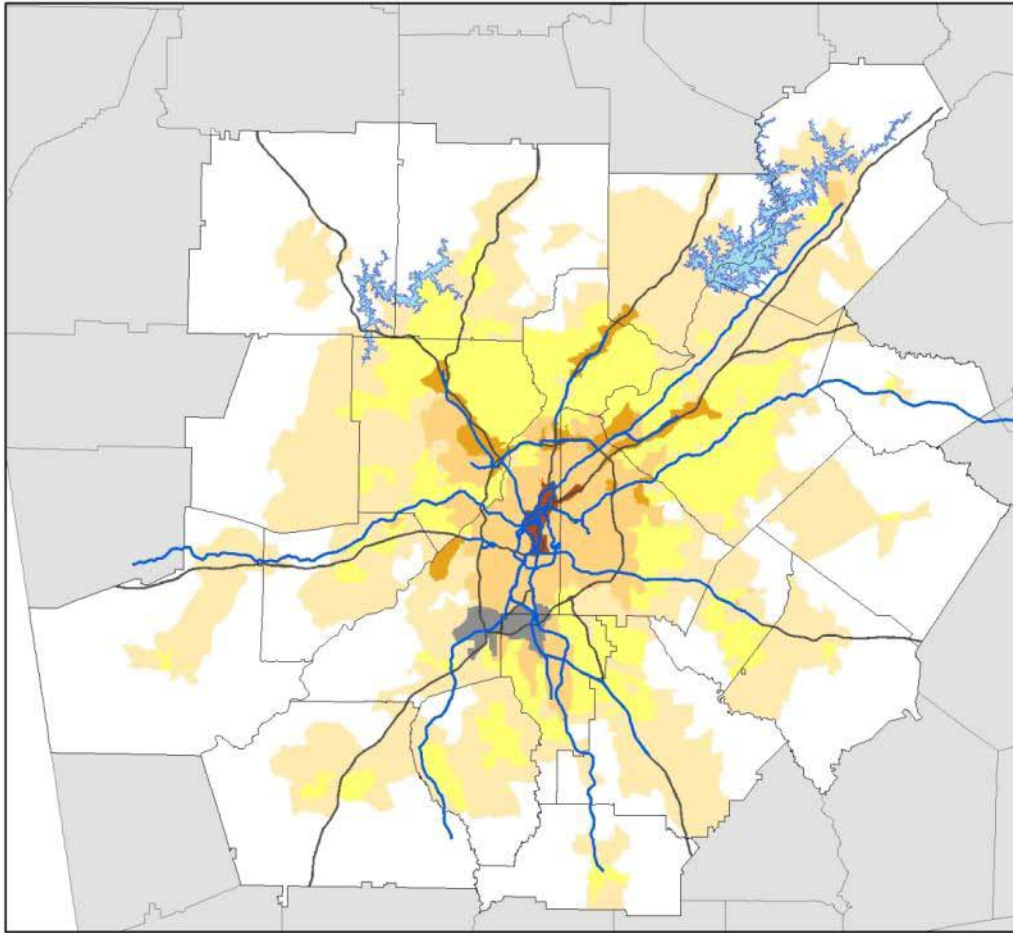
Maturing Neighborhoods





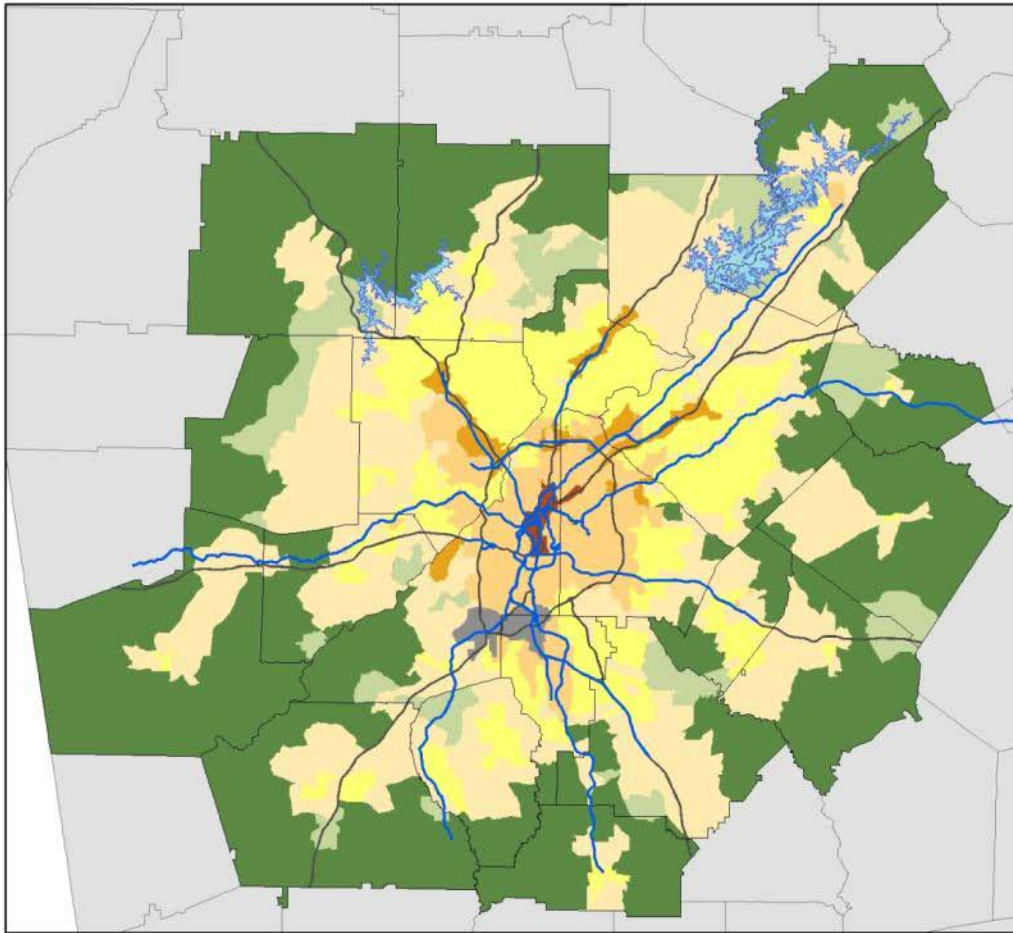
Established Suburbs





Developing Suburbs

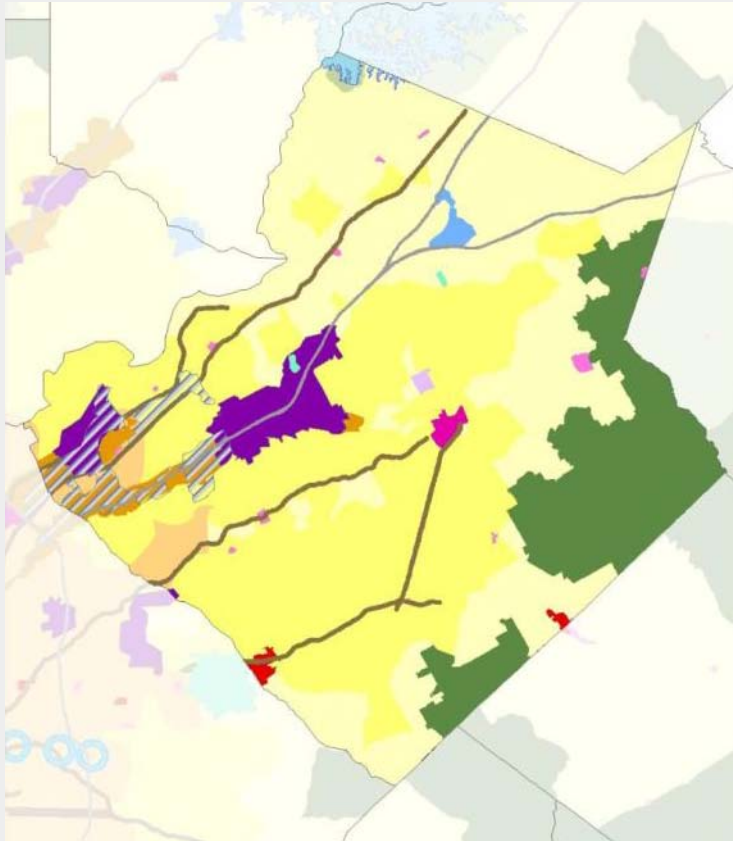




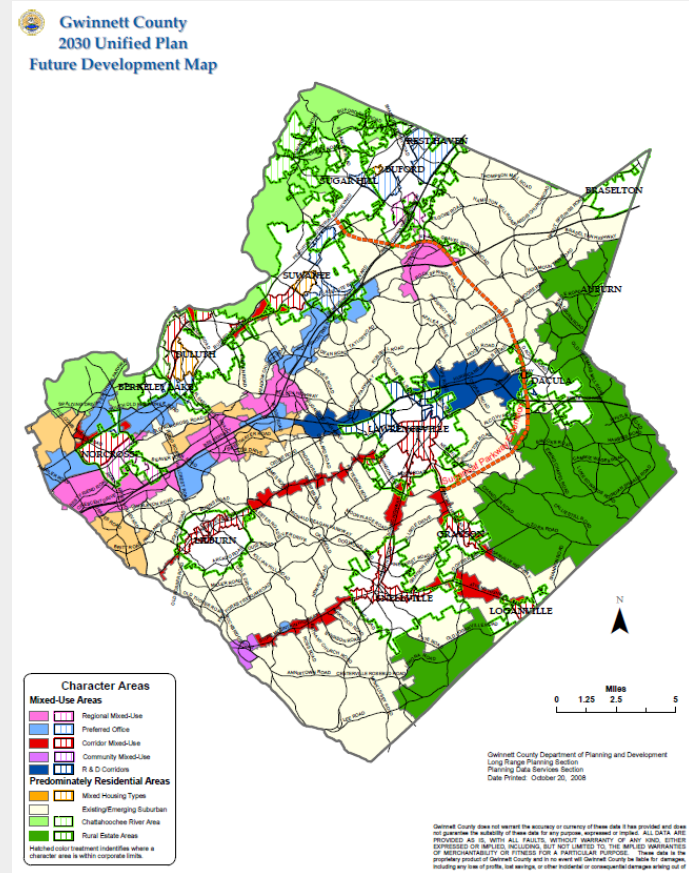
Developing Rural and Rural



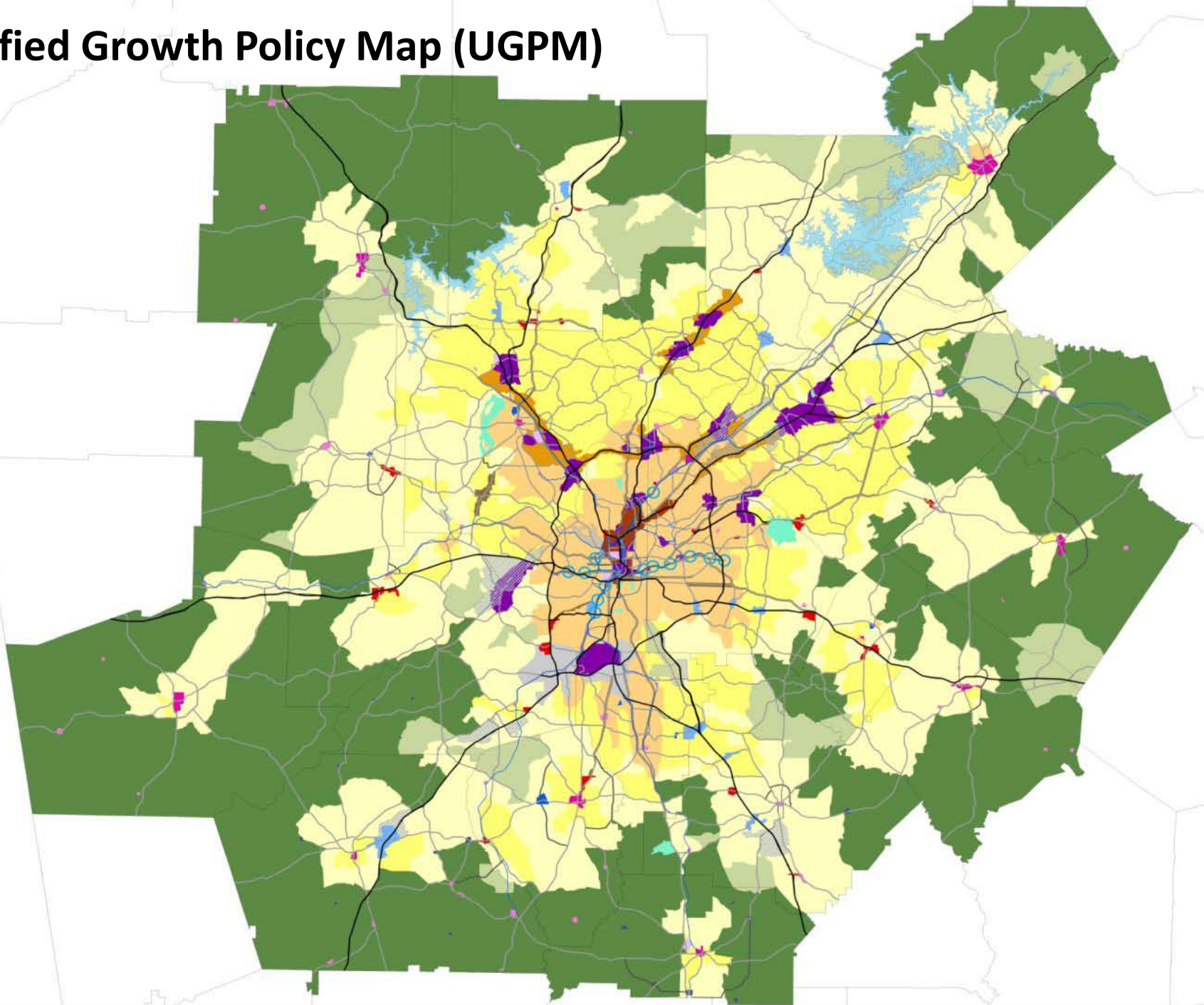
UGPM



Gwinnett County



Unified Growth Policy Map (UGPM)



Conclusions

1. Considering our knowledge of the region and Plan 2040 scenario work, recently adopted local plans with regional policy perform the best in the future.
2. Focusing on investments in existing communities and preserving rural areas while increasing density in job centers and transit areas is the right direction.
3. In the coming months, ARC committees and stakeholders will define characteristics of areas on the UGPM, implementation measures and standards.