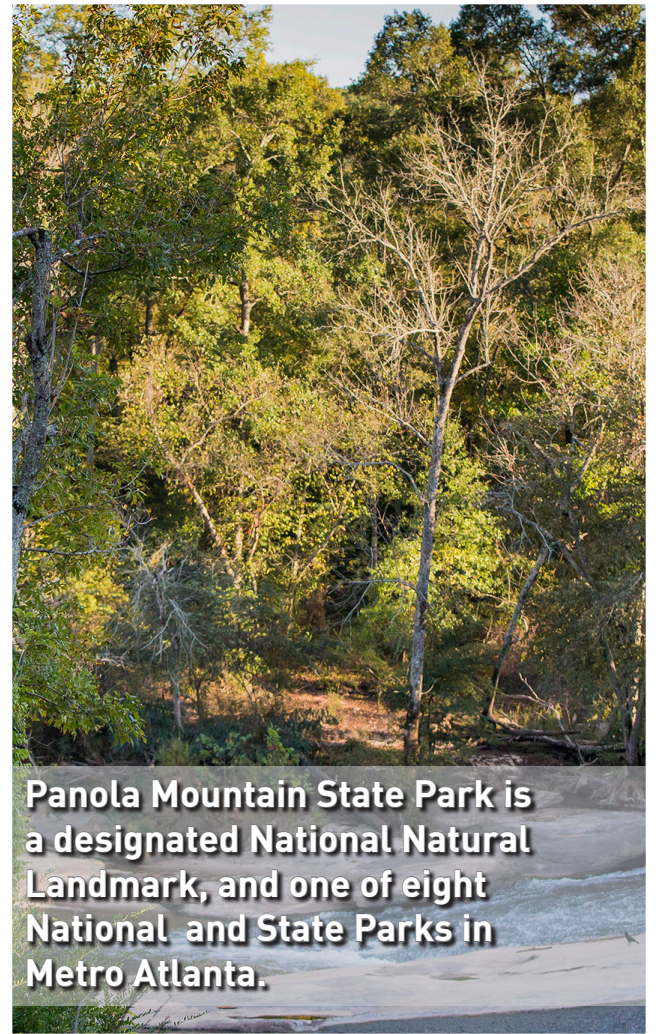


The Chattahoochee River, a regional source for recreation and drinking water, was designated the nation's first National Water Trail by the Secretary of the Interior.



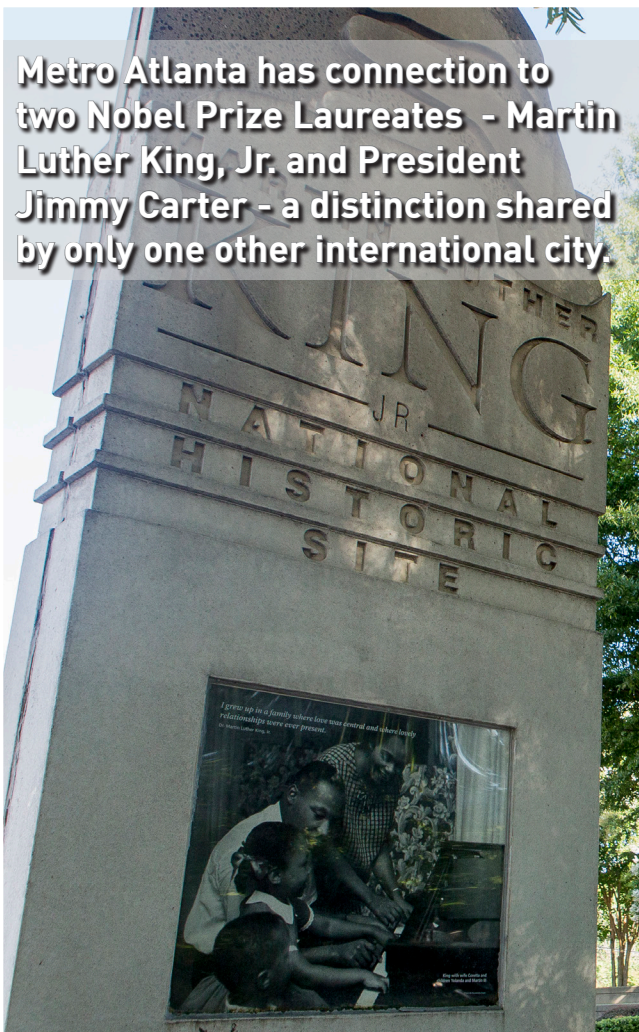
The Silver Comet Trail extends from Metro Atlanta to the Alabama State line, and is part of regional network that includes over 200 miles of multi-use path facilities.



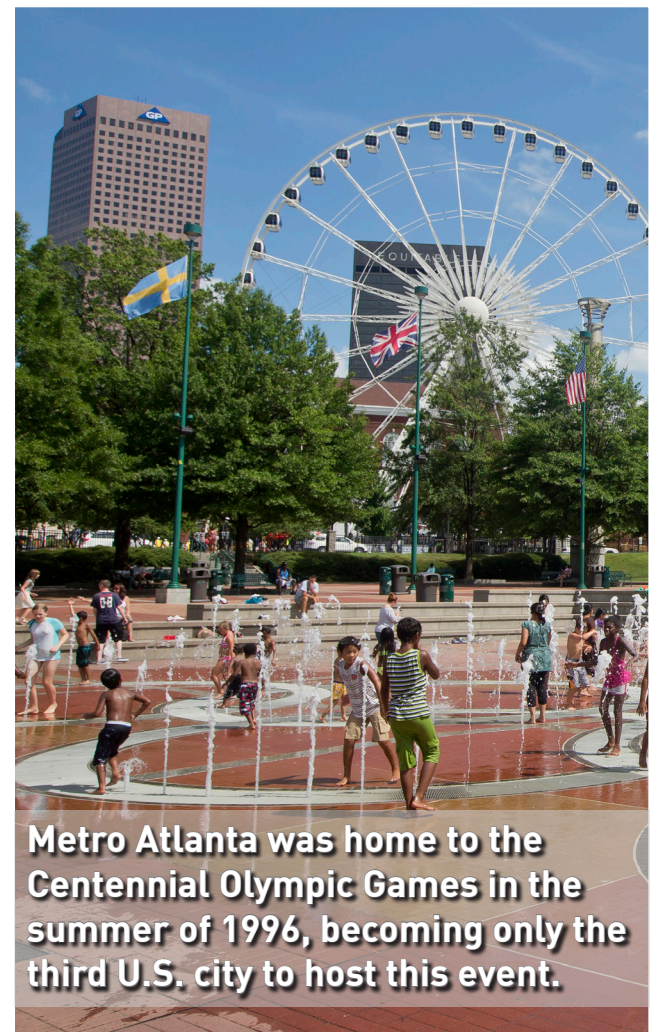
Panola Mountain State Park is a designated National Natural Landmark, and one of eight National and State Parks in Metro Atlanta.



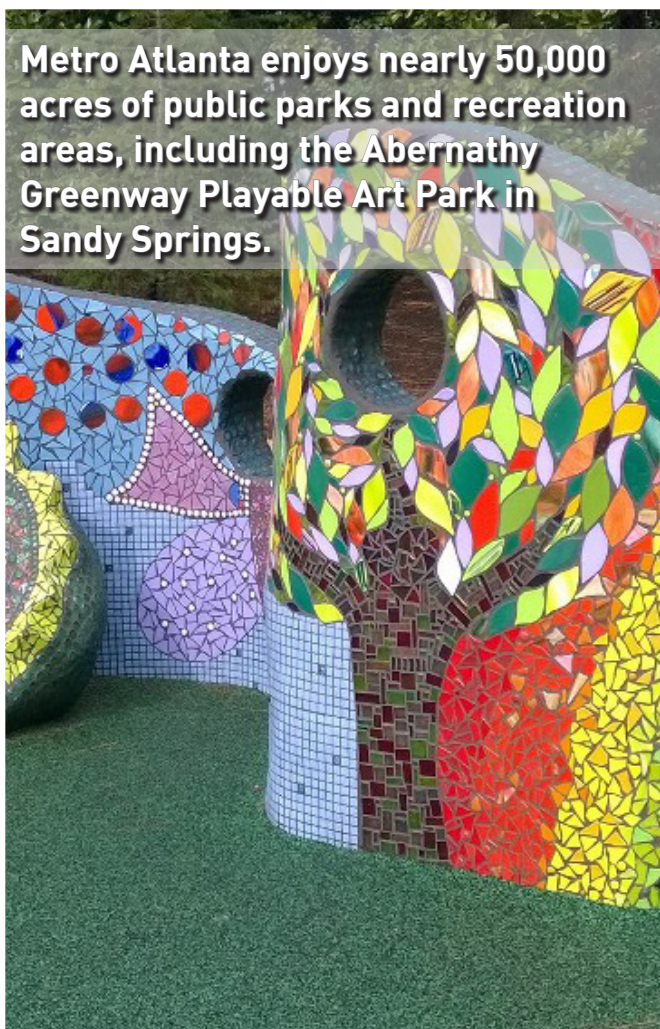
The Woodruff Arts Center, comprised of the Alliance Theater, the Atlanta Symphony Orchestra, & the High Museum of Art, attracts 1.2 million visitors annually.



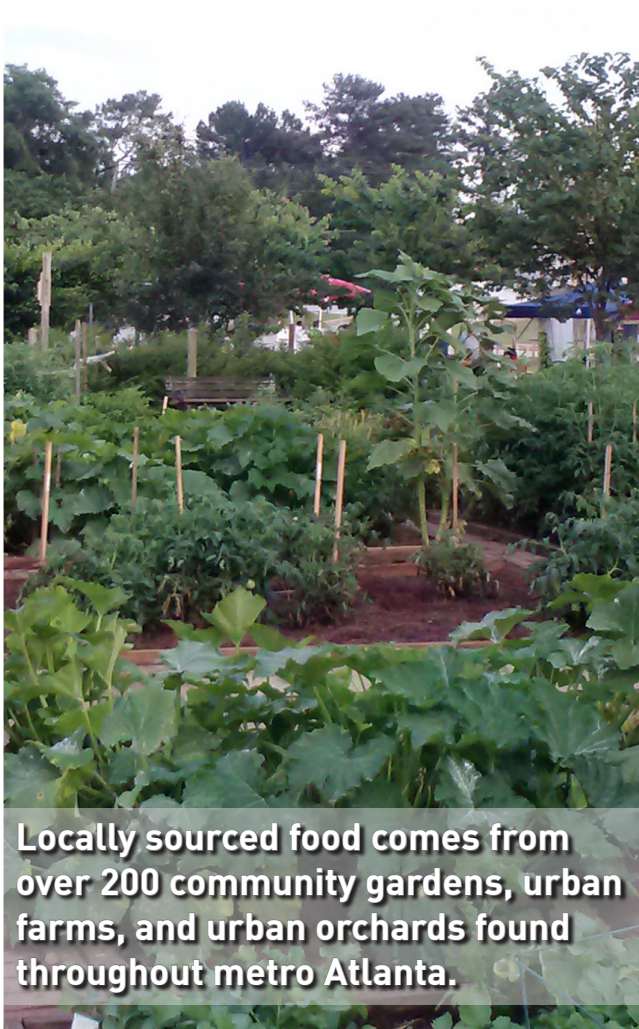
Metro Atlanta has connection to two Nobel Prize Laureates - Martin Luther King, Jr. and President Jimmy Carter - a distinction shared by only one other international city.



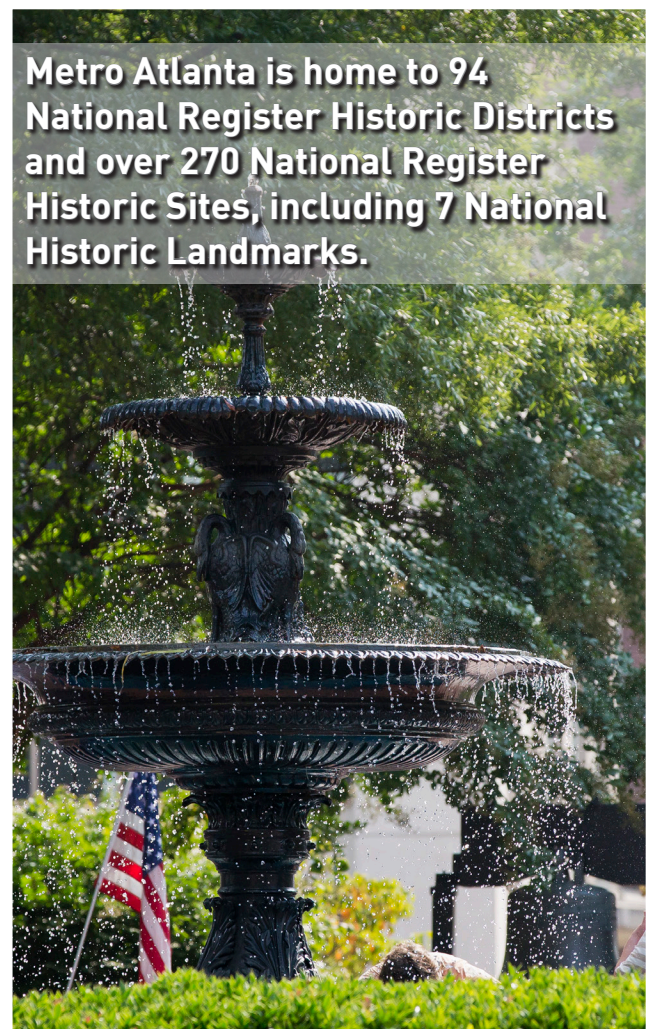
Metro Atlanta was home to the Centennial Olympic Games in the summer of 1996, becoming only the third U.S. city to host this event.



Metro Atlanta enjoys nearly 50,000 acres of public parks and recreation areas, including the Abernathy Greenway Playable Art Park in Sandy Springs.

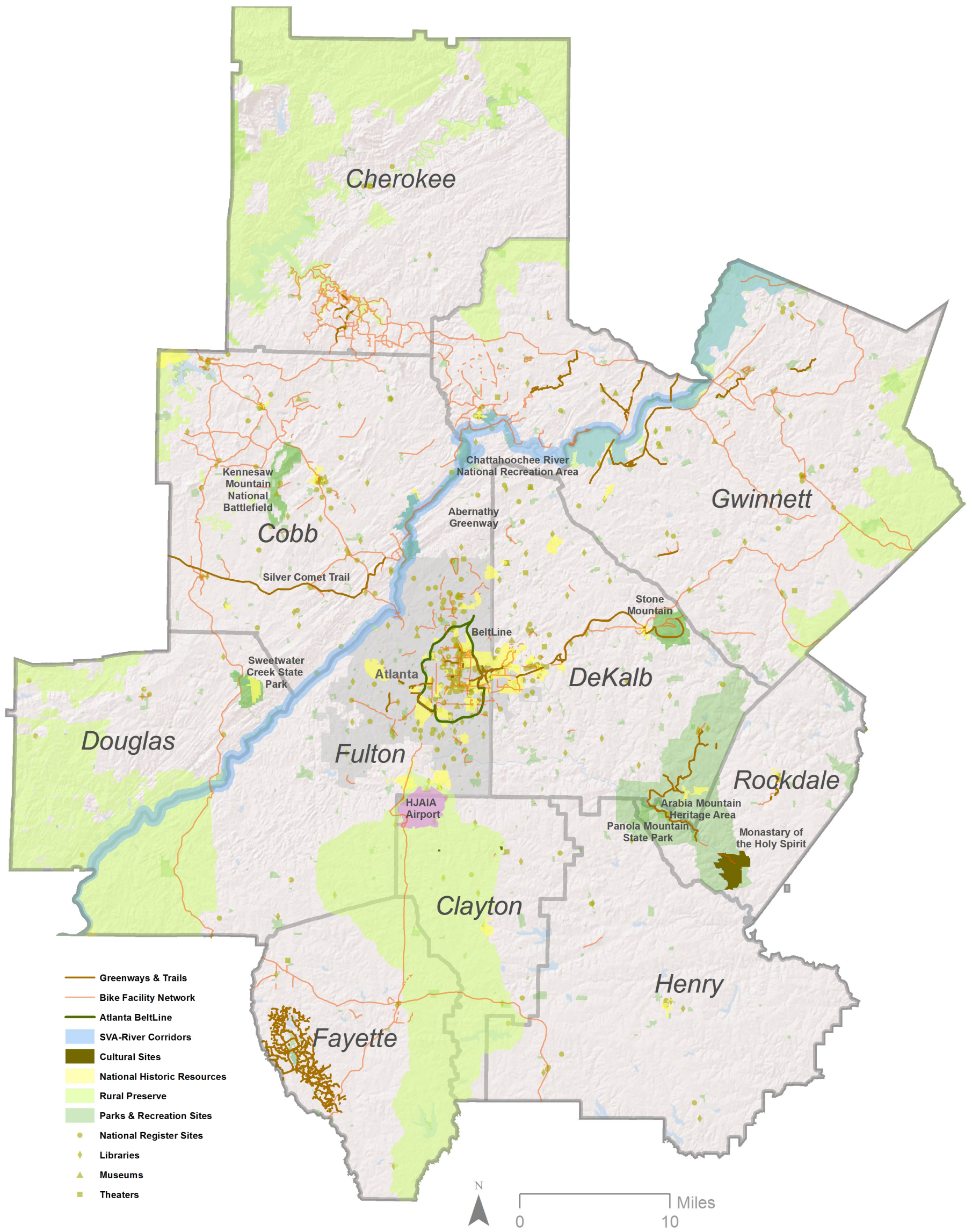


Locally sourced food comes from over 200 community gardens, urban farms, and urban orchards found throughout metro Atlanta.



Metro Atlanta is home to 94 National Register Historic Districts and over 270 National Register Historic Sites, including 7 National Historic Landmarks.

Metro Atlanta Connecting Culture



View from Stone Mountain, the world's largest known free-standing exposed granite.