

Joining the Conversation

Reddit, Maptime, Slack for GIS



March 2, 2016
Atlanta Regional GIS User Group
Chris Rice
Langdon Sanders



Reddit.com/r/GIS

reddit.com

How popular is reddit.com?

Alexa Traffic Ranks

How is this site ranked relative to other sites?



Global Rank ?

33

Rank in United States ?

9

/r/GIS

Total Subscribers

10,901

Subreddit Rank

3,721



Reddit.com/r/GIS



Esri has released Drone2Map for ArcGIS : Create orthomosaics, 3D meshes, and more, in ArcGIS from your drone-captured still imagery — in minutes esri.com
Submitted 1 day ago by [giseddit](#)
16 comments share



This awesome mission statement imgur.com
Submitted 4 days ago by [KnotHanSolo](#)
12 comments share



The US Census Bureau is hiring geographers. "Many" positions available in Suitland, MD usajobs.gov
Submitted 4 days ago by [2beinspired](#)
16 comments share



Google will tell you where the photo was taken using just pixels geowisdomness.com
Submitted 3 days ago by [openwebgis](#)
comment share



What Computer Games Taught Me About Urban Planning.And what they didn't. theatlantic.com
Submitted 3 days ago by [openwebgis](#)
2 comments share



Homeland Security Infrastructure Program (HSIP) data is now publicly available as Homeland Infrastructure Foundation-Level Data (HIFLD). Over 250 datasets available hifld-dhe-glii.opendata.arcgis.com
Submitted 5 days ago by [joeywas](#)
2 comments share



GIS in Excel youtube.com
Submitted 4 days ago by [milos_gregor](#)
1 comment share



I Just got a Student Trainee "Pathways" Job with the USFS self.gis
Submitted 1 day ago by [xacharyrobert](#)
10 comments share



QGIS 2.14 ESSEN has been released self.gis
Submitted 13 hours ago by [1447e211](#) - GIS Analyst
1 comment share



New GIS student having trouble finding data

SUBMIT NEW CONTENT

username password

remember me [reset password](#)

LOGIN

gis
10,894 readers, ~13 here



Welcome
/r/gis is a community dedicated to everything GIS (Geographic Information Systems). Please take a minute to read the FAQ below and search through our post history. If you don't find what you need jump in and submit new content.

What is GIS?
A geographic information system or geographical information system (GIS) is a system designed to capture, store, manipulate, analyze, manage, and present all types of spatial or geographical data. - [Wikipedia](#)

FAQ
What is the most common desktop software used?

- [ESRI ArcGIS](#) (paid, common)
- [QGIS](#) (free, open source)

Where can I find a job in GIS?

- [GIS Job Clearinghouse](#)
- [GeographyJobs](#)
- [stackoverflow careers](#)
- [Search /r/gis for "jobs"](#)
- [GIS Jobs](#)



Reddit.com/r/GIS

User submitted links and discussions

Ranked by votes

↑
37
↓



[Making Beautiful Maps: 4 part series - Photoshop & Illustrator - Adam Wilbert](#) vimeo.com

Submitted 5 months ago by [geobug](#) - GIS Analyst

[13 comments](#) [share](#)



Reddit.com/r/GIS

Comments work the same way

↑ [-] [Axxrael](#) - GIS Manager 3 points 15 days ago

↓ This is a very nice use of cesium. I'm impressed, especially with the easy iframe widget!

The only thing I found was that if you zoom in too far using 'Right Click' it will crash the instance. Could be problematic with datasets at a small scale when you are close to that point anyways. May be worthwhile to implement some form of zoom control when up close?

Also, it seems like the background is stuck on white. I didn't dig into it too much, so you may already have an option... but changing the style property `background` didn't change the color either. Hopefully when creating your instance you can choose a transparent background color for people with specific textures/patterns as backgrounds.

Still awesome, thank you for posting!

[permalink](#) [save](#) [report](#) [give gold](#) [reply](#)

↑ [-] [silvestro1](#) [S] 2 points 15 days ago

↓ Thanks for pointing out that crash during right click zoom! We've never seen that before but we put it on our issue list. About that background-color: It's an issue we're working on, it seems to happen if one of the globe-layers is a video. Did you try using a globe that just uses still images by any chance? In theory there the background should be transparent!

[permalink](#) [save](#) [parent](#) [report](#) [give gold](#) [reply](#)

↑ [-] [Axxrael](#) - GIS Manager 2 points 15 days ago

↓ Gotcha, I haven't made a custom globe yet. I was just playing around with your examples. They all seem to have white background as opposed to transparent. Good to see that transparency is an option.

Have you ever tried ingesting a GeorSS feed, just out of curiosity?

A common one for people to play around with is [USGS Earthquake ATOM feed](#). Ideally you could use the latitude/longitude supplied and easily set points to those locations and pull the relative information. You'd end up with a globe with updated points on the world's earthquake locations.

[permalink](#) [save](#) [parent](#) [report](#) [give gold](#) [reply](#)


↑ [-] [silvestro1](#) [S] 1 point 15 days ago


↓ That's an awesome idea! We'll definitely look into that. There should be some possibility to change the stroke size point to have different sizes.. Can't say if interactivity will be possible with the current system though, we'd have to see.





Reddit.com/r/GIS

Past Week past hour past 24 hours past month past year all time

- 

Esri has released Drone2Map for ArcGIS : Create orthomosaics, 3D meshes, and more, in ArcGIS from your drone-captured still imagery — in minutes esri.com
 Submitted 1 day ago by [gisedit](#)
 16 comments share
- 

This awesome mission statement imgur.com
 Submitted 4 days ago by [KnotHanSolo](#)
 12 comments share
- 

The US Census Bureau is hiring geographers. "Many" positions available in Suitland, MD usajobs.gov
 Submitted 4 days ago by [2beinspired](#)
 16 comments share
- 

Google will tell you where the photo was taken using just pixels geowisdomess.com
 Submitted 3 days ago by [openwebgis](#)
 comment share

search

SUBMIT NEW CONTENT

username password

remember me reset password

LOGIN

gis
 10,894 readers, ~13 here

Welcome


/r/gis is a community dedicated to everything GIS (Geographic Information Systems). Please take a minute to read the FAQ below and search through our post history. If you


- 


Homeland Security Infrastructure Program (HSIP) data is now publicly available as Homeland Infrastructure Foundation-Level Data (HIFLD). Over 250 datasets available
hifld-dhs-gii.opendata.arcgis.com
 Submitted 5 days ago by [joeywas](#)
 2 comments share

A geographic information system designed to manipulate, analyze, and display spatial data.

[Wikipedia](#)

- 

GIS in Excel youtube.com
 Submitted 4 days ago by [milos_gregor](#)
 1 comment share
- 

I Just got a Student Trainee "Pathways" Job with the USFS self:gis
 Submitted 1 day ago by [kacharyrobert](#)
 10 comments share
- 

QGIS 2.14 ESSEN has been released self:gis
 Submitted 13 hours ago by [f447e211](#) - GIS Analyst
 1 comment share

FAQ

What is the most common desktop software used?

- ESRI ArcGIS (paid, common)
- QGIS (free, open source)

Where can I find a job in GIS?

- GIS Job Clearinghouse
- GeographyJobs
- stackoverflow careers
- Search */r/gis* for "jobs"
- GIS Jobs



Reddit.com/r/GIS



Homeland Infrastructure Foundation - Level Data (HIFLD)

My Activity

DHS.GOV

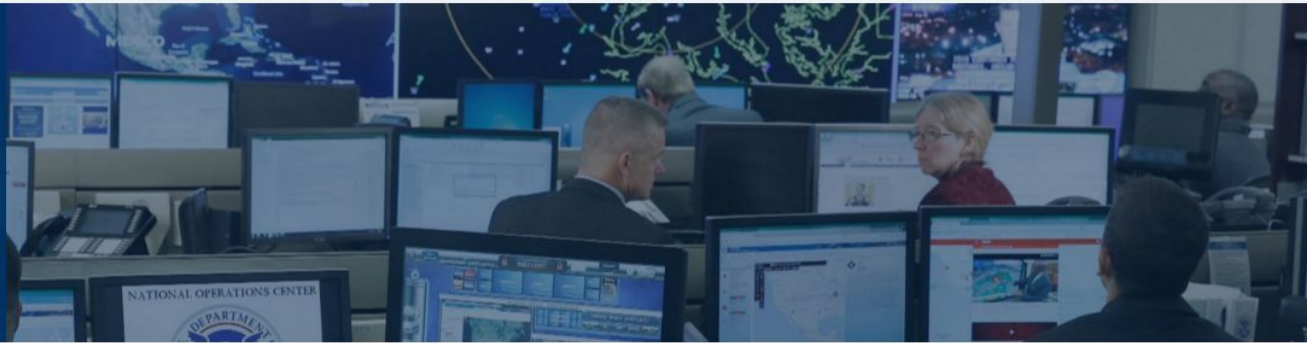
DHS.GII

HIFLD



HIFLD Open Data

This site provides National foundation-level geospatial data within the open public domain that can be useful to support community preparedness, resiliency, research, and more. The data is available for download as CSV, KML, Shapefile, and accessible via web services to support application development and data visualization.



Find Data

Explore All Data

Explore Categories

Agriculture

Borders

Boundaries

Chemicals

Commercial

Communications

Education

Emergency Services



Reddit.com/r/GIS

Related Subreddits

[DatalsBeautiful](#) | [Geography](#) | [GeoSpatial](#) | [Maps](#)

[Map Projects](#) | [Basins](#) | [National Geographic](#)

[Ask GIS](#) | [GIS Jobs](#) | [CAD](#) | and many more . . .



twitter - [@MaptimeATL](https://twitter.com/MaptimeATL)

github - <https://github.com/maptime/atlanta>

meetup - <https://www.meetup.com/MaptimeATL/>

What is Maptime?

an open learning environment

for all levels and degrees of knowledge

mapping tutorials, workshops

ongoing projects with a shared goal

independent/collaborative work time.



What is Maptime?

an open learning environment

for all levels and degrees of knowledge

mapping tutorials, workshops

ongoing projects with a shared goal

independent/collaborative work time



What is Maptime?

an open learning environment
for all levels and degrees of knowledge

mapping tutorials, workshops

ongoing projects with a shared goal

independent/collaborative work time

What is Maptime?

an open learning environment
for all levels and degrees of knowledge
mapping tutorials, workshops

ongoing projects with a shared goal

independent/collaborative work time

What is Maptime?

an open learning environment
for all levels and degrees of knowledge
mapping tutorials, workshops
ongoing projects with a shared goal

independent/collaborative work time

Examples

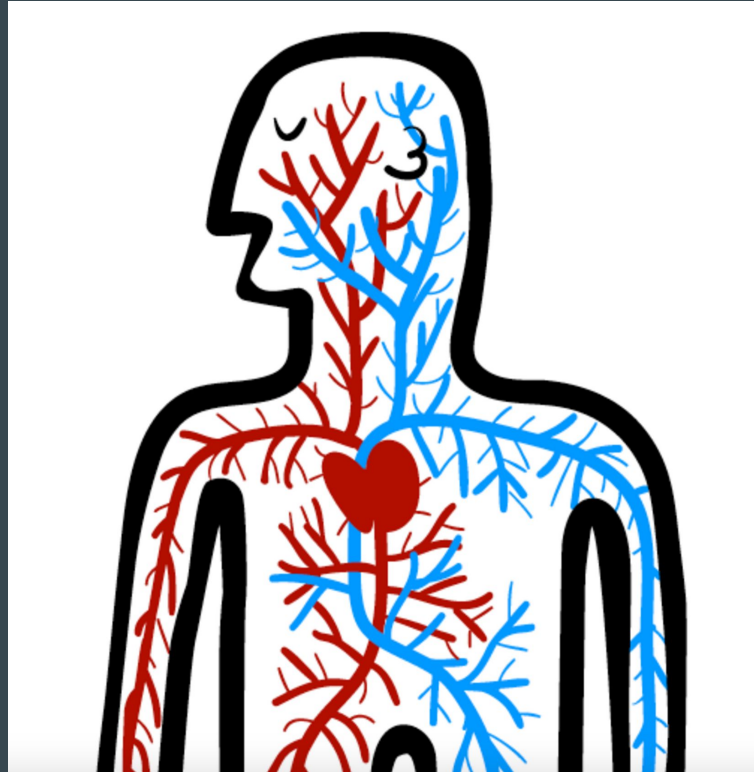
- Maptime Boston, *Intro to QGIS*
 - <http://maptimeboston.github.io/qgis-101/#0>
- Maptime SF, *Anatomy of a Web Map*
 - <http://maptime.io/anatomy-of-a-web-map/>
- Maptime Atlanta, *Realism in Cartography*
 - <https://goo.gl/P2xh2O>

Intro to QGIS - Maptime Boston



Anatomy of a Web Map

Maptime San Francisco



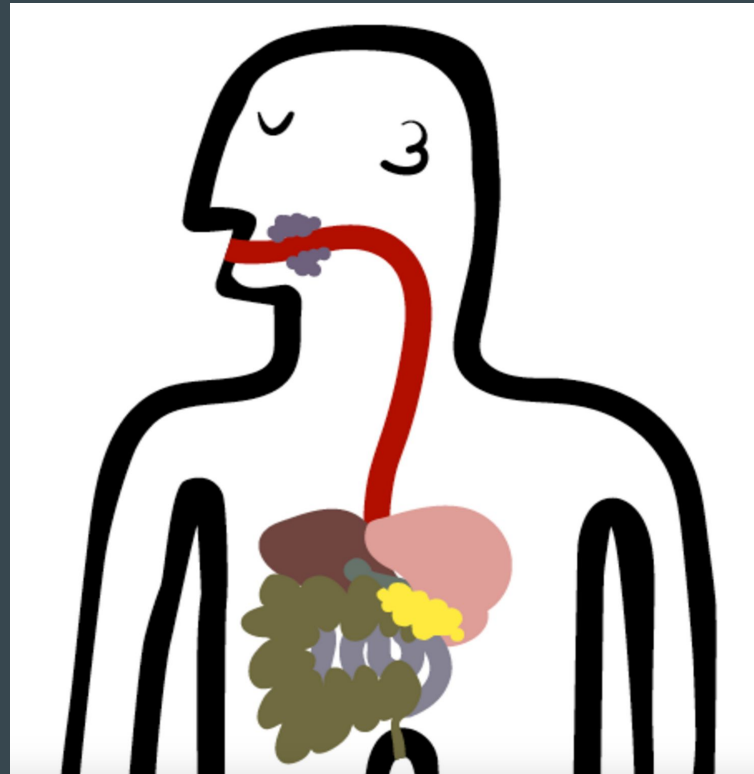
Anatomy of a Web Map

Maptime San Francisco



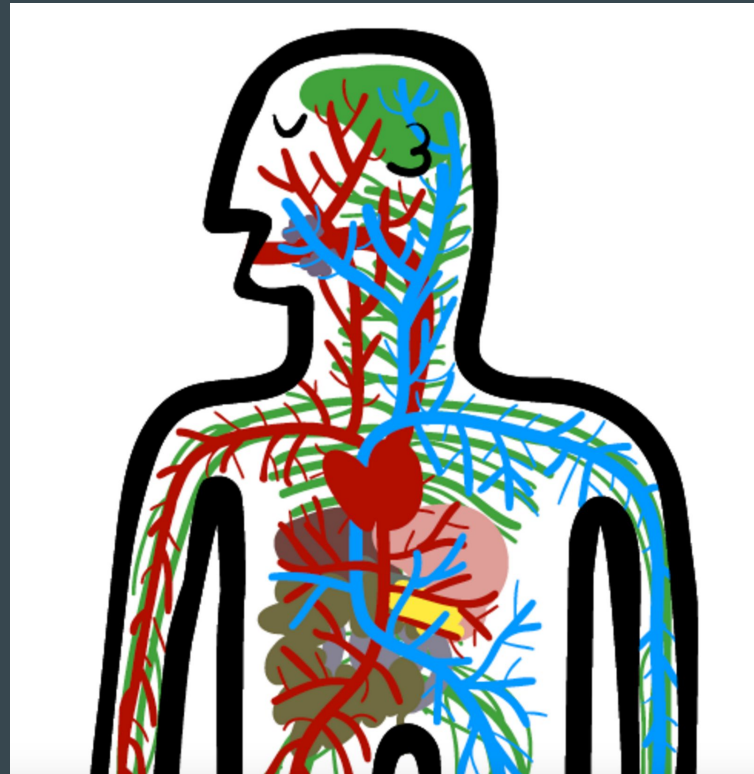
Anatomy of a Web Map

Maptime San Francisco



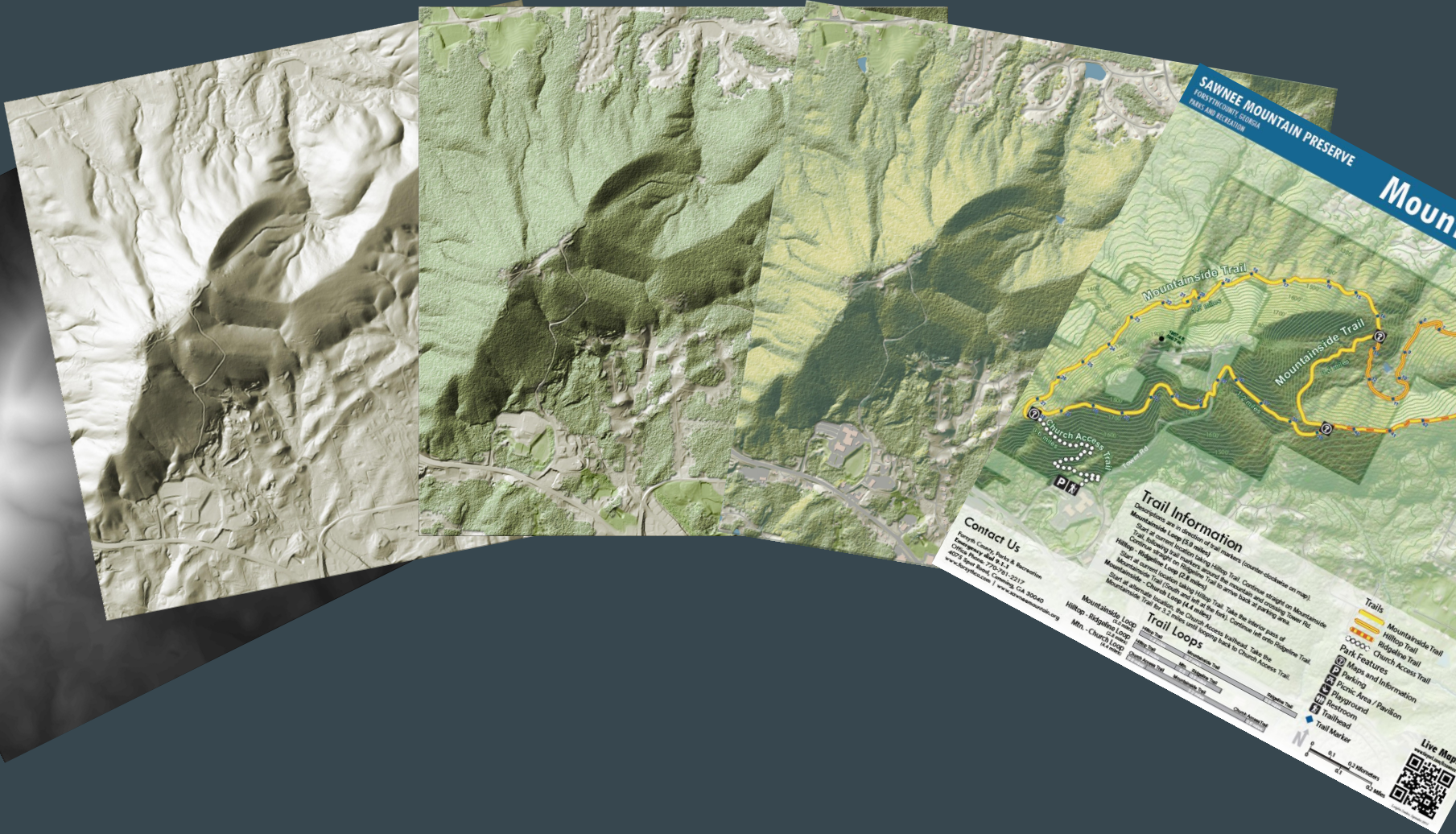
Anatomy of a Web Map

Maptime San Francisco



Realism in Cartography

Maptime Atlanta



The Spatial Community



slack.com

TheSpatialCommunity.com

Slack Features

- **Channels**

- #arcgis-web, #geocoding, #job, #map-app-design, #cartography-designs, #python, . . .

- **Direct Messages**

- Private conversations, or tag @name

- **Drag & Drop Sharing of Files**

- Images, PDFs, documents, and spreadsheets can be dropped right into Slack.

- **Mobile apps**

- Fully native apps for iOS, Android, Windows, OS X, Ubuntu, and Fedora.

- **Extensible**

- Plug-ins for Google Docs, Dropbox, Google Hangouts, GitHub, and many many **many** more!

Slack Features

- **Channels**

- #arcgis-web, #geocoding, #job, #map-app-design, #cartography-designs, #python, . . .

- **Direct Messages**

- Private conversations, or tag @name

- **Drag & Drop Sharing of Files**

- Images, PDFs, documents, and spreadsheets can be dropped right into Slack.

- **Mobile apps**

- Fully native apps for iOS, Android, Windows, OS X, Ubuntu, and Fedora.

- **Extensible**

- Plug-ins for Google Docs, Dropbox, Google Hangouts, GitHub, and many many **many** more!

Slack Features

- **Channels**
 - #arcgis-web, #geocoding, #job, #map-app-design, #cartography-designs, #python, . . .
- **Direct Messages**
 - Private conversations, or tag @name
- **Drag & Drop Sharing of Files**
 - Images, PDFs, documents, and spreadsheets can be dropped right into Slack.
- **Mobile apps**
 - Fully native apps for iOS, Android, Windows, OS X, Ubuntu, and Fedora.
- **Extensible**
 - Plug-ins for Google Docs, Dropbox, Google Hangouts, GitHub, and many many **many** more!

Slack Features

- **Channels**

- #arcgis-web, #geocoding, #job, #map-app-design, #cartography-designs, #python, ...

- **Direct Messages**

- Private conversations, or tag @name

- **Drag & Drop Sharing of Files**

- Images, PDFs, documents, and spreadsheets can be dropped right into Slack.

- **Mobile apps**

- Fully native apps for iOS, Android, Windows, OS X, Ubuntu, and Fedora.

- **Extensible**

- Plug-ins for Google Docs, Dropbox, Google Hangouts, GitHub, and many many **many** more!

Slack Features

- **Channels**

- #arcgis-web, #geocoding, #job, #map-app-design, #cartography-designs, #python, ...

- **Direct Messages**

- Private conversations, or tag @name

- **Drag & Drop Sharing of Files**

- Images, PDFs, documents, and spreadsheets can be dropped right into Slack.

- **Mobile apps**

- Fully native apps for iOS, Android, Windows, OS X, Ubuntu, and Fedora.

- **Extensible**

- Plug-ins for Google Docs, Dropbox, Google Hangouts, GitHub, and many many **many** more!

langdon.sanders

MORE UNREADS ↑

- # arcgis-web
- # cartodb
- # cartography-designs
- # countermapping
- # data-sources
- # events
- # geocoding
- # github-repos
- # humanitarian
- # job
- # leafletjs
- # map-app-design
- # mapbox
- # maptime
- # n00bs
- # openstreetmap
- # politics
- # python
- # remote-sensing
- # general
- # random

About channels... View archived channels...

esc

Browse all 68 channels

New channel

Search channels

Sort by Channel Name & Membership ▾

discussion about various data collection platforms

gdal-ogr

Created by *aborruso* on October 11th, 2015
To talk about a Geospatial Data Abstraction Library

geo-routing

Created by *zia* on September 12th, 2015
Channel dedicated for PgRouting, network graph libraries (eg. BGL, NetworkX), graph theory and anything related to routing-problems.

geoprocessing


Created by *vtcraghead* on July 8th, 2015
A channel to cover geographic data munging in all its forms - postgis, python, turfjs, etc.

geoserver


Created by *pankas87* on July 22nd, 2015

gistribe

Created by *todd* on October 21st, 2015
To increase collaboration with the GIStribe communiyt

The Spatial Com...  langdon.sandersMORE UNREADS 

arcgis-web
 # cartodb
 # cartography-designs
 # countermapping
 # data-sources
 # events
 # geocoding
 # github-repos
 # humanitarian
 # job
 # leafletjs
 # map-app-design
 # mapbox
 # maptime
 # n00bs
 # openstreetmap
 # politics
 # python
 # remote-sensing
 # general
 # random

#python  188 Search**savgemat** 12:12 PM

basically

it's using arcpy, so i dumpy arcpy.GetMessages()

**steveoh** 12:14 PMsomething like <https://github.com/agrc/agrc.python/blob/master/agrc/logging.py#L39-L49>

GitHub

[agrc/agrc.python](#)

agrc.python - AGRC python package

**jblairpdx** 12:16 PM

For scheduled tasks, I generally wrap the script(s) in a shell script that can take care of notifications. Keeps the scripts themselves from carrying much off-subject code. Plus we have Exchange email with asinine network policies here, so my Python email options are just wrapping other

**savgemat** 12:16 PM 

Yep, and looks like you've got your traceback in there too.

**steveoh** 12:17 PM[@jblairpdx](#): these are scheduled tasks not cron jobs 😊

but i'd be curious to take a peek at what your shell scripts look like (edited)

**jblairpdx** 12:21 PM

I'm just using the task scheduler in Windows.

My shell scripts are PowerShell scripts that call each sub-script in turn. I do cheat a bit by having the Python scripts report status to a database. I have a separate script that reads the status table & do the appropriate response.

**steveoh** 12:21 PM

oh powershell

**ted_chapin** 12:55 PM

The Spatial Com... ▼ 🔔

● langdon.sanders

CHANNELS (68) ⊕

- # analysis
- # announcements
- # **arcgis**
- # **arcgis-desktop**
- # arcgis-web
- # cartodb
- # **cartography-designs**
- # countermapping
- # data-sources
- # events
- # geocoding
- # github-repos
- # humanitarian
- # job
- # leafletjs
- # map-app-design
- # mapbox
- # maptime
- # n00bs
- # openstreetmap
- # politics
- # python
- # remote-sensing
- # general
- # random

#cartography-designs ▼



themapsmith 11:14 AM

I'm getting people mixed up, @stvno you're the one doing the isochronic world travel stuff?

<http://gizmodo.com/this-map-shows-just-how-fast-travel-is-in-2016-1751082418>

Gizmodo

This Map Shows Just How Fast Travel Is in 2016

Last year, we published a map that showed just how long travel took in 1914. Now, there's a similar map which shows how dramatically things



vincents 11:17 AM

He does, but I think he realised it was already done !



stvno 11:35 AM

@themapsmith: indeed, and yes I read that post as well



themapsmith 11:35 AM ☆

They beat ya to it? 😞 (edited)



stvno 11:35 AM

yeah



well, they beat me to publishing, I had the map between christmas and new year, but hadn't put it online yet

Visit these other communities



CartoTalk 
A Public Forum for Cartography and Design

GeoNet The Esri Community

GIS.Stackexchange.com



Geographic Information Systems