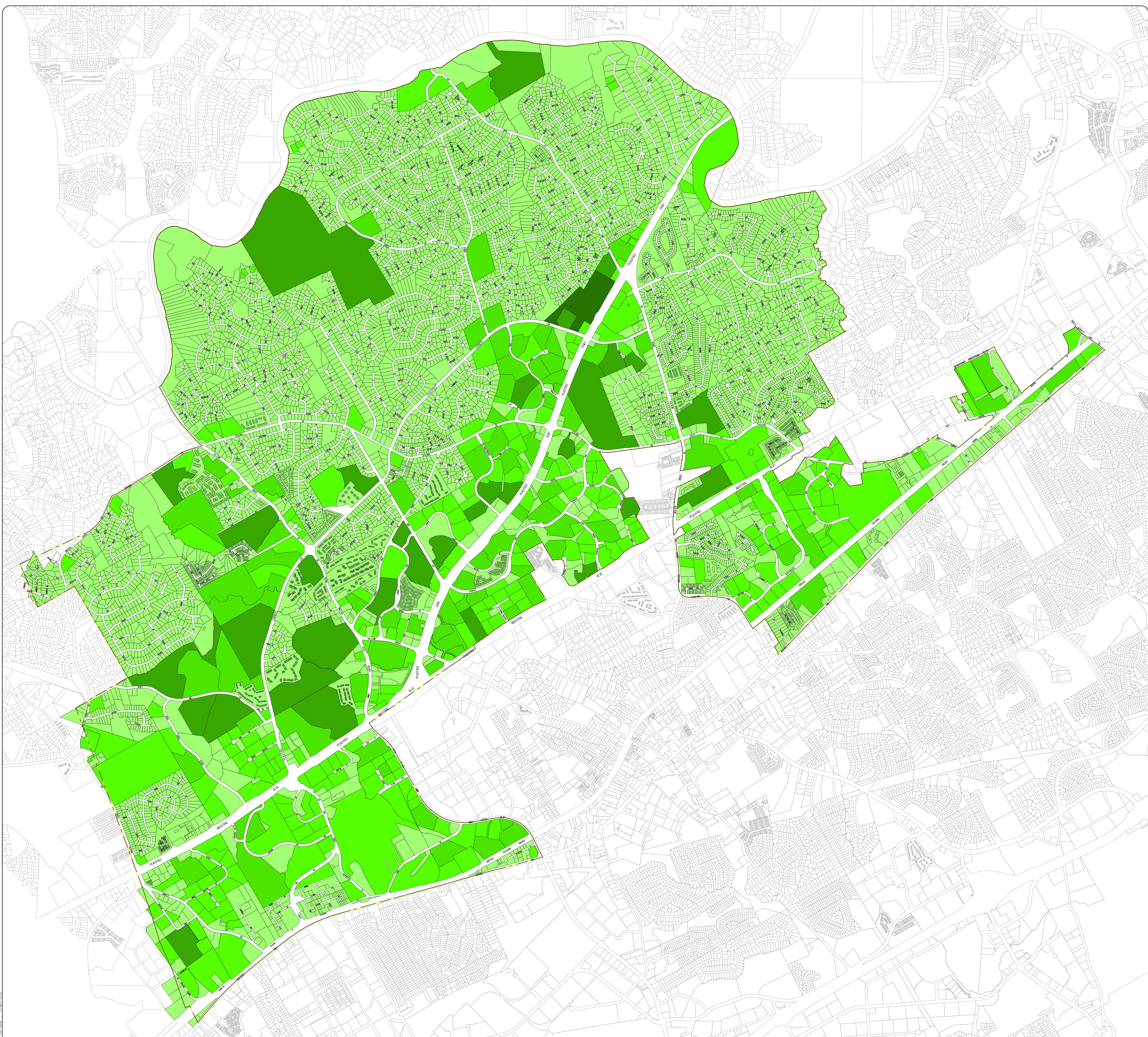


Real Estate Values

May, 2015



Legend

Tier	Value Range:	Total Value:	Parcels:	Mean Value:
Tier One	\$ 0 - \$ 1,179,000	\$ 2,951,615,600	10935	\$ 269,924
Tier Two	\$ 1,179,001 - \$ 4,144,000	\$ 609,585,100	291	\$ 2,094,794
Tier Three	\$ 4,144,001 - \$ 10,650,000	\$ 541,833,400	87	\$ 6,227,970
Tier Four	\$ 10,650,001 - \$ 35,485,700	\$ 503,614,300	33	\$ 15,261,036
Tier Five	\$ 35,485,701 - \$ 85,000,000	\$ 85,000,000	1	\$ 85,000,000

Classification Statistics:

1. Total Parcels = 11347
2. Minimum Value = \$ 0
3. Maximum Value = \$ 85,000,000
4. Total Value = \$ 4,691,648,400
5. Mean Value = \$ 413,470
6. Median Value = \$ 255,000

Statistical Notes:

1. Real estate values provided by the Gwinnett County Tax Assessor's Office, dated December 31, 2014.
2. The Jenks' statistical data classification method was used to calculate the groupings.

LEGAL NOTIFICATIONS:

1. THIS MAP IS THE PROPERTY OF THE CITY OF PEACHTREE CORNERS, GEORGIA. THE USE OF THIS MAP IS GRANTED SOLELY UPON THE CONDITION THAT THE MAP WILL NOT BE SOLD, COPIED, OR PRINTED FOR RESALE WITHOUT THE EXPRESS WRITTEN PERMISSION OF THE CITY. THIS MAP IS A PROPRIETARY PRODUCT OF PEACHTREE CORNERS, GEORGIA. IN NO EVENT WILL THE CITY AND/OR ITS GOVERNING CONSULTANTS BE LIABLE FOR DAMAGES, INCLUDING ANY LOSS OF PROFITS, LOSS OF BUSINESS, OR OTHER INCIDENTAL OR CONSEQUENTIAL DAMAGES ARISING FROM THE USE OF OR INABILITY TO USE THIS MAP.

2. THIS MAP IS A GRAPHICAL REPRESENTATION OF DATA OBTAINED FROM A VARIETY OF SOURCES SUCH AS AERIAL PHOTOGRAPHS, RECORDED DEEDS, PLATS, ENGINEERING DRAWINGS, AND/OR OTHER PUBLIC RECORDS OR DATA. THE CITY OF PEACHTREE CORNERS DOES NOT WARRANT THE ACCURACY OR CURRENCY OF THE MAP PROVIDED AND DOES NOT GUARANTEE THE SATISFACTORY OF THE MAP FOR ANY PURPOSE, EXPRESSED OR IMPLIED.

MAP PRODUCTION

1. THIS MAP WAS COMPILED FROM RECORDS THAT HAVE BEEN FILED WITH THE CITY OF PEACHTREE CORNERS AND/OR OTHER AGENCIES BY VARIOUS PARTIES. NEITHER THE CITY NOR ITS GOVERNING CONSULTANTS PREPARED SAID RECORDS OR MADE ANY REPRESENTATIONS OR ASSUME ANY RESPONSIBILITIES FOR THE ACCURACY OF THE INFORMATION CONTAINED ON THIS MAP.

DATA SOURCES:

1. CERTAIN BASE DATA PROVIDED BY GWINNETT COUNTY IN ACCORDANCE WITH AN AGREEMENT WITH THE CITY OF PEACHTREE CORNERS. Gwinnett County does not warrant the accuracy or currency of these data. If the provided data does not guarantee the accuracy of these data for any purpose, expressed or implied. ALL DATA ARE PROVIDED AS IS, WITH ALL FAULTS, WITHOUT WARRANTY OF ANY KIND, EITHER EXPRESSED OR IMPLIED, INCLUDING BUT NOT LIMITED TO, THE IMPLIED WARRANTIES OF MERCHANTABILITY OR FITNESS FOR A PARTICULAR PURPOSE. These data is the proprietary product of Gwinnett County and in no event will Gwinnett County be liable for damages, including any loss of profits, loss of business, or other incidental or consequential damages arising out of the use of or inability to use these data.

2. THE CITY OF PEACHTREE CORNERS HAS MADE CERTAIN ENHANCEMENTS TO THE ABOVE MENTIONED DATA AS PART OF THE CITY'S GIS MAPPING PROGRAM.

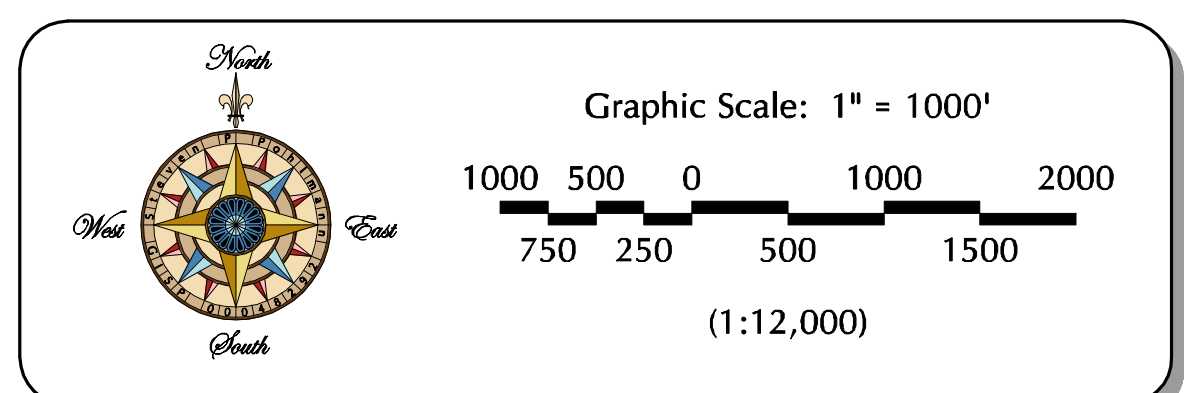
REVISIONS:

1. THIS MAP MAY BE REVISED PERIODICALLY BY THE CITY OF PEACHTREE CORNERS. SHOULD THE USER FIND CONDITIONS OTHER THAN SHOWN, THE CITY WOULD APPRECIATE YOUR INPUT. PLEASE COPY THE AREA IN QUESTION AND YOUR PROPOSED REVISION AND/OR CORRECTION AND SEND THE INFORMATION TO THE CITY FOR CONSIDERATION.

COPYRIGHT:

1. NO PART OF THIS PUBLICATION MAY BE REPRODUCED, STORED IN A RETRIEVAL SYSTEM, OR TRANSMITTED IN ANY FORM OR BY ANY MEANS, ELECTRONIC, MECHANICAL, PHOTO-COPYING, RECORDING, OR OTHERWISE, WITHOUT THE PRIOR WRITTEN PERMISSION OF THE CITY OF PEACHTREE CORNERS, GEORGIA. THE UNAUTHORIZED REPRODUCTION OR DISTRIBUTION OF THIS COPYRIGHTED WORK IS ILLEGAL. ORIGINAL COPYRIGHT INFRINGEMENT INCLUDING INFRINGEMENT WITHOUT MONETARY GAIN IS INVESTIGATED BY THE FBI AND IS PUNISHABLE BY UP TO FIVE (5) YEARS IN FEDERAL PRISON AND A FINE OF \$50,000.

TM AND COPYRIGHT © 2015 CITY OF PEACHTREE CORNERS, GEORGIA
ALL RIGHTS RESERVED



Map Edition:
Version: 2015.05.01
Map Publication Date:
May 1, 2015

Map Sheet:
1
Sheet 1 of 1