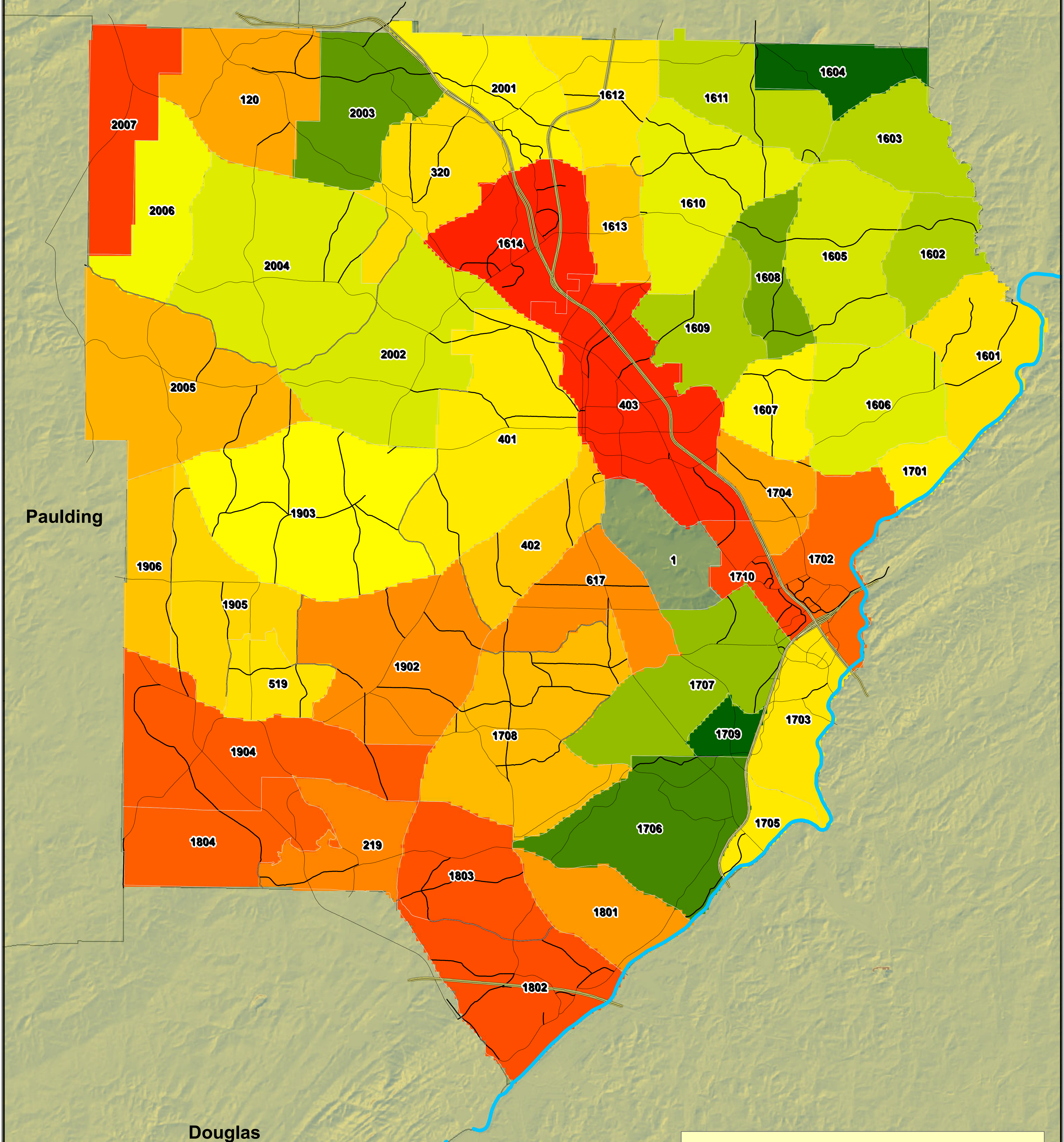


A Change Analysis using 2013 & 2014 Residential Sales Data for Cobb County



Legend

Residential Property Sales Value

- Highest Change (Green)
- Lowest Change (Red)
- Residential Neighborhoods (White outline)

PROJECT OBJECTIVES: Determine the number of real estate purchases in Cobb County per residential neighborhood. Also, perform a change analysis to show low and high frequencies of properties bought within residential properties.

RESULTS: The trend from 2013 to 2014 is obvious. From 2013 to 2014, the number of properties sold decreased. The neighborhoods showing the greatest changes are green and the lowest changes red.

SOFTWARE, DATA, AND METHODS

SOFTWARE: ArcGIS 10.2. and IAS World

DATA: Cobb County Parcels, 2013 Sales, 2014 Sales, Residential Neighborhoods

METHODS for ANALYSIS: Feature to Point, Add Join, Calculate Field, Feature to Point, Feature to Raster, Frequency, Intersect, Raster Calculator, Select

Disclaimer

It is the user's responsibility to verify any information derived from the GIS data before making any decisions or taking any actions based on the information. Cobb County is not liable for any errors in the GIS data. This includes errors of omission, commission, errors concerning the content of the data, and relative and positional accuracy of the data.

