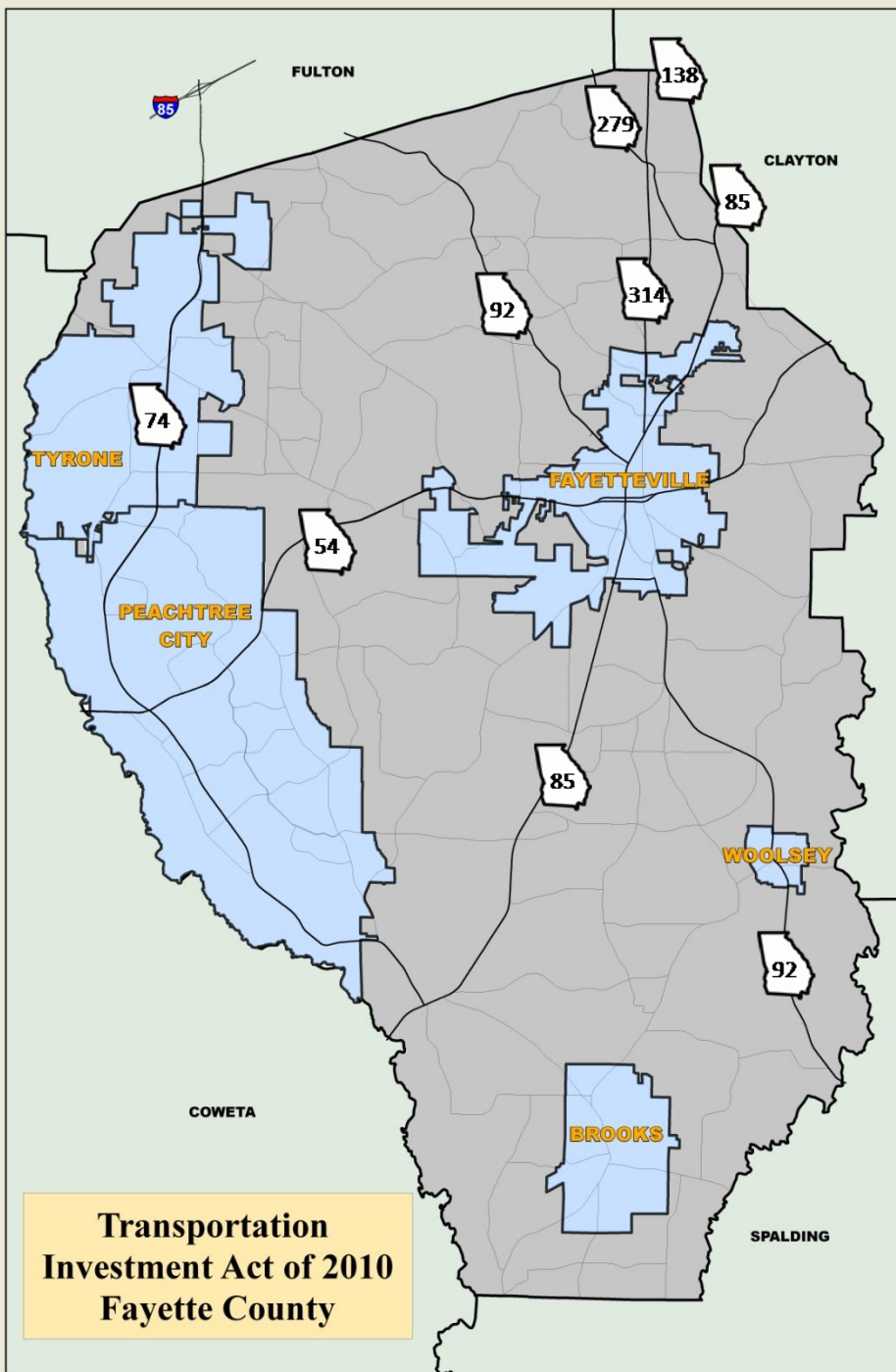


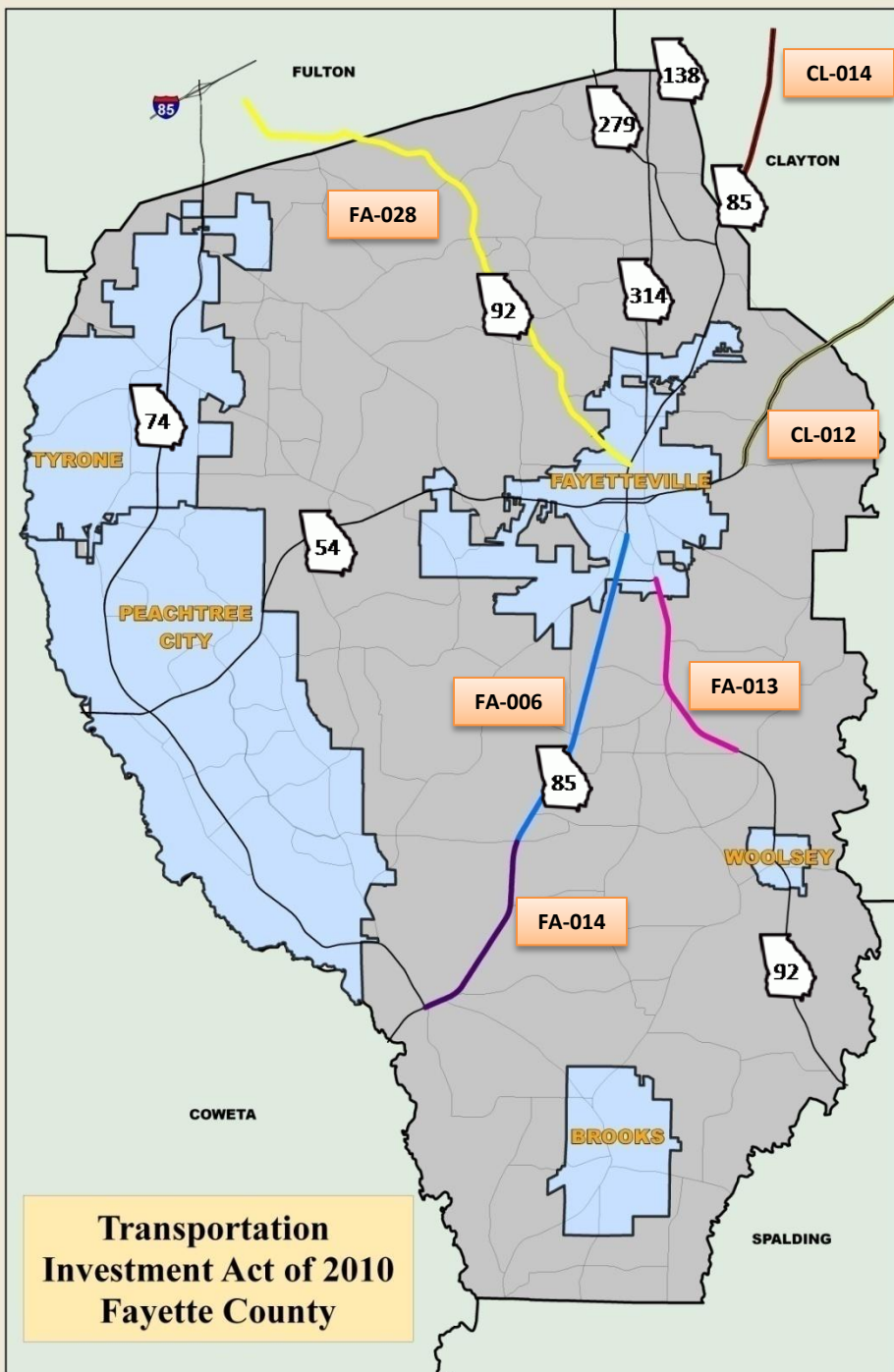
Transportation Investment Act 2010



Transportation Investment Act 2010

State Road Improvements

- **FA-006** SR 85 – widening
- **FA-014** SR 85 – operational improvements
- **CL-014** SR 85 – widening
- **FA-013** SR 92 – widening
- **FA-028** SR 92 – operational improvements
- **CL-012** SR 54 – widening



SR 85 at Ramah Road/SR 92 in Fayetteville proposed widening from 2 to 4 lanes



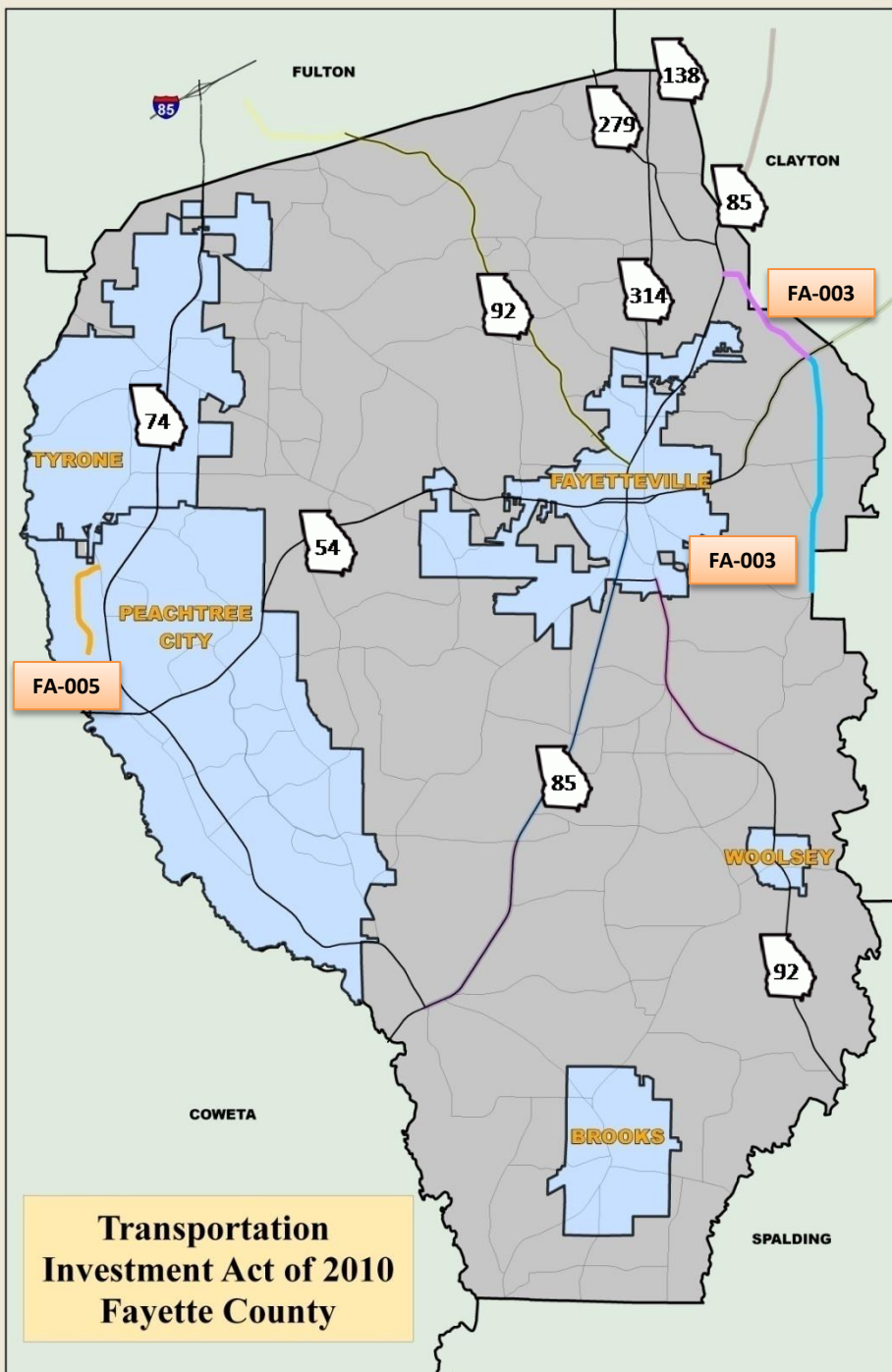
Transportation Investment Act 2010

State Road Improvements

- **FA-006** SR 85 – widening
- **FA-014** SR 85 – operational improvements
- **CL-014** SR 85 – widening
- **FA-013** SR 92 – widening
- **FA-028** SR 92 – operational improvements
- **CL-012** SR 54 – widening

Congestion Relief/ New Capacity in Peachtree City and Fayetteville

- **FA-005** MacDuff Parkway extension – new capacity
- **FA-003** East Fayetteville Bypass 1 (South) – new capacity
- **FA-004** East Fayetteville Bypass 2 (North) – operational improvements



MacDuff Parkway at SR 54

extend MacDuff to SR 74 with bridge over railroad



Transportation Investment Act 2010

State Road Improvements

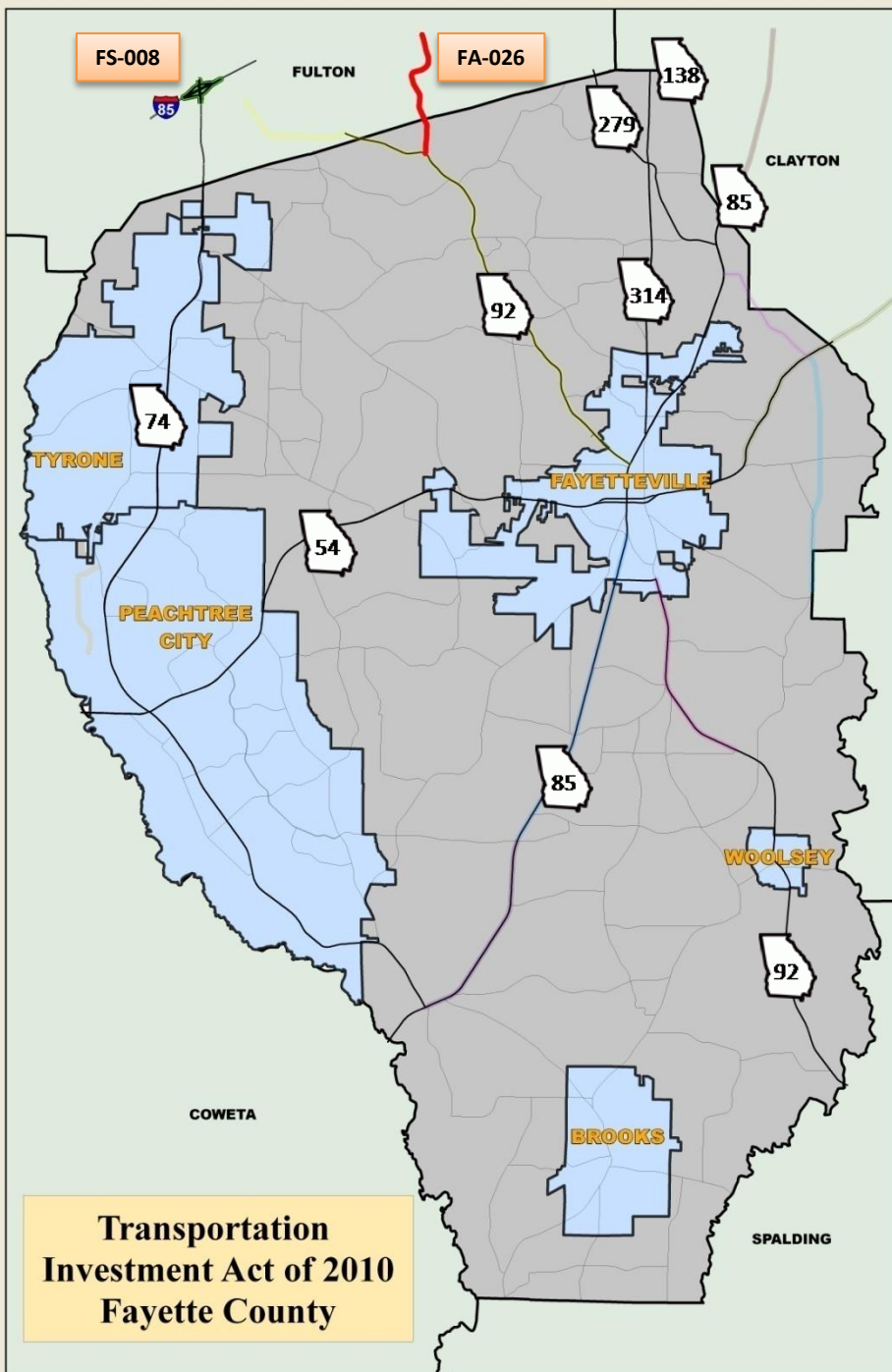
- **FA-006** SR 85 – widening
- **FA-014** SR 85 – operational improvements
- **CL-014** SR 85 – widening
- **FA-013** SR 92 – widening
- **FA-028** SR 92 – operational improvements
- **CL-012** SR 54 – widening

Congestion Relief/ New Capacity in Peachtree City and Fayetteville

- **FA-005** MacDuff Parkway extension – new capacity
- **FA-003** East Fayetteville Bypass 1 (South) – new capacity
- **FA-004** East Fayetteville Bypass 2 (North) – operational improvements

Improved Interstate Access

- **FS-008** I-85 South at SR 74 – interchange improvements
- **FA-026** SR 138 in Fulton County to SR 92 – new capacity and/or operational improvements



Transportation
Investment Act of 2010
Fayette County

I-85 and SR 74 (looking south on SR 74) interchange improvements



Transportation Investment Act 2010

State Road Improvements

- **FA-006** SR 85 – widening
- **FA-014** SR 85 – operational improvements
- **CL-014** SR 85 – widening
- **FA-013** SR 92 – widening
- **FA-028** SR 92 – operational improvements
- **CL-012** SR 54 – widening

Congestion Relief/ New Capacity in Peachtree City and Fayetteville

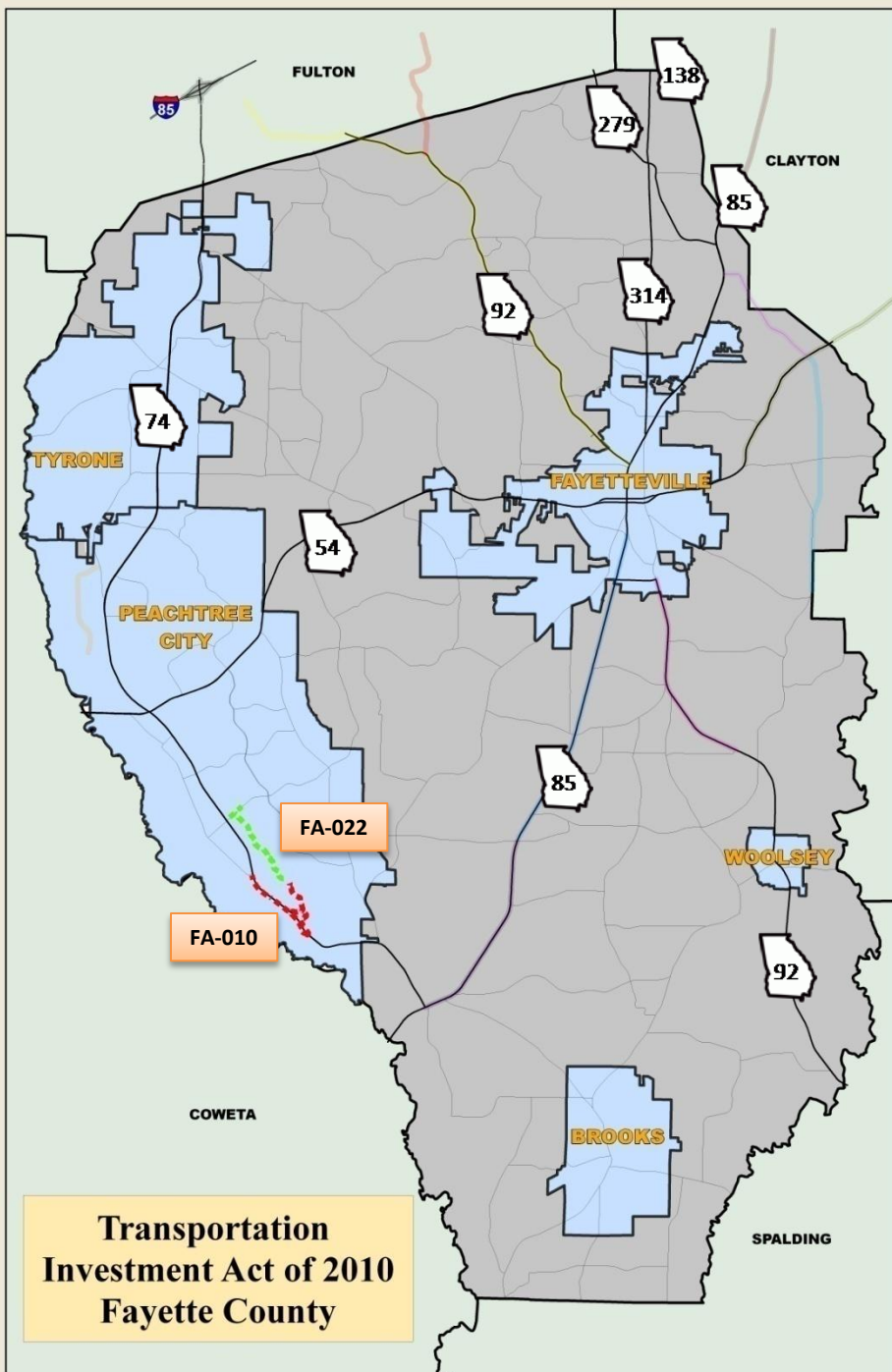
- **FA-005** MacDuff Parkway extension – new capacity
- **FA-003** East Fayetteville Bypass 1 (South) – new capacity
- **FA-004** East Fayetteville Bypass 2 (North) – operational improvements

Improved Interstate Access

- **FS-008** I-85 South at SR 74 – interchange improvements
- **FA-026** SR 138 in Fulton County to SR 92 – new capacity and/or operational improvements

Peachtree City Multiuse Path Projects

- **FA-010** South Industrial Park – new path construction
- **FA-022** Southeast Industrial Park - new path construction



**Transportation
Investment Act of 2010
Fayette County**

Transportation Investment Act 2010

State Road Improvements

- **FA-006** SR 85 – widening
- **FA-014** SR 85 – operational improvements
- **CL-014** SR 85 – widening
- **FA-013** SR 92 – widening
- **FA-028** SR 92 – operational improvements
- **CL-012** SR 54 – widening

Congestion Relief/ New Capacity in Peachtree City and Fayetteville

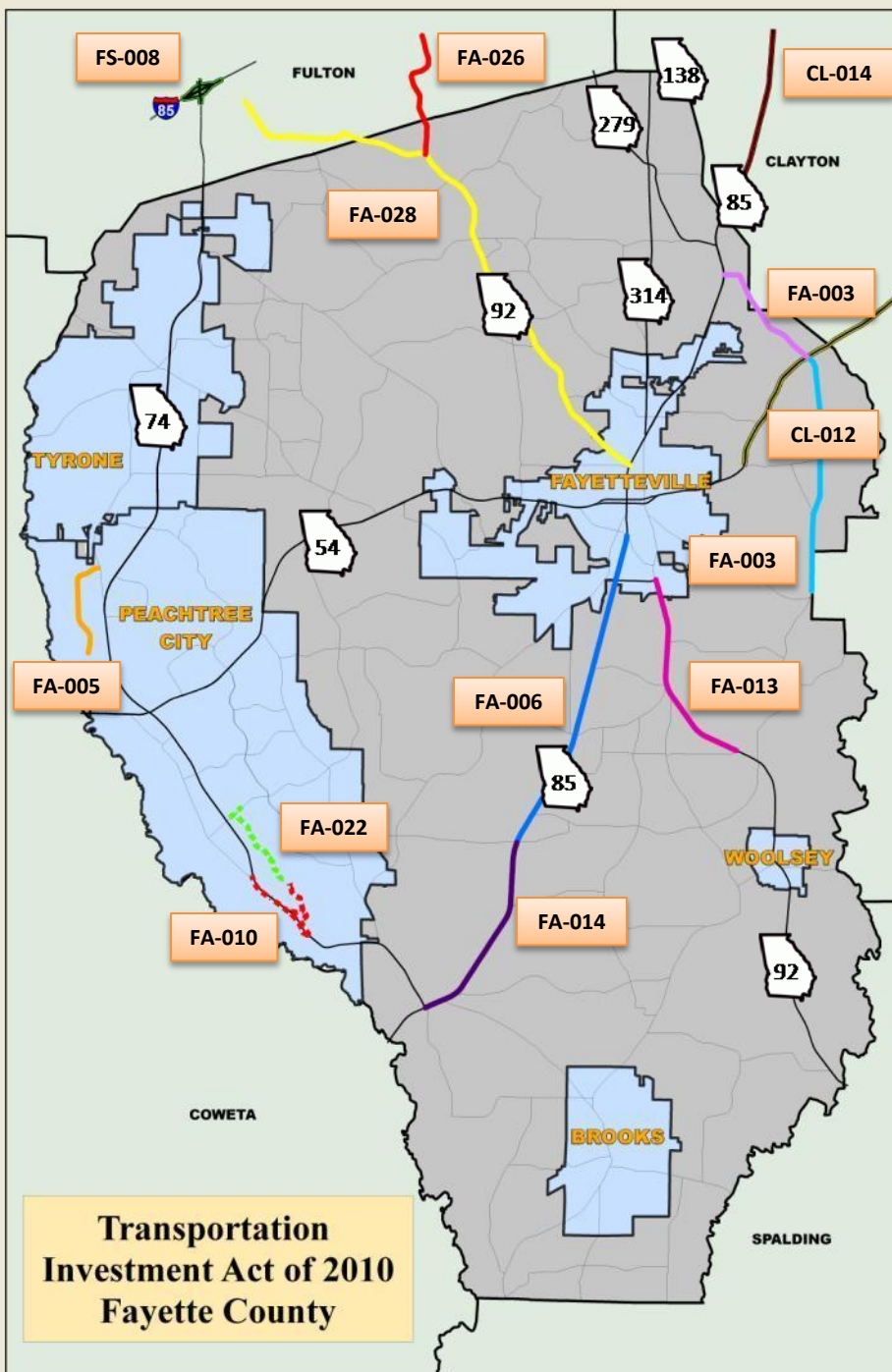
- **FA-005** MacDuff Parkway extension – new capacity
- **FA-003** East Fayetteville Bypass 1 (South) – new capacity
- **FA-004** East Fayetteville Bypass 2 (North) – operational improvements

Improved Interstate Access

- **FS-008** I-85 South at SR 74 – interchange improvements
- **FA-026** SR 138 in Fulton County to SR 92 – new capacity and/or operational improvements

Peachtree City Multiuse Path Projects

- **FA-010** South Industrial Park – new path construction
- **FA-022** Southeast Industrial Park - new path construction



Transportation
Investment Act of 2010
Fayette County