

Atlanta Regional Commission
Board Meeting
March 28, 2012

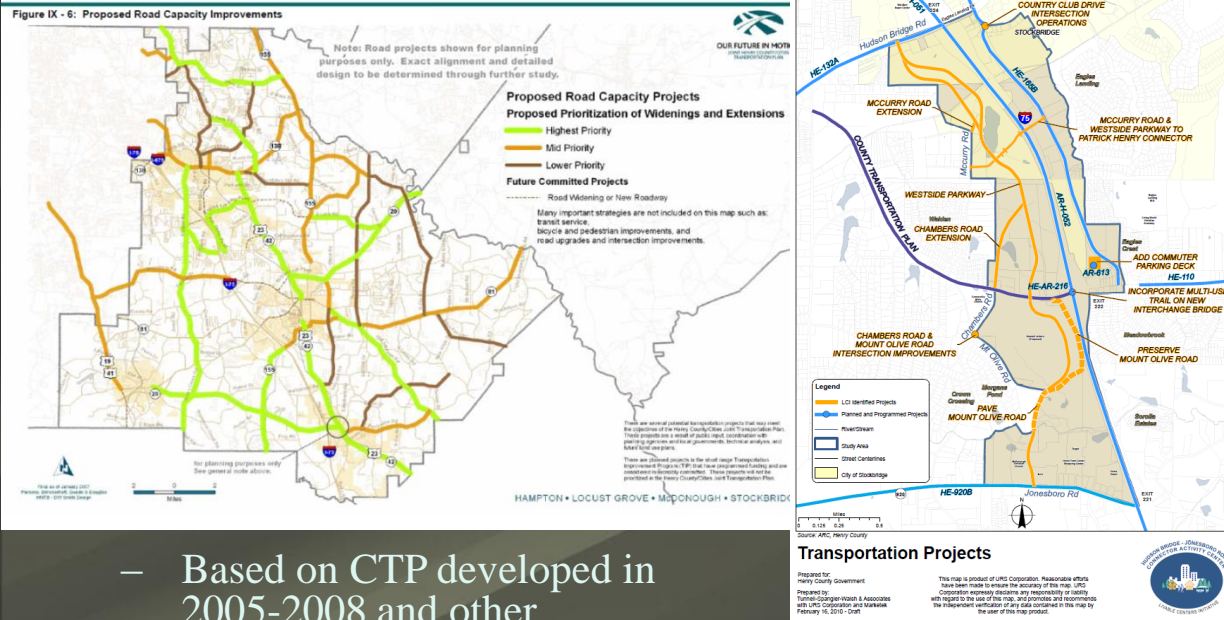
Transportation Investment Act: HENRY COUNTY PROJECTS

Chairman Elizabeth "B.J." Mathis
Henry County Board of
Commissioners

**The Transportation
Investment Act can
inject critical funds to
maintain our region's
competitive advantage.**



Project Submittals



- Based on CTP developed in 2005-2008 and other significant projects
- Input sought from Henry County and the four cities prior to the initial call for projects.



“Draft Constrained Project List
& the Residents Benefit”

US 23/SR 42 (from SR 138 to SR 155) Widening

(City of Stockbridge, McDonough and Unincorporated Henry County)



SR 155 (from Bill Gardner Parkway to Racetrack Road)

(City of Locust Grove, McDonough, Hampton and Unincorporated Henry County)



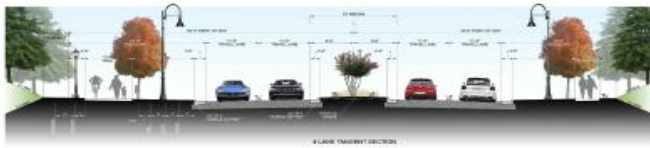
- Currently, over 18,000 daily vehicle trips on a 2-lane road
- 30,000 daily trips are expected by the year 2022.

Western Parallel Connector from Hudson Bridge Road to SR 920 (Jonesboro Road)

(City of Stockbridge, McDonough, and Unincorporated Henry County)

- Reduce trips on I-75 from Jonesboro Road to Hudson Bridge Road in 2020 by about 4,000 trips per day. Once constructed 12,000 AADT in 2018 and 31,000 AADT in 2038
- Alternative for local trips
- Promotes Economic Development
- Serves as an alternative when Interstate 75 is congested and/or a major incident has occurred

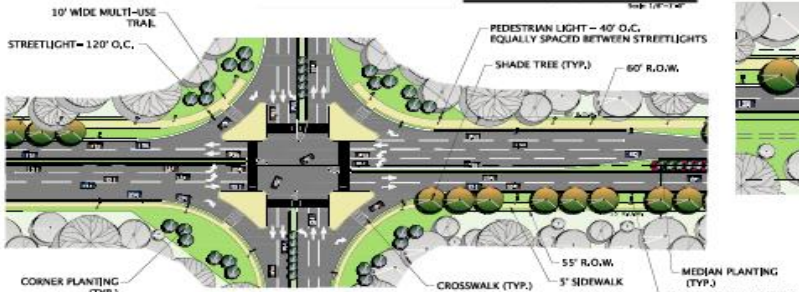




2 LANE TYPICAL SECTION
PHASE 1 CONSTRUCTION

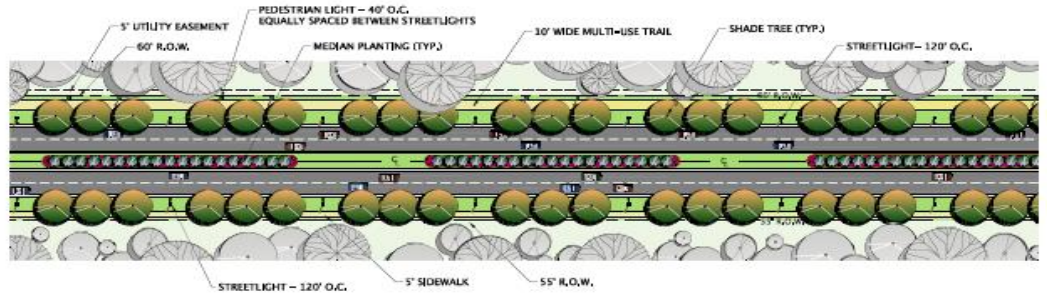
TYPICAL SECTIONS

Scale: 1"=10'-0"



TYPICAL INTERSECTION - 4 LANE

Scale: 1"=40'-0"



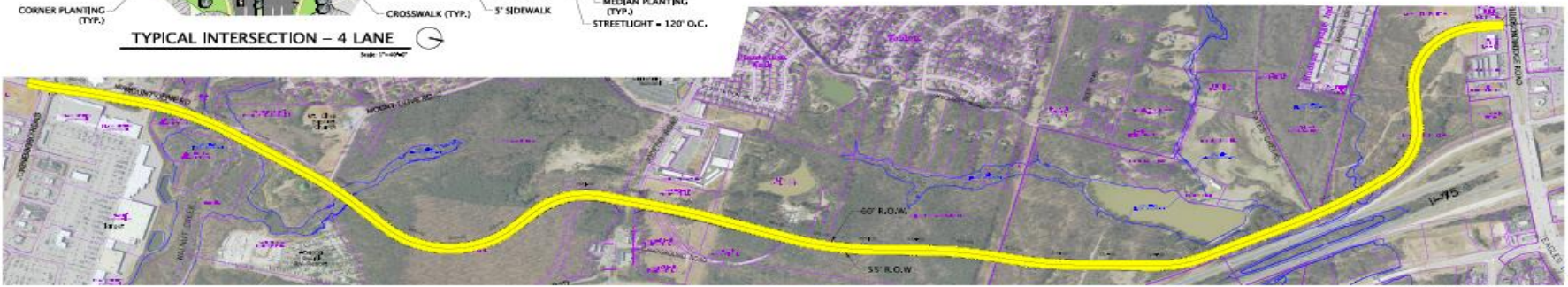
4 LANE - PLAN VIEW

Scale: 1"=40'-0"



**2 LANE - PLAN VIEW
PHASE 1 CONSTRUCTION**

Scale: 1"=40'-0"



LOCATION MAP



Typical Sections & Plan Layouts
March 30, 2012

**CONCEPTUAL PLAN
I-75 WESTERN PARALLEL CONNECTOR**

Greater Atlanta Region's Transportation Policy Studies
Metropolitan Bridge Administration's Road Construction Activity Center
Fulton County, Georgia



SR 20/81 (Hampton Street/Keys Ferry Road) from Jonesboro @ Norfolk Southern RR to Lemon St (City of McDonough, Unincorporated Henry County and adjacent county residents)



GRTA Xpress Park and Ride

- Over 100,000 commuter boardings per year
- Helps to reduce the air quality levels from those commuters utilizing XPRESS





WHAT CAN WE DO

As Leaders.....

ESTABLISH

A transportation system and network for our future

EDUCATE

Citizens on the importance of transportation improvements and current and future funding levels

ENCOURAGE

Citizens to Vote in the General Primary in 2012

