

gwinnettcounty



Department of
Transportation



Transportation Investment Act Gwinnett County



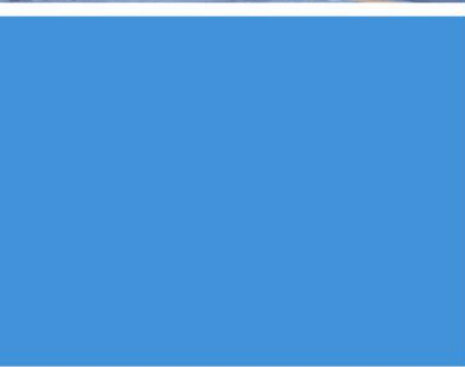
Charlotte J. Nash,
Chairman
Gwinnett County
Board of
Commissioners



April 25, 2012



Transportation Investment Act Gwinnett County



Gwinnett County Transportation Mission Statement



To enhance quality of life by facilitating the mobility of people and goods safely and efficiently.

Project Submittals

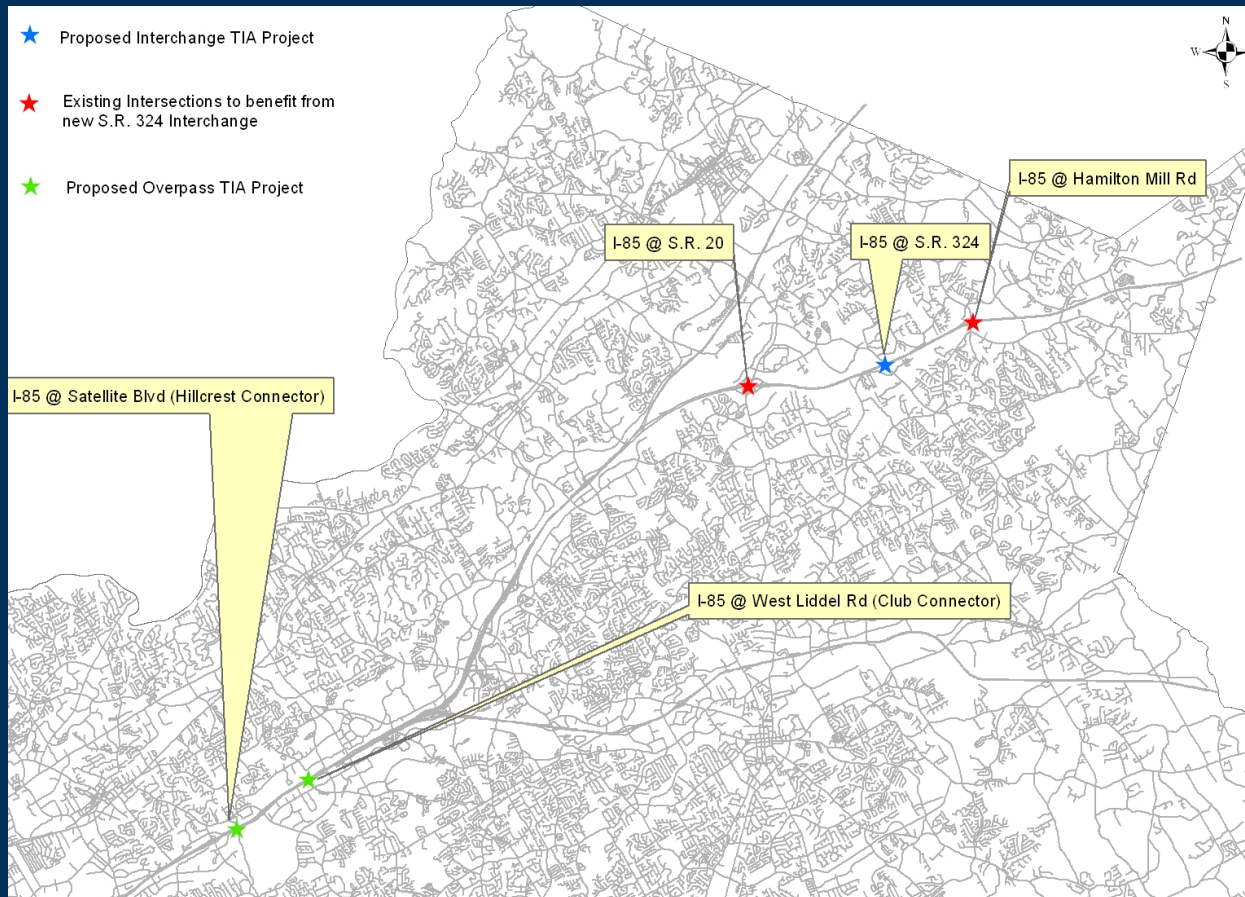
- Developed from Gwinnett County's Comprehensive Transportation Plan (CTP), Regional Transportation Plan (RTP), Transportation Improvement Program (TIP), Unfunded needs identified through the County's SPLOST program and citizen requests
- Various needs identified
 - Improvements along the I-85 Corridor
 - Improved access to neighboring Counties
 - Cross County Connectivity
 - Other Regionally Significant Projects



Improvements along the I-85 Corridor



TIA-GW-025 I-85 at SR 324, TIA-GW-018 Hillcrest Road / Satellite Boulevard Connector, TIA-GW-070 West Liddell Road / Club Drive Connector



- Satellite Boulevard at Hillcrest Road Connector and West Liddell Road at Club Drive Connector add overpasses that relieve the Indian Trail Road, Beaver Ruin Road and Steve Reynolds Boulevard interchanges
- I-85 at SR 324 interchange provides additional access to Mall of Georgia area and relieves heavily congested interchanges at SR 20 at I-85 and Hamilton Mill Road at I-85

TIA-GW-025 I-85 at SR 324

gwinnettcounty



Hamilton Mill Road at I-85

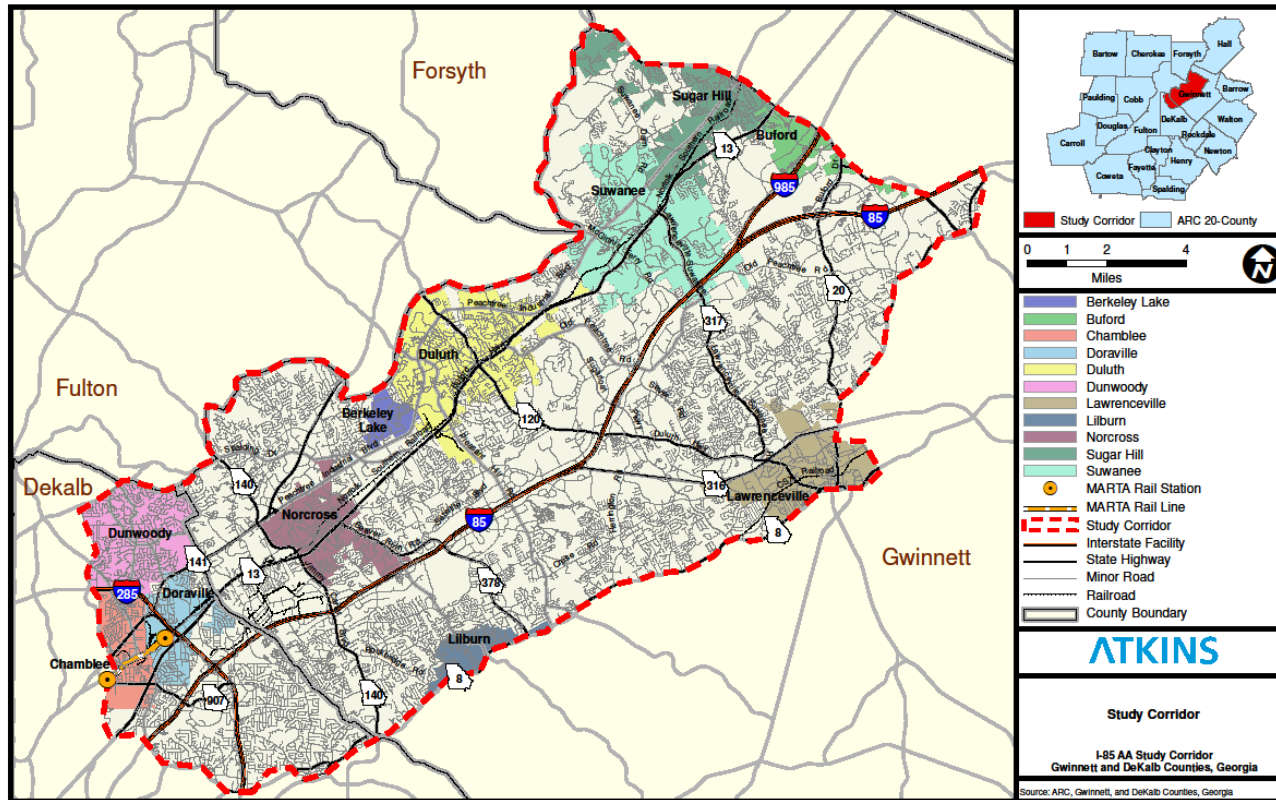
TIA-GW-025 I-85 at SR 324

gwinnettcounty



SR 20 at I-85

TIA-GW-031 I-85 North Transit Corridor



- I-85 Transit Alternatives Analysis presently underway
- Initial Rights-of-Way Acquisition and Construction elements for possible Pilot Project
- Supplements funding of Corridor express bus services

Improved Access to and from Neighboring Counties

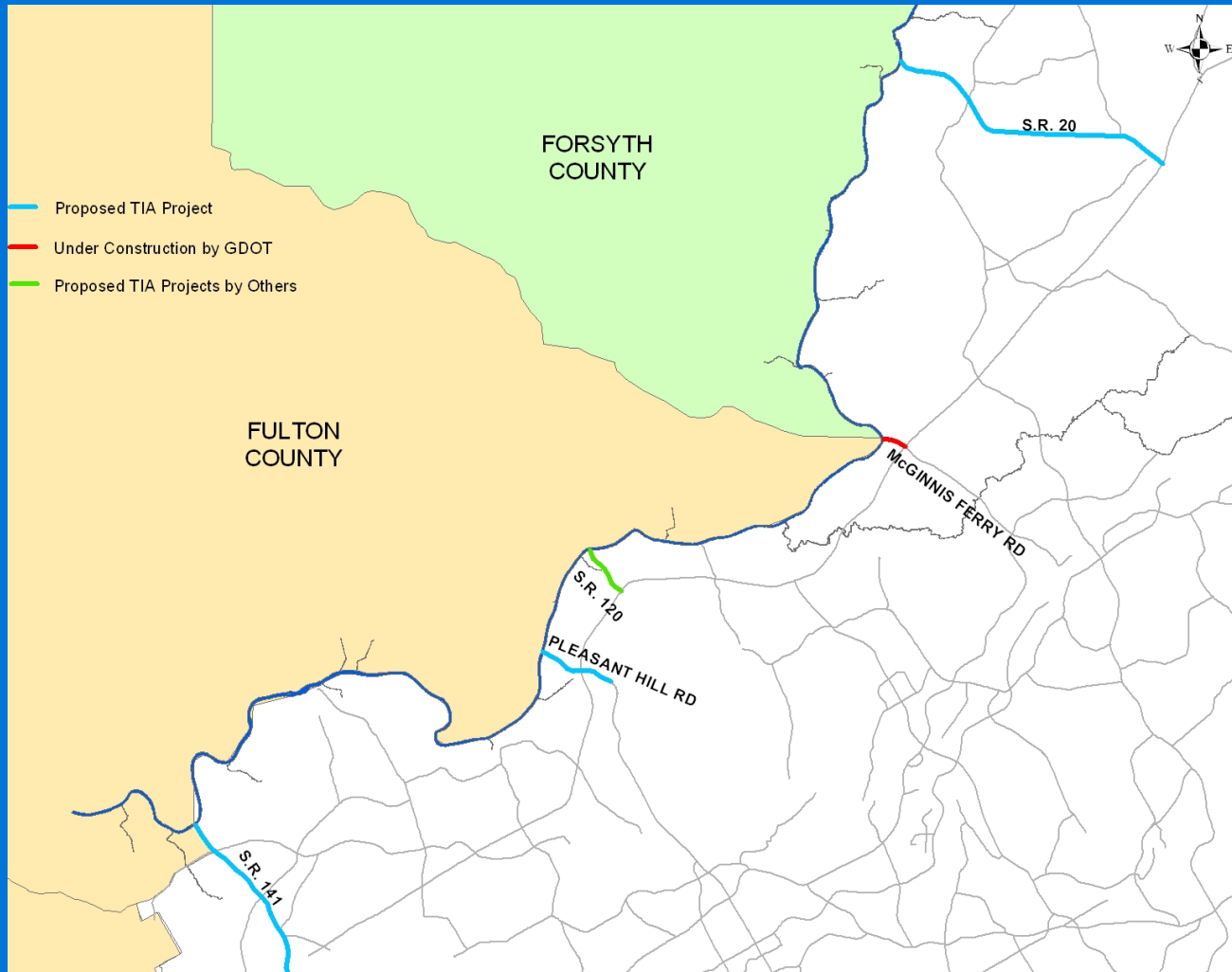


TIA-GW-048 SR 20 Widening & Bridge Replacement

TIA-GW-056 SR 141 Widening

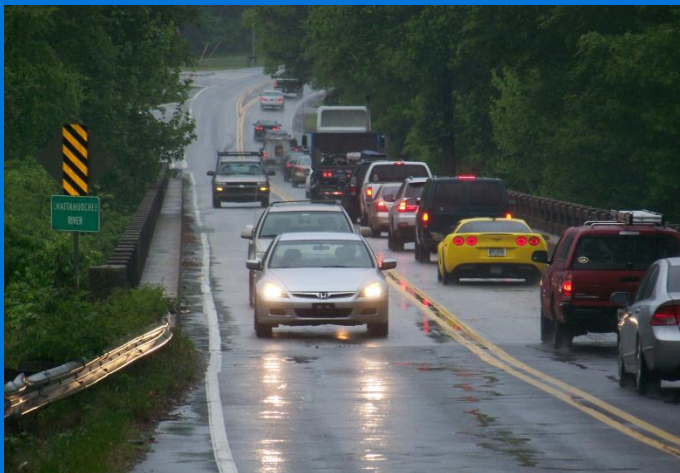
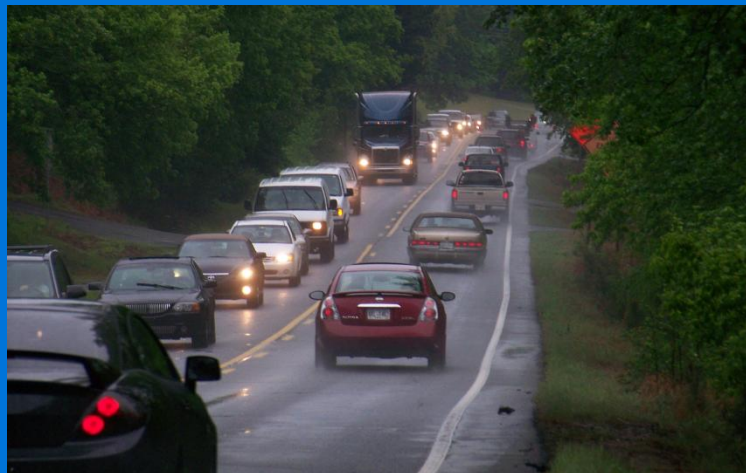
TIA-GW-042 Pleasant Hill Road Widening

gwinnettcounty



TIA-GW-048 SR 20 Widening and Bridge Replacement

gwinnettcounty



- Improves mobility between Gwinnett and Forsyth Counties
- Once widened, SR 20 will be at least 4 lanes throughout Gwinnett County
- High traffic volumes make this corridor one of the most congested 2 lane roads in the region

TIA-GW-042 Pleasant Hill Rd (Howell Ferry Rd-Chattahoochee River widening

gwinnettcounty



- Completes a 6-lane roadway on Pleasant Hill Road from I-85 to Fulton County
- Earlier improvements widened Pleasant Hill Road from Old Norcross Road to Buford Highway and provided a grade separated interchange at Buford Highway
- Widening to 6 lanes from Buford Highway to Howell Ferry Road is currently under construction

TIA-GW-056 SR 141 / Peachtree Pkwy (Peachtree Industrial Blvd-Chattahoochee River) Widening



- Improve mobility between Gwinnett County and Fulton County / Johns Creek
- Highly congested 4 lane road with a traffic volume of over 50,000 vehicles per day

TIA-GW-057 SR 316 at Harbins Road, TIA-GW-058 SR 316 at Hi Hope Road / Cedars Road, TIA-GW-059 SR 316 at US 29 and TIA-GW-069 SR 316 at Walther Boulevard



- 3 grade separated interchange projects eliminate at grade crossings of SR 316, improving safety and efficiency of SR 316 and cross roads
- Walther Boulevard overpass connects Georgia Gwinnett College to the City of Lawrenceville
- Barrow County projects on SR 316 at SR 11 and SR 316 at SR 81 further improve the SR 316 corridor

SR 316 at SR 20

SR 316 at Hi Hope Road



TIA-GW-057 SR 316 at Harbins Road

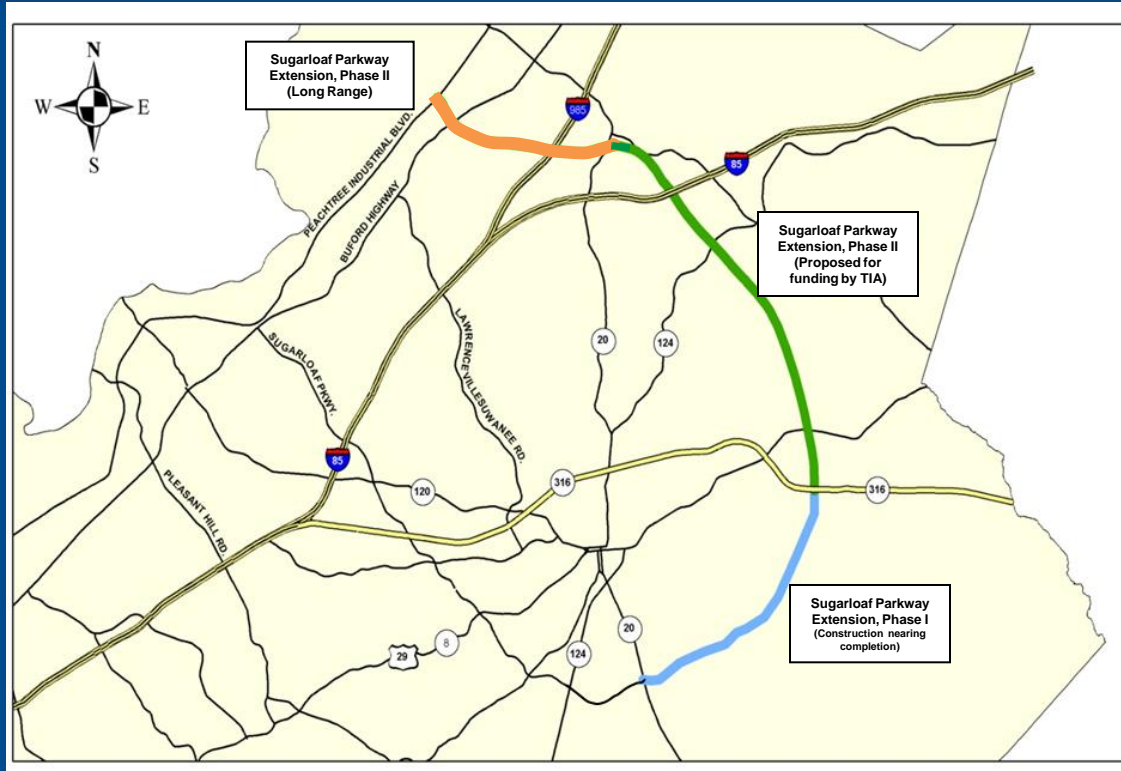
gwinnettcounty



Cross County Connectivity – Sugarloaf Parkway Extension



TIA-GW-060 Sugarloaf Parkway Extension Phase II (SR 316 to SR 20)



- Project consists of a 4-lane divided, limited access roadway
- Project will improve mobility by moving people and goods through the central and eastern part of Gwinnett County
- Project will relieve traffic currently traveling on SR 124, SR 20, US 29 and SR 316

Sugarloaf Parkway Extension at SR 316

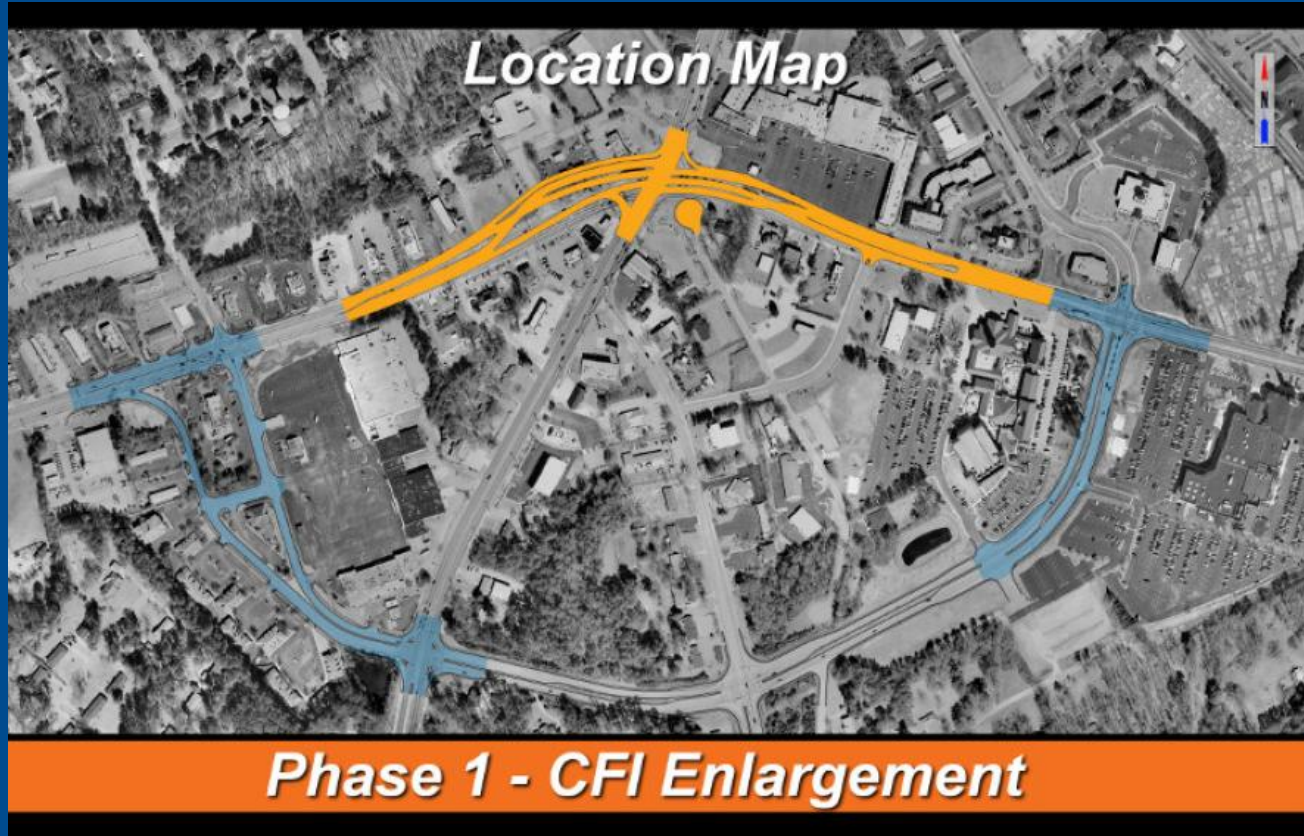
gwinnettcounty





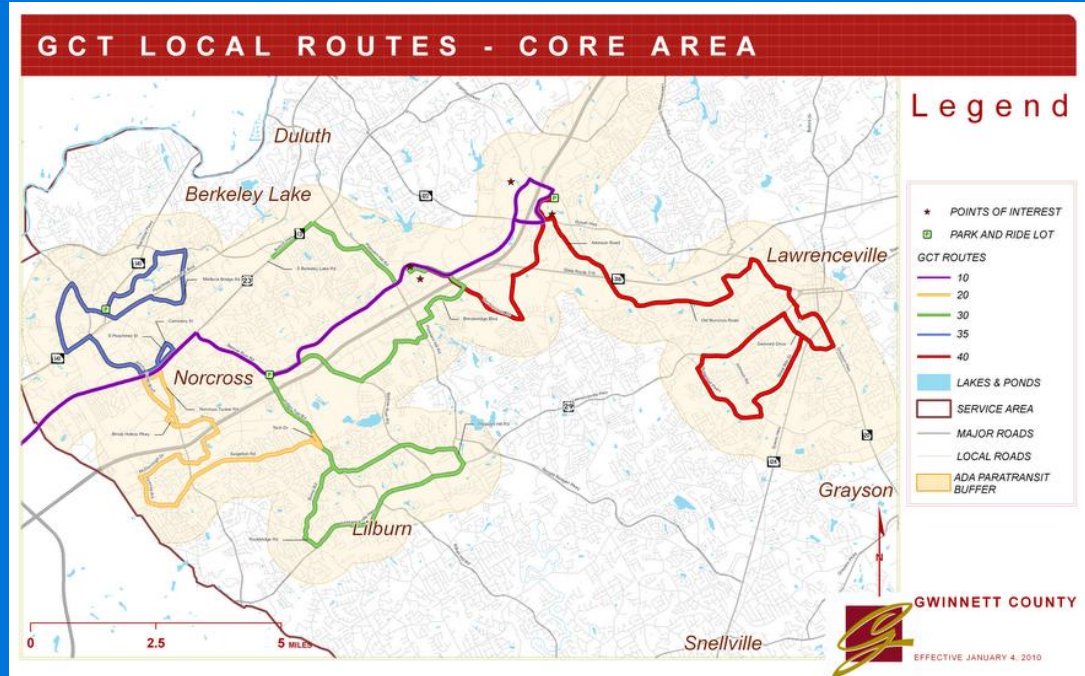
Other Regionally Significant Projects





- Proposed continuous flow intersection (CFI) will reduce number of conflict points resulting in improved safety
- CFI will allow the intersection to function and maintain an acceptable level of service beyond the planning horizon year

TIA-GW-073 Gwinnett County Bus Services



- Support day-to-day operations of Gwinnett County Transit (GCT) system
- Maintain GCT buses, facilities and equipment in state of good repair
- Potential GCT service expansion and/or modification to increase quality & level of service

Remaining Regionally Significant Projects in Gwinnett County

- TIA-GW-003 US 23 (Buford Highway) from George Pierce Park to McGinnis Ferry Road - Corridor Improvements
- TIA-GW-004 US 23 (Buford Highway) from Old Peachtree Road to Sugarloaf Parkway - Widening and Corridor Improvements
- TIA-GW-006 US 23 (Buford Highway) from Sawnee Avenue to SR 347 in Hall County - Widening
- TIA-GW-009 Dacula Road at CSX Rail Line North of US 29 - Bridge Upgrade
- TIA-GW-011 Five Forks Trickum Road from Killian Hill Road to Oak Road - Widening
- TIA-GW-030 US 29 (Lawrenceville Highway) from Hood Road to Hillcrest Road - Multiuse Trail and Pedestrian Improvements
- TIA-GW-049 SR 20 (Buford Drive) from I-985 to US 23 (Buford Highway) - Widening
- TIA-GW-052 SR 120 (Duluth Highway) from Langley Drive to SR 317 (Lawrenceville Suwanee Road) - Widening

TIA-AR-040 I-85 North at I-285 - Interchange Improvements



Existing Exiting Traffic to Northcrest/Pleasantdale Roads



Thank you



gwinnettcounty