



REGIONAL REVIEW NOTIFICATION

Atlanta Regional Commission • 40 Courtland Street NE, Atlanta, Georgia 30303 • ph: 404.463.3100 • fax: 404.463.3105 • www.atlantaregional.com

DATE: 2007-01-16

ARC REVIEW CODE: Q701162

TO: Potentially Affected Local Governments and Other Interested Parties
FROM: Charles Krautler, Director 

The Atlanta Regional Commission (ARC) has received the following proposal and is initiating a regional review to seek comments from potentially impacted jurisdictions and agencies. The ARC requests your comments regarding related to the proposal not addressed by the Commission's regional plans and policies.

Name of Proposal: 5404 Peachtree Road

Review Type: Marta Corridor Area Plan

Description: An Area Plan Review for 5404 Peachtree Road. The proposed development will consist of 32 condominiums and 6,930 square feet of retail on the first floor.

Submitting Local Government: City of Chamblee

Date Opened: 2007-01-16

Deadline for Comments: 2007-01-26

Earliest the Regional Review can be Completed: 2006-01-26

THE FOLLOWING LOCAL GOVERNMENTS AND AGENCIES ARE RECEIVING NOTICE OF THIS REVIEW:

ARC LAND USE PLANNING
ARC DATA RESEARCH
METRO ATLANTA RAPID TRANSIT AUTHORITY
DEKALB COUNTY

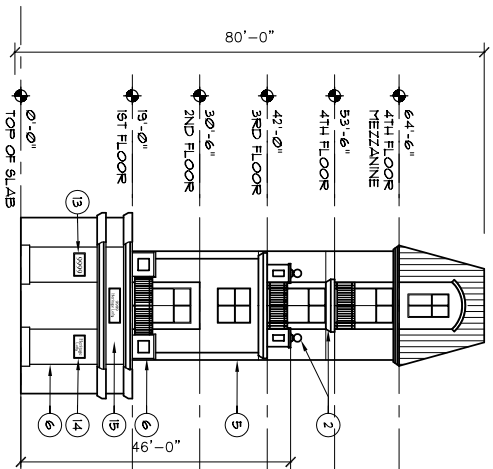
ARC TRANSPORTATION PLANNING
ARC AGING DIVISION
GEORGIA DEPARTMENT OF TRANSPORTATION

ARC ENVIRONMENTAL PLANNING
GEORGIA DEPARTMENT OF COMMUNITY AFFAIRS
GEORGIA REGIONAL TRANSPORTATION AUTHORITY

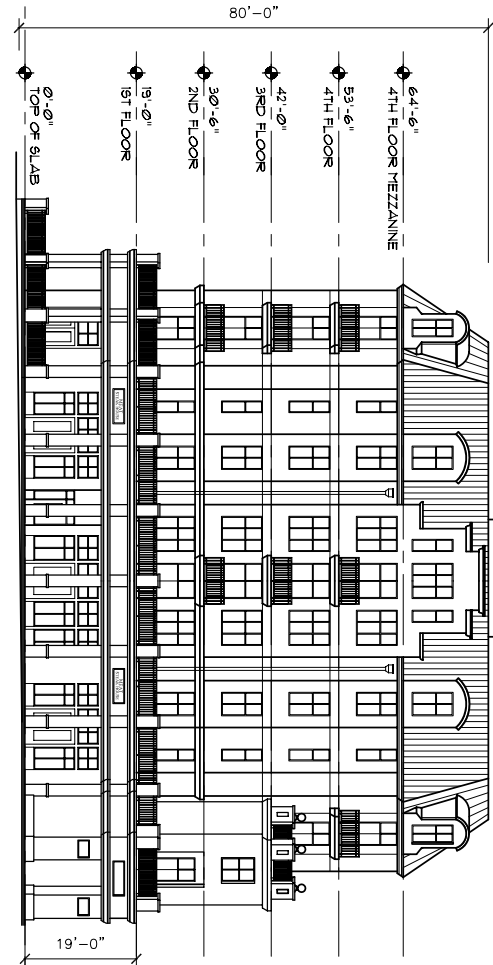
Attached is information concerning this review.

If you have any questions regarding this review, Please call Haley Fleming, Review Coordinator, at (404) 463-3311. If the ARC staff does not receive comments from you by 2007-01-26, we will assume that your agency has no additional comments and we will close the review. Comments by email are strongly encouraged.

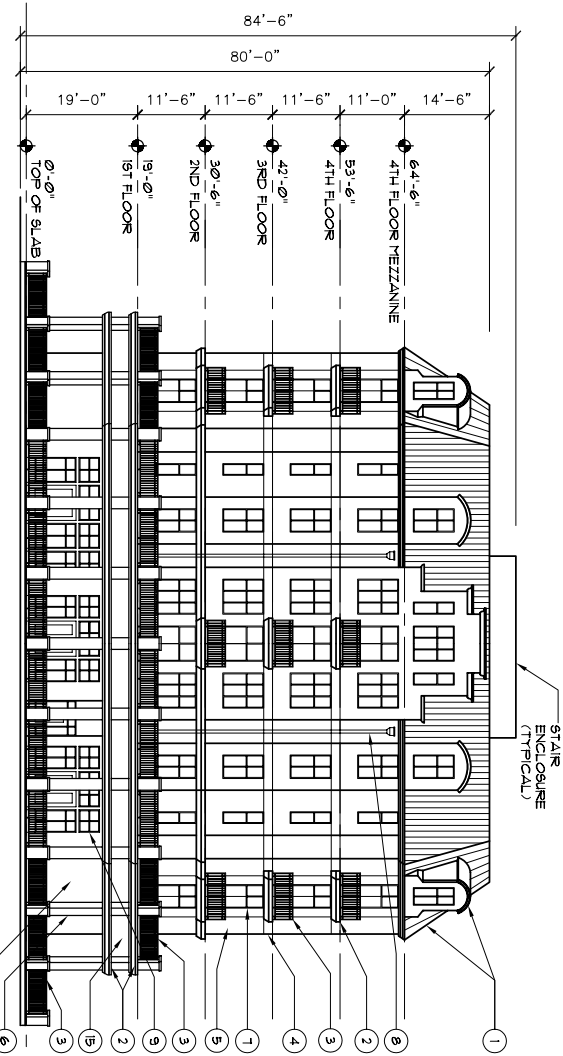
The ARC review website is located at: <http://www.atlantaregional.com/landuse> .



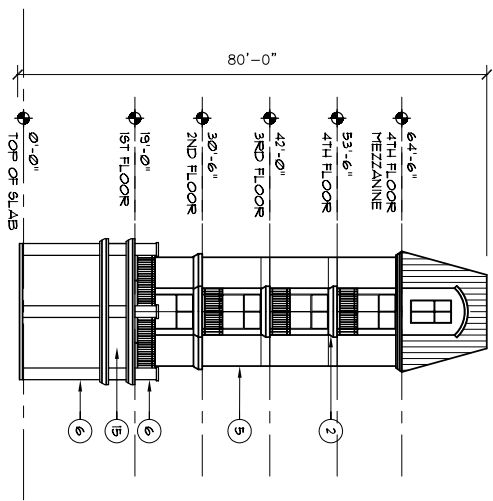
BUILDING ELEVATION
PEACHTREE ROAD FACADE
1
1/16" = 1'-0"



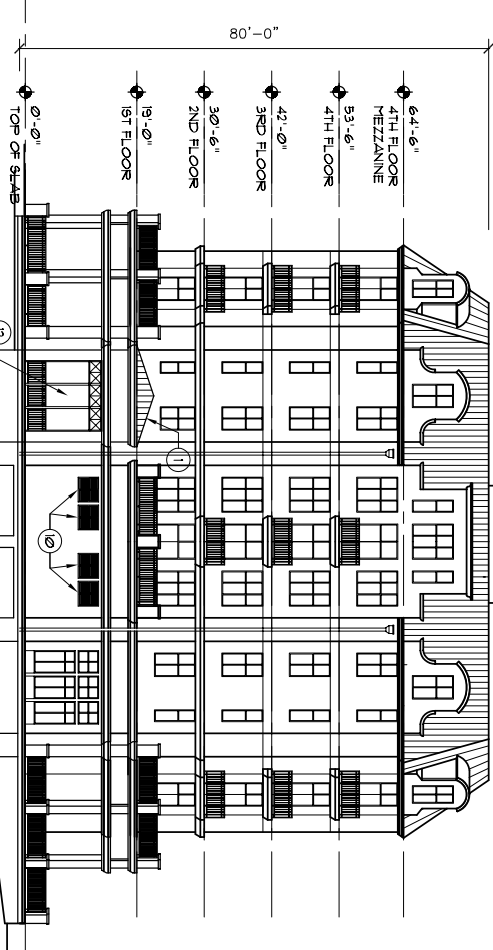
BUILDING ELEVATION
PEACHTREE ROAD FACADE
2
1/16" = 1'-0"



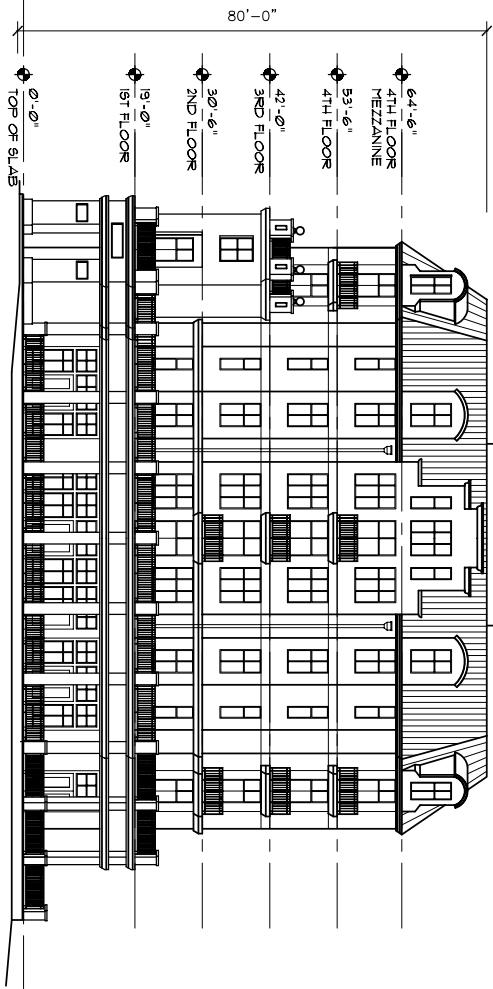
BUILDING ELEVATION
AMERICAN WAY FACADE
3
1/16" = 1'-0"



BUILDING ELEVATION
TYPICAL AT CORNERS
4
1/16" = 1'-0"



BUILDING ELEVATION
RESIDENTIAL PARKING FACADE
5
1/16" = 1'-0"

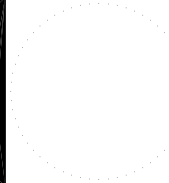


BUILDING ELEVATION
CHAMBLEE-DUNWOODY ROAD FACADE
6
1/16" = 1'-0"

NOTE: SEE ELEVATION 9
FOR TYPICAL MATERIALS

MATERIAL SCHEDULE

KEY#	MATERIAL	COLOR	REMARKS	KEY#	MATERIAL	COLOR	REMARKS
1	STANDING SEAM METAL ROOF	DARK BRONZE		9	WOOD FRAMED WINDOWS AND DOORS	DARK STAINED	
2	PRE-CAST CONCRETE	LIMESTONE		10	DECORATIVE IRONWORK OVER INTAKE VENTS		
3	PAINTED IRON RAILING	BLACK		11	ENTRANCE TO RES. PARKING GARAGE		
4	BRICK BANDING	RED		12	POOL SUNROOM		
5	BRICK	RED		13	STREET ADDRESS		
6	BRICK	GRAY		14	SIGNAGE		
7	CLAD WOOD WINDOW			15	SIGNAGE BAND BRICK	GRAY	
8	ALUMINUM DOWNPOUT	DARK BRONZE					



ROSSINI ARCHITECTURE, Inc.
2035 MANCHESTER ST.
ATLANTA, GA. 30324-2226.
T/ 404.888.9926
F/ 404.888.9928

© ROSSINI ARCHITECTURE, Inc.

HERITAGE LOFTS-PHASE II
CHAMBLEE, GA
FOR GILMER DEVELOPMENT

REVISIONS:

SHEET TITLE:
ARCHITECTURAL
ELEVATIONS

DEVELOPMENT PLANS
DATE: 10/09/06
JOB NO.: 1005/15
DRAWN: JAN
CHECKED: CD
SHEET NO.:

AI