

Legend

GOLF COURSE

PARK SPACE

RAIL STACKING AREA

OTHER OPEN SPACE

DEVELOPMENT FOOTPRINT

OTHER PUBLIC R.O.W./EASEMENTS

ADJACENT PROPERTY USES

TRANSIT/TRAIL R.O.W.

10 FOOT WIDE TRAIL

15 FOOT WIDE TRAIL

TRANSIT PLATFORM

GRAPHIC SCALE

( IN FEET )

1 inch = 50 ft.

N

Notes:

- Building footprints from LiDAR data are more accurate than photo image of structures due to view angle in aerial shots.

- Maps for planning purposes; not approved for legal or construction purposes.

Sources:

- Aerial photography & LiDAR flown by PhotoScience (March 2005)

- Boundary survey by Technical Survey Services, Inc. (June 2005)

- Maps compiled by Jordan, Jones & Goulding (June 2005)

JORDAN JONES & GOULDING

NORTHEAST ATLANTA BELTLINE

A greener way of life for Atlanta

NE ATLANTA BELTLINE

CONCEPT PLAN

DATE: JUN 2006

FOR: The NorthEast Atlanta Beltline Group, LLC.

JOB NO. 6203.001

SCALE: 1 inch = 50 ft

SHEET

REV

1 OF 16

THIS LINE IS ONE INCH LONG WHEN PLOTTED FULL SCALE

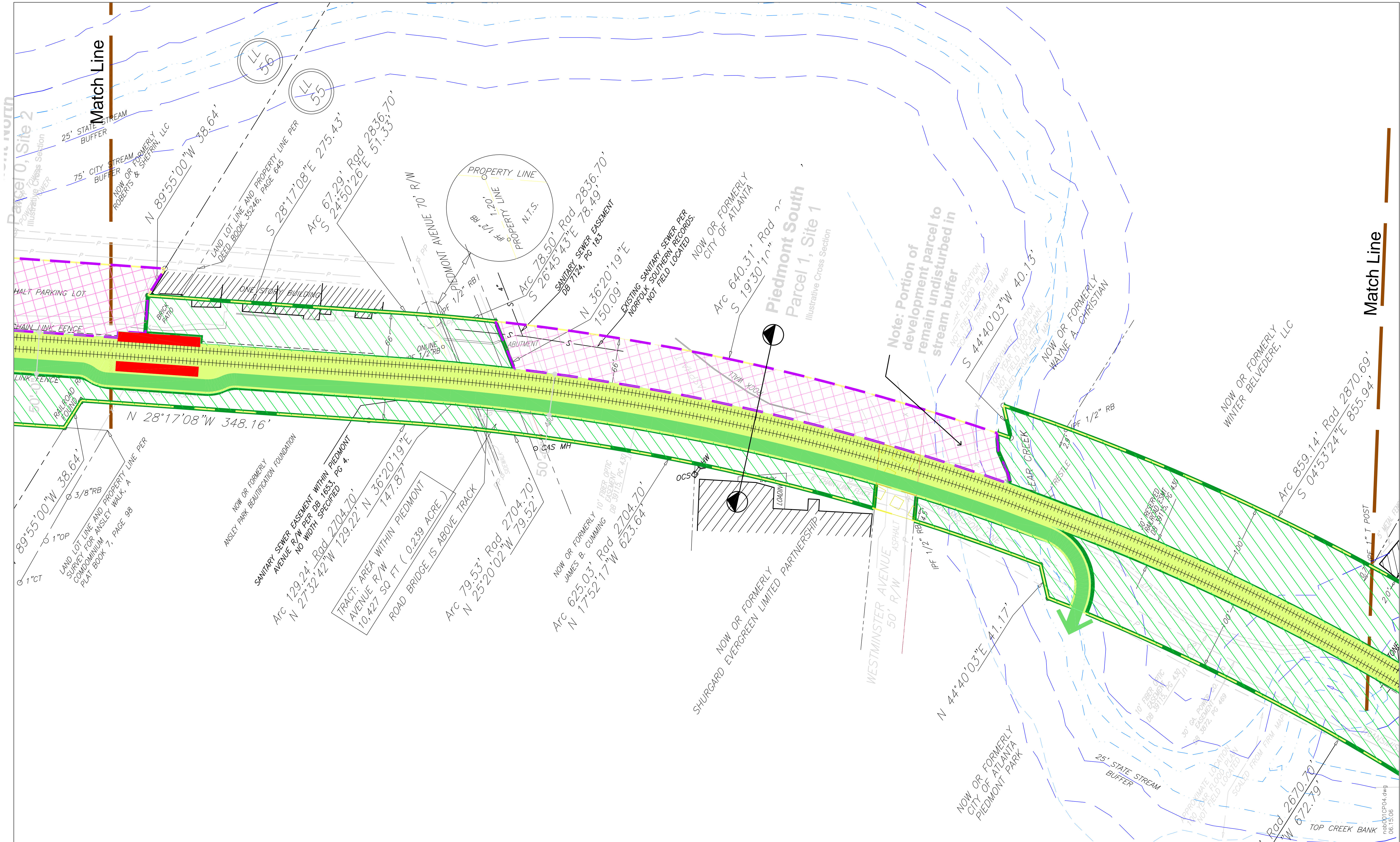












Legend

GOLF COURSE

PARK SPACE

RAIL STACKING AREA

OTHER OPEN SPACE

DEVELOPMENT FOOTPRINT

OTHER PUBLIC R.O.W./EASEMENTS

ADJACENT PROPERTY USES

TRANSIT/TRAIL R.O.W.

10 FOOT WIDE TRAIL

15 FOOT WIDE TRAIL

TRANSIT PLATFORM

GRAPHIC SCALE

500

0

50

100

200

( IN FEET )

1 inch = 50 ft.

N

Notes:

- Building footprints from LIDAR data are more accurate than photo image of structures due to view angle in aerial shots.

- Maps for planning purposes; not approved for legal or construction purposes.

Sources:

- Aerial photography & LIDAR flown by PhotoScience (March 2005)

- Boundary survey by Technical Survey Services, Inc. (June 2005)

- Maps compiled by Jordan, Jones & Goulding (June 2005)

JORDAN JONES & GOULDING

NORTHEAST ATLANTA BELTLINE

A greener way of life for Atlanta.

NE ATLANTA BELTLINE

CONCEPT PLAN

DATE: JUN 2006

FOR: The NorthEast Atlanta Beltline Group, LLC.

SHEET

REV

JOB NO. 6203.001

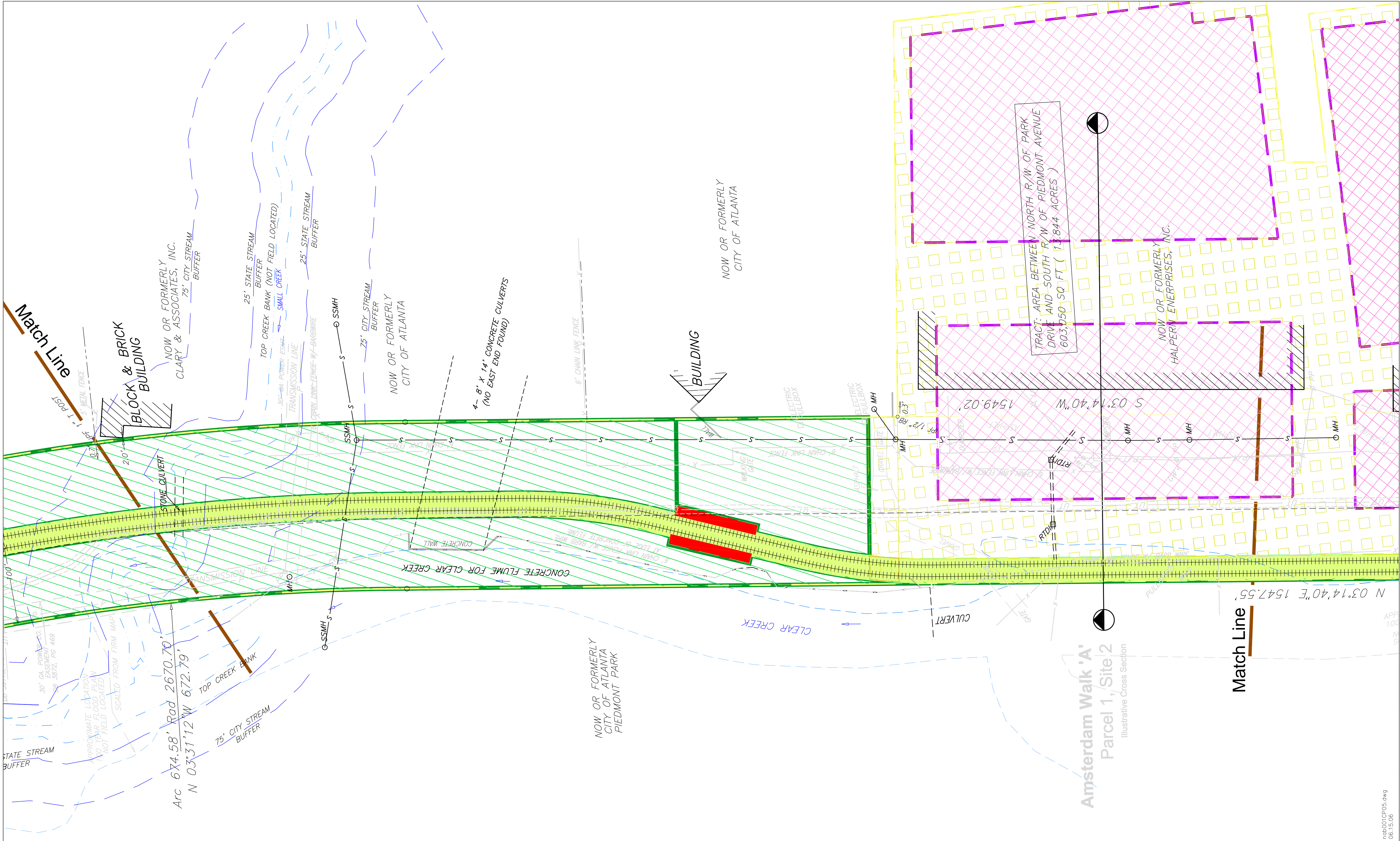
SCALE: 1 inch = 50 ft

4 OF 16

BUONES

THIS LINE IS ONE INCH LONG WHEN PLOTTED FULL SCALE





**Legend**

GOLF COURSE

PARK SPACE

RAIL STACKING AREA

OTHER OPEN SPACE

DEVELOPMENT FOOTPRINT

OTHER PUBLIC R.O.W./EASEMENTS

ADJACENT PROPERTY USES

TRANSIT/TRAIL R.O.W.

10 FOOT WIDE TRAIL

15 FOOT WIDE TRAIL TRANSIT PLATFORM

50

0

25

50

100

200

GRAPHIC SCALE

( IN FEET )

1 inch = 50 ft.

N

**Notes:**

- Building footprints from LIDAR data are more accurate than photo image of structures due to view angle in aerial shots.
- Maps for planning purposes; not approved for legal or construction purposes.

**Sources:**

- Aerial photography & LIDAR flown by PhotoScience (March 2005)
- Boundary survey by Technical Survey Services, Inc. (June 2005)
- Maps compiled by Jordan, Jones & Goulding (June 2005)

**JORDAN JONES & GOULDING**

NORTH EAST ATLANTA BELTLINE

A greener way of life for Atlanta.

NE ATLANTA BELTLINE			
CONCEPT PLAN			
DATE: JUN 2006	FOR: The NorthEast Atlanta Beltline Group, LLC.	SHEET	REV
JOB NO. 6203.001	SCALE: 1 inch = 50 ft	5 OF 16	

nae001CP05.dwg  
06/15/06

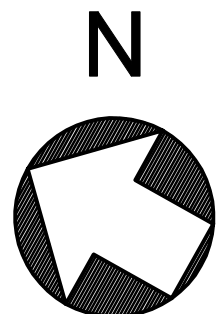
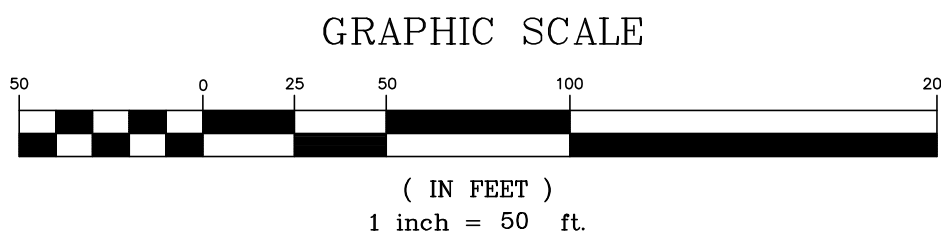
THIS LINE IS ONE INCH LONG WHEN PLOTTED FULL SCALE



Legend

- GOLF COURSE
- PARK SPACE
- RAIL STACKING AREA
- OTHER OPEN SPACE

- DEVELOPMENT FOOTPRINT
- OTHER PUBLIC R.O.W./EASEMENTS
- ADJACENT PROPERTY USES
- TRANSIT/TRAIL R.O.W.
- 10 FOOT WIDE TRAIL
- 15 FOOT WIDE TRAIL
- TRANSIT PLATFORM



Notes:

- Building footprints from LIDAR data are more accurate than photo image of structures due to view angle in aerial shots.
- Maps for planning purposes; not approved for legal or construction purposes.

Sources:

- Aerial photography & LIDAR flown by PhotoScience (March 2005)
- Boundary survey by Technical Survey Services, Inc. (June 2005)
- Maps compiled by Jordan, Jones & Goulding (June 2005)



JORDAN JONES & GOULDING

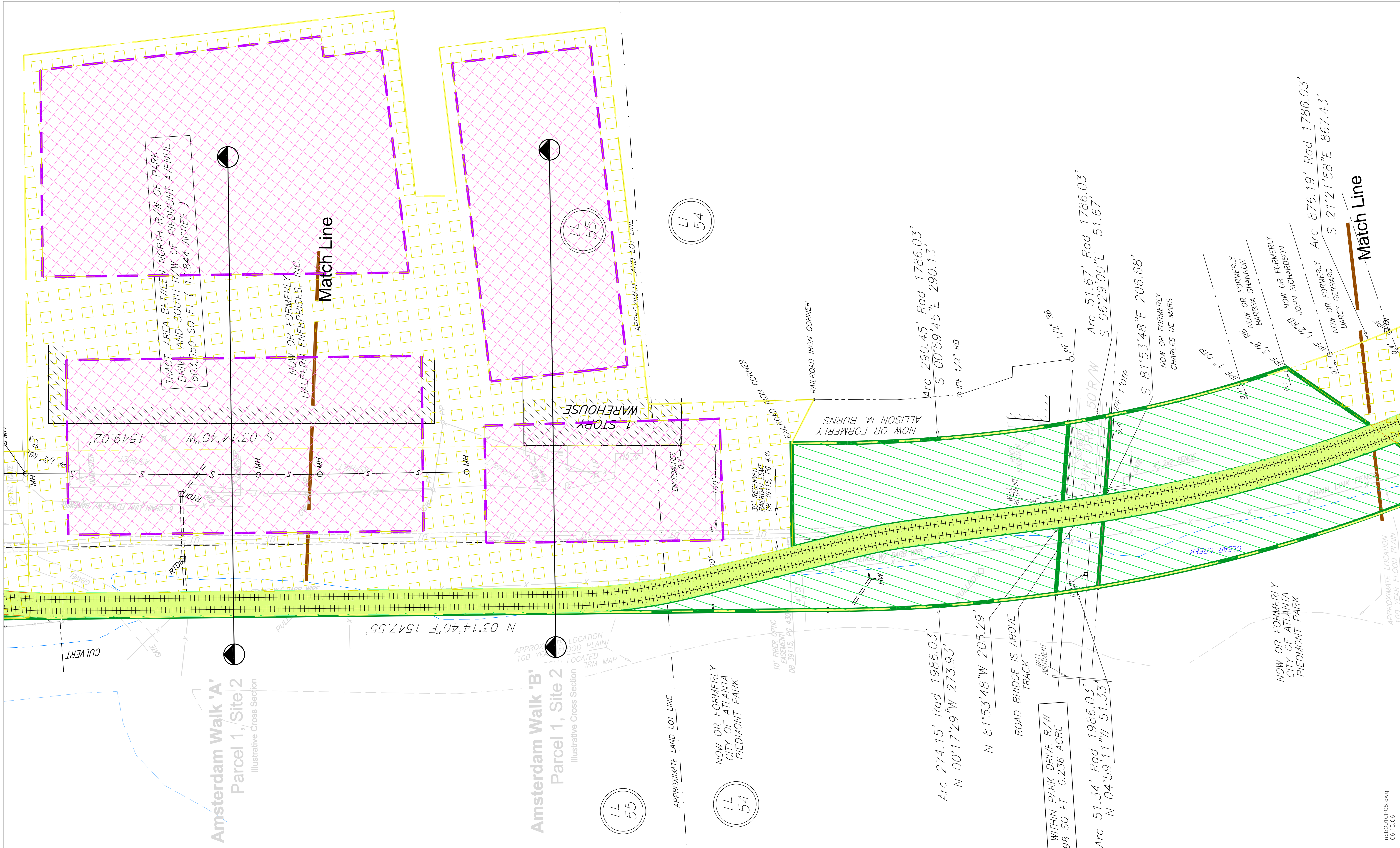


NE ATLANTA BELTLINE

CONCEPT PLAN

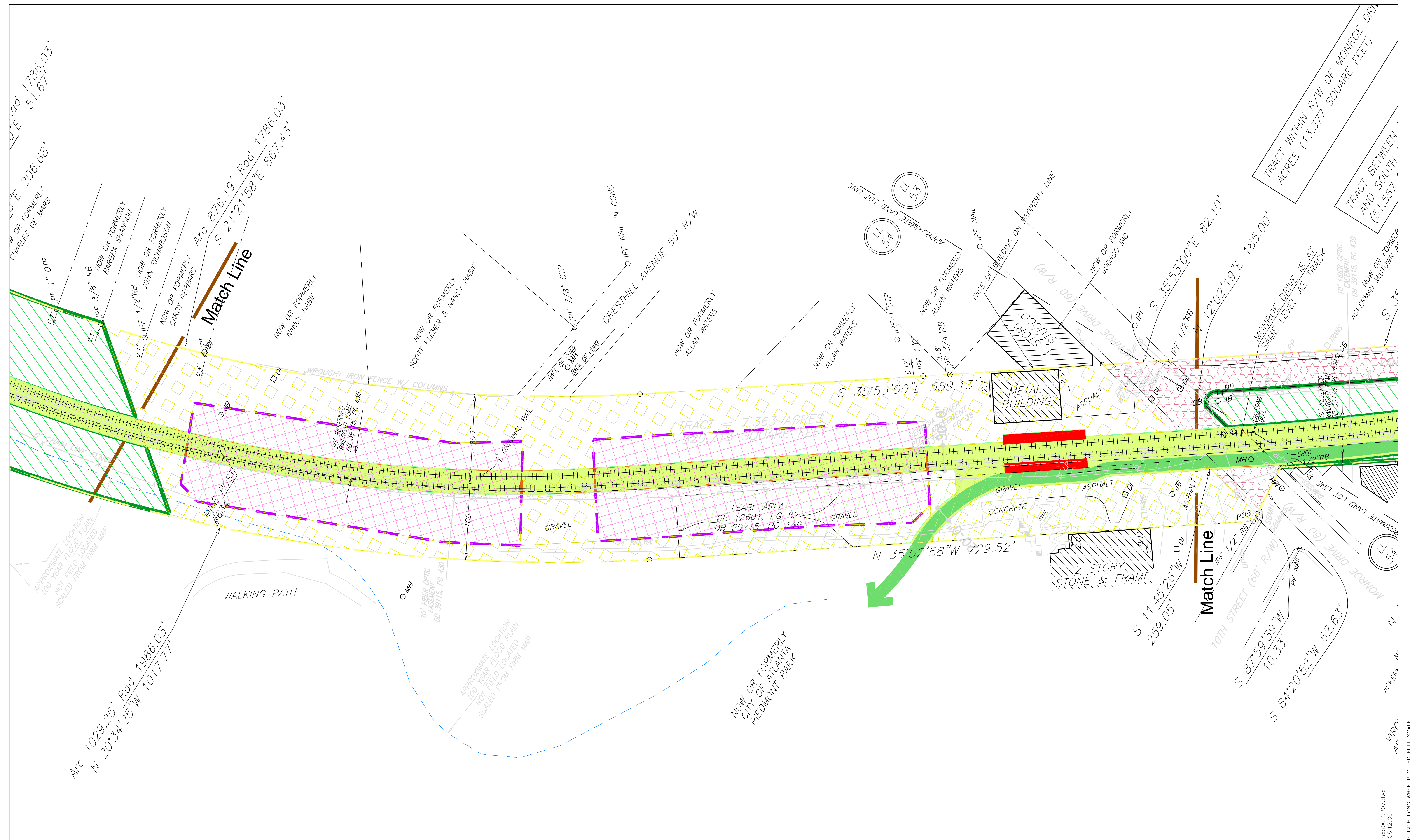
DATE: JUN 2006	FOR: The NorthEast Atlanta Beltline Group, LLC.	SHEET	REV
JOB NO. 6203.001	SCALE: 1 inch = 50 ft	6 OF 16	

THIS LINE IS ONE INCH LONG WHEN PLOTTED FULL SCALE

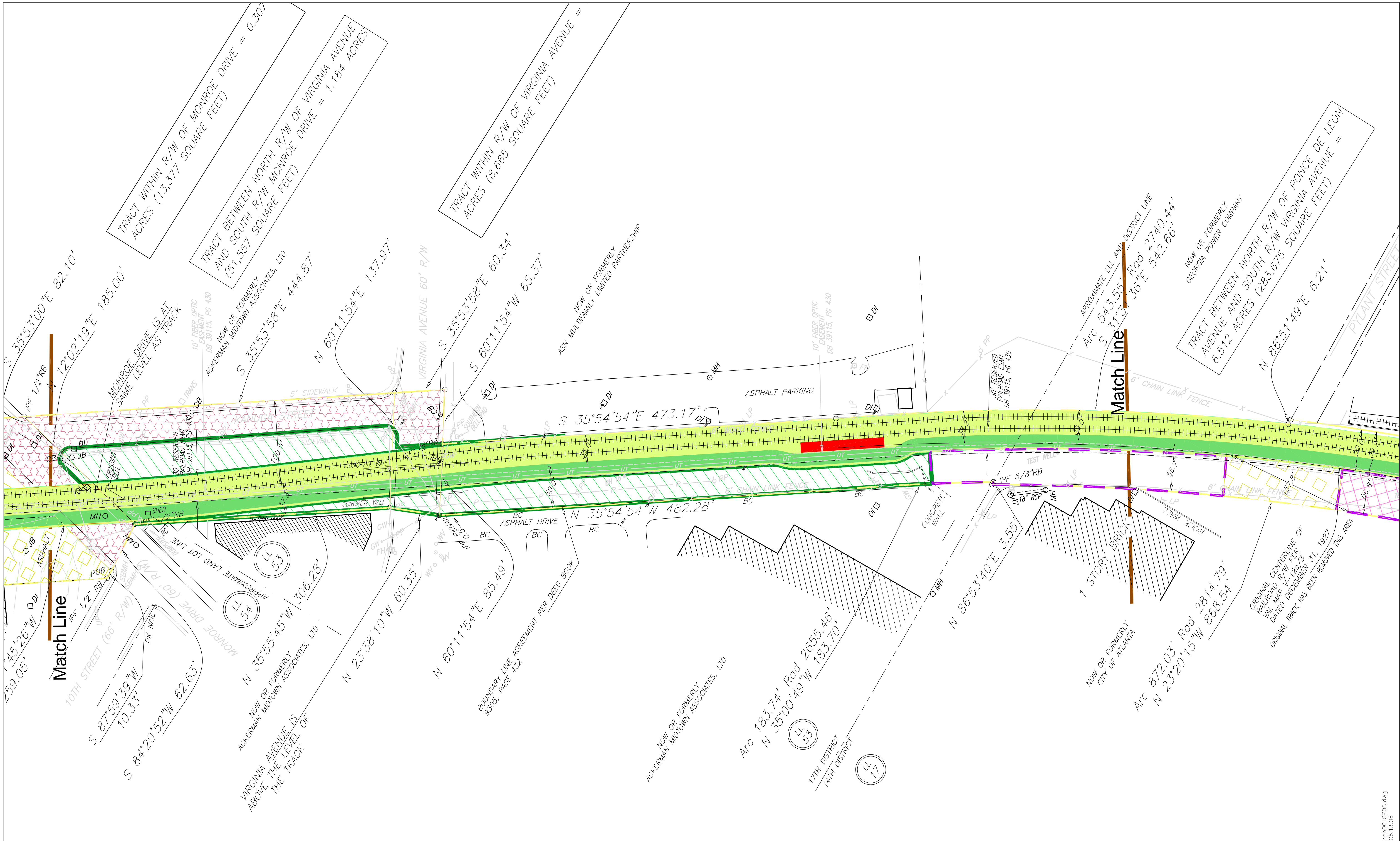


nae001CP06.dwg  
06/15/06









**Legend**

GOLF COURSE

PARK SPACE

RAIL STACKING AREA

OTHER OPEN SPACE

DEVELOPMENT FOOTPRINT

OTHER PUBLIC R.O.W./EASEMENTS

ADJACENT PROPERTY USES

TRANSIT/TRAIL R.O.W.

10 FOOT WIDE TRAIL

15 FOOT WIDE TRAIL

TRANSIT PLATFORM

**GRAPHIC SCALE**

( IN FEET )

1 inch = 50 ft.

**Notes:**

- Building footprints from LIDAR data are more accurate than photo image of structures due to view angle in aerial shots.
- Maps for planning purposes; not approved for legal or construction purposes.

**Sources:**

- Aerial photography & LIDAR flown by PhotoScience (March 2005)
- Boundary survey by Technical Survey Services, Inc. (June 2005)
- Maps compiled by Jordan, Jones & Goulding (June 2005)

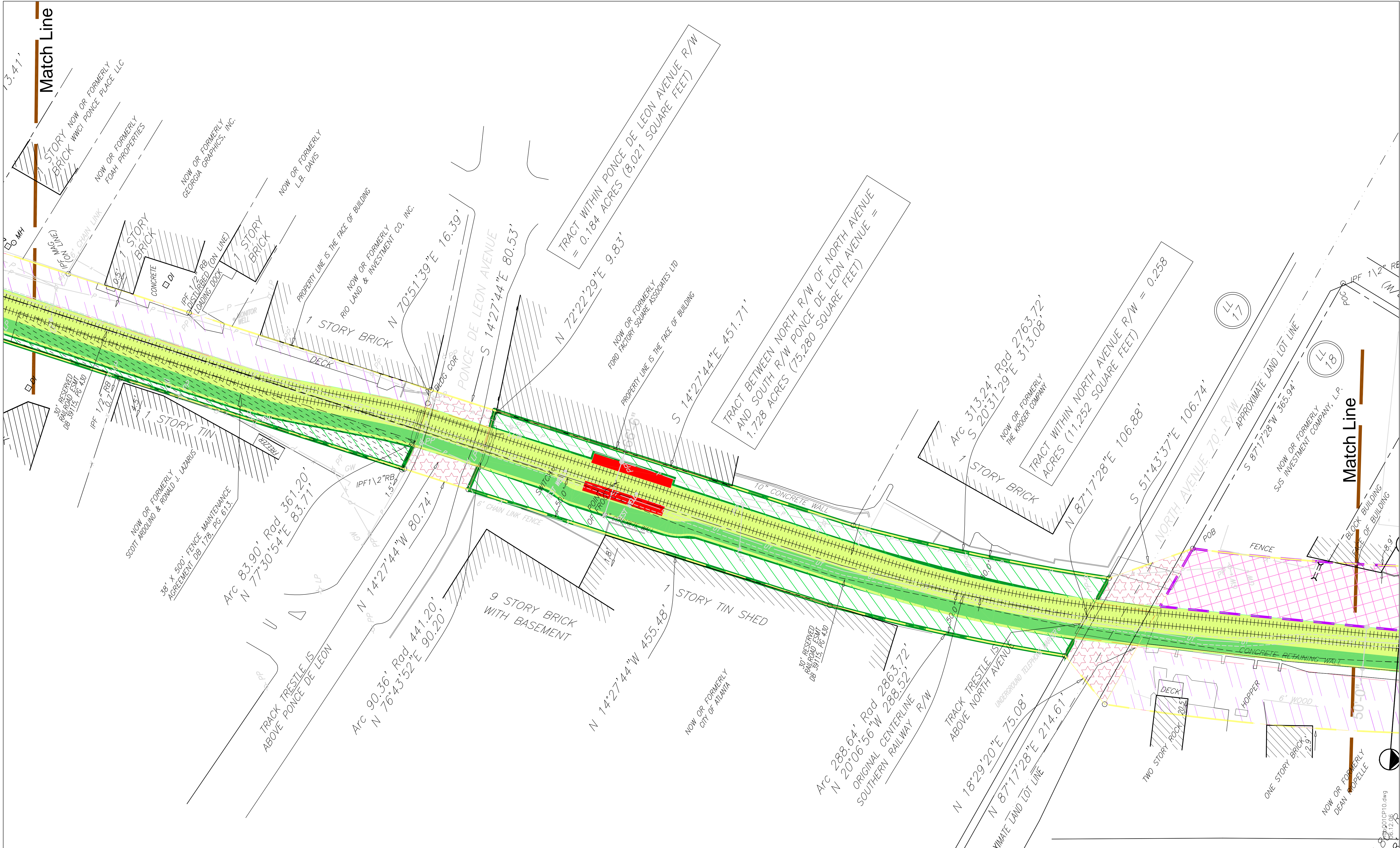


NE ATLANTA BELTLINE			
CONCEPT PLAN			
DATE: JUN 2006	FOR: The NorthEast Atlanta Beltline Group, LLC.	SHEET	REV
JOB NO. 6203.001	SCALE: 1 inch = 50 ft	8 OF 16	









**Legend**

GOLF COURSE

PARK SPACE

RAIL STACKING AREA

OTHER OPEN SPACE

DEVELOPMENT FOOTPRINT

OTHER PUBLIC R.O.W./EASEMENTS

ADJACENT PROPERTY USES

TRANSIT/TRAIL R.O.W.

10 FOOT WIDE TRAIL

15 FOOT WIDE TRAIL

TRANSIT PLATFORM

**GRAPHIC SCALE**

( IN FEET )

1 inch = 50 ft.

**Notes:**

- Building footprints from LIDAR data are more accurate than photo image of structures due to view angle in aerial shots.

- Maps for planning purposes; not approved for legal or construction purposes.

**Sources:**

- Aerial photography & LIDAR flown by PhotoScience (March 2005)

- Boundary survey by Technical Survey Services, Inc. (June 2005)

- Maps compiled by Jordan, Jones & Goulding (June 2005)

**JORDAN JONES & GOULDING**

**NORTHEAST ATLANTA BELTLINE**

*A greener way of life for Atlanta.*

NE ATLANTA BELTLINE			
CONCEPT PLAN			
DATE: JUN 2006	FOR: The NorthEast Atlanta Beltline Group, LLC.	SHEET	REV
JOB NO. 6203.001	SCALE: 1 inch = 50 ft	10 OF 16	

THIS LINE IS ONE INCH LONG WHEN PLOTTED FULL SCALE





**Legend**

GOLF COURSE

PARK SPACE

RAIL STACKING AREA

OTHER OPEN SPACE

DEVELOPMENT FOOTPRINT

OTHER PUBLIC R.O.W./EASEMENTS

ADJACENT PROPERTY USES

TRANSIT/TRAIL R.O.W.

10 FOOT WIDE TRAIL

15 FOOT WIDE TRAIL

TRANSIT PLATFORM

50

0

25

50

100

200

GRAPHIC SCALE

( IN FEET )

1 inch = 50 ft.

N

**Notes:**

- Building footprints from LIDAR data are more accurate than photo image of structures due to view angle in aerial shots.
- Maps for planning purposes; not approved for legal or construction purposes.

**Sources:**

- Aerial photography & LIDAR flown by PhotoScience (March 2005)
- Boundary survey by Technical Survey Services, Inc. (June 2005)
- Maps compiled by Jordan, Jones & Goulding (June 2005)

**JORDAN JONES & GOULDING**

**NORTHEAST ATLANTA BELTLINE**  
*A greener way of life for Atlanta.*

NE ATLANTA BELTLINE			
CONCEPT PLAN			
DATE: JUN 2006	FOR: The NorthEast Atlanta Beltline Group, LLC.	SHEET	REV
JOB NO. 6203.001	SCALE: 1 inch = 50 ft	11 OF 16	

nat001CP11.dwg  
06/15/06

THIS LINE IS ONE INCH LONG WHEN PLOTTED FULL SCALE

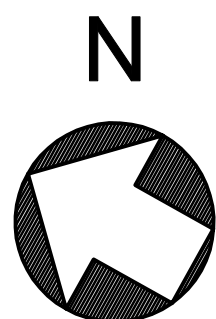
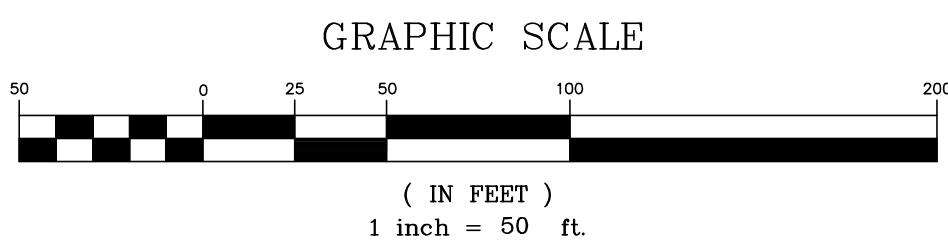




Legend

- GOLF COURSE
- PARK SPACE
- RAIL STACKING AREA
- OTHER OPEN SPACE

- DEVELOPMENT FOOTPRINT
- OTHER PUBLIC R.O.W./EASEMENTS
- ADJACENT PROPERTY USES
- TRANSIT/TRAIL R.O.W.
- 10 FOOT WIDE TRAIL
- 15 FOOT WIDE TRAIL
- TRANSIT PLATFORM

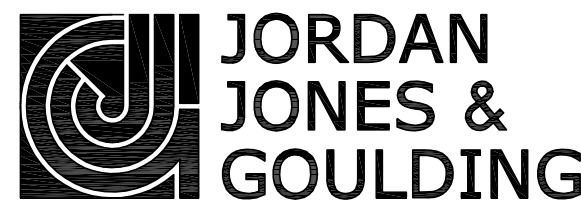


Notes:

- Building footprints from LIDAR data are more accurate than photo image of structures due to view angle in aerial shots.
- Maps for planning purposes; not approved for legal or construction purposes.

Sources:

- Aerial photography & LIDAR flown by PhotoScience (March 2005)
- Boundary survey by Technical Survey Services, Inc. (June 2005)
- Maps compiled by Jordan, Jones & Goulding (June 2005)



NE ATLANTA BELTLINE

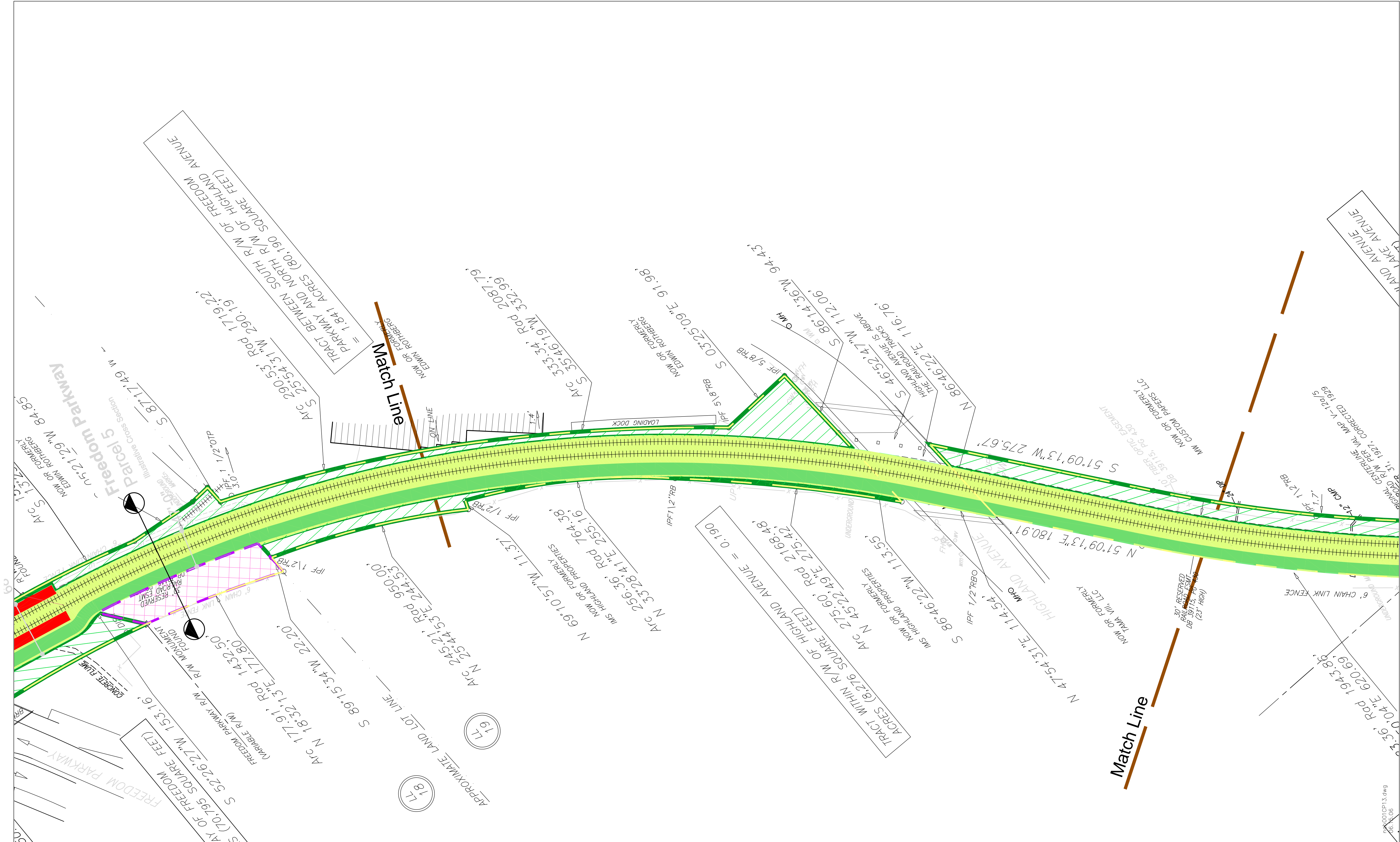
CONCEPT PLAN

DATE: JUN 2006	FOR: The NorthEast Atlanta Beltline Group, LLC.	SHEET	REV
JOB NO. 6203.001	SCALE: 1 inch = 50 ft	12 OF 16	

na0001CP12.dwg  
06/15/06

THIS LINE IS ONE INCH LONG WHEN PLOTTED FULL SCALE





**Legend**

GOLF COURSE

PARK SPACE

RAIL STACKING AREA

OTHER OPEN SPACE

DEVELOPMENT FOOTPRINT

OTHER PUBLIC R.O.W./EASEMENTS

ADJACENT PROPERTY USES

TRANSIT/TRAIL R.O.W.

10 FOOT WIDE TRAIL

15 FOOT WIDE TRAIL

TRANSIT PLATFORM

500

0

50

100

200

GRAPHIC SCALE

( IN FEET )

1 inch = 50 ft.

N

**Notes:**

- Building footprints from LIDAR data are more accurate than photo image of structures due to view angle in aerial shots.

- Maps for planning purposes; not approved for legal or construction purposes.

**Sources:**

- Aerial photography & LIDAR flown by PhotoScience (March 2005)

- Boundary survey by Technical Survey Services, Inc. (June 2005)

- Maps compiled by Jordan, Jones & Goulding (June 2005)

**JORDAN JONES & GOULDING**

**NORTHEAST ATLANTA BELTLINE**  
*A greener way of life for Atlanta.*

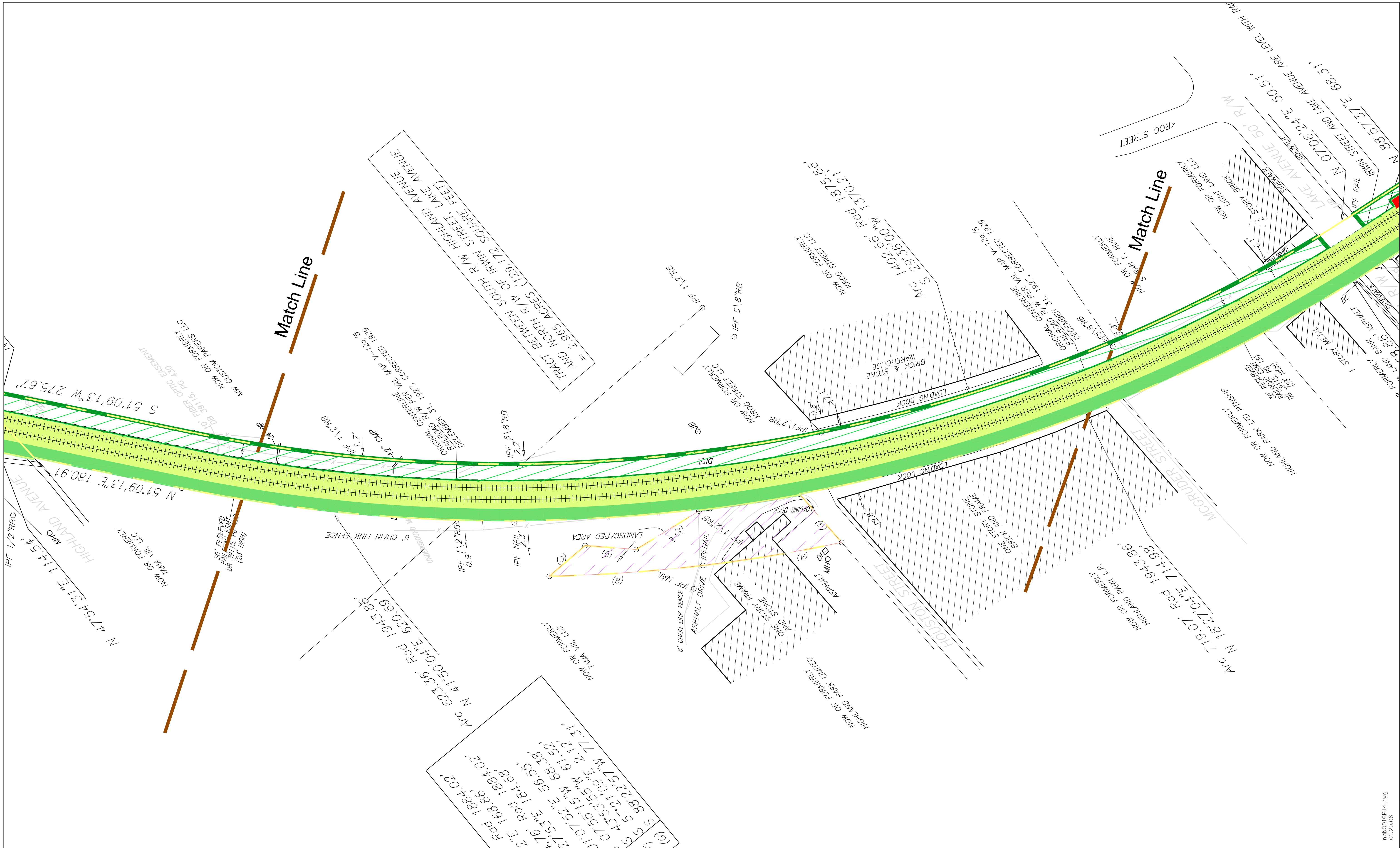
**NE ATLANTA BELTLINE**

**CONCEPT PLAN**

DATE: JUN 2006	FOR: The NorthEast Atlanta Beltline Group, LLC.	SHEET	REV
JOB NO. 6203.001	SCALE: 1 inch = 50 ft	13 OF 16	

THIS LINE IS ONE INCH LONG WHEN PLOTTED FULL SCALE

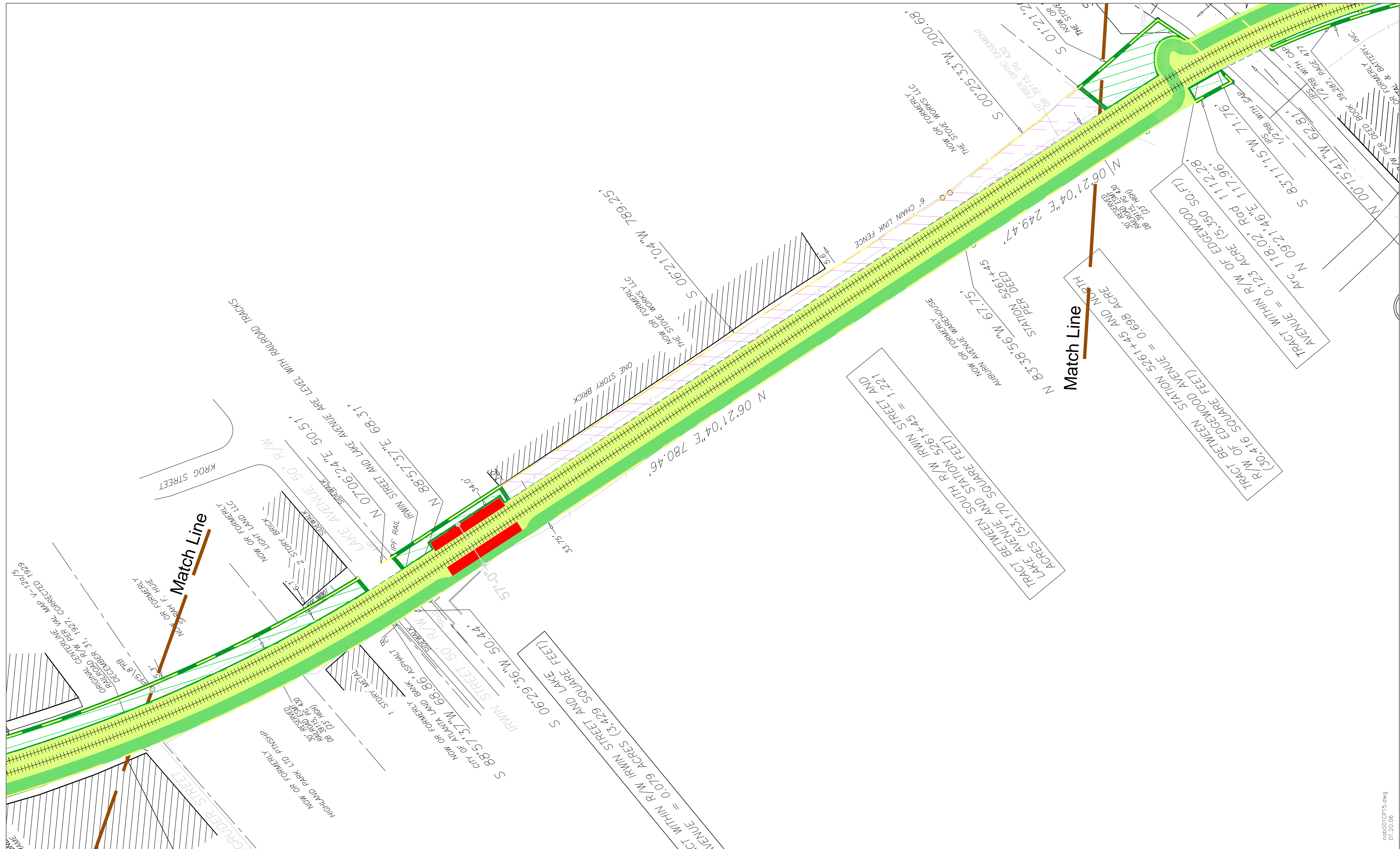




nab0010CP14.dwg  
01.20.06

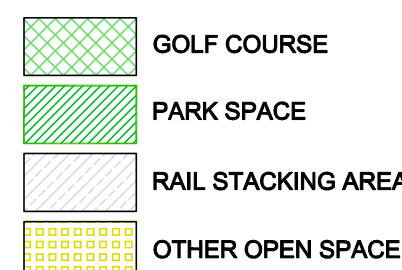
<b>Legend</b> <div><div><div><div><div></div><div>GOLF COURSE</div></div><div><div></div><div>PARK SPACE</div></div><div><div></div><div>RAIL STACKING AREA</div></div><div><div></div><div>OTHER OPEN SPACE</div></div></div><div><div><div></div><div>DEVELOPMENT FOOTPRINT</div></div><div><div></div><div>OTHER PUBLIC R.O.W./EASEMENTS</div></div><div><div></div><div>ADJACENT PROPERTY USES</div></div><div><div></div><div>TRANSIT/TRAIL R.O.W.</div></div><div><div><div></div><div>10 FOOT WIDE TRAIL</div></div><div><div></div><div>15 FOOT WIDE TRAIL</div></div><div><div></div><div>TRANSIT PLATFORM</div></div></div></div></div></div>	<div>GRAPHIC SCALE ( IN FEET ) 1 inch = 50 ft.</div> <div>N</div>	<b>Notes:</b>  - Building footprints from LIDAR data are more accurate than photo image of structures due to view angle in aerial shots.  - Maps for planning purposes; not approved for legal or construction purposes.	<b>Sources:</b>  - Aerial photography & LIDAR flown by PhotoScience (March 2005) - Boundary survey by Technical Survey Services, Inc. (June 2005) - Maps compiled by Jordan, Jones & Goulding (June 2005)			NE ATLANTA BELTLINE			
						CONCEPT PLAN			
						DATE: JUN 2006	FOR: The NorthEast Atlanta Beltline Group, LLC.	SHEET 14 OF 16	REV



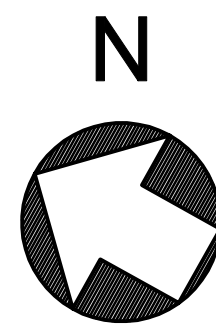
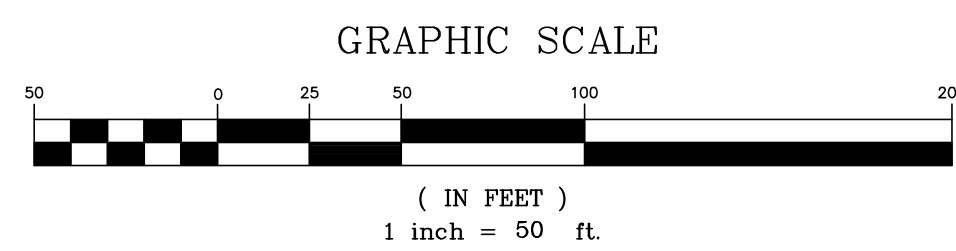
nac001QP15.dwg  
01/20/06

THIS LINE IS ONE INCH LONG WHEN PLOTTED FULL SCALE

## Legend



DEVELOPMENT FOOTPRINT
OTHER PUBLIC R.O.W./EASEMENTS
ADJACENT PROPERTY USES
TRANSIT/TRAIL R.O.W.
10 FOOT WIDE TRAIL
15 FOOT WIDE TRAIL
TRANSIT PLATFORM

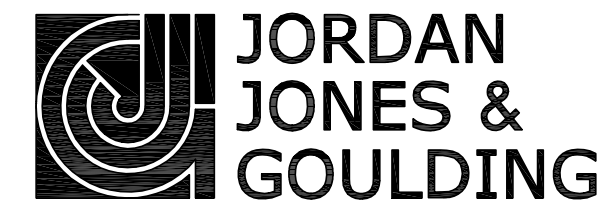


## Notes:

- Building footprints from LIDAR data are more accurate than photo image of structures due to view angle in aerial shots.
- Maps for planning purposes; not approved for legal or construction purposes.

## Sources:

- Aerial photography & LIDAR flown by PhotoScience (March 2005)
- Boundary survey by Technical Survey Services, Inc. (June 2005)
- Maps compiled by Jordan, Jones & Goulding (June 2005)



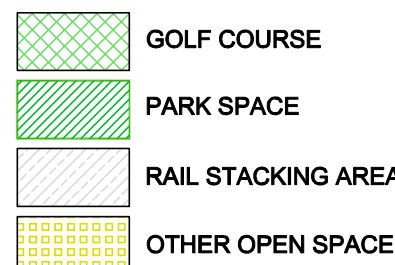
## NE ATLANTA BELTLINE

## CONCEPT PLAN

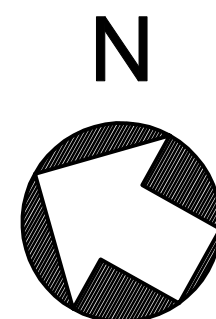
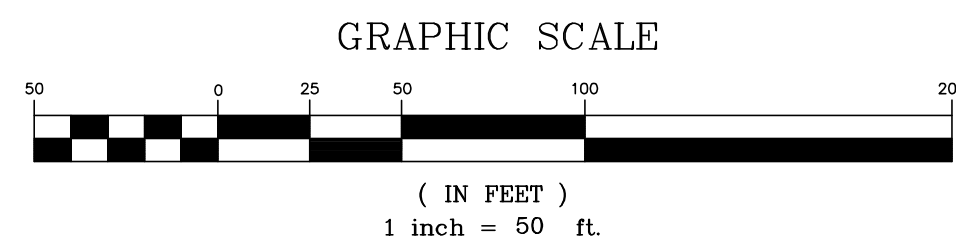
DATE: JUN 2006	FOR: The NorthEast Atlanta Beltline Group, LLC.	SHEET	REV
JOB NO. 6203.001	SCALE: 1 inch = 50 ft	15 OF 16	



## Legend



- DEVELOPMENT FOOTPRINT  
OTHER PUBLIC R.O.W./EASEMENTS  
ADJACENT PROPERTY USES  
TRANSIT/TRAIL R.O.W.  
10 FOOT WIDE TRAIL  
15 FOOT WIDE TRAIL  
TRANSIT PLATFORM

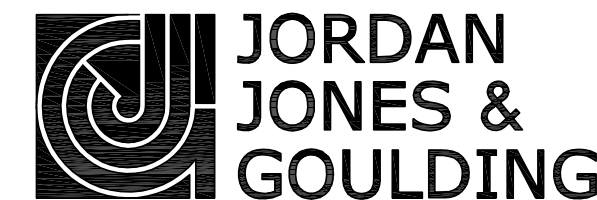


## Notes:

- Building footprints from LIDAR data are more accurate than photo image of structures due to view angle in aerial shots.
- Maps for planning purposes; not approved for legal or construction purposes.

## Sources:

- Aerial photography & LIDAR flown by PhotoScience (March 2005)
- Boundary survey by Technical Survey Services, Inc. (June 2005)
- Maps compiled by Jordan, Jones & Goulding (June 2005)



## NE ATLANTA BELTLINE

## CONCEPT PLAN

DATE: JUN 2006	FOR: The NorthEast Atlanta Beltline Group, LLC.	SHEET	REV
JOB NO. 6203.001	SCALE: 1 inch = 50 ft	16 OF 16	

nac001QP16.dwg  
01.20.06

THIS LINE IS ONE INCH LONG WHEN PLOTTED FULL SCALE

