

*Official Comprehensive 2025 Plan
Future Land Use Map
City of Roswell, GA*

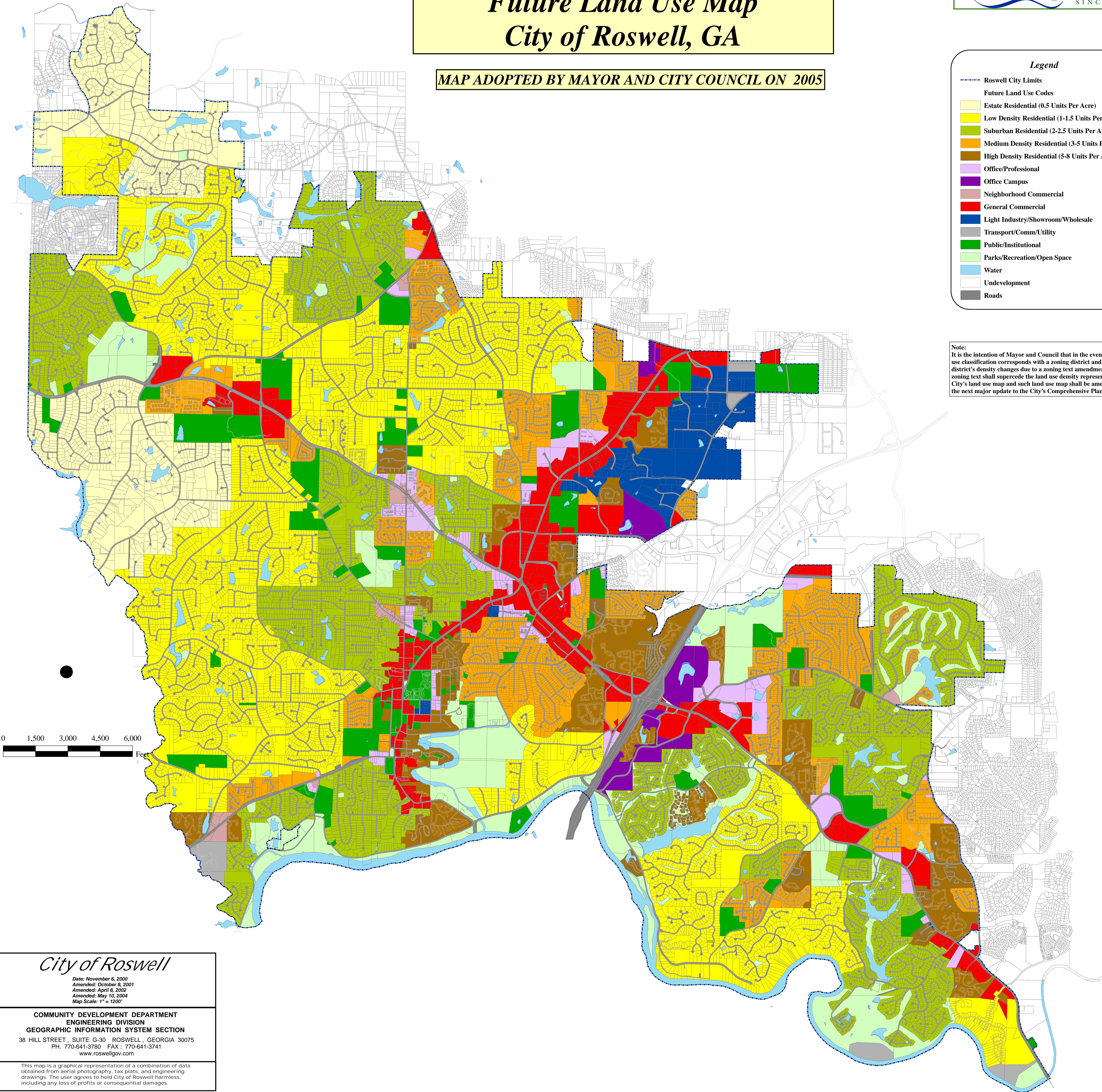
MAP ADOPTED BY MAYOR AND CITY COUNCIL ON 2005



Legend

- Roswell City Limits
- Future Land Use Codes**
- Estate Residential (0.5 Units Per Acre)
- Low Density Residential (1-1.5 Units Per Acre)
- Suburban Residential (2-2.5 Units Per Acre)
- Medium Density Residential (3-5 Units Per Acre)
- High Density Residential (5-8 Units Per Acre)
- Office/Professional
- Office Campus
- Neighborhood Commercial
- General Commercial
- Light Industry/Showroom/Wholesale
- Transport/Comm/Utility
- Public/Institutional
- Parks/Recreation/Open Space
- Water
- Undevelopment
- Roads

Note:
It is the intention of Mayor and Council that in the event that a land use classification corresponds with a zoning district and that zoning district's density changes due to a zoning text amendment, the zoning text shall supercede the land use density represented on the City's land use map and such land use map shall be amended with the next major update to the City's Comprehensive Plan.



City of Roswell

Date: November 6, 2000
Amended: October 8, 2001
Amended: April 8, 2002
Amended: May 10, 2004
Map Scale: 1" = 1200'

COMMUNITY DEVELOPMENT DEPARTMENT
ENGINEERING DIVISION
GEOGRAPHIC INFORMATION SYSTEM SECTION

38 HILL STREET, SUITE G-30 ROSWELL, GEORGIA 30075
PH. 770-641-3780 FAX: 770-641-3741
www.roswellgov.com

This map is a graphical representation of a combination of data obtained from aerial photography, tax plats, and engineering drawings. The user agrees to hold City of Roswell harmless, including any loss of profits or consequential damages.