

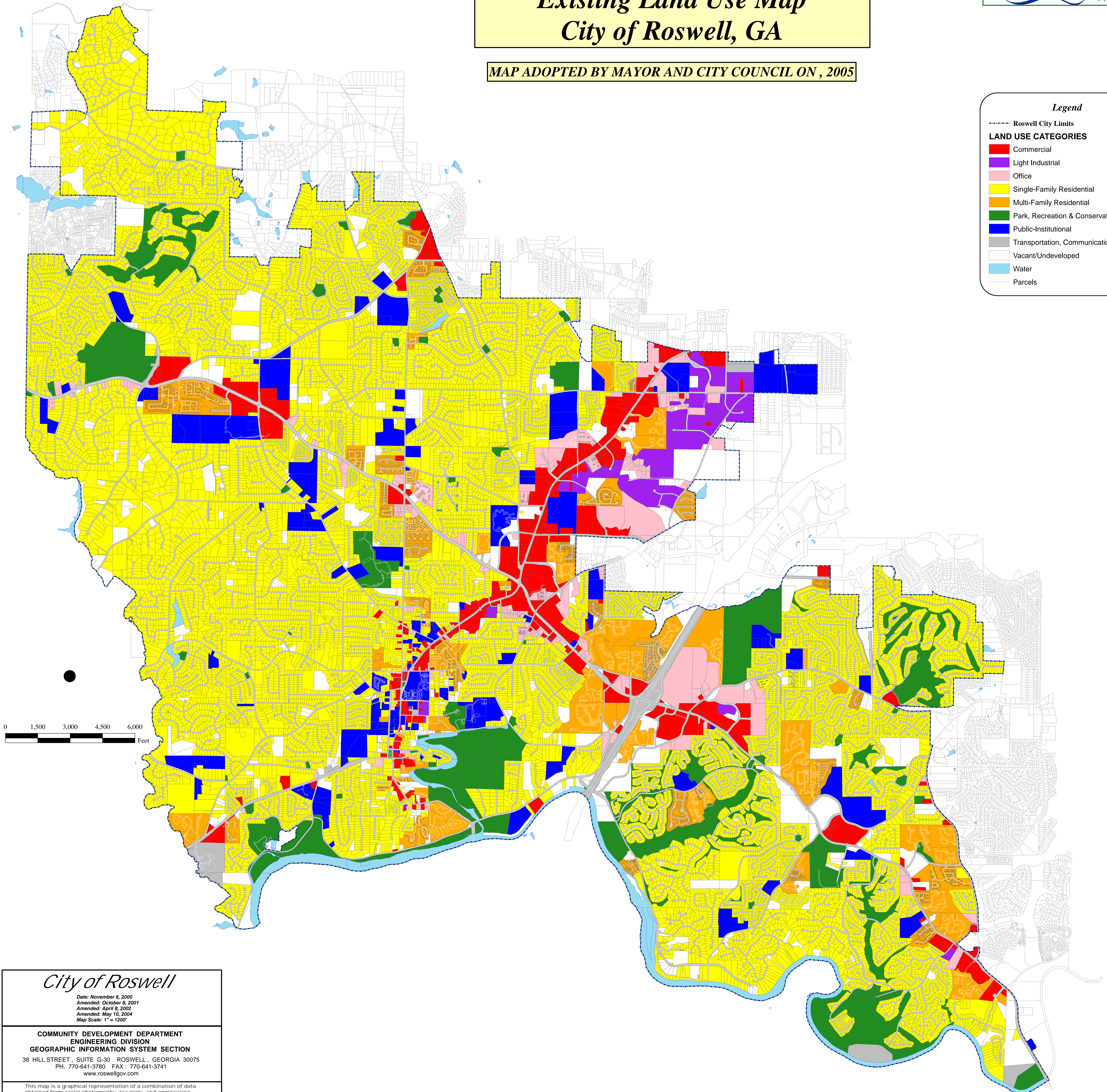
Official Comprehensive 2025 Plan Existing Land Use Map City of Roswell, GA

MAP ADOPTED BY MAYOR AND CITY COUNCIL ON , 2005



Legend

- Roswell City Limits
- LAND USE CATEGORIES**
- Commercial
- Light Industrial
- Office
- Single-Family Residential
- Multi-Family Residential
- Park, Recreation & Conservation
- Public-Institutional
- Transportation, Communication & Utilities
- Vacant/Undeveloped
- Water
- Parcels



City of Roswell

Date: November 6, 2000
Amended: October 8, 2001
Amended: April 8, 2002
Amended: May 10, 2004
Map Scale: 1" = 1200'

COMMUNITY DEVELOPMENT DEPARTMENT
ENGINEERING DIVISION
GEOGRAPHIC INFORMATION SYSTEM SECTION

38 HILL STREET, SUITE G-30 ROSWELL, GEORGIA 30075
PH. 770-641-3780 FAX: 770-641-3741
www.roswellgov.com

This map is a graphical representation of a combination of data obtained from aerial photography, tax plats, and engineering drawings. The user agrees to hold City of Roswell harmless, including any loss of profits or consequential damages.